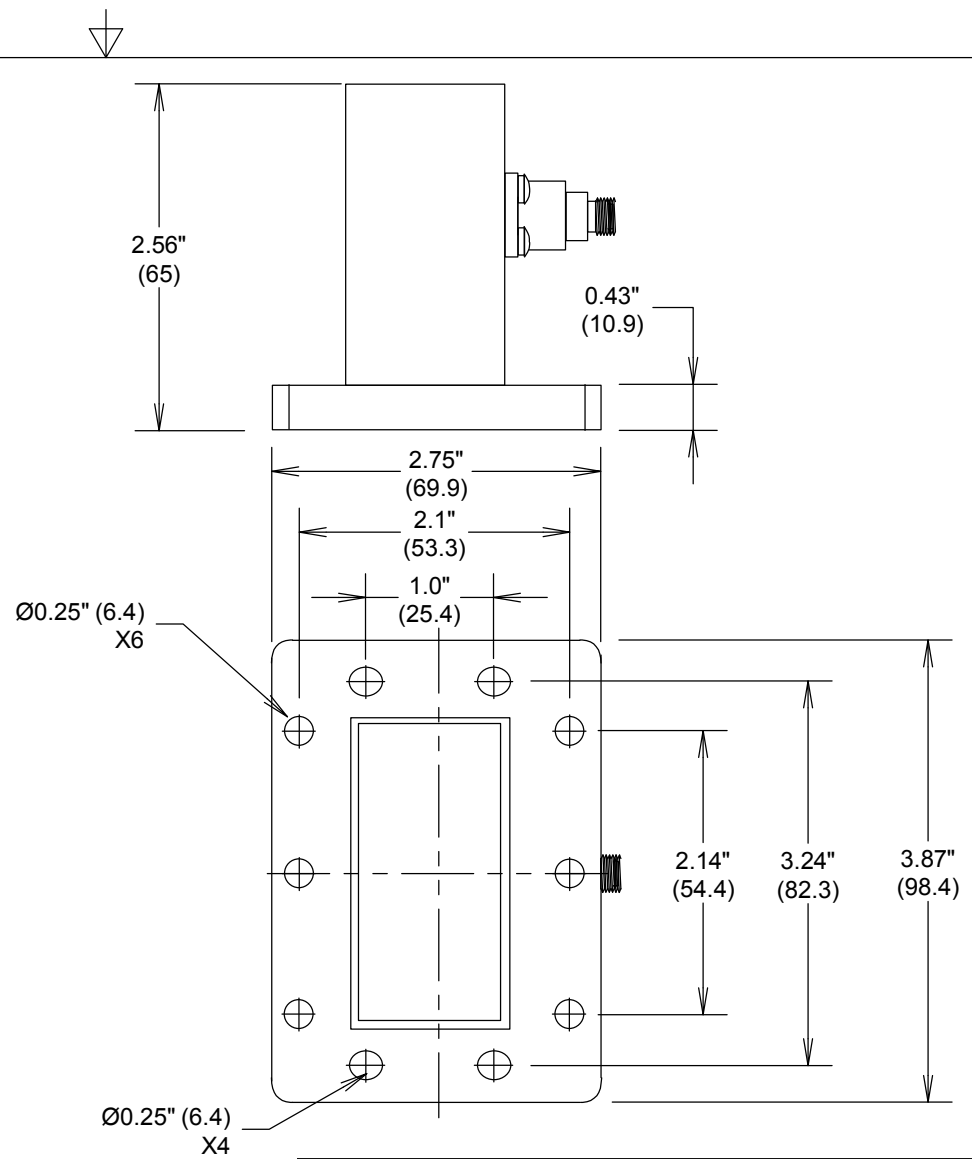


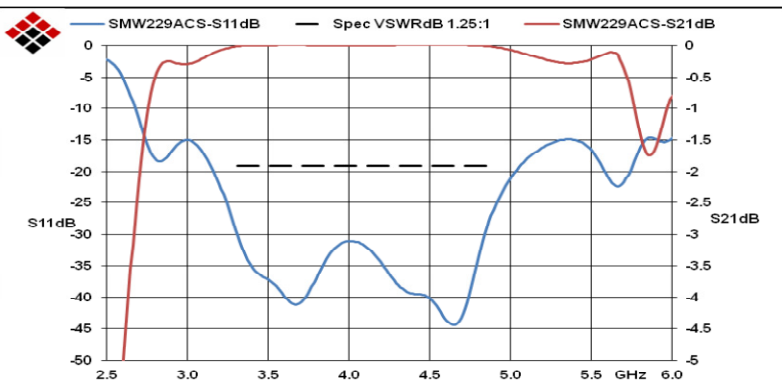
SMW229ACS

WR229 to SMA-F WAVEGUIDE TO COAXIAL ADAPTER

FREQUENCY: 3.3-4.9 GHZ
 VSWR: 1.25:1
 MATERIAL BODY: AI
 MATERIAL CONNECTORS:
 BODY: PASSIVATED STAINLESS STEEL
 CONTACTS: BeCu Au PLATED PASSIVATED 30μ-in



MEASUREMENTS BELOW ARE TYPICAL



ALL DIMENSIONS IN inches(MM) Typical

FAIRVIEW MICROWAVE INC.

ALLEN, TX 75013 WWW.FAIRVIEWMICROWAVE.COM

TITLE

WR229 to SMA-F WAVEGUIDE TO COAXIAL ADAPTER

SIZE

A

CAGE CODE

3FKR5

DWG NO

SMW229ACS

REV

A

SCALE

SHEET