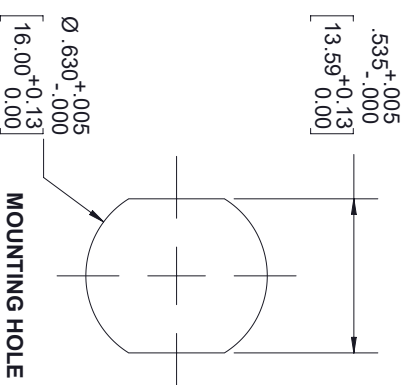
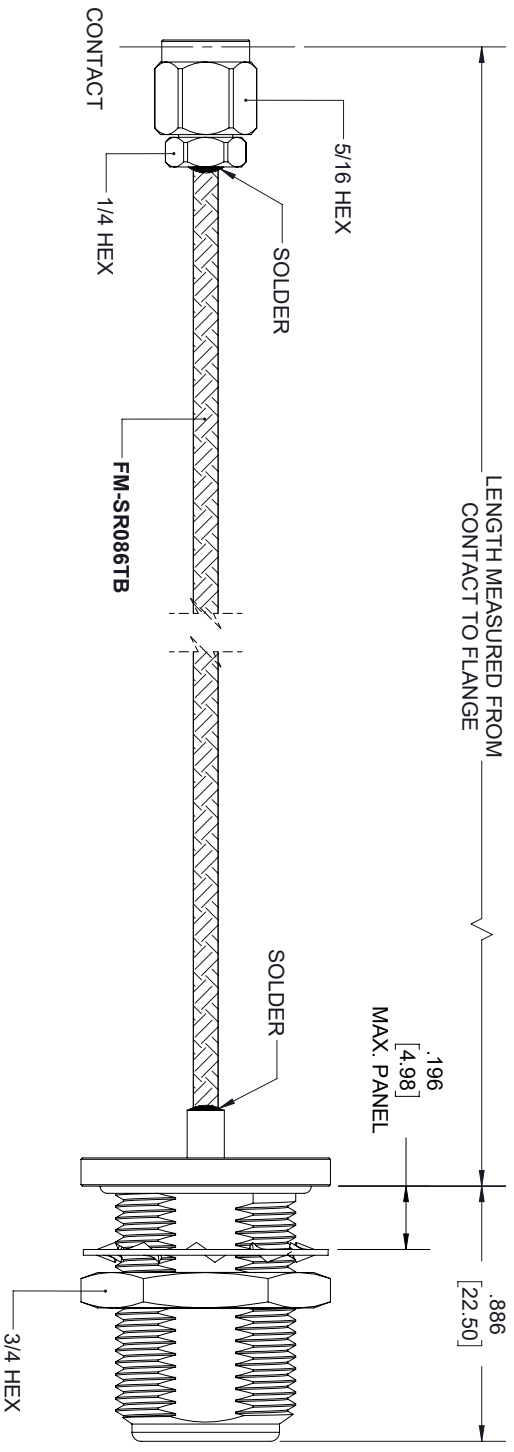


| REVISIONS | | | |
|-----------|-----------------|----------|----------|
| REV. | DESCRIPTION | DATE | APPROVED |
| A | INITIAL RELEASE | 11/28/19 | S ELLIS |



SMA MALE

N FEMALE
BULKHEAD

THESE COMMODITIES, TECHNOLOGY OR SOFTWARE WERE EXPORTED FROM THE UNITED STATES IN ACCORDANCE WITH THE EXPORT ADMINISTRATION REGULATIONS, DIVERSION CONTRARY TO U.S. LAW PROHIBITED.



TITLE

| | | | | | |
|---|-----------|------------------------------|----------------|---|--|
| UNLESS OTHERWISE SPECIFIED LEADING DIMENSIONS ARE INCHES DIMENSIONS IN [] ARE MILLIMETERS | | | | THIRD-ANGLE PROJECTION | |
| TOLERANCES: | | | | | |
| FRACTIONS | | CABLE LENGTH (L) TOLERANCES: | | THE INFORMATION AND DESIGN IN THIS DOCUMENT IS THE PROPERTY OF FAIRVIEW MICROWAVE CORPORATION. ALL RIGHTS RESERVED. | |
| X = ±.2 | [.008] | L ≤ 12 [806] | ±.125 / -0 | SHEET 1 OF 1 | |
| XX = ±.02 | [.51] | 12 [305] < L ≤ 60 [1524] | ±.25 / -0 | SCALE N/A | |
| XXX = ±.005 | [.13] | 60 [1524] < L ≤ 120 [3048] | ±.4 [102] / -0 | REV A | |
| ANGLES ± 1° | | 120 [3048] < L ≤ 300 [7620] | ±.6 [152] / -0 | REV A | |
| | | 300 [7620] < L | ±.5% L / -0 | REV A | |
| ALL DIMENSIONS SHOWN ARE FOR REFERENCE ONLY. | | | | | |
| SIZE | GAGE CODE | DRAWN BY | PART NUMBER | REV | |
| A | 3FKRS | K.DANG | FMCA2129 | | |