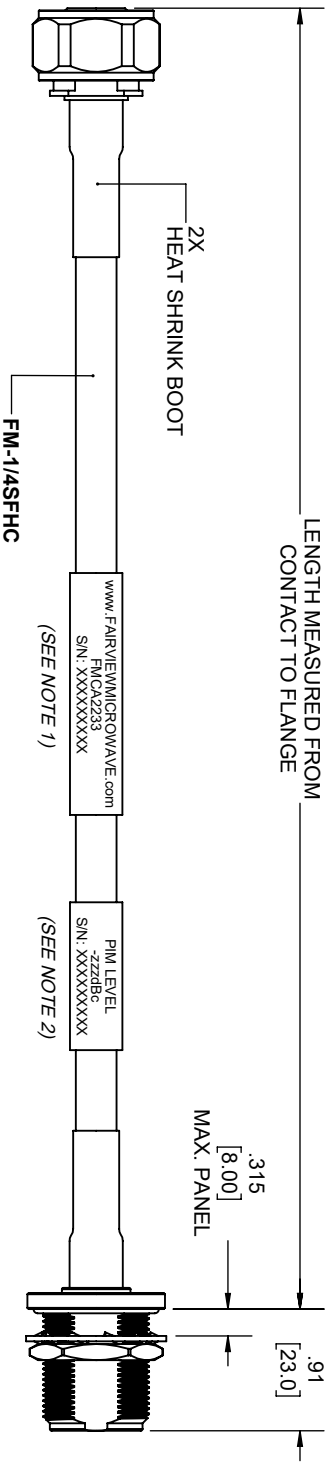
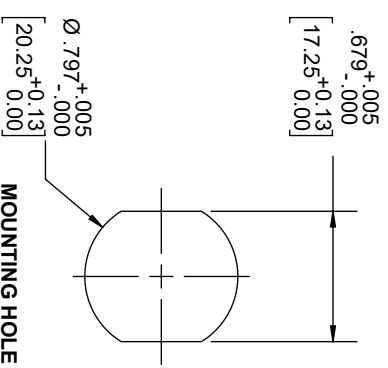


REVISIONS			
REV.	DESCRIPTION	DATE	APPROVED
A	INITIAL RELEASE	1/19/2021	S. ELLIS



4.1/9.5 Mini DIN
MALE

4.1/9.5 Mini DIN FEMALE
BULKHEAD



NOTES:

1. CABLES 84" AND UNDER HAVE 1 LABEL CENTERED. CABLES OVER 84" HAVE 2 LABELS, ONE AT EACH END 12.0" FROM THE END OF THE CONNECTOR.
2. 6" FROM CABLE END 1 PLACE FOR ALL LENGTHS OF CABLE.

THESE COMMODITIES, TECHNOLOGY OR SOFTWARE WERE EXPORTED FROM THE UNITED STATES IN ACCORDANCE WITH THE EXPORT ADMINISTRATION REGULATIONS, DIVERSION CONTRARY TO U.S. LAW PROHIBITED.



UNLESS OTHERWISE SPECIFIED LEADING DIMENSIONS ARE INCHES		THIRD-ANGLE PROJECTION	
DIMENSIONS IN [] ARE MILLIMETERS			
TOLERANCES:		THE INFORMATION AND DESIGN IN THIS DOCUMENT IS THE PROPERTY OF FAIRVIEW MICROWAVE CORPORATION. ALL RIGHTS RESERVED.	
CABLE LENGTH (L) TOLERANCES:		SHEET 1 OF 1	
L ≤ 12 (305) = +1 (25) / -0 12 (305) < L ≤ 60 (1524) = +2 (51) / -0 60 (1524) < L ≤ 120 (3048) = +4 (102) / -0 120 (3048) < L ≤ 300 (7620) = +6 (152) / -0 300 (7620) < L = +5%L / -0		SCALE N/A	
ALL DIMENSIONS SHOWN ARE FOR REFERENCE ONLY.		REV A	
SIZE A	DRAWN BY K.DANG	ITEM NO. FMCA2233	REV A
GAGE CODE 3FKRS			

FRACTIONS ± 1/32
ANGLES ± 1°

X = ±.2 [5.08]
XX = ±.02 [.51]
XXX = ±.005 [.13]

X = ±.2 [5.08]
XX = ±.02 [.51]
XXX = ±.005 [.13]

SCALE N/A

REV A