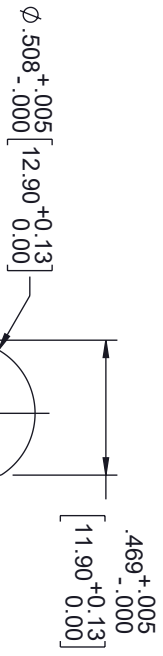
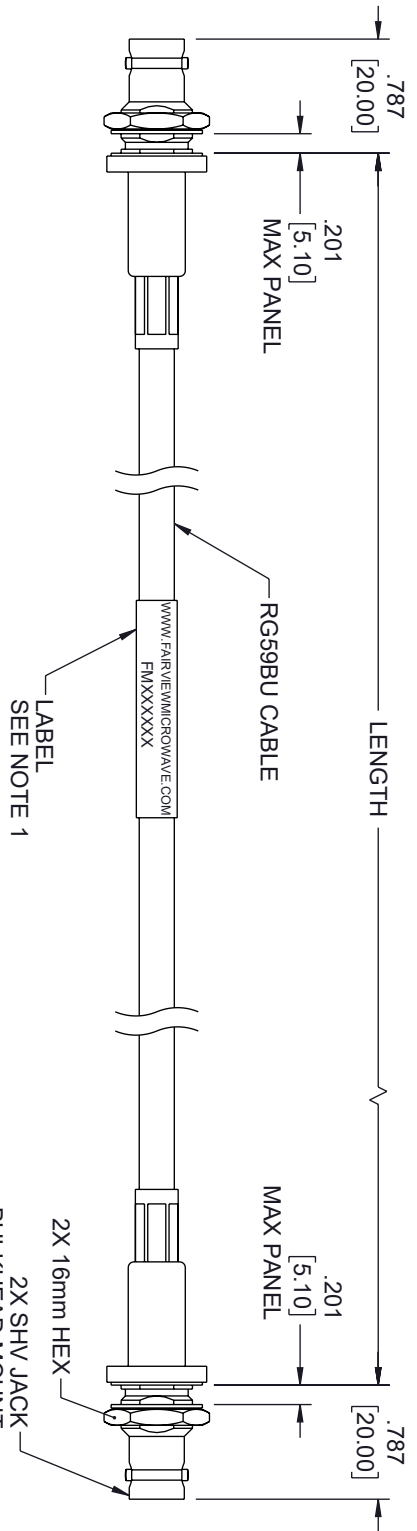


REVISION					
ZONE	REV.	DESCRIPTION	DATE	CHANGED BY	APPROVED BY
A		INITIAL RELEASE	01/31/2023	HBAKKE	AGANWANI



- NOTES:
- CABLE ASSEMBLY LENGTH LABEL PLACEMENT: 36 INCHES OR LESS, ONE LABEL APPROXIMATELY CENTERED. LONGER THAN 36 INCHES, TWO LABELS APPROXIMATELY 6 INCHES FROM EACH CONNECTOR. CABLE ASSEMBLIES SHALL BE TESTED FOR CONTINUITY.
 -

THE INFORMATION CONTAINED IN THIS DRAWING IS THE SOLE PROPERTY OF INFINITE ELECTRONICS, INC. ANY REPRODUCTION IN PART OR WHOLE WITHOUT THE WRITTEN PERMISSION OF INFINITE ELECTRONICS, INC. IS PROHIBITED. THESE COMMODITIES, TECHNOLOGY OR SOFTWARE WERE EXPORTED FROM THE UNITED STATES IN ACCORDANCE WITH THE EXPORT ADMINISTRATION REGULATIONS. DIVERSION CONTRARY TO U.S. LAW PROHIBITED.

<p>UNLESS OTHERWISE SPECIFIED, LEADING DIMENSIONS ARE INCHES DIMENSIONS IN [] ARE MILLIMETERS</p> <p>TOLERANCES:</p> <table border="0"> <tr> <td>X = ± .2</td> <td>[.5]</td> <td>FRACTIONS</td> <td>± 1/32</td> </tr> <tr> <td>XX = ± .02</td> <td>[.5]</td> <td>ANGLES</td> <td>± 1°</td> </tr> <tr> <td>XXX = ± .005</td> <td>[.13]</td> <td></td> <td></td> </tr> </table> <p>CABLE LENGTH TOLERANCES:</p> <table border="0"> <tr> <td>≤ 12 [305]</td> <td>± 1 [25] / -0</td> </tr> <tr> <td>> 12 [305] ≤ 60 [1524]</td> <td>± 2 [51] / -0</td> </tr> <tr> <td>> 60 [1524] ≤ 120 [3048]</td> <td>± 4 [102] / -0</td> </tr> <tr> <td>> 120 [3048] ≤ 300 [7620]</td> <td>± 6 [152] / -0</td> </tr> <tr> <td>> 300 [7620]</td> <td>± 5% / -0</td> </tr> </table>		X = ± .2	[.5]	FRACTIONS	± 1/32	XX = ± .02	[.5]	ANGLES	± 1°	XXX = ± .005	[.13]			≤ 12 [305]	± 1 [25] / -0	> 12 [305] ≤ 60 [1524]	± 2 [51] / -0	> 60 [1524] ≤ 120 [3048]	± 4 [102] / -0	> 120 [3048] ≤ 300 [7620]	± 6 [152] / -0	> 300 [7620]	± 5% / -0	<p>DESCRIPTION</p> <p>SHV JACK BULKHEAD TO SHV JACK BULKHEAD CABLE USING RG59 COAX</p>	
X = ± .2	[.5]	FRACTIONS	± 1/32																						
XX = ± .02	[.5]	ANGLES	± 1°																						
XXX = ± .005	[.13]																								
≤ 12 [305]	± 1 [25] / -0																								
> 12 [305] ≤ 60 [1524]	± 2 [51] / -0																								
> 60 [1524] ≤ 120 [3048]	± 4 [102] / -0																								
> 120 [3048] ≤ 300 [7620]	± 6 [152] / -0																								
> 300 [7620]	± 5% / -0																								
<p>SIZE</p> <p>A</p>		<p>ITEM NO.</p> <p>FMCA3154</p>																							
<p>CAGE CODE</p> <p>3FKR5</p>		<p>DRAWN BY</p> <p>HBAKKE</p>																							
<p>Web site: www.FairviewMicrowave.com</p> <p>Phone: 1.800.715.4396 1.972.649.6678</p>		<p>INTERPRET ALL DIMENSIONS AND TOLERANCES PER ASME Y14.5</p> <p>SCALE</p> <p>NONE</p> <p>SHEET</p> <p>1 OF 1</p>																							
<p>an INFINITT® brand</p>		<p>FAIRVIEW Microwave®</p>																							