

6

5

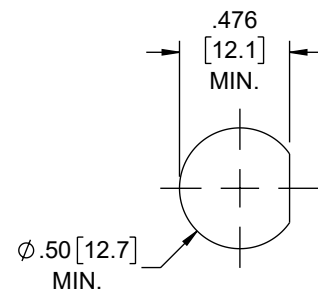
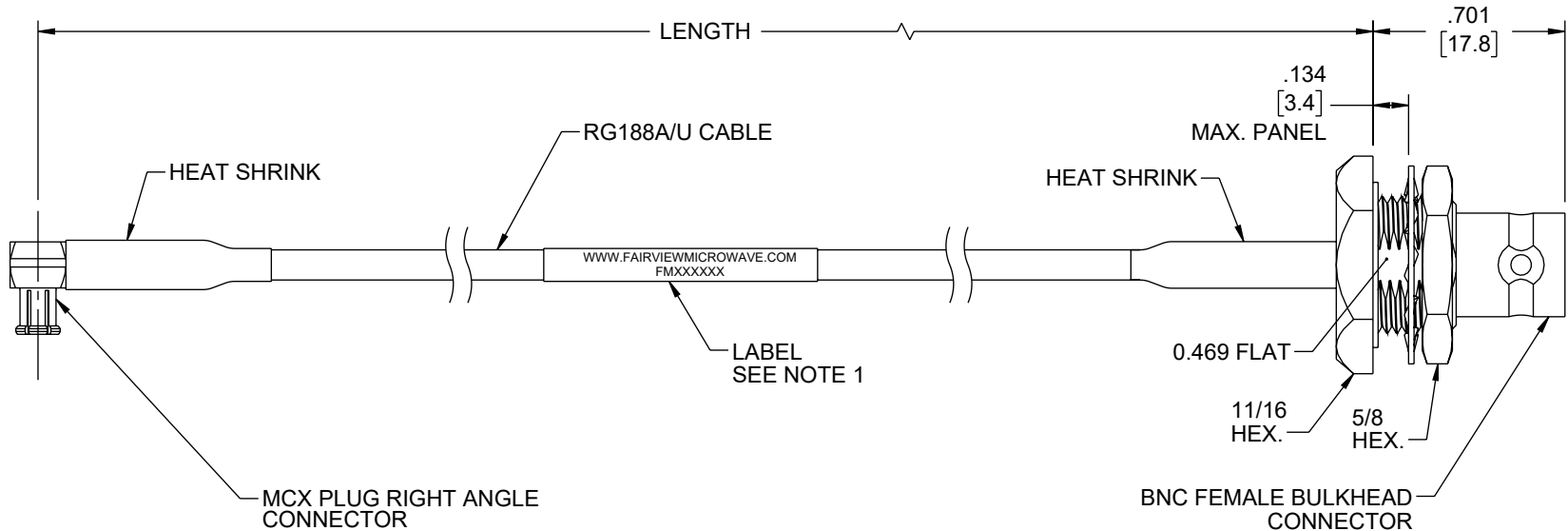
4

3

2

1

REVISION					
ZONE	REV.	DESCRIPTION	DATE	CHANGED BY	APPROVED BY
	A	INITIAL RELEASE	04/26/2023	PSRINIVAS	AGANWANI



NOTES:

- CABLE ASSEMBLY LENGTH LABEL PLACEMENT: 36 INCHES OR LESS, ONE LABEL APPROXIMATELY CENTERED. LONGER THAN 36 INCHES, TWO LABELS APPROXIMATELY 6 INCHES FROM EACH CONNECTOR.
- CABLE ASSEMBLIES SHALL BE TESTED FOR CONTINUITY.

<p>UNLESS OTHERWISE SPECIFIED LEADING DIMENSIONS ARE INCHES DIMENSIONS IN [] ARE MILLIMETERS</p> <p>TOLERANCES:</p> <table border="0"> <tr> <td>.X = ±.2 [5]</td> <td>FRACTIONS ± 1/32</td> </tr> <tr> <td>.XX = ±.02 [.5]</td> <td>ANGLES ± 1°</td> </tr> <tr> <td>.XXX = ±.005 [.13]</td> <td></td> </tr> </table> <p>CABLE LENGTH TOLERANCES:</p> <table border="0"> <tr> <td>≤12 [305] = +1 [25] / -0</td> </tr> <tr> <td>>12 [305] ≤ 60 [1524] = +2 [51] / -0</td> </tr> <tr> <td>>60 [1524] ≤ 120 [3048] = +4 [102] / -0</td> </tr> <tr> <td>>120 [3048] ≤ 300 [7620] = +6 [152] / -0</td> </tr> <tr> <td>>300 [7620] = +5% / -0</td> </tr> </table> <p>ALL DIMENSIONS ARE FOR REFERENCE ONLY AND SUBJECT TO CHANGE WITHOUT NOTICE.</p>	.X = ±.2 [5]	FRACTIONS ± 1/32	.XX = ±.02 [.5]	ANGLES ± 1°	.XXX = ±.005 [.13]		≤12 [305] = +1 [25] / -0	>12 [305] ≤ 60 [1524] = +2 [51] / -0	>60 [1524] ≤ 120 [3048] = +4 [102] / -0	>120 [3048] ≤ 300 [7620] = +6 [152] / -0	>300 [7620] = +5% / -0	<p>Fairview Microwave an INFINIT® brand</p> <p>Website: www.FairviewMicrowave.com Phone: 1.800.715.4396 1.972.649.6678</p>	<p>INTERPRET ALL DIMENSIONS AND TOLERANCES PER ASME Y14.5</p> <table border="1"> <tr> <td>SCALE</td> <td>SHEET</td> </tr> <tr> <td>NONE</td> <td>1 OF 1</td> </tr> </table>	SCALE	SHEET	NONE	1 OF 1
	.X = ±.2 [5]	FRACTIONS ± 1/32															
.XX = ±.02 [.5]	ANGLES ± 1°																
.XXX = ±.005 [.13]																	
≤12 [305] = +1 [25] / -0																	
>12 [305] ≤ 60 [1524] = +2 [51] / -0																	
>60 [1524] ≤ 120 [3048] = +4 [102] / -0																	
>120 [3048] ≤ 300 [7620] = +6 [152] / -0																	
>300 [7620] = +5% / -0																	
SCALE	SHEET																
NONE	1 OF 1																
<p>DESCRIPTION</p> <p>MCX Plug Right Angle to BNC Female Bulkhead Cable Using RG-188 Coax with HeatShrink</p>		<table border="1"> <tr> <td>SIZE</td> <td>CAGE CODE</td> <td>DRAWN BY</td> <td>ITEM NO.</td> <td>REV</td> </tr> <tr> <td>A</td> <td>3FKR5</td> <td>PSRINIVAS</td> <td>FMCA3267</td> <td>A</td> </tr> </table>	SIZE	CAGE CODE	DRAWN BY	ITEM NO.	REV	A	3FKR5	PSRINIVAS	FMCA3267	A					
SIZE	CAGE CODE	DRAWN BY	ITEM NO.	REV													
A	3FKR5	PSRINIVAS	FMCA3267	A													

THE INFORMATION CONTAINED IN THIS DRAWING IS THE SOLE PROPERTY OF INFINITE ELECTRONICS, INC. ANY REPRODUCTION IN PART OR WHOLE WITHOUT THE WRITTEN PERMISSION OF INFINITE ELECTRONICS, INC. IS PROHIBITED. THESE COMMODITIES, TECHNOLOGY OR SOFTWARE WERE EXPORTED FROM THE UNITED STATES IN ACCORDANCE WITH THE EXPORT ADMINISTRATION REGULATIONS. DIVERSION CONTRARY TO U.S. LAW PROHIBITED.

6

5

4

3

2

1