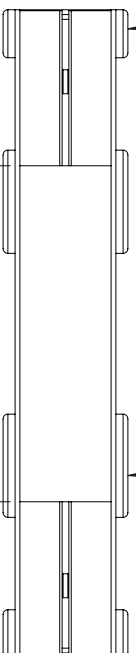
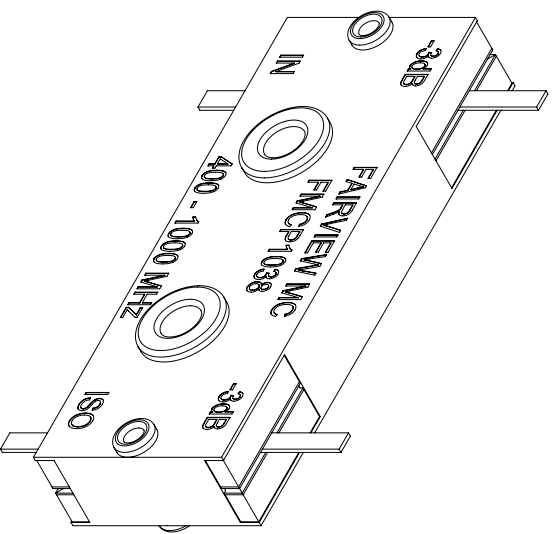
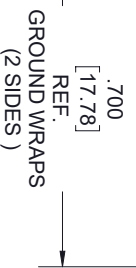


.03 [.76] MAX. EYELET PROJ.  
 $\phi$  .13 [3.30] MAX. EYELET.  
 (TYP. EACH SIDE)



.03 [.76] MAX. EYELET PROJ.  
 $\phi$  .22 [5.59] MAX. EYELET.  
 (TYP. EACH SIDE)



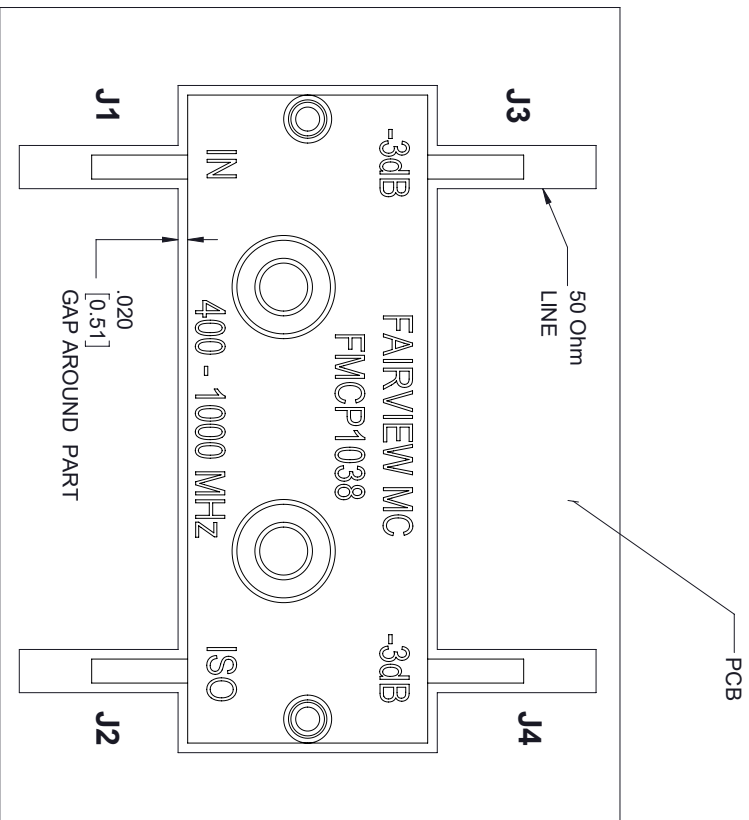
STANDARD TOLERANCES  
 .X ±0.2  
 .XX ±0.01  
 .XXX ±0.005

\*STANDARD TOLERANCES APPLY  
 ONLY TO DIMENSIONS IN INCHES

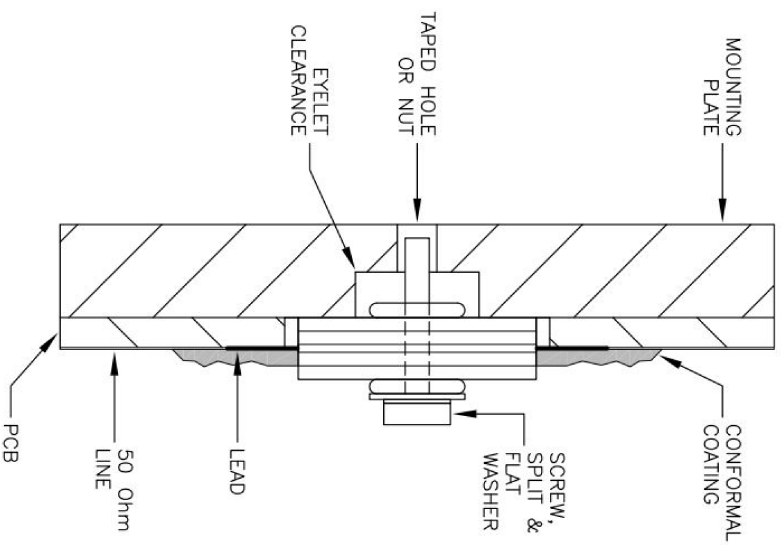


NOTES:  
 1. UNLESS OTHERWISE SPECIFIED ALL DIMENSIONS ARE NOMINAL.  
 2. ALL SPECIFICATIONS ARE SUBJECT TO CHANGE WITHOUT NOTICE AT ANY TIME.  
 3. DIMENSIONS ARE IN INCHES [mm].

TITLE		DWG NO		CAGE CODE	
		FMCP1038		3FKR5	
CAD FILE	10/15/18	SHEET	1 OF 2	SCALE	N/A
		SIZE	A		7361



**MOUNTING TOP VIEW**



**MOUNTING SIDE VIEW**

PORT CONFIGURATION				
INPUT	J1	J2	J3	J4
J1	-	ISOLATION	-3dB < 0°	-3dB < 90°
J2	ISOLATION	-	-3dB < 90°	-3dB < 0°
J3	-3dB < 0°	-3dB < 90°	-	ISOLATION
J4	-3dB < 90°	-3dB < 0°	ISOLATION	-

STANDARD TOLERANCES  
 .X ±0.2  
 .XX ±0.01  
 .XXX ±0.005

\*STANDARD TOLERANCES APPLY ONLY TO DIMENSIONS IN INCHES

**NOTES:**

1. CONFORMAL COATING IS RECOMMENDED AT THE LEAD / 50 Ohm LINE INTERFACE FOR HIGH POWER APPLICATIONS TO PREVENT VOLTAGE ARCING.
2. TO INSURE PROPER GROUNDING THE BOTTOM PLATE OF COUPLER MUST LAY FLAT ON MOUNTING SURFACE. PLEASE ALLOW CLEARANCE FOR ALL EYELET PROJECTIONS IN BASE PLATE.
3. SOLDER LEADS TO 50 Ohm LINES USING LEAD FREE OR Sn63 ALLOY.
4. TORQUE STAINLESS STEEL SCREW, SPLIT AND FLAT WASHER TO 2.5 IN-LBS.



NOTES:  
 1. UNLESS OTHERWISE SPECIFIED ALL DIMENSIONS ARE NOMINAL.  
 2. ALL SPECIFICATIONS ARE SUBJECT TO CHANGE WITHOUT NOTICE AT ANY TIME.  
 3. DIMENSIONS ARE IN INCHES [mm].

TITLE		DWG NO		CAGE CODE	
		FMCP1038		3FKR5	
CAD FILE	10/15/18	SHEET	2 OF 2	SCALE	N/A
				SIZE	A
					7361