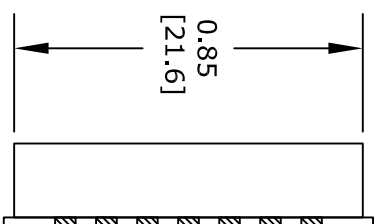
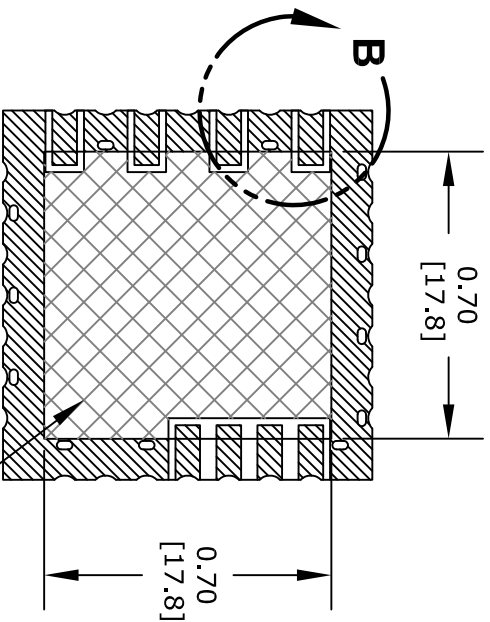
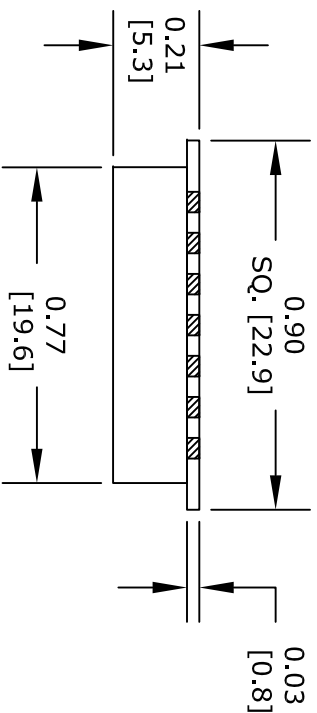


TOP VIEW



SIDE VIEW



BOTTOM VIEW

SEE NOTE 5

UNLESS OTHERWISE SPECIFIED:
DIMENSIONS ARE IN: inches [mm]
TOLERANCES ARE:
.XX = ± .03 [.762]
.XXX = ± .005 [.127]

* THESE DIMENSIONS AND TOLERANCES SUPERSEDE NOTE #1 ON TITLE BLOCK.

NOTES:

1. SINGLE HATCHED AREA REPRESENTS EXPOSED METALLIZATION.
2. DOUBLE HATCHED AREA REPRESENTS MASK OVER METALLIZATION.
3. RECOMMENDED PAD LAYOUT IAW IPC-7351.
4. TOP AND BOTTOM GROUND PADS MAY BE USED IN HIGH VIBRATION APPLICATIONS, MAY BE OMITTED FOR NORMAL OPERATION.
5. DOUBLE HATCHED AREA REPRESENTS MASKED (TENTED) VIAS AND TRACES, REMOVE ALL METALLIZATION FROM THIS AREA ON MATTING PART.

| Pin Configuration | | | | | | | |
|-------------------|-----|----|-----|----|--------|----|-----|
| 1 | NC | 8 | GND | 15 | Vcc | 22 | GND |
| 2 | GND | 9 | GND | 16 | GND | 23 | GND |
| 3 | GND | 10 | GND | 17 | RF OUT | 24 | GND |
| 4 | GND | 11 | GND | 18 | GND | 25 | GND |
| 5 | GND | 12 | GND | 19 | Vcc-1 | 26 | GND |
| 6 | GND | 13 | GND | 20 | GND | 27 | GND |
| 7 | GND | 14 | GND | 21 | LOCK | 28 | GND |

FAIRVIEW MICROWAVE INC.

ALLEN, TX 75013 WWW.FAIRVIEWMICROWAVE.COM

NOTES:
1. UNLESS OTHERWISE SPECIFIED ALL DIMENSIONS ARE NOMINAL.
2. ALL SPECIFICATIONS ARE SUBJECT TO CHANGE WITHOUT NOTICE AT ANY TIME.
3. DIMENSIONS ARE IN INCHES [mm].

| | | | | | |
|----------|--------|----------|--|-----------|------|
| TITLE | | DWG NO | | CAGE CODE | |
| | | FMXR1002 | | 3FKR5 | |
| CAD FILE | 120116 | SHEET | | SCALE | N/A |
| | | | | SIZE | A |
| | | | | | 2233 |