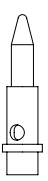
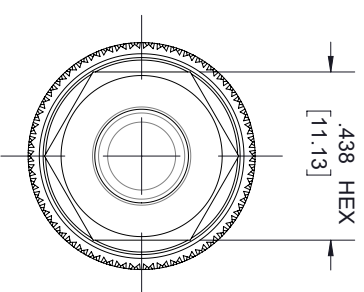
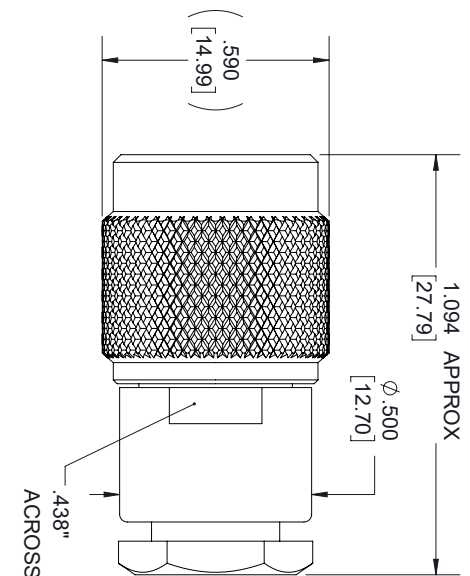


REVISIONS			
REV.	DESCRIPTION	DATE	APPROVED
B	PCR SC4269 20220909	10/10/2022	SRAUTUS



ASSEMBLY PROCEDURES

- 1) Trim cable jacket to dimension A. Slide backnut, washer, V-gasket, and braid clamp onto cable as shown. Cable jacket should bottom on step in braid clamp.
- 2) Comb braid wires out straight and fold back over front shoulder of braid clamp (braid wires should not overlap one another after folding). Trim braid wires flush with step of braid clamp. Trim cable dielectric and center conductor to dimensions B and C.
- 3) If support insulator is provided for RG-62 or 71 cable, insert into hollow in dielectric. Assemble rear bushing or washer (if supplied), rear insulator (if captive contact) and contact, and solder contact to center conductor. Rear of contact should be flush with cable dielectric end. For right angle connector with access cap, omit this step entirely.
- 4) Insert prepared cable and hardware into body and tighten backnut. For right angle connectors with access cap, solder center conductor into slot in contact and tighten access cap.

TRIM CODES: A=.375(3/8) B=.109(7/64) C=.125(1/8)

- NOTES:
1. ASSEMBLED CONNECTOR INTERFACE IS DESIGNED IN ACCORDANCE WITH MIL-STD-348.

THESE COMMODITIES, TECHNOLOGY OR SOFTWARE WERE EXPORTED FROM THE UNITED STATES IN ACCORDANCE WITH THE EXPORT ADMINISTRATION REGULATIONS, DIVERSION CONTRARY TO U.S. LAW PROHIBITED.



TITLE

UNLESS OTHERWISE SPECIFIED LEADING DIMENSIONS ARE INCHES				THIRD-ANGLE PROJECTION	
DIMENSIONS IN [] ARE MILLIMETERS					
TOLERANCES:				THE INFORMATION AND DESIGN IN THIS DOCUMENT IS THE PROPERTY OF FAIRVIEW MICROWAVE CORPORATION. ALL RIGHTS RESERVED.	
CABLE LENGTH (L) TOLERANCES:		CABLE LENGTH (L) TOLERANCES:		SHEET 1 OF 1	
L ≤ 12 (305) = +1 (25) / -0		L ≤ 12 (305) = +1 (25) / -0		SCALE N/A	
12 (305) < L ≤ 60 (1524) = +2 (51) / -0		12 (305) < L ≤ 60 (1524) = +2 (51) / -0		REV B	
60 (1524) < L ≤ 120 (3048) = +4 (102) / -0		60 (1524) < L ≤ 120 (3048) = +4 (102) / -0		ITEM NO. SC4269	
120 (3048) < L ≤ 300 (7620) = +6 (152) / -0		120 (3048) < L ≤ 300 (7620) = +6 (152) / -0		DRAWN BY DMAY	
300 (7620) < L = +5%L / -0		300 (7620) < L = +5%L / -0		GAGE CODE 3FKRS	
X = ±.2 (5.08) FRACTIONS ± 1/32		X = ±.2 (5.08) FRACTIONS ± 1/32		SIZE A	
XX = ±.02 (.51) ANGLES ± 1°		XX = ±.02 (.51) ANGLES ± 1°		ALL DIMENSIONS SHOWN ARE FOR REFERENCE ONLY.	
XXX = ±.005 (.13)		XXX = ±.005 (.13)			