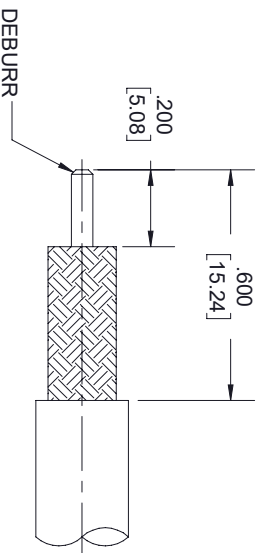
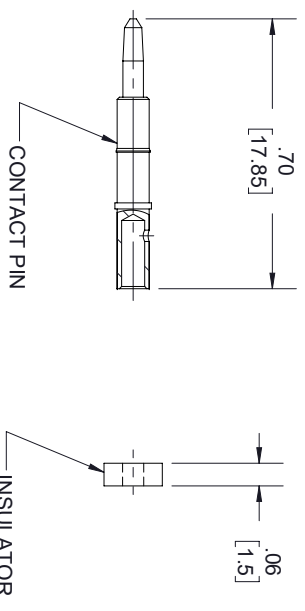
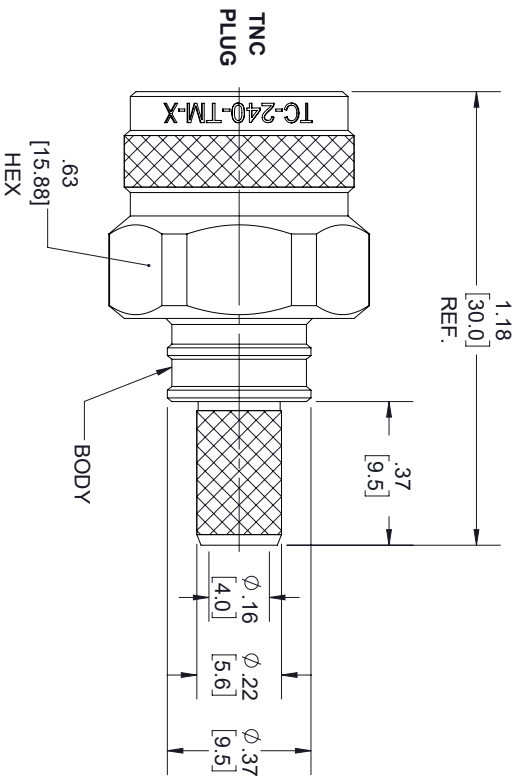
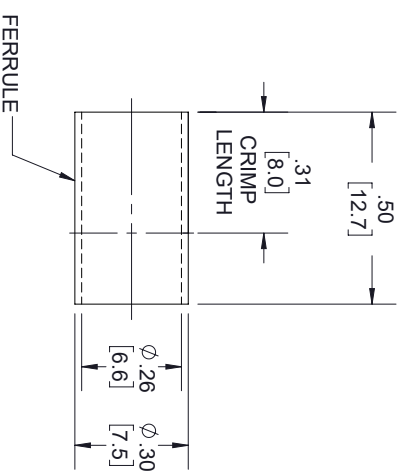


| REVISIONS |                          |          |          |
|-----------|--------------------------|----------|----------|
| REV.      | DESCRIPTION              | DATE     | APPROVED |
| A         | PCR TC-240-TM-X 20200622 | 06/30/20 | SRAUTUS  |

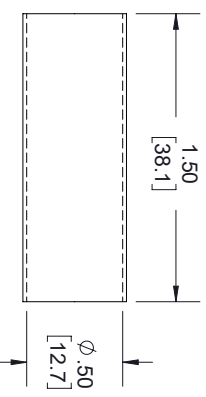


RECOMMENDED CABLE STRIPPING DIMENSIONS

CABLE ATTACHMENT:  
INNER: SOLDER  
OUTER: CRIMP.



SHRINK TUBE(1/2"x1.5" 3:1)



THESE COMMODITIES, TECHNOLOGY OR SOFTWARE WERE EXPORTED FROM THE UNITED STATES IN ACCORDANCE WITH THE EXPORT ADMINISTRATION REGULATIONS, DIVERSION CONTRARY TO U.S. LAW PROHIBITED.



TITLE

|   |           |   |     |   |  |
|---|-----------|---|-----|---|--|
| UNLESS OTHERWISE SPECIFIED LEADING DIMENSIONS ARE INCHES<br>DIMENSIONS IN [ ] ARE MILLIMETERS |           |   |     | THIRD-ANGLE PROJECTION  |  |
| TOLERANCES:   |           |   |     | THE INFORMATION AND DESIGN IN THIS DOCUMENT IS THE PROPERTY OF FAIRVIEW MICROWAVE CORPORATION. ALL RIGHTS RESERVED. |  |
| CABLE LENGTH (L) TOLERANCES:  |           | L ≤ 12 [305] = +1 [25] / -0                 |     | SHEET 1 OF 1  |  |
| FRACTIONS   |           | 12 [305] < L ≤ 60 [1524] = +2 [51] / -0     |     | SCALE N/A   |  |
| ± .132  |           | 60 [1524] < L ≤ 120 [3048] = +4 [102] / -0  |     | REV A   |  |
| ANGLES ± 1°   |           | 120 [3048] < L ≤ 300 [7620] = +6 [152] / -0 |     | ITEM NO. TC-240-TM-X  |  |
|   |           | 300 [7620] < L = +5% / -0                   |     | DRAWN BY SLI  |  |
| ALL DIMENSIONS SHOWN ARE FOR REFERENCE ONLY.  |           |   |     |   |  |
| SIZE  | CAGE CODE | ITEM NO.                                    | REV |   |  |
| A   | 3FKR5     | TC-240-TM-X                                 | A   |   |  |