

ADAPTER WR90 N/F GROOVE FLANGE

90AC206NG

SPECIFICATIONS

FREQUENCY: 8.2-12.4 GHZ

VSWR: 1.25:1

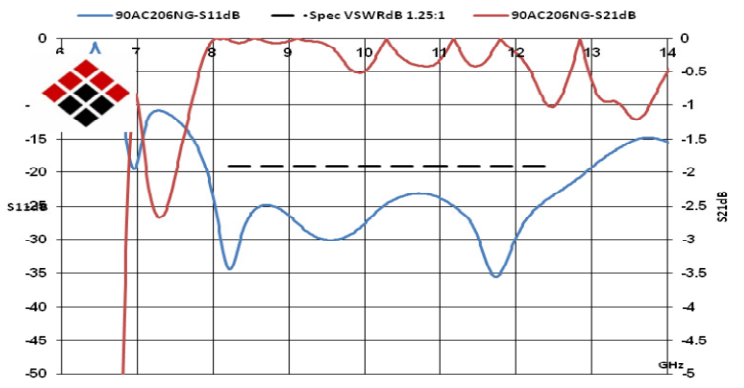
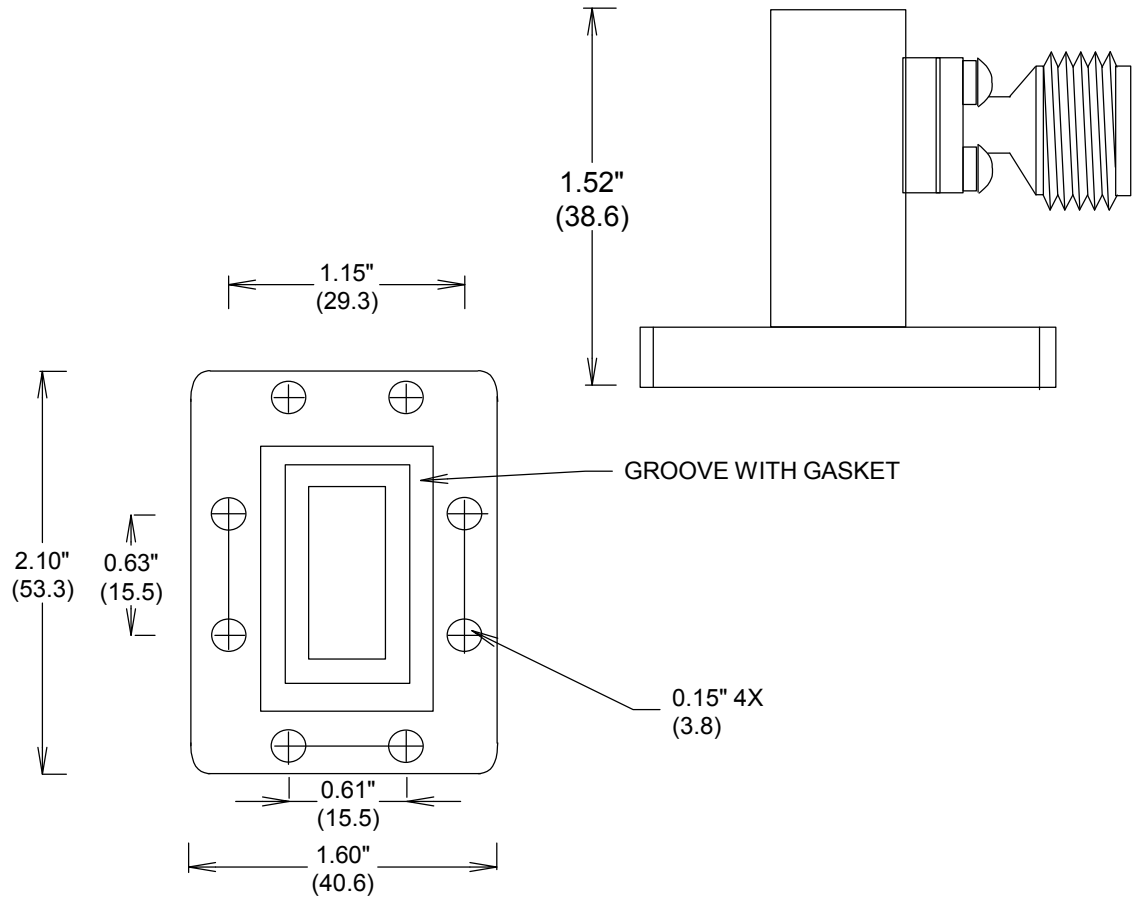
POWER CW: 150 WATTS

MATERIAL BODY: Al

MATERIAL CONNECTOR: PASSIVATED
STAINLESS STEEL

TEMPERATURE: -55°C to +120°C

ROHS COMPLIANT



ALL DIMENSIONS IN inches(MM) Typical

FAIRVIEW MICROWAVE INC.

ALLEN, TX 75013 WWW.FAIRVIEWMICROWAVE.COM

TITLE
**ADAPTER WR90 N/F
GROOVE FLANGE**

SIZE A	CAGE CODE 3FKR5	DWG NO 90AC206NG	REV --
------------------	---------------------------	----------------------------	-----------

SCALE SHEET