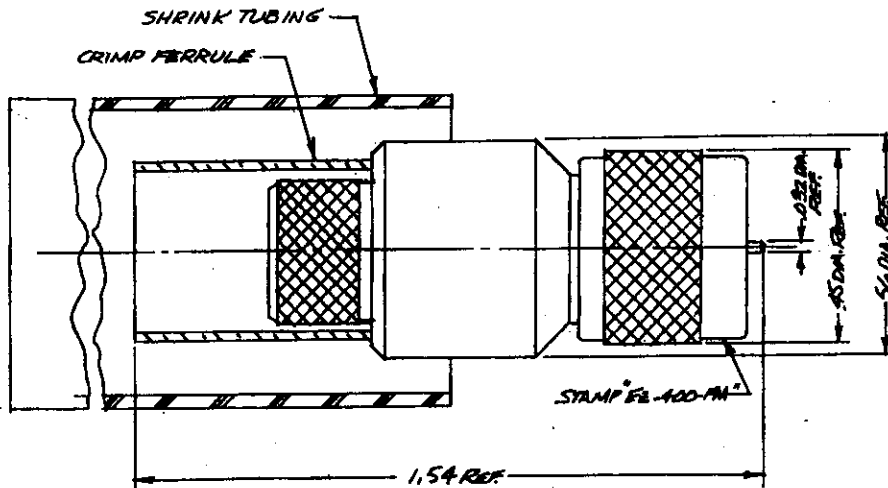


| REV. STATUS SHEETS | REV. LTR. | - | REVISIONS |             |         |     |
|--------------------|-----------|---|-----------|-------------|---------|-----|
|                    | SHEET NO  | 1 | LTR       | DESCRIPTION | DATE    | BY  |
|                    |           |   | -         | Released    | 2/28/00 | JCL |



**Materials & Finishes**

Center Contact: Gold Plated Beryllium Copper  
 Body & Hardware: Nickel Plated Brass  
 Dielectric: Teflon

**Electrical Properties**

Impedance: 75 Ohms  
 Working Voltage: 1000 Volts (RMS max)  
 VSWR: 1.35:1 (max) up to 2 GHz

|  |           |     |         |  |                     |                     |
|--|-----------|-----|---------|--|---------------------|---------------------|
| Unless otherwise specified dimensions in inches. Tolerances are applicable when specified. | Approvals |     |         | TIMES MICROWAVE SYSTEMS<br>Wallingford, CT 06492 |                     |                     |
|  | Drawn     | JCL | 2/28/00 | EZ-400-FM Type-F Male (plug)<br>for LMR-400      |                     |                     |
|  |           |     |         | Size A   | Code Ident<br>68999 | Dwg.No.<br>3190-952 |
|  |           |     |         | Scale: NA  |                     | Sheet: 1 of 1       |