

7/16 DIN Male Connector Clamp/Non-Solder Contact Attachment for LMR-900, LMR-900-LLPL Cable



EZ-900-716MC-2-SP



Times Microwave Systems Connector Specification

Configuration

- 7/16 DIN Male Connector
- 50 Ohms
- Straight Body Geometry
- Connector Interface Types: LMR-900, LMR-900-LLPL

Features

- Operating Frequency of 6 GHz Max.
- Good VSWR of 1.35:1
- Silver Plated Brass Contact
- 200 µin minimum contact plating

Applications

- General Purpose Test
- Custom Cable Assemblies

Description

7/16 DIN Male Standard Connector Clamp/Non-Solder Contact Attachment for LMR-900 and LMR-900-LLPL Cable, part number EZ-900-716MC-2-SP, from Times Microwave offered by Fairview Microwave is in-stock and ships same day. This 7/16 DIN male connector operates up to a maximum frequency of 6 GHz and offers good VSWR of 1.35:1.

Times Microwave's 7/16 DIN male connector EZ-900-716MC-2-SP datasheet specifications and outline drawing are shown in this PDF below. Our extensive offering of RF, microwave and millimeter wave connectors allows designers to configure and customize their signal connections however they like. From providing an I/O for a board design to creating a custom cable assembly configuration, Fairview Microwave has a connector solution to meet your needs. Fairview Microwave also has the expertise to build your custom cable assemblies for you and ship them same-day.

Electrical Specifications

Description	Minimum	Typical	Maximum	Units
Frequency Range	DC		6	GHz
VSWR			1.35:1	
Insertion Loss			0.245	dB
Test Voltage (DC)			2,500	Vdc
Insulation Resistance	10,000			MOhms
Impedance		50		Ohms

Electrical Specification Notes:
Insertion loss is equal to $0.1 \cdot \sqrt{F(\text{GHz})}$

Mechanical Specifications

Size

Length	2.28 in [57.91 mm]
Width	1.36 in [34.54 mm]
Height	1.36 in [34.54 mm]
Weight	1.18 lbs [535.24 g]
Mating Cycles	500 Cycles
Mating Torque	25 in-lbs [[2.83 Nm]]
Cable Retention Force	500 lbs [226.8 kg]

7/16 DIN Male Connector Clamp/Non-Solder Contact Attachment for LMR-900, LMR-900-LLPL Cable



EZ-900-716MC-2-SP

Material Specifications

Description	Material	Plating
Contact	Brass	Silver 200 µin minimum
Insulation	PTFE	
Body	Brass	Tri-Metal 100 µin minimum
Coupling Nut	Brass	Nickel 100 µin minimum
Gasket	Silicone	

Environmental Specifications

Temperature

Operating Range

-40 to +85 deg C

Shock

MIL-STD 202G, Meth.213, Cond I

Vibration

MIL-STD 202G, Meth.204, Cond.B

Thermal Shock

MIL-STD 202G, Meth.107, Cond.B

Compliance Certifications (see [product page](#) for current document)

Plotted and Other Data

Notes:

7/16 DIN Male Connector Clamp/Non-Solder Contact Attachment for LMR-900, LMR-900-LLPL Cable from Fairview Microwave is in-stock and available to ship same-day. All of our RF/microwave products are available off-the-shelf from our ISO 9001:2008 certified facilities in Lewisville, Texas. Fairview Microwave is RF on-demand.

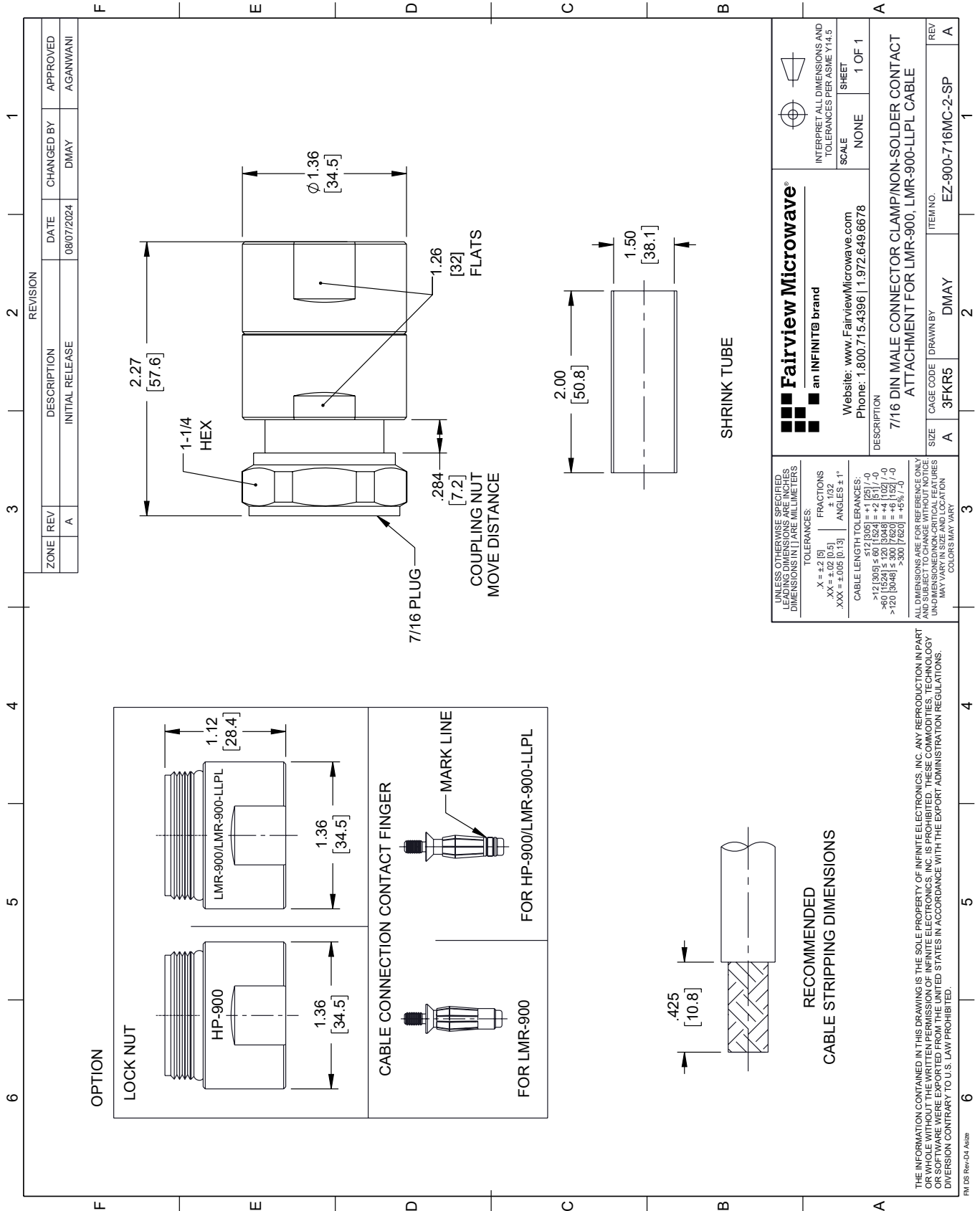
For additional information on this product, please click the following link: [7/16 DIN Male Connector Clamp/Non-Solder Contact Attachment for LMR-900, LMR-900-LLPL Cable EZ-900-716MC-2-SP](#)

URL: <https://www.fairviewmicrowave.com/product/rf-connectors/7-16-din-male-lmr-900-lmr-900-llpl-connector-ez-900-716mc-2-sp.html>

The information contained within this document is accurate to the best of our knowledge and representative of the part described herein. It may be necessary to make modifications to the part and/or the documentation of the part in order to implement improvements. Fairview Microwave reserves the right to make such changes as required. Unless otherwise stated, all specifications are nominal. Fairview Microwave does not make any representation or warranty regarding the suitability of the part described herein for any particular purpose, and Fairview Microwave does not assume liability arising out of the use of any part or document.

EZ-900-716MC-2-SP CAD Drawing

7/16 DIN Male Connector Clamp/Non-Solder Contact Attachment for LMR-900, LMR-900-LLPL Cable



ZONE	REV	DESCRIPTION	DATE	CHANGED BY	APPROVED
A		INITIAL RELEASE	08/07/2024	DMAY	AGANWANI

Fairview Microwave®
an INFINITE® brand

Website: www.FairviewMicrowave.com
Phone: 1.800.715.4396 | 1.972.649.6678

UNLESS OTHERWISE SPECIFIED, ALL DIMENSIONS ARE IN INCHES UNLESS INDICATED OTHERWISE. DIMENSIONS IN [] ARE MILLIMETERS.

TOLERANCES:
 .X = ±.2 [5]
 .XX = ±.02 [0.5]
 .XXX = ±.005 [0.13]
 FRACTIONS ± 1/32
 ANGLES ± 1°

CABLE LENGTH TOLERANCES:
 ≤ 12 [305] ± .60 [15.24] = ±.2 [5.1] / -0
 > 12 [305] ≤ 60 [1524] = ±.4 [10.2] / -0
 > 60 [1524] ≤ 120 [3048] = ±.4 [10.2] / -0
 > 120 [3048] ≤ 300 [7620] = ±.6 [15.2] / -0

ALL DIMENSIONS ARE FOR REFERENCE ONLY. UNLESS OTHERWISE SPECIFIED, DIMENSIONS MAY VARY IN SIZE AND LOCATION. COLORS MAY VARY.

INTERPRET ALL DIMENSIONS AND TOLERANCES PER ASME Y14.5

SCALE NONE SHEET 1 OF 1

DESCRIPTION: 7/16 DIN MALE CONNECTOR CLAMP/NON-SOLDER CONTACT ATTACHMENT FOR LMR-900, LMR-900-LLPL CABLE

ITEM NO. EZ-900-716MC-2-SP

SIZE A CAGE CODE 3FKR5 DRAWN BY DMAY

THE INFORMATION CONTAINED IN THIS DRAWING IS THE SOLE PROPERTY OF INFINITE ELECTRONICS, INC. ANY REPRODUCTION IN PART OR WHOLE WITHOUT THE WRITTEN PERMISSION OF INFINITE ELECTRONICS, INC. IS PROHIBITED. THESE COMMODITIES, TECHNOLOGY OR SOFTWARE WERE EXPORTED FROM THE UNITED STATES IN ACCORDANCE WITH THE EXPORT ADMINISTRATION REGULATIONS. DIVISION CONTRARY TO U.S. LAW PROHIBITED.

PM DS Rev-D4 Alt2b