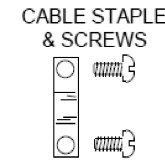
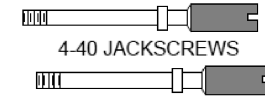
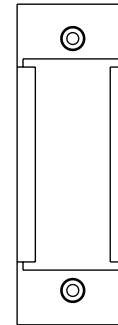
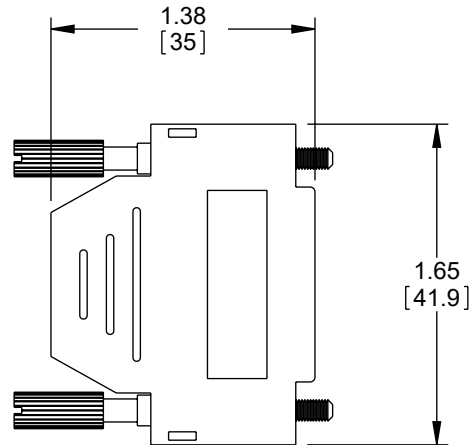
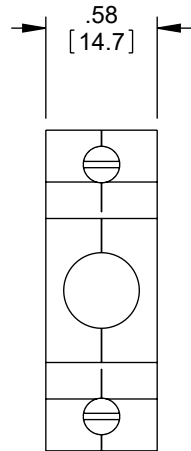
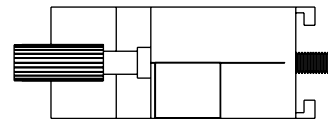


REVISION					
ZONE	REV.	DESCRIPTION	DATE	CHANGED BY	APPROVED BY
	A	INITIAL RELEASE	09/08/2023	BPUCHASKI	GUTTADAURO



KIT CONSISTS OF TWO MOLDED ABS PLASTIC HALF HOODS, TWO NICKEL PLATED BRASS JACKSCREWS, TWO SELF TAPPING ASSEMBLY SCREWS, AND ONE CABLE STRAIN RELIEF STAPLE WITH TWO SELF TAPPING SCREWS



NOTES:

1. THIS HOOD MAY BE USED WITH ANY MALE OR FEMALE 15-PIN OR HIGH DENSITY 26-PIN D-SUB CONNECTOR. (NOT SUPPLIED) SUITABLE FOR CABLES WITH DIAMETERS UP TO .35 INCHES (8.9mm)
2. HARDWARE IS INCLUDED TO FIRMLY ATTACH THE CABLE TO ONE OF THE HOOD SECTIONS. THE HOOD SECTIONS SNAP TOGETHER AND THEN ARE SECURED WITH TWO PHILLIPS FLATHEAD SELF-TAPPING SCREWS.
3. HOOD COLOR IS CHROME PLATED, FINISH IS MATTE, EXCEPT FOR LABEL INSERT AREA.

REGULATORY COMPLIANCE:
EU RoHS DIRECTIVE (MOST RECENT RELEASED VERSION)

THE INFORMATION CONTAINED IN THIS DRAWING IS THE SOLE PROPERTY OF INFINITE ELECTRONICS, INC. ANY REPRODUCTION IN PART OR WHOLE WITHOUT THE WRITTEN PERMISSION OF INFINITE ELECTRONICS, INC. IS PROHIBITED. THESE COMMODITIES, TECHNOLOGY OR SOFTWARE WERE EXPORTED FROM THE UNITED STATES IN ACCORDANCE WITH THE EXPORT ADMINISTRATION REGULATIONS. DIVERSION CONTRARY TO U.S. LAW PROHIBITED.

UNLESS OTHERWISE SPECIFIED LEADING DIMENSIONS ARE INCHES DIMENSIONS IN [] ARE MILLIMETERS	
TOLERANCES:	
.X = ±.2 [5]	FRACTIONS ± 1/32
.XX = ±.02 [0.5]	ANGLES ± 1°
.XXX = ±.005 [0.13]	
CABLE LENGTH TOLERANCES:	
≤12 [305]	≤1 [25] / -0
>12 [305] ≤ 60 [1524]	= +2 [51] / -0
>60 [1524] ≤ 120 [3048]	= +4 [102] / -0
>120 [3048] ≤ 300 [7620]	= +6 [152] / -0
>300 [7620]	= +5% / -0
ALL DIMENSIONS ARE FOR REFERENCE ONLY AND SUBJECT TO CHANGE WITHOUT NOTICE. UN-DIMENSIONED/NON-CRITICAL FEATURES MAY VARY IN SIZE AND LOCATION COLORS MAY VARY	

<p>Fairview Microwave an INFINIT@ brand</p> <p>Website: www.FairviewMicrowave.com Phone: 1.800.715.4396 1.972.649.6678</p>	<p>INTERPRET ALL DIMENSIONS AND TOLERANCES PER ASME Y14.5</p>			
		SCALE: NONE	SHEET: 1 OF 1	
DESCRIPTION: ASSEMBLED D-SUB HOOD KIT, DB15/HD26 MATTE CHROME				
SIZE: A	CAGE CODE: 3FKR5	DRAWN BY: BPUCHASKI	ITEM NO.: FM1050	REV: A