

## Dome Dual Band Antenna Operates From 806 MHz to 2.5 GHz With a Nominal 3 dBi Gain N Female Input Connector

Dome antenna FM51096 from Fairview Microwave is featured in our extensive in-stock radio frequency directional antenna selection. This dual band ceiling dome antenna uses has a frequency range of 806 MHz to 960 MHz, 1.71 GHz to 2.5 GHz and a 3 nominal dBi gain. Our ceiling mount dome antenna uses N female connector and is rated for 50 Watts input. Our radio frequency dome ceiling antenna. FM51096 is part of over 40,000 RF, microwave and millimeter wave components available from Fairview Microwave. This dome RF antenna can ship worldwide the same day of the purchase as with our other available RF parts.

### Configuration

Design	Dome
Polarization	Vertical
Connector Type	N Female

### Electrical Specifications

Description	Min	Typ	Max	Units
Frequency Range	806		2,500	MHz
Input VSWR			1.5:1	
Impedance		50		Ohms
Gain	3			dBi
Input Power			50	Watts

### Specifications by Frequency

Description	Band 1	Band 2	Band 3	Band 4	Band 5	Units
Range	0.806-0.96	1.71-2.5				GHz

### Mechanical Specifications

Radome Material	UV Protected ABS
-----------------	------------------

#### Size

Length	0 in [0 mm]
Width	7.32 in [185.93 mm]
Height	3.14 in [79.76 mm]
Weight	0.57 lbs [258.55 g]

### Environmental Specifications

#### Temperature

Operating Range	-55 to +70 deg C
Storage Range	-40 to +60 deg C

### Compliance Certifications (see [product page](#) for current document)

### Plotted and Other Data

Notes:



### Features:

- Vertical Polarized
- 806 - 960 MHz and 1710 - 2500 MHz ceiling mount antenna
- 3 dBi gain
- Seamless blend in with ceiling tiles
- Type N female connector

### Applications:

- DAS Networks
- Cellular (3G, 4G, LTE, 5G)
- 2.4 GHz Wi-Fi
- IoT
- LoRA, LPWAN
- Wi-Fi applications

Fairview Microwave  
 301 Leora Ln., Suite 100  
 Lewisville, TX 75056  
 Tel: 1-800-715-4396 / (972) 649-6678  
 Fax: (972) 649-6689  
[www.fairviewmicrowave.com](http://www.fairviewmicrowave.com)  
[sales@fairviewmicrowave.com](mailto:sales@fairviewmicrowave.com)

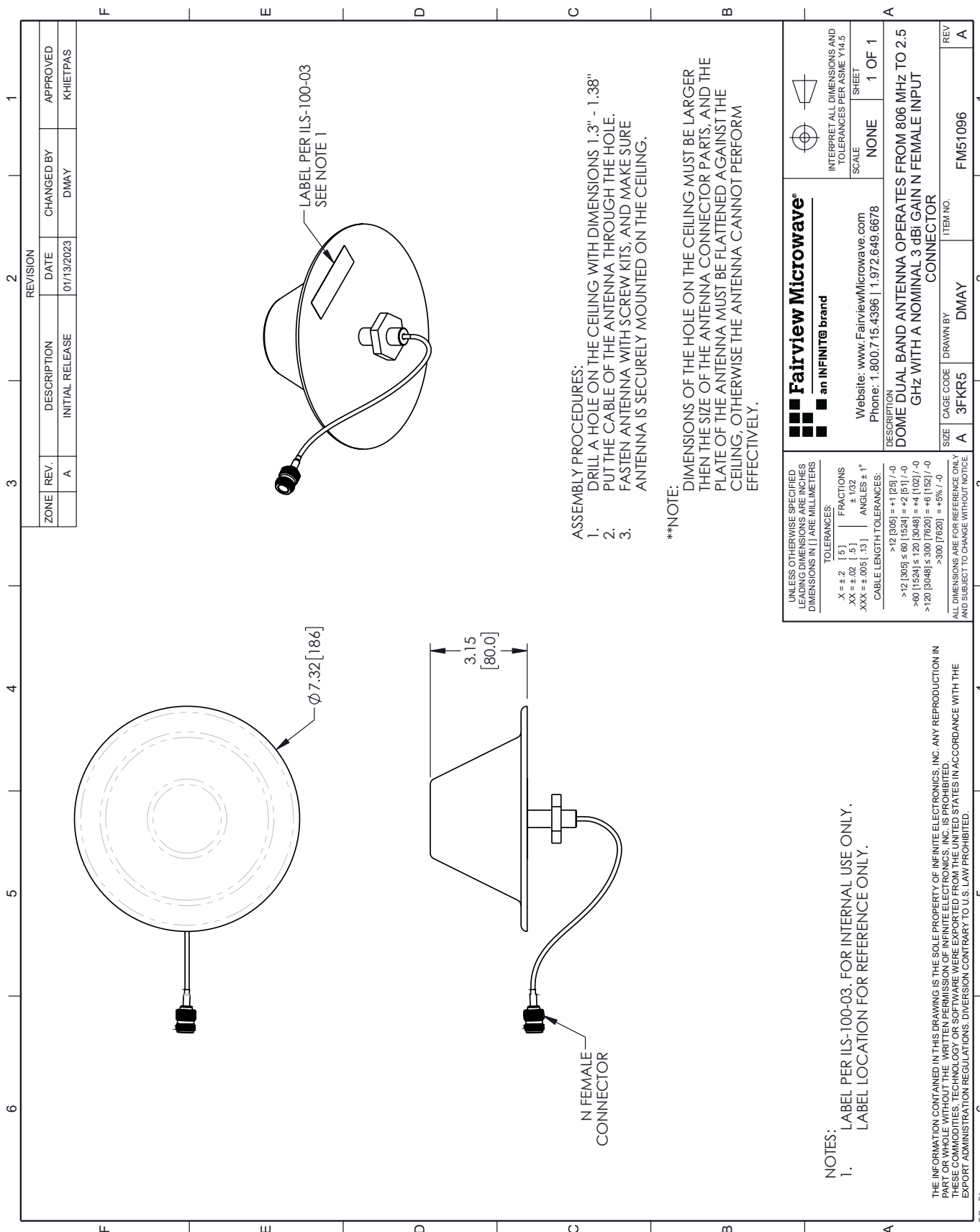
Dome Dual Band Antenna Operates From 806 MHz to 2.5 GHz With a Nominal 3 dBi Gain N Female Input Connector from Fairview Microwave is in-stock and available to ship same-day. All of our RF/microwave products are available off-the-shelf from our ISO 9001:2008 certified facilities in Lewisville, Texas. Fairview Microwave is RF on-demand.

For additional information on this product, please click the following link: [Dome Dual Band Antenna Operates From 806 MHz to 2.5 GHz With a Nominal 3 dBi Gain N Female Input Connector FM51096](#)

URL: <https://www.fairviewmicrowave.com/dbi-dualband-dome-antenna-806-2500-mhz-n-type-connector-fm51096-p.aspx>

The information contained in this document is accurate to the best of our knowledge and representative of the part described herein. It may be necessary to make modifications to the part and/or the documentation of the part, in order to implement improvements. Fairview Microwave reserves the right to make such changes as required. Unless otherwise stated, all specifications are nominal. Fairview Microwave does not make any representation or warranty regarding the suitability of the part described herein for any particular purpose, and Fairview Microwave does not assume any liability arising out of the use of any part or documentation.





**ASSEMBLY PROCEDURES:**

1. DRILL A HOLE ON THE CEILING WITH DIMENSIONS 1.3" - 1.38"
2. PUT THE CABLE OF THE ANTENNA THROUGH THE HOLE.
3. FASTEN ANTENNA WITH SCREW KITS, AND MAKE SURE ANTENNA IS SECURELY MOUNTED ON THE CEILING.

**\*\*NOTE:** DIMENSIONS OF THE HOLE ON THE CEILING MUST BE LARGER THEN THE SIZE OF THE ANTENNA CONNECTOR PARTS, AND THE PLATE OF THE ANTENNA MUST BE FLATTENED AGAINST THE CEILING, OTHERWISE THE ANTENNA CANNOT PERFORM EFFECTIVELY.

<p>UNLESS OTHERWISE SPECIFIED LEADING DIMENSIONS ARE INCHES DIMENSIONS IN [ ] ARE MILLIMETERS</p> <p>TOLERANCES:</p> <p>.X = ± .2 [ .5 ]    FRACTIONS ± .132 [ .33 ]    ANGLES ± 1°</p> <p>.XX = ± .02 [ .1 ]    .XXX = ± .005 [ .13 ]</p> <p>CABLE LENGTH TOLERANCES:</p> <p>&gt;12 [305] = ±1 [25] / -0</p> <p>&gt;60 [1524] ≤ 60 [1524] = +2 [51] / -0</p> <p>&gt;60 [1524] ≤ 120 [3048] = +4 [102] / -0</p> <p>&gt;120 [3048] ≤ 300 [7620] = +6 [152] / -0</p> <p>&gt;300 [7620] = +5% / -0</p>		<p>FAIRVIEW MICROWAVE<sup>®</sup> an INFINIT<sup>®</sup> brand</p> <p>Website: <a href="http://www.FairviewMicrowave.com">www.FairviewMicrowave.com</a></p> <p>Phone: 1.800.715.4396   1.972.649.6678</p>		<p>INTERPRET ALL DIMENSIONS AND TOLERANCES PER ASME Y14.5</p> <p>SCALE: NONE</p> <p>SHEET: 1 OF 1</p>													
<p>REVISION</p> <table border="1"> <tr> <th>ZONE</th> <th>REV.</th> <th>DESCRIPTION</th> <th>DATE</th> <th>CHANGED BY</th> <th>APPROVED</th> </tr> <tr> <td></td> <td>A</td> <td>INITIAL RELEASE</td> <td>01/13/2023</td> <td>DMAY</td> <td>KHIETPAS</td> </tr> </table>		ZONE	REV.	DESCRIPTION	DATE	CHANGED BY	APPROVED		A	INITIAL RELEASE	01/13/2023	DMAY	KHIETPAS	<p>DESCRIPTION: DOME DUAL BAND ANTENNA OPERATES FROM 806 MHz TO 2.5 GHZ WITH A NOMINAL 3 dBi GAIN N FEMALE INPUT CONNECTOR</p>		<p>ITEM NO. FM51096</p>	
ZONE	REV.	DESCRIPTION	DATE	CHANGED BY	APPROVED												
	A	INITIAL RELEASE	01/13/2023	DMAY	KHIETPAS												
<p>ALL DIMENSIONS ARE FOR REFERENCE ONLY AND SUBJECT TO CHANGE WITHOUT NOTICE</p>		<p>SIZE: A    CAGE CODE: 3FKR5    DRAWN BY: DMAY</p>		<p>REV: A</p>													

**NOTES:**

1. LABEL PER ILS-100-03, FOR INTERNAL USE ONLY. LABEL LOCATION FOR REFERENCE ONLY.

THE INFORMATION CONTAINED IN THIS DRAWING IS THE SOLE PROPERTY OF INFINITE ELECTRONICS, INC. ANY REPRODUCTION IN PART OR WHOLE WITHOUT THE WRITTEN PERMISSION OF INFINITE ELECTRONICS, INC. IS PROHIBITED. THESE COMMODITIES, TECHNOLOGY OR SOFTWARE WERE EXPORTED FROM THE UNITED STATES IN ACCORDANCE WITH THE EXPORT ADMINISTRATION REGULATIONS. DIVERSION CONTRARY TO U.S. LAW PROHIBITED.