

## 4900-6200 MHz, Flat Panel Antenna, 23 dBi gain, N Female Connector, 2 Ports, H/V or 45 Deg. Slant

Fairview Microwave's FM51FP1008 is a single band MIMO flat panel antenna that ships on the same day as ordered. It has a frequency range of 4900 to 6200 MHz, providing stability over a wide bandwidth to support gigabit transmissions and has operating temperature ranging from -40 to 60°C. This antenna has an 23 dBi high gain, which describes electrical power conversion capability.

The Fairview Microwave FM51FP1008 flat panel antenna has a type N female connector capable of carrying microwave frequencies used to join coaxial cables. This point-to-point antenna has a 50 Ohms impedance and is highly directional, which means it receives greater power in a specific direction. This antenna features dual slant (V/H or  $\pm 45^\circ$ ) polarization, which makes them compatible with any single or dual polarized 2 x 2 MIMO radio and eliminates the risk of link strength degradation due to polarization mismatch.

Fairview Microwave FM51FP1008 white flat panel antenna has a maximum input VSWR of 1.7:1. It has 100 W maximum power per port within which it has the ability to perform without damage. This antenna has dc ground lightning protection to protect the system from damage due to lightning strikes. This high-performance 23 dBi Wi-Fi 6e antenna is ideal for indoor or outdoor, point to point data links (PtP), point to multi-point data links (PtMP), Wi-Fi 5, Wi-Fi 6, unlicensed 5GHz and 6GHz bands, 5G bands - n46, n47, n96, n102, 2x2 MIMO capability and, high speed internet access applications.

Fairview Microwave has one of the largest in-stock collections of antennas with our wide selection of superior quality RF parts, that ship same day. Use our on-line ordering system to purchase your FM51FP1008 MIMO flat panel antenna 24 hours a day with same-day shipping and no MOQs (minimum order quantities).

### Configuration

Design	Flat Panel
Gain	23
Polarization	H/V or 45 Deg. Slant
Connector Type	N Female
Number of Ports	2
Lightning Protection	DC Gounded

### Electrical Specifications

Description	Min	Typ	Max	Units
Frequency Range	4,900		6,200	MHz
Input VSWR			1.7:1	
Impedance		50		Ohms
Gain		23		dBi
Front to Back Ratio		23		dB
Horizontal (Azimuth) Beam Width		12		Degrees
Vertical (Elevation) Beam Width		12		Degrees
Input Power			100	Watts

### Mechanical Specifications

Radome Material	UABS
-----------------	------



### Features:

- 2-port Flat panel antenna
- 4900 to 6200 MHz, 23 dBi
- VSWR < 1.7:1
- All aluminum material
- Dual slant (V/H or  $\pm 45^\circ$ )
- Horizontal beam-width 12°
- Vertical beam-width 12°
- 100 W max input power per port
- 2 x N type female connectors
- DC ground
- Water proof rating: IP-65

### Applications:

- Indoor or outdoor
- Point to point data links (PtP)
- Point to multi-point data links (PtMP)
- Wi-Fi 5, Wi-Fi 6
- Unlicensed 5GHz and 6GHz bands
- 5G bands - n46, n47, n96, n102
- 2x2 MIMO capability
- High speed internet access

Fairview Microwave  
 301 Leora Ln., Suite 100  
 Lewisville, TX 75056  
 Tel: 1-800-715-4396 / (972) 649-6678  
 Fax: (972) 649-6689  
[www.fairviewmicrowave.com](http://www.fairviewmicrowave.com)  
[sales@fairviewmicrowave.com](mailto:sales@fairviewmicrowave.com)

**Size**

Length	12.01 in [305.05 mm]
Width	12.01 in [305.05 mm]
Height	1.69 in [42.93 mm]
Mounting Mast Diameter	1.1811 to 2.16535 in [30.00 to 55.00 mm]
Weight	22.25 lbs [10.09 kg]

**Environmental Specifications**

**Temperature**

Operating Range -40 to +60 deg C

Environment

Waterproof

Wind Loading

124.274 MPH [200 KPH]

Ingress Protection

IP-65

**Compliance Certifications** (see [product page](#) for current document)

**Plotted and Other Data**

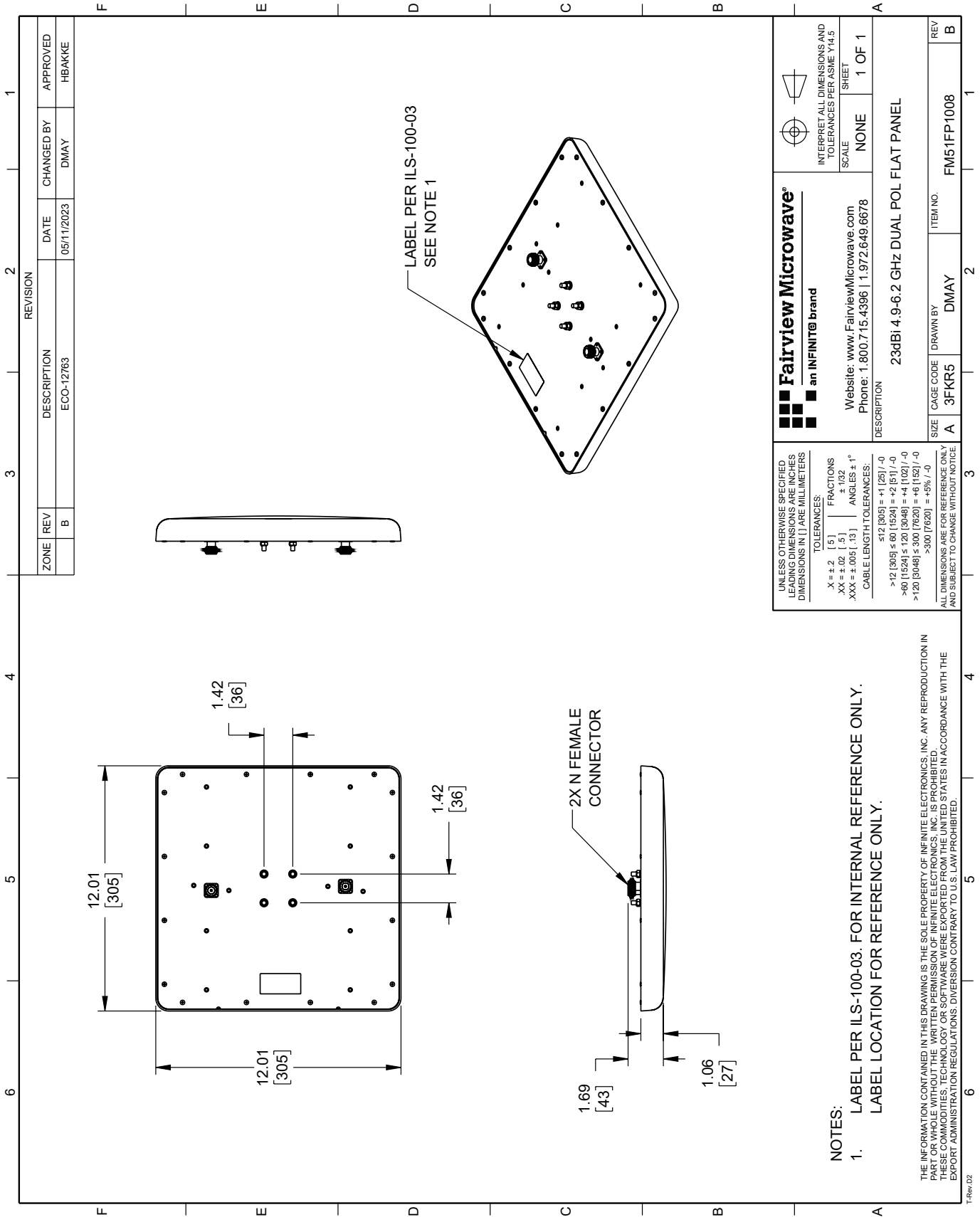
Notes:

4900-6200 MHz, Flat Panel Antenna, 23 dBi gain, N Female Connector, 2 Ports, H/V or 45 Deg. Slant from Fairview Microwave is in-stock and available to ship same-day. All of our RF/microwave products are available off-the-shelf from our ISO 9001:2008 certified facilities in Lewisville, Texas. Fairview Microwave is RF on-demand.

For additional information on this product, please click the following link: [4900-6200 MHz, Flat Panel Antenna, 23 dBi gain, N Female Connector, 2 Ports, H/V or 45 Deg. Slant FM51FP1008](#)

URL: <https://www.fairviewmicrowave.com/23-dbi-flat-panel-antenna-4900-6200-mhz-n-type-connector-fm51fp1008-p.aspx>

The information contained in this document is accurate to the best of our knowledge and representative of the part described herein. It may be necessary to make modifications to the part and/or the documentation of the part, in order to implement improvements. Fairview Microwave reserves the right to make such changes as required. Unless otherwise stated, all specifications are nominal. Fairview Microwave does not make any representation or warranty regarding the suitability of the part described herein for any particular purpose, and Fairview Microwave does not assume any liability arising out of the use of any part or documentation.



ZONE REV		REVISION		DATE		CHANGED BY		APPROVED	
B		ECO-12763		05/11/2023	DMAY		HBAKKE		

<p><b>Fairview Microwave</b> an INFINIT<sup>®</sup> brand</p> <p>Website: <a href="http://www.FairviewMicrowave.com">www.FairviewMicrowave.com</a> Phone: 1.800.715.4396   1.972.649.6678</p>		<p>INTERPRET ALL DIMENSIONS AND TOLERANCES PER ASME Y14.5 SHEET</p> <p>SCALE NONE</p> <p>SHEET 1 OF 1</p>	
DESCRIPTION 23dBm 4.9-6.2 GHz DUAL POL FLAT PANEL			
SIZE A	CAGE CODE 3FKR5	DRAWN BY DMAY	ITEM NO. FM51FP1008
REV B			

UNLESS OTHERWISE SPECIFIED, LEADING DIMENSIONS ARE IN INCHES DIMENSIONS IN [ ] ARE MILLIMETERS

TOLERANCES:  
 .X = ±.2 [5]    FRACTIONS ±.132  
 .XX = ±.02 [.5]    ANGLES ± 1°  
 .XXX = ±.005 [.13]

CABLE LENGTH TOLERANCES:  
 ≤12 [305] = ±1 [25] / -0  
 >12 [305] ≤ 60 [1524] = +2 [51] / -0  
 >60 [1524] ≤ 120 [3048] = +4 [102] / -0  
 >120 [3048] ≤ 300 [7620] = +6 [152] / -0  
 >300 [7620] = +5% / -0

ALL DIMENSIONS ARE FOR REFERENCE ONLY AND SUBJECT TO CHANGE WITHOUT NOTICE

**NOTES:**

- LABEL PER ILS-100-03. FOR INTERNAL REFERENCE ONLY. LABEL LOCATION FOR REFERENCE ONLY.

THE INFORMATION CONTAINED IN THIS DRAWING IS THE SOLE PROPERTY OF INFINITE ELECTRONICS, INC. ANY REPRODUCTION IN PART OR WHOLE WITHOUT THE WRITTEN PERMISSION OF INFINITE ELECTRONICS, INC. IS PROHIBITED. THESE COMMODITIES, TECHNOLOGY OR SOFTWARE WERE EXPORTED FROM THE UNITED STATES IN ACCORDANCE WITH THE EXPORT ADMINISTRATION REGULATIONS. DIVERSION CONTRARY TO U.S. LAW PROHIBITED.