

2 dBi WideBand Poly Spring Vehicular Antenna 144-174 MHz NMO Mount Connector

This wide band VHF mobile omnidirectional antenna is ideally suited for multipoint mobile applications including service vehicles, public transportation, public safety, mining and construction vehicles, as well numerous other commercial and industrial applications where mobility and wide coverage is desired. This antenna features a flexible Poly Spring base. Unlike the traditional metal spring base, the Poly Spring will not corrode and does not generate electrical noise when flexed during use. It has a standard TAD/NMO Motorola-type mobile base.

Configuration

Design	Vehicular
Gain	2
Polarization	Linear, Vertical
Connector Type	NMO Mount

Electrical Specifications

Description	Min	Typ	Max	Units
Frequency Range	144		174	MHz
Operational Bandwidth		30		MHz
Input VSWR		1.8:1	2:1	
Impedance		50		Ohms
Gain		2		dBi
Horizontal (Azimuth) Beam Width		360		Degrees
Vertical (Elevation) Beam Width		70		Degrees
Input Power			150	Watts

Mechanical Specifications

Size	
Length	19.33 in [490.98 mm]
Width	0 in [0 mm]
Height	0 in [0 mm]
Weight	0.166 lbs [75.3 g]

Environmental Specifications

Temperature	
Operating Range	-40 to +85 deg C
Humidity	95%
Corrosion	Salt Fog

Compliance Certifications (see [product page](#) for current document)

Plotted and Other Data

Notes:



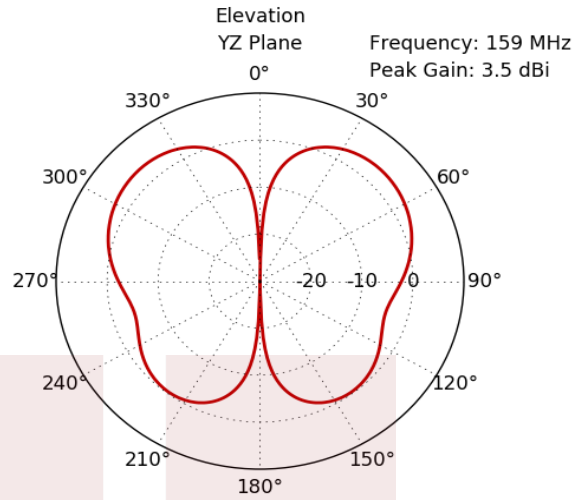
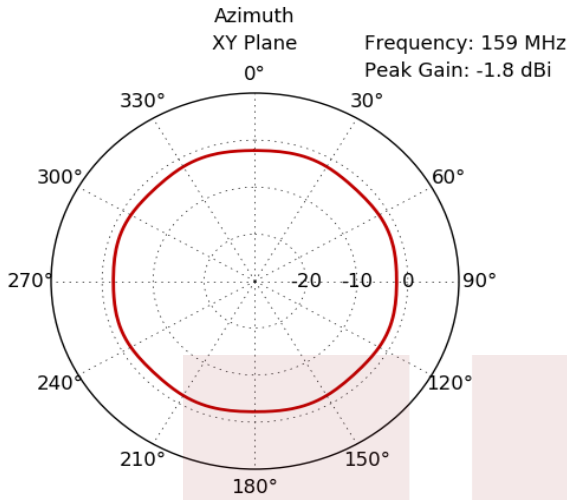
Features:

- Wide band performance; no tuning required
- NMO mount, Black Chrome Finish
- Flexible Black Polymer Alloy Spring
- O-ring seal for waterproof construction
- Durable Xenoy™ base with TPV over mold dust seal and grip ring

Applications:

- Service Vehicles
- Public safety
- Public Transportation
- Mining & Construction

Fairview Microwave
301 Leora Ln., Suite 100
Lewisville, TX 75056
Tel: 1-800-715-4396 / (972) 649-6678
Fax: (972) 649-6689
www.fairviewmicrowave.com
sales@fairviewmicrowave.com

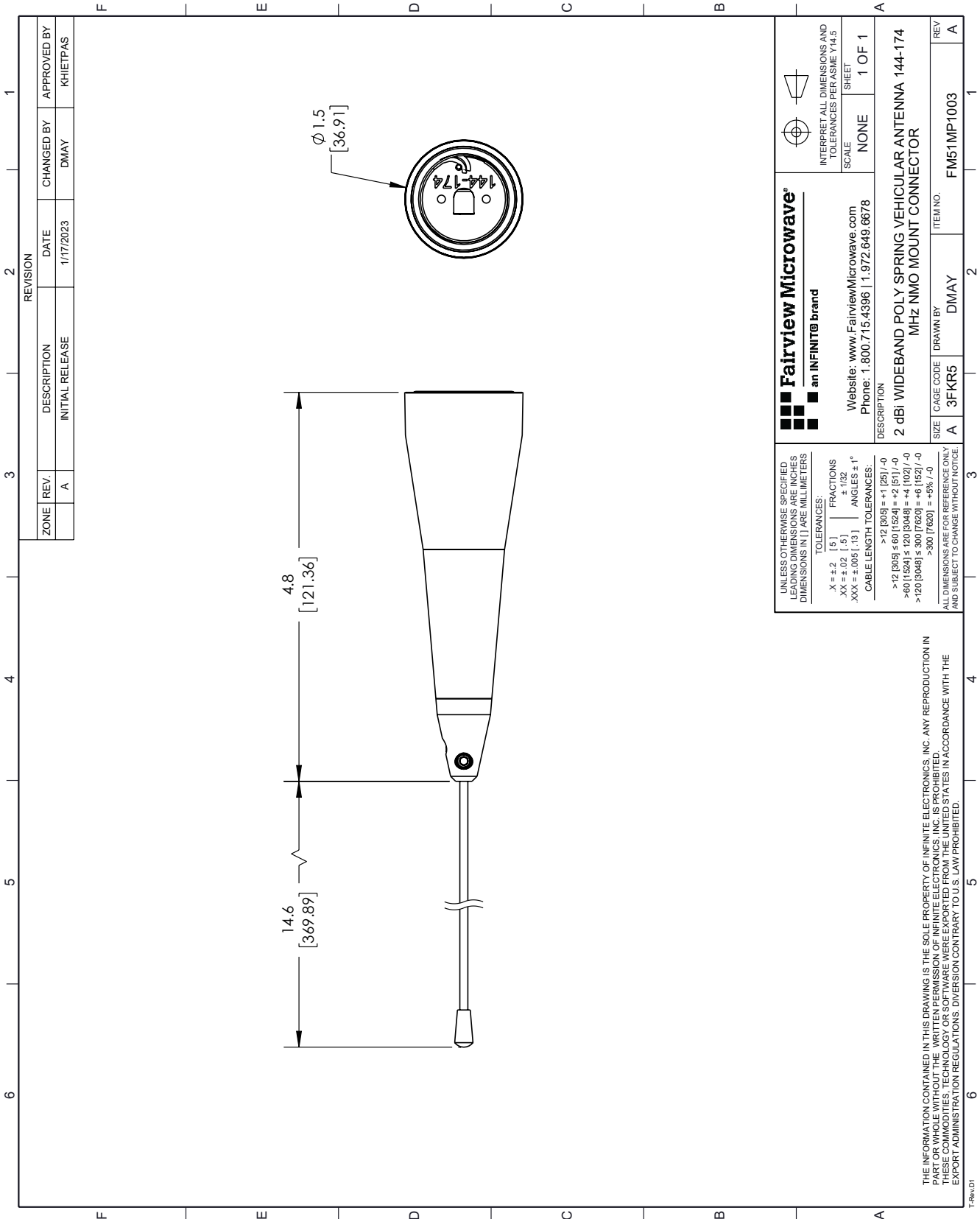


2 dBi WideBand Poly Spring Vehicular Antenna 144-174 MHz NMO Mount Connector from Fairview Microwave is in-stock and available to ship same-day. All of our RF/microwave products are available off-the-shelf from our ISO 9001:2008 certified facilities in Lewisville, Texas. Fairview Microwave is RF on-demand.

For additional information on this product, please click the following link: [2 dBi WideBand Poly Spring Vehicular Antenna 144-174 MHz NMO Mount Connector FM51MP1003](https://www.fairviewmicrowave.com/2-dbi-wideband-poly-spring-vehicular-antenna-144-174-mhz-nmo-mount-connector-fm51mp1003)

URL: <https://www.fairviewmicrowave.com/2-dbi-wideband-poly-spring-vehicular-antenna-144-174-mhz-nmo-mount-connector-fm51mp1003-p.aspx>

The information contained in this document is accurate to the best of our knowledge and representative of the part described herein. It may be necessary to make modifications to the part and/or the documentation of the part, in order to implement improvements. Fairview Microwave reserves the right to make such changes as required. Unless otherwise stated, all specifications are nominal. Fairview Microwave does not make any representation or warranty regarding the suitability of the part described herein for any particular purpose, and Fairview Microwave does not assume any liability arising out of the use of any part or documentation.



REVISION		DATE	CHANGED BY	APPROVED BY
ZONE	REV.	DESCRIPTION	INITIAL RELEASE	
	A		DMAY	KHIETPAS

<p>Fairview Microwave an INFINIT[®] brand</p>		<p>INTERPRET ALL DIMENSIONS AND TOLERANCES PER ASME Y14.5</p>
Website: www.FairviewMicrowave.com Phone: 1.800.715.4396 1.972.649.6678		SCALE: NONE SHEET: 1 OF 1
DESCRIPTION: 2 dBi WIDEBAND POLY SPRING VEHICULAR ANTENNA 144-174 MHz NMO MOUNT CONNECTOR		
SIZE	CAGE CODE	ITEM NO.
A	3FKR5	DMAY

UNLESS OTHERWISE SPECIFIED, DIMENSIONS ARE IN INCHES UNLESS OTHERWISE SPECIFIED. DIMENSIONS IN LARGE MILLIMETERS.

TOLERANCES:
 .X = ±.2 [5] FRACTIONS ±.005 [.13] ANGLES ± 1°
 .XX = ±.02 [.5] ±.002 [.05] ANGLES ± 1°
 .XXX = ±.005 [.13] ANGLES ± 1°

CABLE LENGTH TOLERANCES:
 >12 [305] ≤ 60 [1524] = +2 [51] / -0
 >60 [1524] ≤ 120 [3048] = +4 [102] / -0
 >120 [3048] ≤ 300 [7620] = +6 [152] / -0
 >300 [7620] = +5% / -0

ALL DIMENSIONS ARE FOR REFERENCE ONLY AND SUBJECT TO CHANGE WITHOUT NOTICE.

THE INFORMATION CONTAINED IN THIS DRAWING IS THE SOLE PROPERTY OF INFINITE ELECTRONICS, INC. ANY REPRODUCTION IN WHOLE OR IN PART WITHOUT THE WRITTEN PERMISSION OF INFINITE ELECTRONICS, INC. IS PROHIBITED. THESE COMMODITIES, TECHNOLOGY OR SOFTWARE WERE EXPORTED FROM THE UNITED STATES IN ACCORDANCE WITH THE EXPORT ADMINISTRATION REGULATIONS. DIVERSION CONTRARY TO U.S. LAW PROHIBITED.