

2.4 GHz/900 MHz 3 dBi Omni Antenna - NMO Connector

This very compact mobile-mount dual band omni antenna is designed to operate in 2.4 GHz or 900 MHz bands and provides broad coverage and 3 dBi gain. The Dual-Band design of this antenna eliminates the need to purchase different antennas for each frequency. In the 2.4 GHz ISM band, it is ideally suited for ISM, IEEE 802.11b, 802.11g and 802.11n wireless LANs, Bluetooth® and other WLAN applications where omni-directional coverage and low visibility are desired. In the 900 MHz band, this antenna is ideally suited for ISM, GSM and RFID applications as well as 900MHz wireless LAN and Cellular systems.

This RF antenna is only 2.7" long and features an aesthetic black finish. It is designed with a standard TAD/NMO Motorola-type connection that allows for ease of installation to similar TAD/NMO mounting systems. Because of its near-invisible design this antenna is ideal for use on vehicles where vandal-resistance and aesthetics are important.

Configuration

Design	Mobile
Gain	3 to 3 dBi
Polarization	Vertical
Connector Type	NMO Mount
Number of Ports	1

Electrical Specifications

Description	Min	Typ	Max	Units
Frequency Range	900		2,500	MHz
Impedance		50		Ohms
Gain		3		dBi
Input Power			50	Watts

Specifications by Frequency

Description	Band 1	Band 2	Band 3	Band 4	Band 5	Units
Range	0.9-0.96	2.4-2.5				GHz
Horiz. Beam Width	360	360				Degrees
Vert. Beam Width	60					Degrees
Max Input Power		50				

Mechanical Specifications

Radome Material	ABS
Size	
Length	3 in [76.2 mm]
Width	1.4 in [35.56 mm]
Height	1.4 in [35.56 mm]
Weight	0.22 lbs [99.79 g]

Environmental Specifications

Temperature	
Operating Range	-40 to +85 deg C



Features:

- Can be used with 2.4 GHz and 900 MHz systems
- TAD/NMO Mounting System
- Weather-Proof

Applications:

- 802.11b, 802.11g, 802.11n and Bluetooth® compatible (2.4 GHz Band)
- 2.4 GHz and 900 MHz Wireless Video Systems
- Multipoint and Mobile Applications
- ISM, GSM, RFID, 900 MHz Cellular compatible (900 MHz Band)

Fairview Microwave
 301 Leora Ln., Suite 100
 Lewisville, TX 75056
 Tel: 1-800-715-4396 / (972) 649-6678
 Fax: (972) 649-6689
www.fairviewmicrowave.com
sales@fairviewmicrowave.com

Wind Loading

150 MPH [241.4 KPH]

Compliance Certifications (see [product page](#) for current document)

Plotted and Other Data

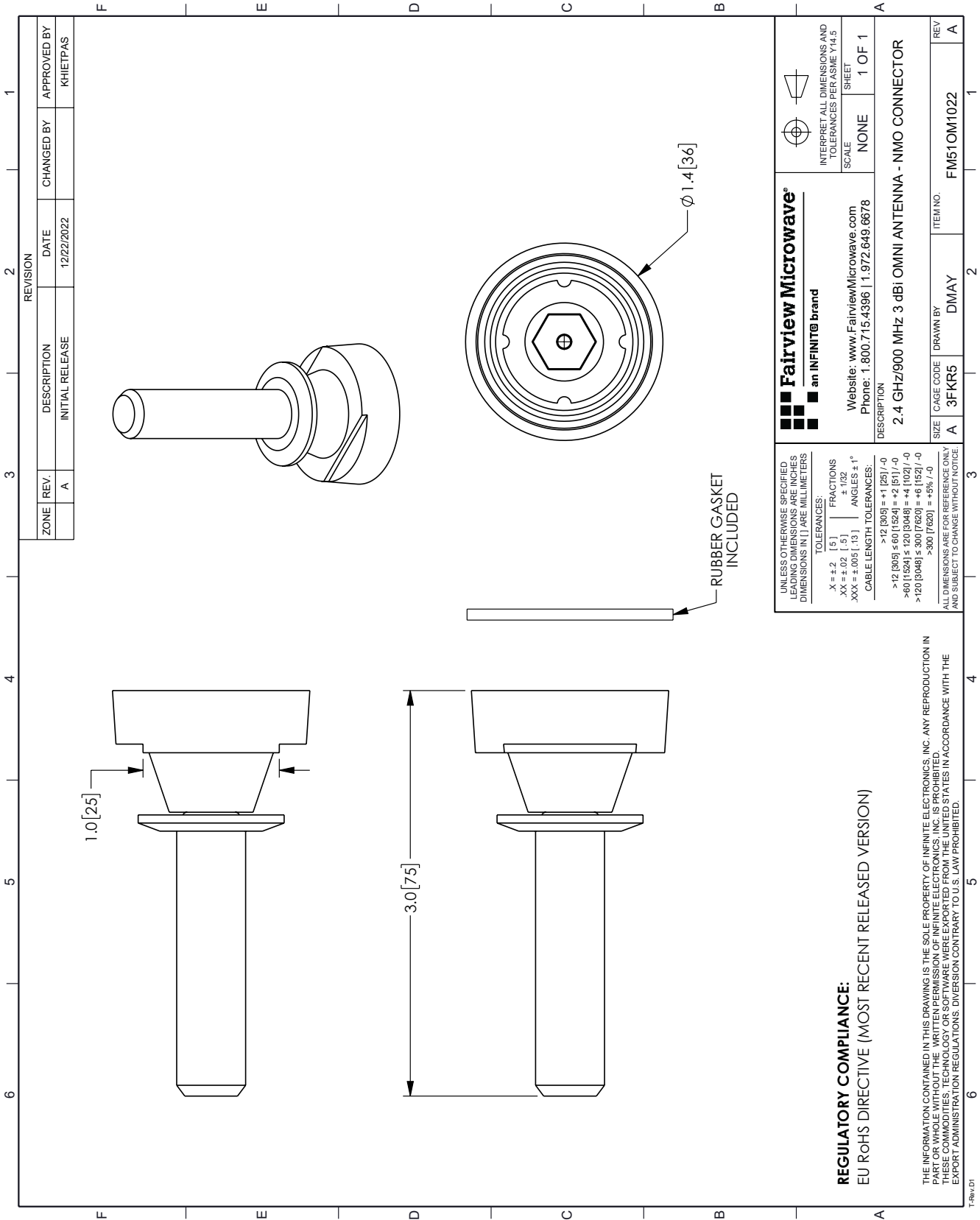
Notes:

2.4 GHz/900 MHz 3 dBi Omni Antenna - NMO Connector from Fairview Microwave is in-stock and available to ship same-day. All of our RF/microwave products are available off-the-shelf from our ISO 9001:2008 certified facilities in Lewisville, Texas. Fairview Microwave is RF on-demand.

For additional information on this product, please click the following link: [2.4 GHz/900 MHz 3 dBi Omni Antenna - NMO Connector FM51OM1022](#)

URL: <https://www.fairviewmicrowave.com/dual-antenna-3-dbi-gain-nmo-mount-fm51om1022-p.aspx>

The information contained in this document is accurate to the best of our knowledge and representative of the part described herein. It may be necessary to make modifications to the part and/or the documentation of the part, in order to implement improvements. Fairview Microwave reserves the right to make such changes as required. Unless otherwise stated, all specifications are nominal. Fairview Microwave does not make any representation or warranty regarding the suitability of the part described herein for any particular purpose, and Fairview Microwave does not assume any liability arising out of the use of any part or documentation.



REVISION		DATE	CHANGED BY	APPROVED BY
ZONE	REV.	DESCRIPTION	INITIAL RELEASE	
	A		12/22/2022	KHIETPAS

 Fairview Microwave[®] an INFINIT [®] brand		INTERPRET ALL DIMENSIONS AND TOLERANCES PER ASME Y14.5 SCALE: NONE SHEET: 1 OF 1
Website: www.FairviewMicrowave.com Phone: 1.800.715.4396 1.972.649.6678		DESCRIPTION 2.4 GHz/900 MHz 3 dBi OMNI ANTENNA - NMO CONNECTOR
SIZE	CAGE CODE	ITEM NO.
A	3FKR5	FM510M1022
REV	DRAWN BY	REV
A	DMAY	A

UNLESS OTHERWISE SPECIFIED, DIMENSIONS ARE IN INCHES AND DIMENSIONS IN LARGE MILLIMETERS

TOLERANCES:

.X = ±.2 [5] | FRACTIONS ±.005 [13] | ANGLES ± 1°

.XX = ±.02 [5] | ±.032

.XXX = ±.005 [13] | ±.032

CABLE LENGTH TOLERANCES:

>12 [305] ≤ 60 [1524] = +1 [25] / -0

>60 [1524] ≤ 120 [3048] = +4 [102] / -0

>120 [3048] ≤ 300 [7620] = +6 [152] / -0

>300 [7620] = +5% / -0

ALL DIMENSIONS ARE FOR REFERENCE ONLY AND SUBJECT TO CHANGE WITHOUT NOTICE.

REGULATORY COMPLIANCE:
 EU RoHS DIRECTIVE (MOST RECENT RELEASED VERSION)

THE INFORMATION CONTAINED IN THIS DRAWING IS THE SOLE PROPERTY OF INFINITE ELECTRONICS, INC. ANY REPRODUCTION IN WHOLE OR IN PART WITHOUT THE WRITTEN PERMISSION OF INFINITE ELECTRONICS, INC. IS PROHIBITED. THESE COMMODITIES, TECHNOLOGY OR SOFTWARE WERE EXPORTED FROM THE UNITED STATES IN ACCORDANCE WITH THE EXPORT ADMINISTRATION REGULATIONS. DIVERSION CONTRARY TO U.S. LAW PROHIBITED.