

### 3 dBi DualBand Rubber Duck Portable Antenna 698-2700 MHz SMA Connector

The FM51RD1027 4G Rubber Duck Antenna from Fairview Microwave is a high performance omnidirectional "rubber-duck" antenna. This rubber duck is designed for the 698 MHz to 2700 MHz bands and is available to ship same day. It features a RIGID SMA-Plug (male) connector. This straight SMA allows the FM51RD1027 to be mounted directly to terminals and other fixed radios. It is a coaxial sleeve design with an omni-directional pattern. The FM51RD1027 is ideally suited for 4G, LTE, IoT, Zigbee, Z-Wave and Bluetooth bands.

The Fairview Microwave high performance rubber-duck FM51RD1027 is a rubber coated RIGID antenna providing broad coverage and 3 dBi gain. This SMA male rubber duck is suitable for commercial radios in public and private 4G and Cellular networks that are equipped with SMA female connectors. Fairview Microwave's FM51RD1027 supports 700, 800, 850, 900, 1800, 2100, 2400, and 2600 MHz bands.

This 4G 698 MHz to 2700 MHz rubber duck antenna with a SMA male connector, as well as our wide selection of superior quality RF parts, ships same day. Contact our knowledgeable and friendly technical support and sales staff for your answers on antennas or other Fairview Microwave products.

#### Configuration

Design	Portable
Gain	1 to 3 dBi
Polarization	Vertical
Connector Type	SMA Male

#### Electrical Specifications

Description	Min	Typ	Max	Units
Frequency Range	698		2,700	MHz
Input VSWR		2:1	4.5:1	
Impedance		50		Ohms
Gain	1	3		dBi
Horizontal (Azimuth) Beam Width		360		Degrees
Vertical (Elevation) Beam Width		45		Degrees
Input Power			5	Watts

#### Specifications by Frequency

Description	Band 1	Band 2	Band 3	Band 4	Band 5	Units
Range	0.698-0.96	1.71-2.7				GHz
Gain	1	3				dBi
Horiz. Beam Width	360	360				Degrees
Vert. Beam Width	60	45				Degrees
VSWR	4.5:1	2:1				

#### Mechanical Specifications

Radome Material	PU
<b>Size</b>	
Length	0.39 in [9.91 mm]



#### Features:

- IP67 Ruggedized Waterproof Design
- 0 to 4 dBi gain
- Rigid SMA Male Connector

#### Applications:

- Infotainment Systems, Routers, WiFi Hotspots, HD Video Transmission, Gateways, Dash Cameras, Public Transportation
- Connected Cars or Self-Driving Cars, Fleet Management, Logistics
- 4G & 5G Networks
- 700, 850, 900, 1800, 1900, 2100, 2600 MHz Bands
- IoT, Cellular, Zigbee, Z-Wave, Bluetooth

Fairview Microwave  
301 Leora Ln., Suite 100  
Lewisville, TX 75056  
Tel: 1-800-715-4396 / (972) 649-6678  
Fax: (972) 649-6689  
[www.fairviewmicrowave.com](http://www.fairviewmicrowave.com)  
[sales@fairviewmicrowave.com](mailto:sales@fairviewmicrowave.com)

Width	0.39 in [9.91 mm]
Height	2.1 in [53.34 mm]
Weight	0.007 lbs [3.18 g]

### Environmental Specifications

#### Temperature

Operating Range	-20 to +65 deg C
Storage Range	-30 to +70 deg C

Environment	Waterproof
Humidity	95%
Ingress Protection	IP67

### Compliance Certifications (see [product page](#) for current document)

### Plotted and Other Data

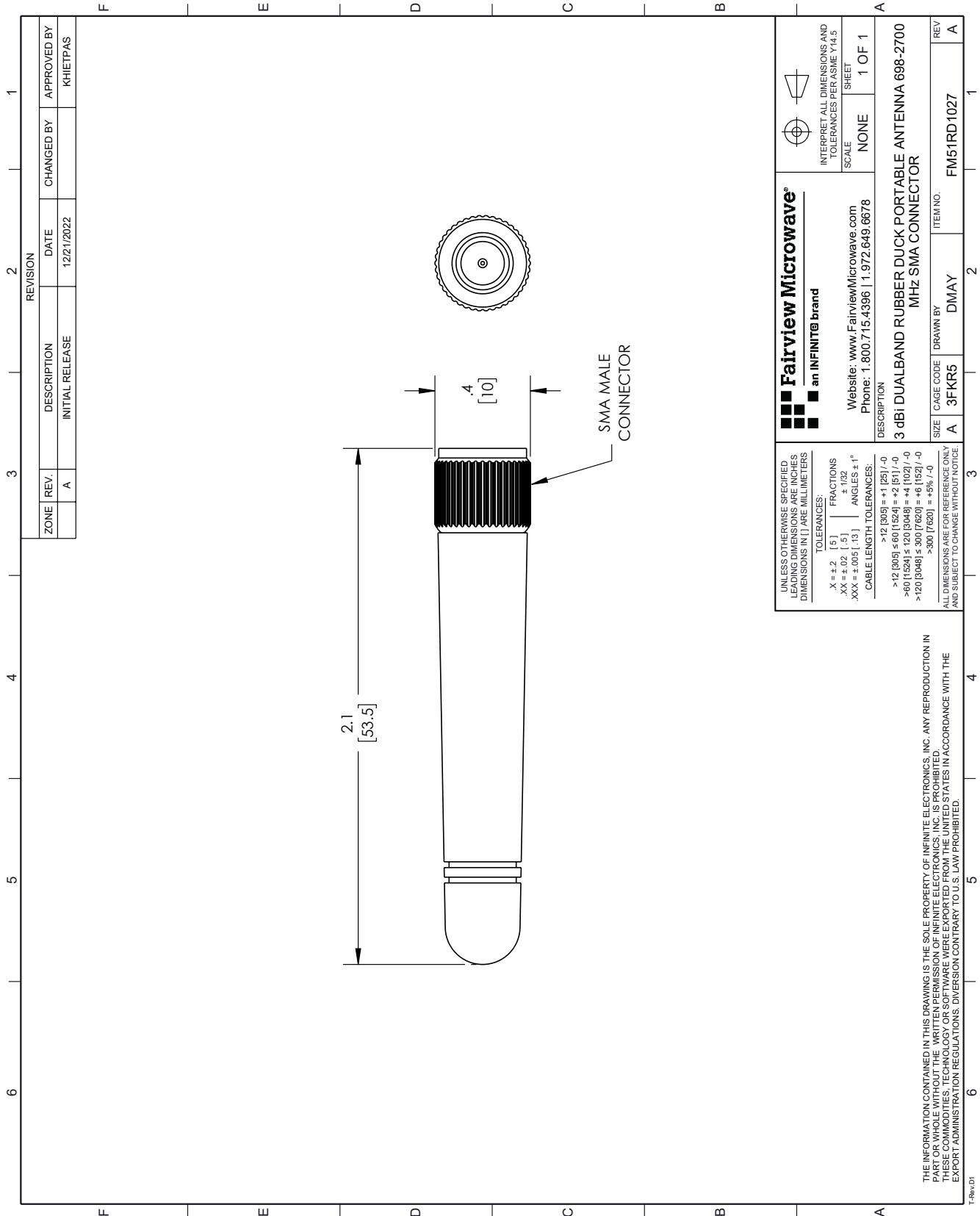
Notes:

3 dBi DualBand Rubber Duck Portable Antenna 698-2700 MHz SMA Connector from Fairview Microwave is in-stock and available to ship same-day. All of our RF/microwave products are available off-the-shelf from our ISO 9001:2008 certified facilities in Lewisville, Texas. Fairview Microwave is RF on-demand.

For additional information on this product, please click the following link: [3 dBi DualBand Rubber Duck Portable Antenna 698-2700 MHz SMA Connector FM51RD1027](#)

URL: <https://www.fairviewmicrowave.com/dual-antenna-698-mhz-2.7-ghz-3-dbi-gain-sma-fm51rd1027-p.aspx>

The information contained in this document is accurate to the best of our knowledge and representative of the part described herein. It may be necessary to make modifications to the part and/or the documentation of the part, in order to implement improvements. Fairview Microwave reserves the right to make such changes as required. Unless otherwise stated, all specifications are nominal. Fairview Microwave does not make any representation or warranty regarding the suitability of the part described herein for any particular purpose, and Fairview Microwave does not assume any liability arising out of the use of any part or documentation.



REVISION		DATE	CHANGED BY	APPROVED BY
ZONE	REV.	DESCRIPTION	INITIAL RELEASE	
	A		12/21/2022	KHIETPAS

<b>Fairview Microwave<sup>®</sup></b> an INFINIT <sup>®</sup> brand Website: <a href="http://www.FairviewMicrowave.com">www.FairviewMicrowave.com</a> Phone: 1.800.715.4396   1.972.649.6678		INTERPRET ALL DIMENSIONS AND TOLERANCES PER ASME Y14.5 SCALE: NONE SHEET: 1 OF 1
DESCRIPTION <b>3 dB DUALBAND RUBBER DUCK PORTABLE ANTENNA 698-2700 MHz SMA CONNECTOR</b>		
UNLESS OTHERWISE SPECIFIED, DIMENSIONS ARE IN INCHES UNLESS OTHERWISE NOTED. DIMENSIONS IN LARGE MILLIMETERS.	TOLERANCES: .X = ±.2 [5] FRACTIONS .XX = ±.02 [.5] ±.152 .XXX = ±.005 [.13] ANGLES ± 1°	CABLE LENGTH TOLERANCES: >12 [305] ≤ 60 [1524] = ±1 [25] / -0 >60 [1524] ≤ 120 [3048] = ±4 [102] / -0 >120 [3048] ≤ 300 [7620] = ±6 [152] / -0 >300 [7620] = ±5% / -0
THE INFORMATION CONTAINED IN THIS DRAWING IS THE SOLE PROPERTY OF INFINITE ELECTRONICS, INC. ANY REPRODUCTION IN WHOLE OR IN PART WITHOUT THE WRITTEN PERMISSION OF INFINITE ELECTRONICS, INC. IS PROHIBITED. THESE COMMODITIES, TECHNOLOGY OR SOFTWARE WERE EXPORTED FROM THE UNITED STATES IN ACCORDANCE WITH THE EXPORT ADMINISTRATION REGULATIONS. DIVERSION CONTRARY TO U.S. LAW PROHIBITED.	SIZE: A CAGE CODE: 3FKR5 DRAWN BY: DMAY	ITEM NO.: FM51RD1027 REV: A