

SMA Variable Phase Shifter with an Adjustable Phase of 30 Deg. Per GHz Minimum, from DC - 18 GHz and Digital Dial



FM8255A

Features

- Adjustable Phase Shifter
- DC to 18 GHz Range
- 30 Degree per GHz Minimum Optimized Control Range
- 100 Watts CW Max Input Power
- Insertion Loss 1 dB Max
- Digital Dial

Applications

- Test & Measurements
- Radar Developments
- Military Communication Systems
- Tracking Systems
- Direction Finding Systems
- Antenna Test
- Frequency Translation

Description

Coaxial RF Variable phase shifter FM8255A is just one of many radio frequency components specifically stocked to be ready for quick shipment. Fairview Microwave RF variable phase shifter is manufactured with SMA connectors and has a phase adjustment of 30 degrees per GHz minimum. This SMA 30 degrees variable phase shifter is rated for a minimum frequency of DC and a maximum frequency of 18 GHz. Fairview Microwave variable phase shifter with SMA connectors has a maximum input power of 100 watts. RF variable phase shifter design for part number FM8255A is rated for a maximum VSWR of 1.6:1. This particular FM8255A part has a digital dial. The RF specs for this Fairview variable phase shifting component can be found on its radio frequency phase shifter PDF specifications above. Our SMA 30 degrees shifter is one radio frequency component of more than one million microwave and millimeter wave RF parts in stock. Fairview Microwave is where to buy a variable phase shifter for quick service and easy worldwide shipment. Fairview also stocks a wide selection of other radio frequency phase shifting products that ship in the same day from our warehouses as with the rest of our other RF/microwave and millimeter wave components.

Electrical Specifications (Values at +25° C, Sea Level)

Description	Min	Typ	Max	Units
Frequency Range	DC		18	GHz
Impedance		50		Ohms
Phase Adjustment	30			Deg/GHz
Input VSWR			1.6:1	
Insertion Loss			1	dB
Insertion Phase		320		Degrees
Input Power, CW			100	Watts
Input Power, Peak			3	kWatts

Electrical Specification Notes:
Insertion Phase @ 1 GHz: 320° (min setting)

Absolute Maximum Rating

Mechanical Specifications

Size

Length 3.75 in [95.25 mm]
Width/Diameter 2 in [50.8 mm]

SMA Variable Phase Shifter with an Adjustable Phase of 30 Deg. Per GHz Minimum, from DC - 18 GHz and Digital Dial



FM8255A

Height	1 in [25.4 mm]
Weight	0.878 lbs [398.25 g]
Body Material and Plating	Aluminum
Configuration	
Input Connector	SMA Female
Output Connector	SMA Female

Environmental Specifications

Temperature

Compliance Certifications (see [product page](#) for current document)

Plotted and Other Data

SMA Variable Phase Shifter with an Adjustable Phase of 30 Deg. Per GHz Minimum, from DC - 18 GHz and Digital Dial from Fairview Microwave is in-stock and available to ship same-day. All of our RF/microwave products are available off-the-shelf from our ISO 9001:2008 certified facilities in Lewisville, Texas. Fairview Microwave is RF on-demand.

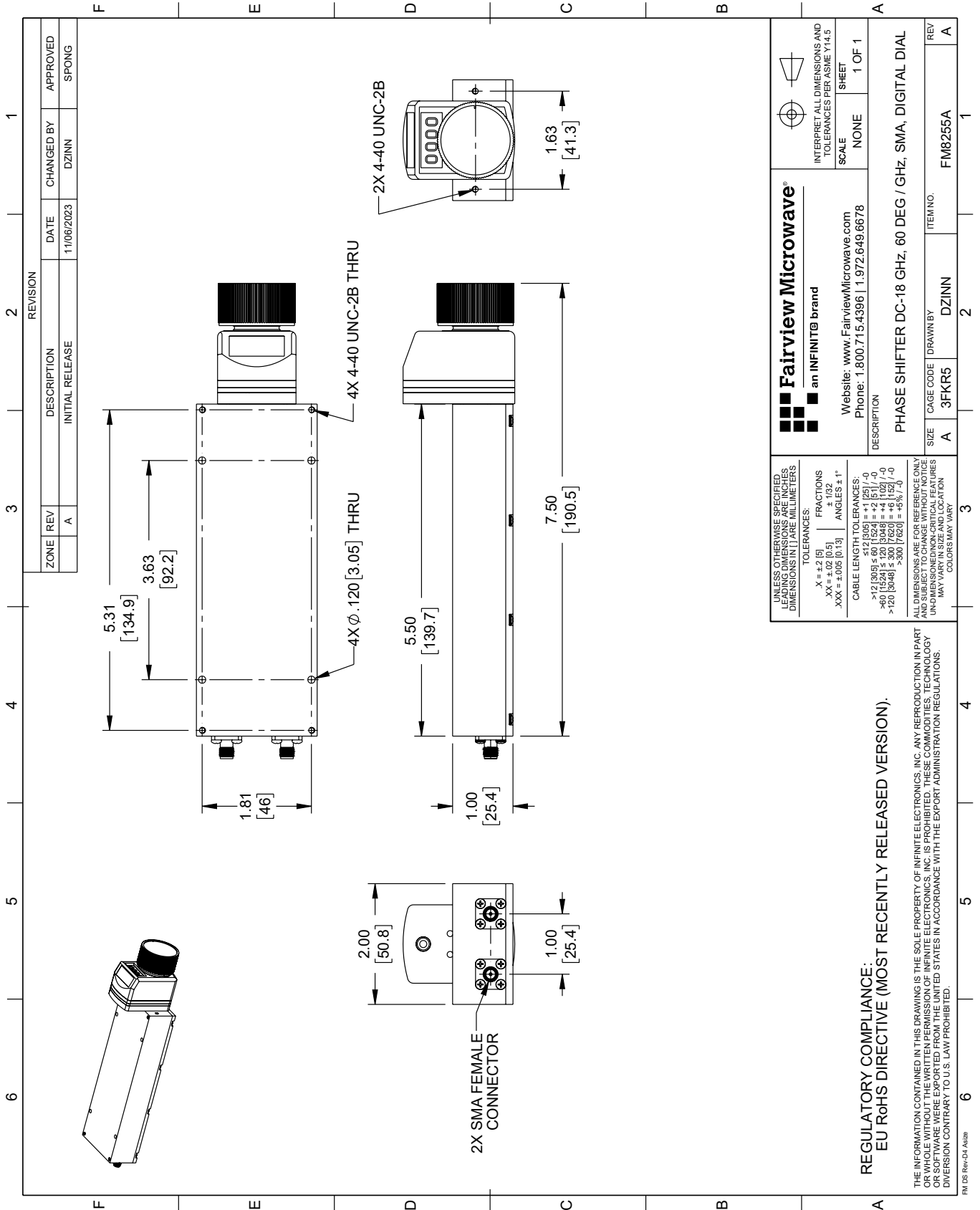
For additional information on this product, please click the following link: [SMA Variable Phase Shifter with an Adjustable Phase of 30 Deg. Per GHz Minimum, from DC - 18 GHz and Digital Dial FM8255A](#)

URL: <https://www.fairviewmicrowave.com/sma-adjustable-phase-shifter-dc-18-ghz-fm8255a-p.aspx>

The information contained within this document is accurate to the best of our knowledge and representative of the part described herein. It may be necessary to make modifications to the part and/or the documentation of the part in order to implement improvements. Fairview Microwave reserves the right to make such changes as required. Unless otherwise stated, all specifications are nominal. Fairview Microwave does not make any representation or warranty regarding the suitability of the part described herein for any particular purpose, and Fairview Microwave does not assume liability arising out of the use of any part or document.

FM8255A CAD Drawing

SMA Variable Phase Shifter with an Adjustable Phase of 30 Deg. Per GHz Minimum, from DC - 18 GHz and Digital Dial



THE INFORMATION CONTAINED IN THIS DRAWING IS THE SOLE PROPERTY OF INFINITE ELECTRONICS, INC. ANY REPRODUCTION IN PART OR WHOLE WITHOUT THE WRITTEN PERMISSION OF INFINITE ELECTRONICS, INC. IS PROHIBITED. THESE COMMODITIES, TECHNOLOGY OR SOFTWARE WERE EXPORTED FROM THE UNITED STATES IN ACCORDANCE WITH THE EXPORT ADMINISTRATION REGULATIONS. DIVISION CONTRARY TO U.S. LAW PROHIBITED.

FM DS Rev-D4 Alt26