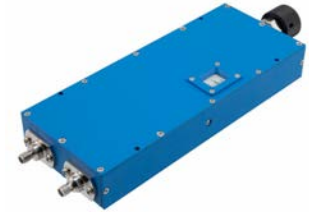


## Adjustable Phase Shifter, DC to 4GHz, With an Adjustable Phase of 90 Deg. Per GHz and SMA

Fairview Microwave FM82P5008 is a phase shifter that has phase adjustment range of 90 degrees per GHz with precision rotary dial design for controllable phase adjustment across a frequency range from 0 to 4GHz. With SMA female connectors, this RF phase shifter design is tried and true technology that offers exceptional RF performance characteristics that include 1.2 dB maximum insertion loss and a maximum VSWR of 1.4:1. Phase shifters are part of Pasternack's comprehensive RF passive product offerings which are available in stock and ready for same-day shipment.



### Electrical Specifications

Description	Min	Typ	Max	Units
Frequency Range	DC		4	GHz
Impedance		50		Ohms
Phase Shift	0		360	Degrees
Phase Adjustment	0		90	Deg/GHz
VSWR			1.4:1	
Insertion Loss			1.2	dB
Input Power, CW			100	Watts
Input Power, Peak 5µs pulse, 2% duty cycle			5	kWatts

### Features:

- Phase Tuning Range: 0 to 360 degrees
- Rotary Dial Design for Continuous Adjustment
- Frequency Range from DC to 4GHz
- SMA Female Connectorized Design
- Max VSWR 1.4:1
- Max Power Rating: 100 Watts (CW)
- Insertion Loss: 1.2 dB Max

### Applications:

- Test & Measurements
- Radar Development
- Military Communications Systems
- Phase Array Antenna System
- Satellite Communications

### Mechanical Specifications

<b>Size</b>	
Length	9.29 in [235.97 mm]
Width/Diameter	2.99 in [75.95 mm]
Height	1.2 in [30.48 mm]
Weight	1.21 lbs [548.85 g]
Body Material and Plating	Aluminum
<b>Configuration</b>	
Input Connector	SMA Female
Output Connector	SMA Female

### Environmental Specifications

<b>Temperature</b>	
Operating Range	-10 to 50 deg C
Storage Range	-40 to 70 deg C

### Compliance Certifications (see [product page](#) for current document)

### Plotted and Other Data

Notes:

Fairview Microwave  
301 Leora Ln., Suite 100  
Lewisville, TX 75056  
Tel: 1-800-715-4396 / (972) 649-6678  
Fax: (972) 649-6689  
[www.fairviewmicrowave.com](http://www.fairviewmicrowave.com)  
[sales@fairviewmicrowave.com](mailto:sales@fairviewmicrowave.com)

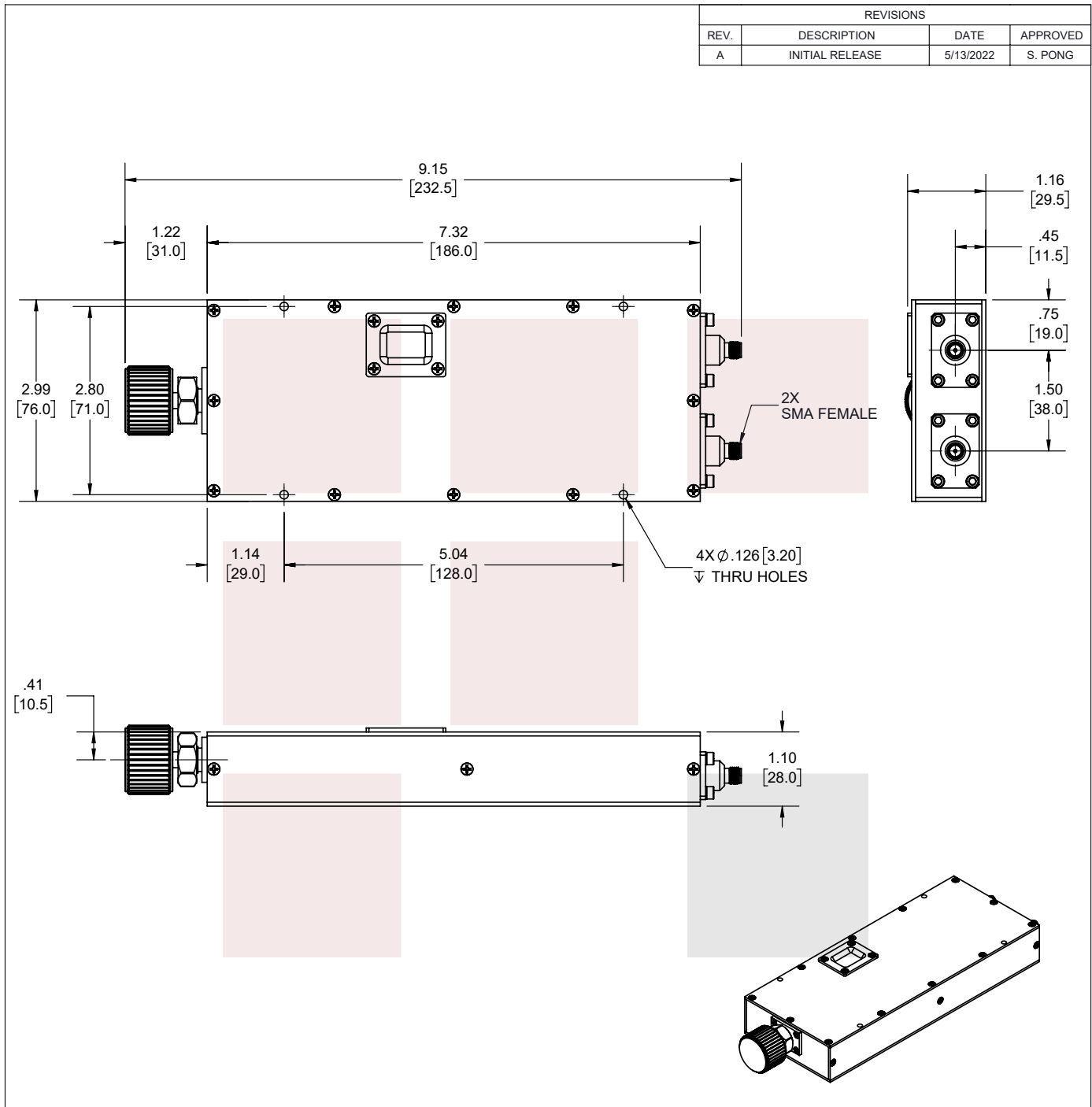
Adjustable Phase Shifter, DC to 4GHz, With an Adjustable Phase of 90 Deg. Per GHz and SMA from Fairview Microwave is in-stock and available to ship same-day. All of our RF/microwave products are available off-the-shelf from our ISO 9001:2008 certified facilities in Lewisville, Texas. Fairview Microwave is RF on-demand.

For additional information on this product, please click the following link: [Adjustable Phase Shifter, DC to 4GHz, With an Adjustable Phase of 90 Deg. Per GHz and SMA FM82P5008](#)

URL: <https://www.fairviewmicrowave.com/sma-adjustable-phase-shifter-dc-4-ghz-fm82p5008-p.aspx>

The information contained in this document is accurate to the best of our knowledge and representative of the part described herein. It may be necessary to make modifications to the part and/or the documentation of the part, in order to implement improvements. Fairview Microwave reserves the right to make such changes as required. Unless otherwise stated, all specifications are nominal. Fairview Microwave does not make any representation or warranty regarding the suitability of the part described herein for any particular purpose, and Fairview Microwave does not assume any liability arising out of the use of any part or documentation.





REVISIONS			
REV.	DESCRIPTION	DATE	APPROVED
A	INITIAL RELEASE	5/13/2022	S. PONG

THESE COMMODITIES, TECHNOLOGY OR SOFTWARE WERE EXPORTED FROM THE UNITED STATES IN ACCORDANCE WITH THE EXPORT ADMINISTRATION REGULATIONS. DIVERSION CONTRARY TO U.S. LAW PROHIBITED.

TITLE  
Adjustable Phase Shifter, DC to 4GHz, With an Adjustable Phase of 90 Deg. Per GHz and SMA

UNLESS OTHERWISE SPECIFIED LEADING DIMENSIONS ARE INCHES DIMENSIONS IN [ ] ARE MILLIMETERS		THIRD-ANGLE PROJECTION	
TOLERANCES:		CABLE LENGTH (L) TOLERANCES:	
X = ± 2 [5.08]	FRACTIONS ± 1/32	L ≤ 12 [305]	= +1 [25] / -0
.XX = ± 0.02 [51]	ANGLES ± 1°	12 [305] < L ≤ 60 [1524]	= +2 [51] / -0
.XXX = ± 0.005 [13]		60 [1524] < L ≤ 120 [3048]	= +4 [102] / -0
		120 [3048] < L ≤ 300 [7620]	= +6 [152] / -0
		300 [7620] < L	= +5%L / -0
ALL DIMENSIONS SHOWN ARE FOR REFERENCE ONLY.			
SIZE	CAGE CODE	DRAWN BY	ITEM NO.
A	3FKR5	K.DANG	FM82P5008
SHEET 1 OF 1			SCALE N/A
REV A			

T-Rev.D