

Low PIM SC Female (Jack) to N Male (Plug) Adapter



FMAD1695

Configuration

- SC Female Connector 1
- N Male Connector 2
- 50 Ohm
- Low PIM Design
- Straight Body Geometry

Features

- Typical PIM levels of -160 dBc
- Silver Plated Beryllium Copper Contact
- Max of VSWR 1.15:1 at 3GHz, Max of VSWR 1.25:1 at 7.5GHz

Applications

- Enables Between Series Connections
- General Purpose Test
- Low PIM Applications

Description

SC female to type N male adapter part number FMAD1695 from Fairview Microwave is in-stock and ships same day. This Fairview SC to type N adapter has a female to male gender configuration in a low PIM design. FMAD1695 SC female to type N male adapter operates to 7.5 GHz. The Fairview Microwave RF adapter provides a passive intermodulation of -160 dBc typical.

RF adapters can be used to enable connections between two connector types that would otherwise not mate. Certain RF adapter configurations can also be used to protect connectors on expensive equipment where the number of connect and disconnect cycles is high. An RF, microwave, or millimeter wave adapter is connected to the equipment and the commonly changed connection is made with the adapter which can be easily replaced when it wears out after high usage; such adapters are referred to as connector savers. Fairview Microwave also offers bulkhead, panel mount, hermetically sealed, reverse polarity, and isolated ground adapter varieties to serve all of your RF, microwave and millimeter wave needs.

Electrical Specifications

Description	Minimum	Typical	Maximum	Units
Frequency Range	DC		7.5	GHz
Impedance		50 Ohm		
Passive Intermodulation		-160		dBc
Dielectric Withstanding Voltage (AC)			1,500	Vrms

Mechanical Specifications

Size

Length	1.66 in [42.20 mm]
Width	0.79 in [20.00 mm]
Height	0.85 in [21.50 mm]
Weight	0.10 lbs [47.00 g]

Description	Connector 1	Connector 2
Type	SC Female	N Male
Polarity	Standard	Standard

Low PIM SC Female (Jack) to N Male (Plug) Adapter



FMAD1695

Material Specifications

Description	Connector 1		Connector 2	
	Material	Plating	Material	Plating
Type	SC Female		N Male	
Contact	Beryllium Copper	Silver	Beryllium Copper	Silver
Insulation	PTFE		PTFE	
Outer Conductor	Beryllium Copper	Silver		
Body	Brass	Tri-Metal	Brass	Tri-Metal
Coupling Nut			Brass	Tri-Metal

Environmental Specifications

Temperature

Operating Range -40 to +155 °C

Environmental Specification Notes:
IEC 61169-4/21

Compliance Certifications (see [product page](#) for current document)

Plotted and Other Data

Low PIM SC Female (Jack) to N Male (Plug) Adapter from Fairview Microwave is in-stock and available to ship same-day. All of our RF/microwave products are available off-the-shelf from our ISO 9001:2008 certified facilities in Lewisville, Texas. Fairview Microwave is RF on-demand.

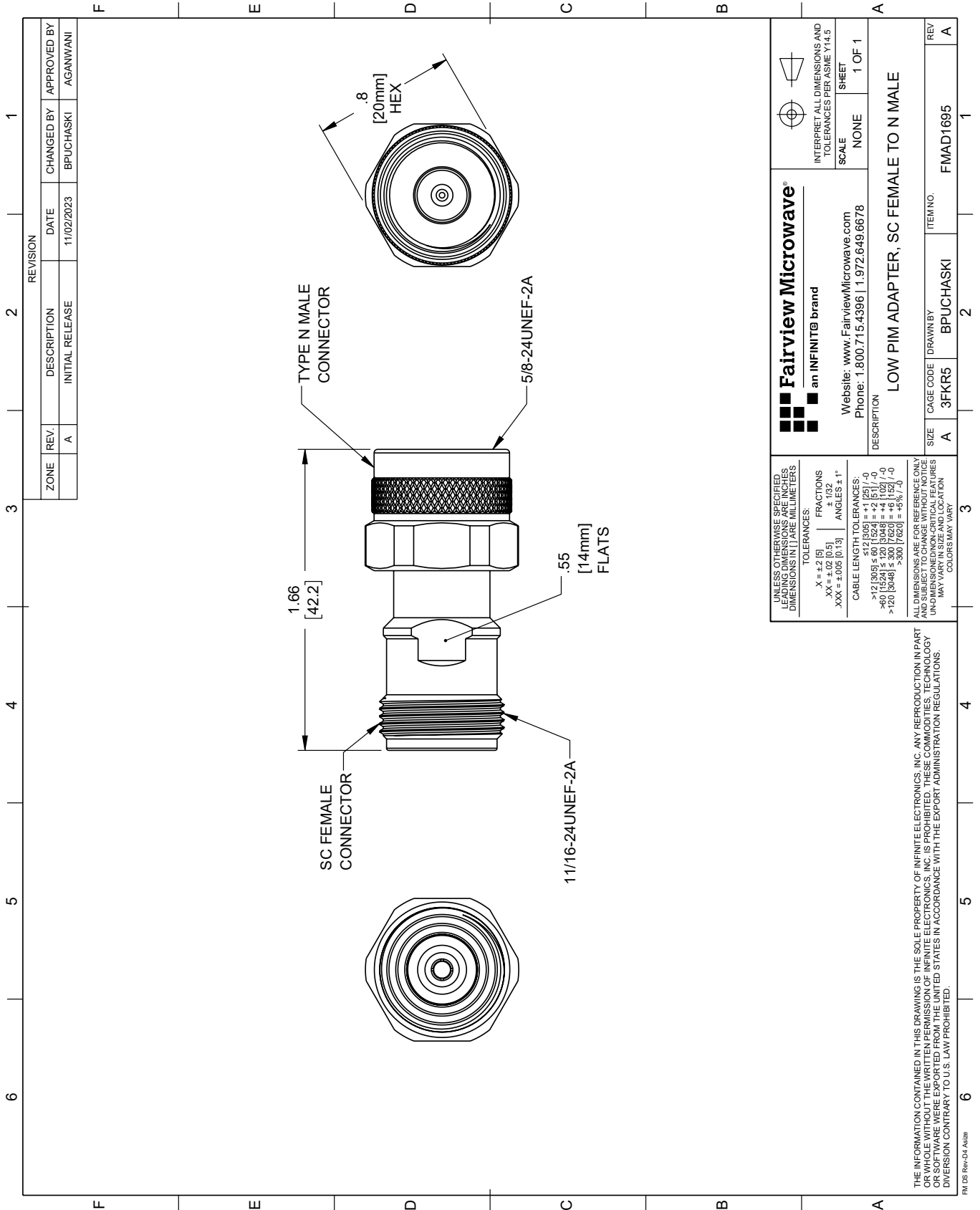
For additional information on this product, please click the following link: [Low PIM SC Female \(Jack\) to N Male \(Plug\) Adapter FMAD1695](#)

URL: <https://www.fairviewmicrowave.com/low-pim-sc-female-to-n-male-adapter-fmad1695-p.aspx>

The information contained within this document is accurate to the best of our knowledge and representative of the part described herein. It may be necessary to make modifications to the part and/or the documentation of the part in order to implement improvements. Fairview Microwave reserves the right to make such changes as required. Unless otherwise stated, all specifications are nominal. Fairview Microwave does not make any representation or warranty regarding the suitability of the part described herein for any particular purpose, and Fairview Microwave does not assume liability arising out of the use of any part or document.

FMAD1695 CAD Drawing

Low PIM SC Female (Jack) to N Male (Plug) Adapter



Fairview Microwave®
an INFINIT® brand

Website: www.FairviewMicrowave.com
Phone: 1.800.715.4396 | 1.972.649.6678

INTERPRET ALL DIMENSIONS AND TOLERANCES PER ASME Y14.5

SCALE: NONE SHEET: 1 OF 1

DESCRIPTION: **LOW PIM ADAPTER, SC FEMALE TO N MALE**

SIZE	CAGE CODE	DRAWN BY	ITEM NO.
A	3FKR5	BPUCHASKI	FMAD1695

REV: A