

Low PIM 7/16 DIN Female (Jack) to SC Male (Plug) Adapter



FMAD1696

Configuration

- 7/16 DIN Female Connector 1
- SC Male Connector 2
- 50 Ohm
- Low PIM Design
- Straight Body Geometry

Features

- Typical PIM levels of -160 dBc
- Silver Plated Bronze Contact
- Max of VSWR 1.15:1 at 3GHz, Max of VSWR 1.25:1 at 7.5GHz

Applications

- Enables Between Series Connections
- General Purpose Test
- Low PIM Applications

Description

7/16 DIN female to SC male adapter part number FMAD1696 from Fairview Microwave is in-stock and ships same day. This Fairview 7/16 DIN to SC adapter has a female to male gender configuration in a low PIM design. FMAD1696 7/16 DIN female to SC male adapter operates to 7.5 GHz. The Fairview Microwave RF adapter provides a passive intermodulation of -160 dBc typical.

RF adapters can be used to enable connections between two connector types that would otherwise not mate. Certain RF adapter configurations can also be used to protect connectors on expensive equipment where the number of connect and disconnect cycles is high. An RF, microwave, or millimeter wave adapter is connected to the equipment and the commonly changed connection is made with the adapter which can be easily replaced when it wears out after high usage; such adapters are referred to as connector savers. Fairview Microwave also offers bulkhead, panel mount, hermetically sealed, reverse polarity, and isolated ground adapter varieties to serve all of your RF, microwave and millimeter wave needs.

Electrical Specifications

Description	Minimum	Typical	Maximum	Units
Frequency Range	DC		7.5	GHz
Impedance		50 Ohm		
Passive Intermodulation		-160		dBc
Dielectric Withstanding Voltage (AC)			1,500	Vrms

Mechanical Specifications

Size

Length	1.89 in [48.00 mm]
Width	1.14 in [29.00 mm]
Height	1.14 in [29.00 mm]
Weight	0.23 lbs [103.28 g]

Description	Connector 1	Connector 2
Type	7/16 DIN Female	SC Male
Polarity	Standard	Standard

Low PIM 7/16 DIN Female (Jack) to SC Male (Plug) Adapter



FMAD1696

Material Specifications

Description	Connector 1		Connector 2	
	Material	Plating	Material	Plating
Type	7/16 DIN Female		SC Male	
Contact	Bronze	Silver	Bronze	Silver
Insulation	PTFE		PTFE	
Outer Conductor	Bronze	Silver		
Body	Brass	Tri-Metal	Brass	Tri-Metal
Coupling Nut			Brass	Tri-Metal

Environmental Specifications

Temperature

Operating Range -40 to +155 °C

Environmental Specification Notes:
IEC 61169-4/21

Compliance Certifications (see [product page](#) for current document)

Plotted and Other Data

Low PIM 7/16 DIN Female (Jack) to SC Male (Plug) Adapter from Fairview Microwave is in-stock and available to ship same-day. All of our RF/microwave products are available off-the-shelf from our ISO 9001:2008 certified facilities in Lewisville, Texas. Fairview Microwave is RF on-demand.

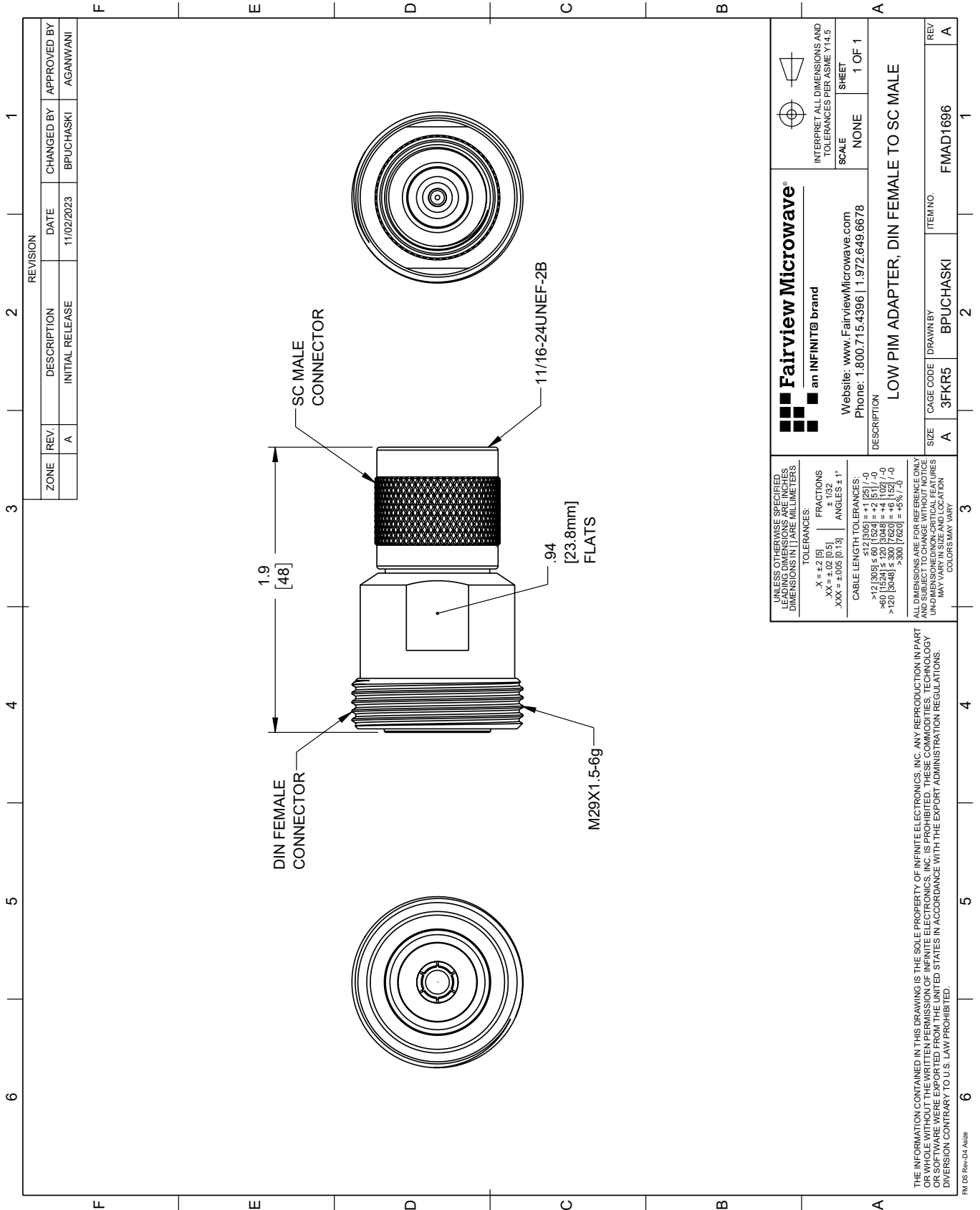
For additional information on this product, please click the following link: [Low PIM 7/16 DIN Female \(Jack\) to SC Male \(Plug\) Adapter FMAD1696](#)

URL: <https://www.fairviewmicrowave.com/low-pim-7-16-din-female-to-sc-male-adapter-fmad1696-p.aspx>

The information contained within this document is accurate to the best of our knowledge and representative of the part described herein. It may be necessary to make modifications to the part and/or the documentation of the part in order to implement improvements. Fairview Microwave reserves the right to make such changes as required. Unless otherwise stated, all specifications are nominal. Fairview Microwave does not make any representation or warranty regarding the suitability of the part described herein for any particular purpose, and Fairview Microwave does not assume liability arising out of the use of any part or document.

FMAD1696 CAD Drawing

Low PIM 7/16 DIN Female (Jack) to SC Male (Plug) Adapter



REVISION		DATE	CHANGED BY	APPROVED BY
ZONE	REV.	DESCRIPTION	INITIAL RELEASE	
	A		11/02/2023	BPUCHASKI
				AGANWANI

 Fairview Microwave [®] an INFINIT [®] brand		 INTERPRET ALL DIMENSIONS AND TOLERANCES PER ASME Y14.5
Website: www.FairviewMicrowave.com Phone: 1.800.715.4396 1.972.649.6678		SCALE: NONE SHEET: 1 OF 1
DESCRIPTION: LOW PIM ADAPTER, DIN FEMALE TO SC MALE		
SIZE: A	CAGE CODE: 3FKR5	ITEM NO.: FMAD1696
DRAWN BY: BPUCHASKI	REV: A	

UNLESS OTHERWISE SPECIFIED, LEADING DIMENSIONS ARE IN INCHES. DIMENSIONS IN [] ARE MILLIMETERS.

TOLERANCES:

.X = ±.2 [5] FRACTIONS ± 1/32
.XX = ±.02 [0.5] ANGLES ± 1°
.XXX = ±.005 [0.13]

CABLE LENGTH TOLERANCES:

<12 [305] ≤ 60 [1524] = ±.1 [25] / -0
>60 [1524] ≤ 120 [3048] = ±.4 [102] / -0
>120 [3048] ≤ 300 [7620] = ±.6 [152] / -0
>300 [7620] = ±.8 [203] / -0

ALL DIMENSIONS ARE FOR REFERENCE ONLY. UNDIMENSIONED/NON-CRITICAL FEATURES MAY VARY IN SIZE AND LOCATION. COLORS MAY VARY.

THE INFORMATION CONTAINED IN THIS DRAWING IS THE SOLE PROPERTY OF INFINITE ELECTRONICS, INC. ANY REPRODUCTION IN PART OR WHOLE WITHOUT THE WRITTEN PERMISSION OF INFINITE ELECTRONICS, INC. IS PROHIBITED. THESE COMMODITIES, TECHNOLOGY OR SOFTWARE WERE EXPORTED FROM THE UNITED STATES IN ACCORDANCE WITH THE EXPORT ADMINISTRATION REGULATIONS. DIVISION CONTRARY TO U.S. LAW PROHIBITED.

PM DS Rev-D4 Alt2b