

**31.5 dBi Active GPS/BeiDou Magnet Mount Antenna  
RHCP 1561/1575 MHz, RG174 SMA Male IPX6**

Fairview Microwave’s Active GNSS Antenna FMANGPS1014 is Right Hand Circular Polarized with an integrated Neodymium Rare Earth Magnet for a secure mount. The FMANGPS1014 is an active GPS L1 and BDS B1 band antenna with 31.5 dBi Gain. These Magnet Mount active GNSS antenna units are ideally suited for use on vehicles where low profile, low drag, non-penetrating style antennas are needed.

Our GNSS antenna specialists are ready and available to answer any questions you may have on the FMANGPS1014. This high quality SMA male antenna meets GPS L1 and BDS B1 requirements by operating in the 1559 MHz to 1577 MHz frequency range.

The FMANGPS1014 GNSS antenna series from Fairview Microwave are designed for mobile, vehicle, or fleet services to receive GNSS signals from satellite constellations to triangulate geolocations for navigation, tracking, and surveying.

**Configuration**

Design	GPS Active
Gain	31.5
Polarization	RHCP
Cable Type	RG174
Connector Type	SMA Male
Number of Ports	1

**Electrical Specifications**

Description	Min	Typ	Max	Units
Frequency Range	1,559		1,577	MHz
Input VSWR			1.5:1	
Output VSWR			2:1	
Impedance		50		Ohms
Gain		31.5		dBi
Gain Variation		±5		dBi
Out Of Band Rejection	30			dB
Operating DC Voltage	3		5	Volts
Current	6	9	12	mA

**Specifications by Frequency**

Description	Band 1	Band 2	Band 3	Band 4	Band 5	Units
Range	1.559-1.563	1.574-1.577				GHz

**Mechanical Specifications**

<b>Size</b>	
Length	1.9 in [48.26 mm]
Width	1.5 in [38.1 mm]
Height	0.6 in [15.24 mm]
Weight	0.2 lbs [90.72 g]

**Environmental Specifications**

Ingress Protection	IPX6
--------------------	------



**Features:**

- SMA Male
- Right Hand Circular Polarized
- 28 dB LNA w/ low 1.5 dB Noise Figure
- Neodymium Rare-Earth Magnet
- IPX6 Rated

**Applications:**

- GPS L1/BDS B1
- High Accuracy Global Positioning
- Precision Agriculture, Mining and Construction
- Law Enforcement and Public Safety
- Vehicle Fleet Management

Fairview Microwave  
301 Leora Ln., Suite 100  
Lewisville, TX 75056  
Tel: 1-800-715-4396 / (972) 649-6678  
Fax: (972) 649-6689  
www.fairviewmicrowave.com  
sales@fairviewmicrowave.com

**Compliance Certifications** (see [product page](#) for current document)

**Plotted and Other Data**

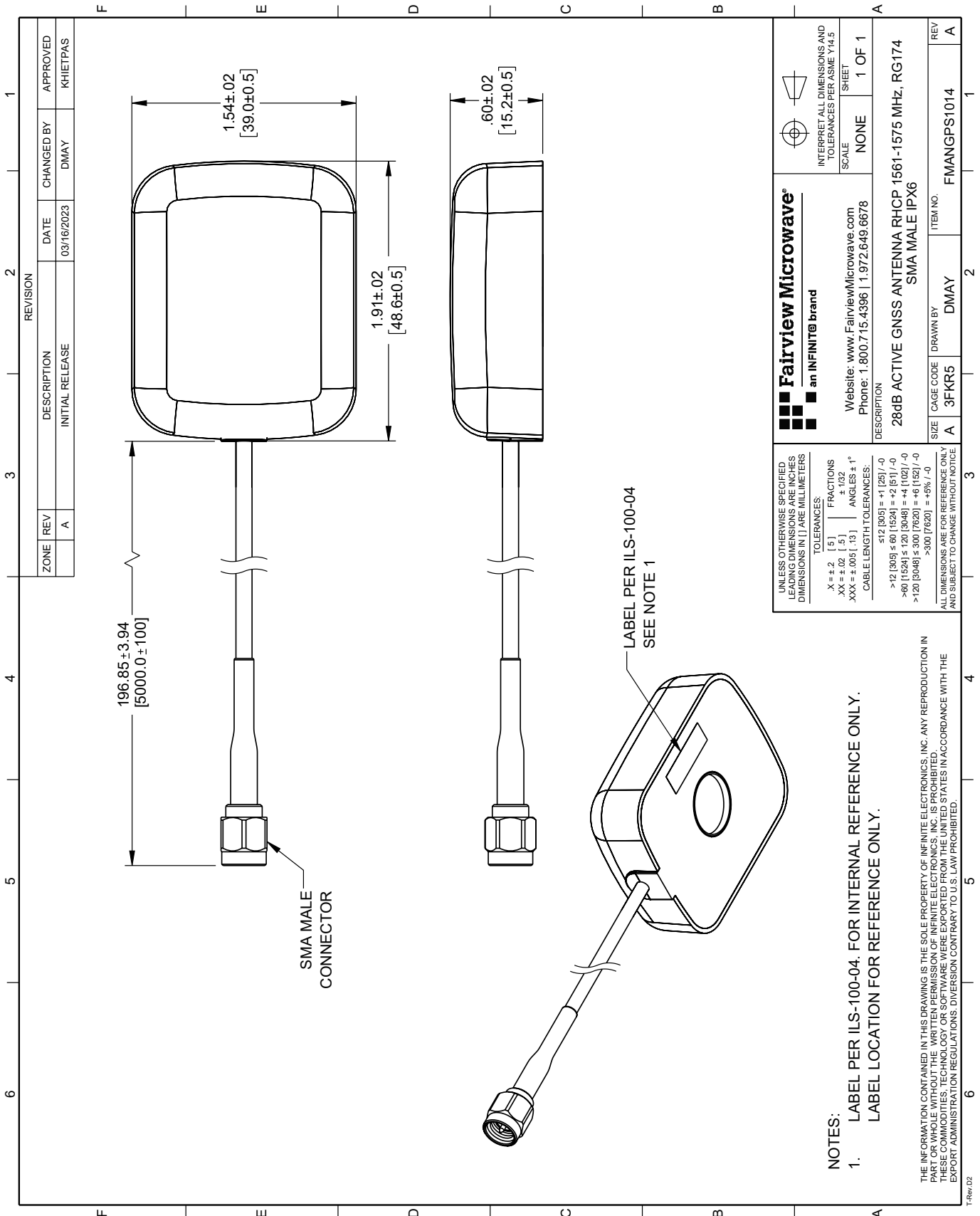
Notes:

31.5 dBi Active GPS/BeiDou Magnet Mount Antenna RHCP 1561/1575 MHz, RG174 SMA Male IPX6 from Fairview Microwave is in-stock and available to ship same-day. All of our RF/microwave products are available off-the-shelf from our ISO 9001:2008 certified facilities in Lewisville, Texas. Fairview Microwave is RF on-demand.

For additional information on this product, please click the following link: [31.5 dBi Active GPS/BeiDou Magnet Mount Antenna RHCP 1561/1575 MHz, RG174 SMA Male IPX6 FMANGPS1014](#)

URL: <https://www.fairviewmicrowave.com/gps-active-antenna-1.559-to-1.577-ghz-31.5-dbi-gain-sma-male-connector-rhcp-fmangps1014-p.aspx>

The information contained in this document is accurate to the best of our knowledge and representative of the part described herein. It may be necessary to make modifications to the part and/or the documentation of the part, in order to implement improvements. Fairview Microwave reserves the right to make such changes as required. Unless otherwise stated, all specifications are nominal. Fairview Microwave does not make any representation or warranty regarding the suitability of the part described herein for any particular purpose, and Fairview Microwave does not assume any liability arising out of the use of any part or documentation.



ZONE		REVISION		DESCRIPTION		DATE		CHANGED BY		APPROVED	
1	A			INITIAL RELEASE		03/16/2023		DMAY			KHIETPAS

<p><b>Fairview Microwave®</b> an INFINITE® brand</p> <p>Website: <a href="http://www.FairviewMicrowave.com">www.FairviewMicrowave.com</a> Phone: 1.800.715.4396   1.972.649.6678</p>		<p>INTERPRET ALL DIMENSIONS AND TOLERANCES PER ASME Y14.5</p> <p>SCALE: NONE</p> <p>SHEET: 1 OF 1</p>	
<p>DESCRIPTION: 28dB ACTIVE GNSS ANTENNA RHCP 1561-1575 MHz, RG174 SMA MALE IPX6</p>			
SIZE	CAGE CODE	DRAWN BY	ITEM NO.
A	3FKR5	DMAY	FMANGPS1014
REV			A

UNLESS OTHERWISE SPECIFIED, LEADING DIMENSIONS ARE IN INCHES DIMENSIONS IN [ ] ARE MILLIMETERS

TOLERANCES:

.X ± .2 [ .5 ] FRACTIONS  
 .XX ± .02 [ .5 ] ± .132 ANGLES ± 1°  
 .XXX ± .005 [ .13 ]

CABLE LENGTH TOLERANCES:

≤ 12 [ 305 ] = +1 [ 25 ] / -0  
 > 12 [ 305 ] ≤ 60 [ 1524 ] = +2 [ 51 ] / -0  
 > 60 [ 1524 ] ≤ 120 [ 3048 ] = +4 [ 102 ] / -0  
 > 120 [ 3048 ] ≤ 300 [ 7620 ] = +6 [ 152 ] / -0  
 > 300 [ 7620 ] = +5% / -0

ALL DIMENSIONS ARE FOR REFERENCE ONLY AND SUBJECT TO CHANGE WITHOUT NOTICE

NOTES:  
 1. LABEL PER ILS-100-04. FOR INTERNAL REFERENCE ONLY. LABEL LOCATION FOR REFERENCE ONLY.

THE INFORMATION CONTAINED IN THIS DRAWING IS THE SOLE PROPERTY OF INFINITE ELECTRONICS, INC. ANY REPRODUCTION IN PART OR WHOLE WITHOUT THE WRITTEN PERMISSION OF INFINITE ELECTRONICS, INC. IS PROHIBITED. THESE COMMODITIES, TECHNOLOGY OR SOFTWARE WERE EXPORTED FROM THE UNITED STATES IN ACCORDANCE WITH THE EXPORT ADMINISTRATION REGULATIONS. DIVERSION CONTRARY TO U.S. LAW PROHIBITED.