

2.4 GHz to 5.85 GHz Dual Band Antenna, Monopole, 90-degree angle, RPSMA Male Connector, 1.2 and 4.26 dBi Gain

Description

The Fairview Microwave FMANRBD1043 is an omni antenna operating from 2.4 GHz to 5.85 GHz with 1.2 dBi gain. Our high-quality omnidirectional antenna has a maximum input VSWR of 2.5:1, which results in the best power transfer and reduced losses. This monopole antenna transmits high power signals, increasing the signal strength, thus providing improved coverage, better broadcast control, and faster speed. Our omni antenna is specifically stocked to be available for same business day shipment.

This FMANRBD1043 WiFi antenna from Fairview Microwave is ideal for 2.4/5 GHz Wi-Fi and ISM applications, WLAN, Bluetooth, IOT, wireless audio/video systems, home automation, telemetry, remote monitoring, wireless data acquisition, 802.11 a/b/g/n/ax, wireless hotspots, PtP and PtMP applications. Our omnidirectional antenna has linear polarization, an RP-SMA male connector, and an TPEE radome material. The RP-SMA male connector on this communication antenna enables it to be used vertically, at a right angle, or at any angle in between.

Fairview Microwave WiFi antenna is 0.7 inches wide, 4.33 inches long, and 0.7 inches tall. This 1.2 dBi antenna have a sturdy design, a high power handling capacity, and IP66 ingress protection rating. The double band antenna has a gain of 2.1 dBi for the 2.4 GHz to 2.5 GHz frequency range and a gain of 5.47 dBi for the 5.15 GHz to 5.85 GHz frequency range. Our black omnidirectional antenna functions between -40 to 65 degrees C and has 50 Ohm impedance.

Fairview Microwave has one of the largest in-stock selections of monopole omni directional antennas for international and domestic orders. Make your online purchase right now to take advantage of our same business day shipping. For further information on similar antennas, our expert technical support and knowledgeable sales team can help you get the perfect 2.4 GHz to 5.85 GHz antenna for your requirements.

Configuration

Design	Rubber Duck
Gain	1.25 dBi
Polarization	Linear
Connector Type	SMA Male Reverse Polarity

Electrical Specifications

Description	Min	Typ	Max	Units
Frequency Range	2,400		5,850	MHz
Input VSWR			2.5:1	
Impedance		50		Ohms
Input Power			10	Watts

Specifications by Frequency

Description	Band 1	Band 2	Band 3	Band 4	Band 5	Units
Range	2.4-2.5	5.15-5.85				GHz
Gain	1.25	4.26				dBi



Features:

- 2400-2500 / 5150-5850 MHz, 1.2 / 4.26 dBi Gain
- 90-degree RP-SMA male connector
- Plug and play
- VSWR < 2.5:1
- Linear polarization
- Monopole antenna

Applications:

- 2.4/5 GHz Wi-Fi and ISM applications
- WLAN applications
- IOT, Wireless audio/video systems
- Home automation
- Telemetry, remote monitoring
- Wireless data acquisition
- 802.11 a/b/g/n/ax/ac, wireless hotspots
- PtP and PtMP applications
- 5G bands: n46, n53
- 4G LTE bands: B252, B255, B46

Fairview Microwave
301 Leora Ln., Suite 100
Lewisville, TX 75056
Tel: 1-800-715-4396 / (972) 649-6678
Fax: (972) 649-6689
www.fairviewmicrowave.com
sales@fairviewmicrowave.com

Mechanical Specifications

Radome Material	TPEE
Size	
Length	4.33 in [109.98 mm]
Width	0.7 in [17.78 mm]
Height	0.7 in [17.78 mm]
Weight	0.02 lbs [9.07 g]

Environmental Specifications

Temperature	
Operating Range	-40 to +65 deg C
Storage Range	-40 to +80 deg C
Environment	Waterproof
Ingress Protection	IP66

Compliance Certifications (see [product page](#) for current document)

Plotted and Other Data

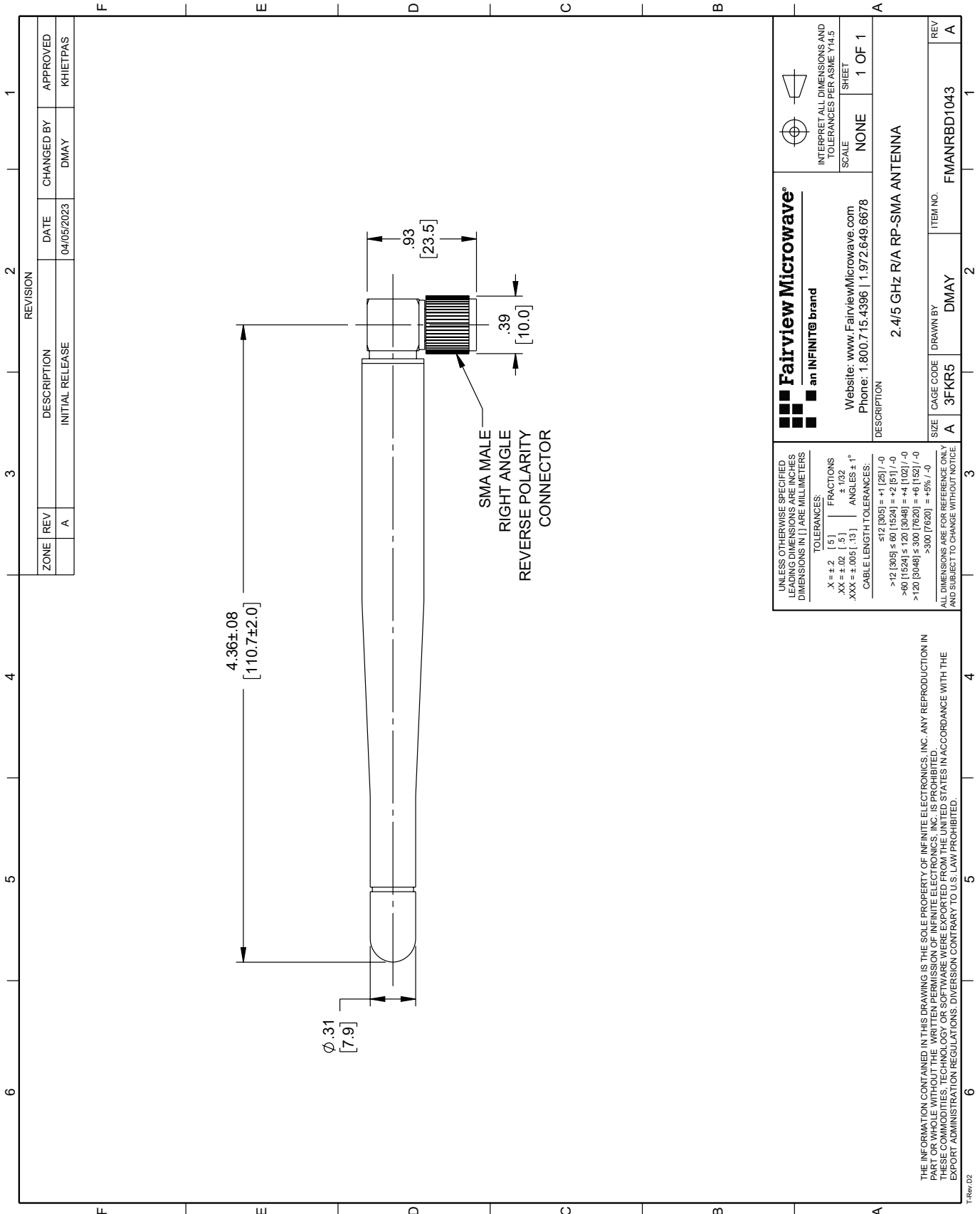
Notes:

2.4 GHz to 5.85 GHz Dual Band Antenna, Monopole, 90-degree angle, RPSMA Male Connector, 1.2 and 4.26 dBi Gain from Fairview Microwave is in-stock and available to ship same-day. All of our RF/microwave products are available off-the-shelf from our ISO 9001:2008 certified facilities in Lewisville, Texas. Fairview Microwave is RF on-demand.

For additional information on this product, please click the following link: [2.4 GHz to 5.85 GHz Dual Band Antenna, Monopole, 90-degree angle, RPSMA Male Connector, 1.2 and 4.26 dBi Gain FMANRBD1043](#)

URL:

The information contained in this document is accurate to the best of our knowledge and representative of the part described herein. It may be necessary to make modifications to the part and/or the documentation of the part, in order to implement improvements. Fairview Microwave reserves the right to make such changes as required. Unless otherwise stated, all specifications are nominal. Fairview Microwave does not make any representation or warranty regarding the suitability of the part described herein for any particular purpose, and Fairview Microwave does not assume any liability arising out of the use of any part or documentation.



ZONE		REVISION		DESCRIPTION		DATE		CHANGED BY		APPROVED	
A				INITIAL RELEASE		04/05/2023		DMAY		KHIEHPAS	

<p>Fairview Microwave an INFINIT[®] brand</p> <p>Website: www.FairviewMicrowave.com Phone: 1.800.715.4396 1.972.649.6678</p>		<p>INTERPRET ALL DIMENSIONS AND TOLERANCES PER ASME Y14.5</p> <p>SCALE: NONE</p> <p>SHEET: 1 OF 1</p>	
<p>DESCRIPTION: 2.4/5 GHz R/A RP-SMA ANTENNA</p>			
SIZE	CAGE CODE	DRAWN BY	ITEM NO.
A	3FKR5	DMAY	FMANRBD1043

UNLESS OTHERWISE SPECIFIED, LEADING DIMENSIONS ARE IN INCHES. DIMENSIONS IN [] ARE MILLIMETERS.

TOLERANCES:

.X = ±.2	[.5]	FRACTIONS
.XX = ±.02	[.5]	± 1/32
.XXX = ±.005	[.13]	ANGLES ± 1°

CABLE LENGTH TOLERANCES:

≤ 12 [305]	± .01 [253]	/ -0
> 12 [305]	± .02 [508]	/ -0
> 60 [1524]	± .04 [1016]	/ -0
> 120 [3048]	± .08 [2032]	/ -0
> 300 [7620]	± .16 [4064]	/ -0

ALL DIMENSIONS ARE FOR REFERENCE ONLY AND SUBJECT TO CHANGE WITHOUT NOTICE.

THE INFORMATION CONTAINED IN THIS DRAWING IS THE SOLE PROPERTY OF INFINITE ELECTRONICS, INC. ANY REPRODUCTION IN PART OR WHOLE WITHOUT THE WRITTEN PERMISSION OF INFINITE ELECTRONICS, INC. IS PROHIBITED. THESE COMMODITIES, TECHNOLOGY OR SOFTWARE WERE EXPORTED FROM THE UNITED STATES IN ACCORDANCE WITH THE EXPORT ADMINISTRATION REGULATIONS. DIVERSION CONTRARY TO U.S. LAW PROHIBITED.