

2.4 GHz to 2.5 GHz Swivel Antenna, Dipole, SMA Male Connector, 2 dBi Gain

Description

The Fairview Microwave FMANRBD1048 is an omni antenna operating from 2.4 GHz to 2.5 GHz with 2 dBi gain. Our high-quality swivel antenna has a maximum input VSWR of 2:1, which results in the best power transfer and reduced losses. This dipole antenna transmits high power signals, increasing the signal strength, thus providing improved coverage, better broadcast control, and faster speed. Our omni antenna is specifically stocked to be available for same business day shipment.

This FMANRBD1048 WiFi antenna from Fairview Microwave is ideal for 2.4 GHz Wi-Fi and ISM applications, WLAN, Bluetooth, IOT, wireless audio systems, home automation, telemetry, remote monitoring, wireless data acquisition, 802.11 a/b/g/n/ax, wireless hotspots. Our omnidirectional antenna has linear polarization, an SMA male connector, and an ABS radome material. The SMA male connector on this communication antenna enables it to be used vertically or at any angle in between.

Fairview Microwave WiFi antenna is 0.39 inches wide, 3.31 inches long, and 0.39 inches tall. This 2 dBi antenna have a sturdy design and a high power handling capacity. The FMANRBD1048 single-band antenna has a gain of 2 dBi for the 2.4 GHz to 2.5 GHz frequency range. Our black omnidirectional antenna functions between -40 to 65 degrees C and has 50 Ohm impedance.

Fairview Microwave has one of the largest in-stock selections of dipole omni directional antennas for international and domestic orders. Make your online purchase right now to take advantage of our same business day shipping. For further information on similar antennas, our expert technical support and knowledgeable sales team can help you get the perfect 2.4 GHz to 2.5 GHz antenna for your requirements.

Configuration

Design	Rubber Duck
Gain	2
Polarization	Linear
Connector Type	SMA Male

Electrical Specifications

Description	Min	Typ	Max	Units
Frequency Range	2,400		2,500	MHz
Input VSWR			2:1	
Impedance		50		Ohms
Gain		2		dBi
Input Power			10	Watts

Mechanical Specifications

Radome Material	ABS
Size	
Length	3.31 in [84.07 mm]
Width	0.39 in [9.91 mm]
Height	0.39 in [9.91 mm]



Features:

- 2400-2500 MHz, 2 dBi Gain
- SMA male connector
- Plug and play
- VSWR < 2:1
- Linear polarization
- Dipole antenna

Applications:

- 2.4 GHz Wi-Fi and ISM applications
- WLAN applications
- IOT, Wireless audio/video systems
- Home automation
- Telemetry, remote monitoring
- Wireless data acquisition
- 802.11 b/g/n, wireless hotspots
- PtP and PtMP applications
- 5G Band: n53

Fairview Microwave
 301 Leora Ln., Suite 100
 Lewisville, TX 75056
 Tel: 1-800-715-4396 / (972) 649-6678
 Fax: (972) 649-6689
www.fairviewmicrowave.com
sales@fairviewmicrowave.com

Weight 0.01 lbs [4.54 g]

Environmental Specifications

Temperature

Operating Range -40 to +65 deg C
Storage Range -40 to +80 deg C

Compliance Certifications (see [product page](#) for current document)

Plotted and Other Data

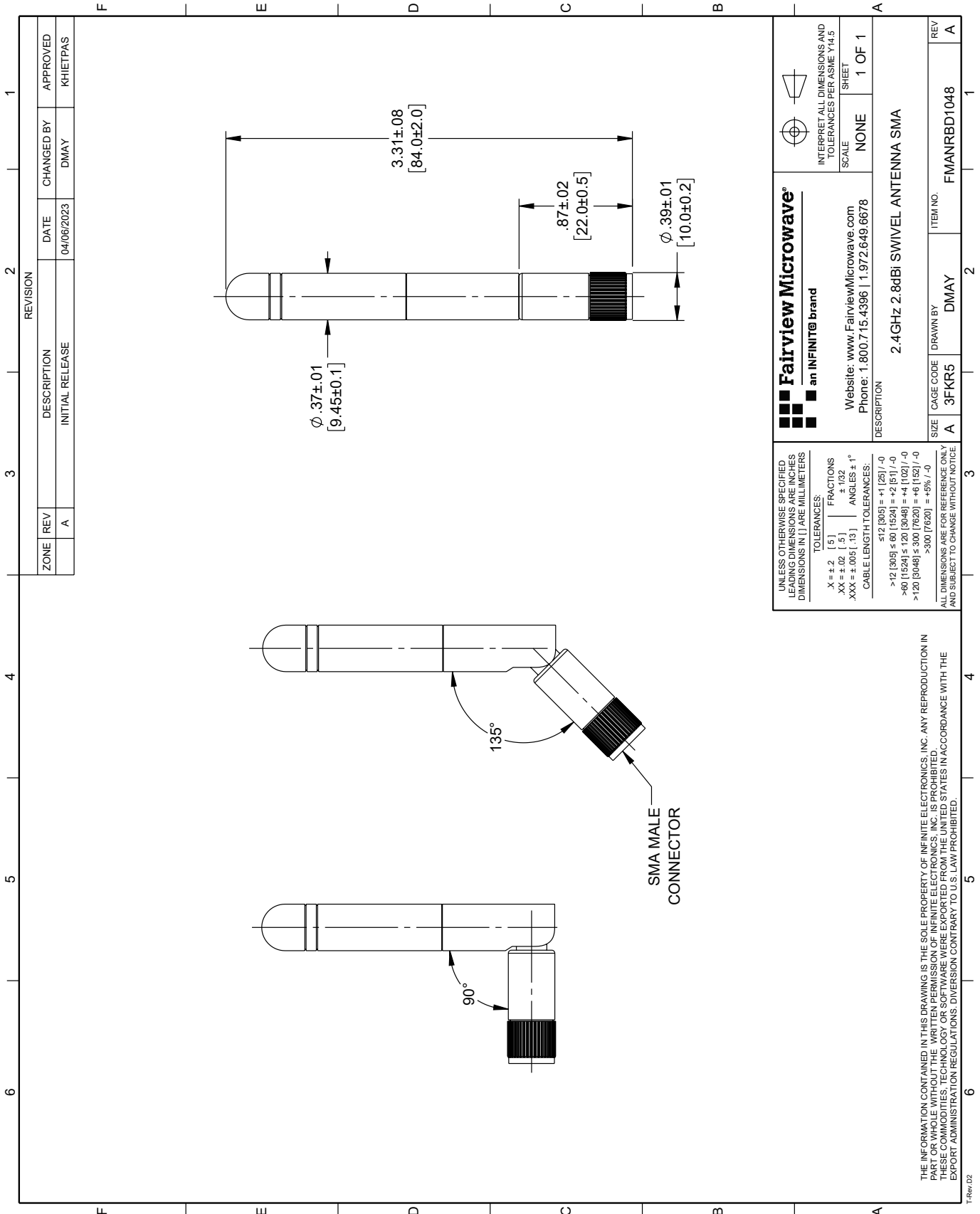
Notes:

2.4 GHz to 2.5 GHz Swivel Antenna, Dipole, SMA Male Connector, 2 dBi Gain from Fairview Microwave is in-stock and available to ship same-day. All of our RF/microwave products are available off-the-shelf from our ISO 9001:2008 certified facilities in Lewisville, Texas. Fairview Microwave is RF on-demand.

For additional information on this product, please click the following link: [2.4 GHz to 2.5 GHz Swivel Antenna, Dipole, SMA Male Connector, 2 dBi Gain FMANRBD1048](#)

URL:

The information contained in this document is accurate to the best of our knowledge and representative of the part described herein. It may be necessary to make modifications to the part and/or the documentation of the part, in order to implement improvements. Fairview Microwave reserves the right to make such changes as required. Unless otherwise stated, all specifications are nominal. Fairview Microwave does not make any representation or warranty regarding the suitability of the part described herein for any particular purpose, and Fairview Microwave does not assume any liability arising out of the use of any part or documentation.



ZONE		REVISION		DATE		APPROVED	
1	REV	DESCRIPTION	CHANGED BY	DATE	APPROVED	DATE	APPROVED
1	A	INITIAL RELEASE	DMAY	04/06/2023	KHIETPAS		

Fairview Microwave® an INFINITE® brand Website: www.FairviewMicrowave.com Phone: 1.800.715.4396 1.972.649.6678		INTERPRET ALL DIMENSIONS AND TOLERANCES PER ASME Y14.5 SCALE: NONE SHEET: 1 OF 1	
DESCRIPTION: 2.4GHZ 2.8dBI SWIVEL ANTENNA SMA			
SIZE	CAGE CODE	DRAWN BY	ITEM NO.
A	3FKR5	DMAY	FMANRBD1048

UNLESS OTHERWISE SPECIFIED, LEADING DIMENSIONS ARE INCHES DIMENSIONS IN [] ARE MILLIMETERS

TOLERANCES:

.X = ± .2	[.5]	FRACTIONS	± .132
.XX = ± .02	[.5]	ANGLES ± 1°	
.XXX = ± .005	[.13]		

CABLE LENGTH TOLERANCES:

≤ 12 [305]	± .01 [253] / -0
> 12 [305] ≤ 60 [1524]	± .02 [51] / -0
> 60 [1524] ≤ 120 [3048]	± .04 [102] / -0
> 120 [3048] ≤ 300 [7620]	± .06 [152] / -0
> 300 [7620]	± .08 [203] / -0

ALL DIMENSIONS ARE FOR REFERENCE ONLY AND SUBJECT TO CHANGE WITHOUT NOTICE

THE INFORMATION CONTAINED IN THIS DRAWING IS THE SOLE PROPERTY OF INFINITE ELECTRONICS, INC. ANY REPRODUCTION IN PART OR WHOLE WITHOUT THE WRITTEN PERMISSION OF INFINITE ELECTRONICS, INC. IS PROHIBITED. THESE COMMODITIES, TECHNOLOGY OR SOFTWARE WERE EXPORTED FROM THE UNITED STATES IN ACCORDANCE WITH THE EXPORT ADMINISTRATION REGULATIONS. DIVERSION CONTRARY TO U.S. LAW PROHIBITED.

T-Rev D2