

800 MHz to 2.7 GHz LTE Antenna, Tilt and Swivel, Monopole, SMA Male Connector, 3 dBi Gain



**FMANRBD1054**

**Features**

- 800-960 / 1710-2170 / 2400-2700 MHz, 3 dBi Gain
- SMA male connector
- Plug and play
- VSWR < 3.5:1
- Linear polarization
- Monopole antenna

**Applications**

- 4G LTE applications
- Wireless communications
- IOT sensors and trackers
- Wireless microphones
- Remote control
- Industrial monitoring and data transmission
- Amateur radio
- 2.4 GHz Wi-Fi and ISM applications
- 802.11 a/b/g/n/ax, wireless hotspots
- 5G bands: n1, n2, n3, n5, n7, n8, n18, n20, n25, n26, n34, n38, n39, n41, n53, n65, n81, n82, n84, n89, n90, n91, n92, n93, n94, n95, n98, n100, n101
- 4G LTE bands: B1, B2, B3, B4, B5, B6, B7, B8, B9, B10, B18, B19, B20, B23, B25, B26, B27, B34, B35, B36, B37, B38, B39, B41, B65, B66, B69, B70

**Description**

The Fairview Microwave FMANRBD1054 is an omni antenna operating from 800 MHz to 2.7 GHz with 3 dBi gain. Our high-quality tilt-and-swivel antenna has a maximum input VSWR of 4:1, which results in the best power transfer and reduced losses. This monopole LTE antenna transmits high power signals, increasing the signal strength, thus providing improved coverage, better broadcast control, and faster speed. Our omni antenna is specifically stocked to be available for same business day shipment.

This FMANRBD1054 antenna from Fairview Microwave is ideal for 4G LTE applications, public safety, security, construction, wireless communications, IOT applications, RFID, 2.4 GHz Wi-Fi and ISM applications, bluetooth, industrial monitoring and data transmission, remote control, and amateur radio. Our omnidirectional antenna has linear polarization and an SMA male connector. The SMA male connector on this communication antenna enables it to be used vertically or at any angle in between.

Fairview Microwave antenna is 0.37 inches wide, 2.8 inches long, and 0.37 inches tall. This 3 dBi antenna have a sturdy design and a high power handling capacity. The FMANRBD1054 single-band antenna has a gain of 3 dBi for the 800 MHz to 2.7 GHz frequency range. Our black omnidirectional antenna functions between -40 to 70 degrees C and has 50 Ohm impedance.

Fairview Microwave has one of the largest in-stock selections of monopole omni directional antennas for international and domestic orders. Make your online purchase right now to take advantage of our same business day shipping. For further information on similar antennas, our expert technical support and knowledgeable sales team can help you get the perfect 800 MHz to 2.7 GHz antenna for your requirements.

**Configuration**

Design	Rubber Duck
Band Type	Single
Radiation Pattern	Omni Directional
Polarization	Linear
Connector Type	SMA Male
Housing Material and Plating	ABS, Black

**Electrical Specifications**

Description	Minimum	Typical	Maximum	Units
Frequency Range	800		2,700	MHz
Impedance		50		Ohms
Input Power			10	Watts

800 MHz to 2.7 GHz LTE Antenna, Tilt and Swivel,  
Monopole, SMA Male Connector, 3 dBi Gain



## FMANRBD1054

### Specifications by Band

Description	Band 1	Band 2	Band 3	Band 4	Band 5	Units
Frequency	0.8 to 0.96	1.71 to 2.17	2.4 to 2.7			GHz
Gain	2.5	3.5	3			dBi
VSWR Max	2.5:1	3.5:1	3.5:1			

### Mechanical Specifications

Radome Material	ABS
Housing Material	ABS
Housing Plating/Color	Black

#### Size

Length	2.8 in [71.12 mm]
Width	0.37 in [9.4 mm]
Height	0.37 in [9.4 mm]
Weight	0.88 lbs [399.16 g]

### Environmental Specifications

#### Temperature

Operating Range	-40 to +70 deg C
Storage Range	-40 to +70 deg C
Environment	Waterproof
Ingress Protection	IP65

**Compliance Certifications** (see [product page](#) for current document)

### Plotted and Other Data

Notes:

800 MHz to 2.7 GHz LTE Antenna, Tilt and Swivel,  
Monopole, SMA Male Connector, 3 dBi Gain

## FMANRBD1054



---

### Typical Radiation Pattern

### Appendix

**Electrical Downtilt:** Angle in the antenna's elevation pattern in which the maximum gain occurs.

**Gain:** Antenna's average gain.

**Front to Back Ratio @ 180°±30°:** Average difference between the antenna's maximum gain and the maximum gain in the antenna's back lobe over ±30° angles.

**Cross-polarization Ratio (dB):** Typical difference between the co-polarization and cross-polarization gain across the sector's 3 dB Beam Width.

Dedicated to serving the needs of the Wireless Internet Service Provider (WISP) market, KP Performance Antennas offers purpose built products that reliably perform in the field. KP Performance Antennas product line consists of Yagi, Grid, Omni, Dish and other style antennas that operate in the 900 MHz, 2.4 GHz, 3 GHz, and 5 GHz frequencies.

800 MHz to 2.7 GHz LTE Antenna, Tilt and Swivel, Monopole, SMA Male Connector, 3 dBi Gain from Fairview Microwave is in-stock and available to ship same-day. All of our RF/microwave products are available off-the-shelf from our ISO 9001:2008 certified facilities in Lewisville, Texas. Fairview Microwave is RF on-demand.

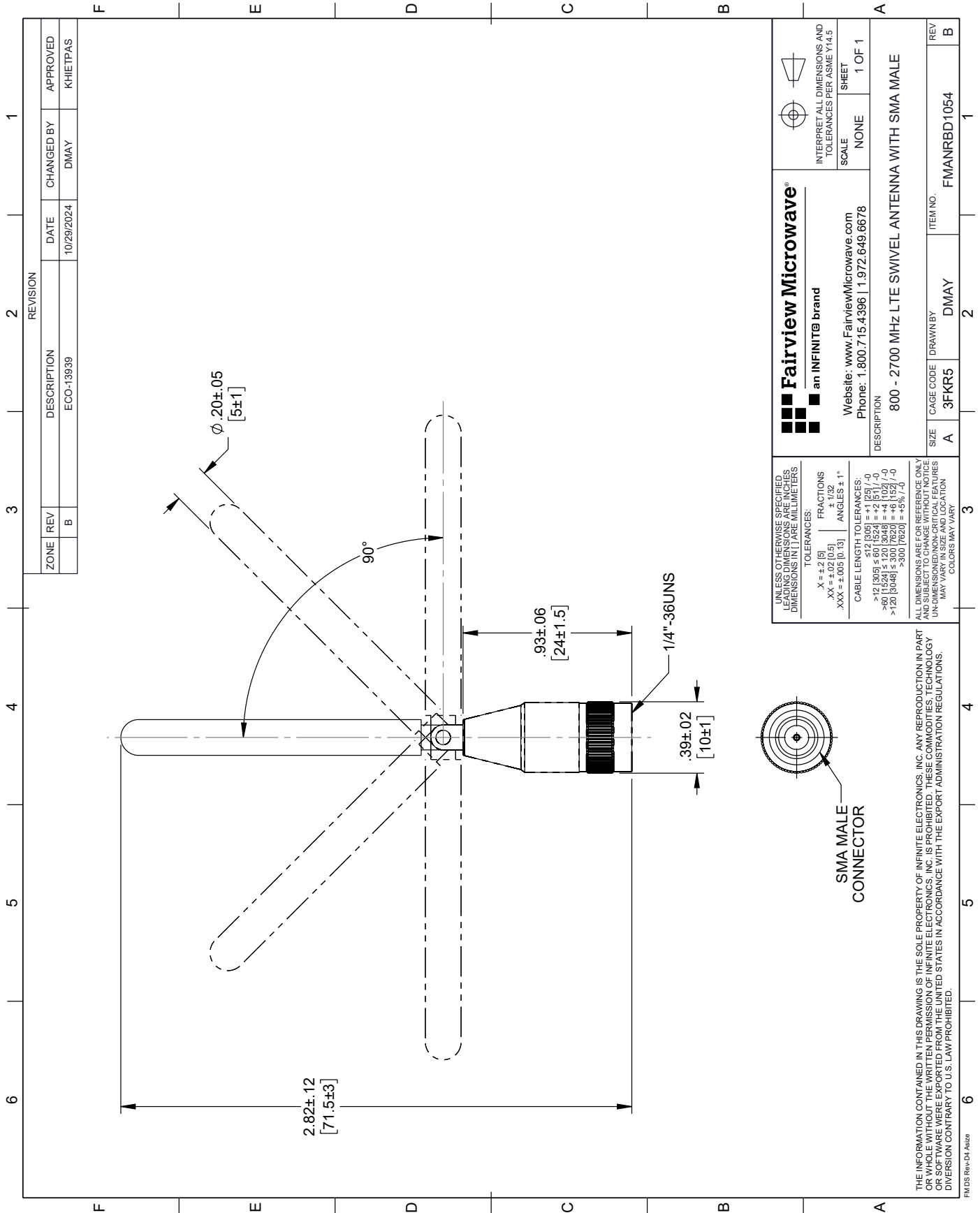
For additional information on this product, please click the following link: [800 MHz to 2.7 GHz LTE Antenna, Tilt and Swivel, Monopole, SMA Male Connector, 3 dBi Gain FMANRBD1054](#)

URL: <https://www.fairviewmicrowave.com/product/antennas/rubber-duck-antenna-800-2700-mhz-sma-connector-fman-rbd1054.html>

The information contained within this document is accurate to the best of our knowledge and representative of the part described herein. It may be necessary to make modifications to the part and/or the documentation of the part in order to implement improvements. Fairview Microwave reserves the right to make such changes as required. Unless otherwise stated, all specifications are nominal. Fairview Microwave does not make any representation or warranty regarding the suitability of the part described herein for any particular purpose, and Fairview Microwave does not assume liability arising out of the use of any part or document.

# FMANRBD1054 CAD Drawing

800 MHz to 2.7 GHz LTE Antenna, Tilt and Swivel, Monopole, SMA Male Connector, 3 dBi Gain



REVISION		DATE	CHANGED BY	APPROVED
ZONE	REV	DESCRIPTION	DATE	APPROVED
	B	ECO-13939	10/29/2024	KHIETPAS

 <b>Fairview Microwave®</b> an INFINIT® brand Website: <a href="http://www.FairviewMicrowave.com">www.FairviewMicrowave.com</a> Phone: 1.800.715.4396   1.972.649.6678		INTERPRET ALL DIMENSIONS AND TOLERANCES PER ASME Y14.5 SCALE NONE SHEET 1 OF 1
DESCRIPTION 800 - 2700 MHz LTE SWIVEL ANTENNA WITH SMA MALE		
SIZE	CAGE CODE	ITEM NO.
A	3FKR5	FMANRBD1054
REV	DRAWN BY	
B	DMAY	

UNLESS OTHERWISE SPECIFIED LEADING DIMENSIONS ARE INCHES DIMENSIONS IN PAREMILLIMETERS

TOLERANCES:  
 .X = ±.2 [5] FRACTIONS ± 1/32  
 .XX = ±.02 [0.5] ANGLES ± 1°  
 .XXX = ±.005 [0.13]

CABLE LENGTH TOLERANCES:  
 >12 [305] ≤ 60 [1524] = +1 [25] / -0  
 >60 [1524] ≤ 120 [3048] = +4 [102] / -0  
 >120 [3048] ≤ 300 [7620] = +5 [127] / -0  
 >300 [7620] = +5 [127] / -0

ALL DIMENSIONS ARE FOR REFERENCE ONLY. DIMENSIONS OF PARTS MAY VARY. DIMENSIONS ON CRITICAL FEATURES MAY VARY IN SIZE AND LOCATION. COLORS MAY VARY.

THE INFORMATION CONTAINED IN THIS DRAWING IS THE SOLE PROPERTY OF INFINITE ELECTRONICS, INC. ANY REPRODUCTION IN PART OR WHOLE WITHOUT THE WRITTEN PERMISSION OF INFINITE ELECTRONICS, INC. IS PROHIBITED. THESE COMMODITIES, TECHNOLOGY OR SOFTWARE WERE EXPORTED FROM THE UNITED STATES IN ACCORDANCE WITH THE EXPORT ADMINISTRATION REGULATIONS. DIVERSION CONTRARY TO U.S. LAW PROHIBITED.

FM DS Rev-04 A1828