

425 to 440 MHz Rubber Duck Antenna SMA Male Mount



FMANRBD1061

Features

- 425 MHz to 440 MHz
- SMA Male connector
- VSWR 2:1
- Linear polarization

Applications

- LPWAN
- ISM
- Weightless-P
- Fixed and Mobile Devices

Description

The FMANRBD1061 is a high-quality single-band rubber duck antenna with a frequency range of 425 MHz to 440 MHz. Fairview Microwave's omnidirectional rubber duck antenna is 5.91 inches tall and 0.54 inches wide.

The FMANRBD1061 rubber duck antenna from Fairview Microwave features a SMA Male connector with an input VSWR (voltage standing wave ratio) of 2:1.

Fairview Microwave's linearly polarized antenna can operate at temperatures ranging from -40 °C to 60 °C. This single-band rubber duck antenna is offered with expert technical support, PDF datasheets, and CAD drawings with dimensions and specifications.

Configuration

Design	Rubber Duck
Band Type	Single
Radiation Pattern	Omni Directional
Polarization	Linear
Connector Type	SMA Male
Number of Ports	1

Electrical Specifications

Description	Minimum	Typical	Maximum	Units
Frequency Range	425		440	MHz
Center Frequency		430		MHz
Input VSWR			2:1	
Impedance		50		Ohms

Mechanical Specifications

Radome Material	TPEE/ABS
-----------------	----------

Size

Length	6 in [152.4 mm]
Width	0.5 in [12.7 mm]
Height	0.5 in [12.7 mm]
Weight	0.2 lbs [90.72 g]

425 to 440 MHz Rubber Duck Antenna SMA Male Mount



FMANRBD1061

Environmental Specifications

Temperature

Operating Range	-40 to +65 deg C
Storage Range	-40 to +80 deg C
Ingress Protection	IP65

Compliance Certifications (see [product page](#) for current document)

Plotted and Other Data

Notes:

Typical Radiation Pattern

Appendix

Electrical Downtilt: Angle in the antenna's elevation pattern in which the maximum gain occurs.

Gain: Antenna's average gain.

Front to Back Ratio @ 180°±30°: Average difference between the antenna's maximum gain and the maximum gain in the antenna's back lobe over ±30° angles.

Cross-polarization Ratio (dB): Typical difference between the co-polarization and cross-polarization gain across the sector's 3 dB Beam Width.

Dedicated to serving the needs of the Wireless Internet Service Provider (WISP) market, KP Performance Antennas offers purpose built products that reliably perform in the field. KP Performance Antennas product line consists of Yagi, Grid, Omni, Dish and other style antennas that operate in the 900 MHz, 2.4 GHz, 3 GHz, and 5 GHz frequencies.

425 to 440 MHz Rubber Duck Antenna SMA Male Mount from Fairview Microwave is in-stock and available to ship same-day. All of our RF/microwave products are available off-the-shelf from our ISO 9001:2008 certified facilities in Lewisville, Texas. Fairview Microwave is RF on-demand.

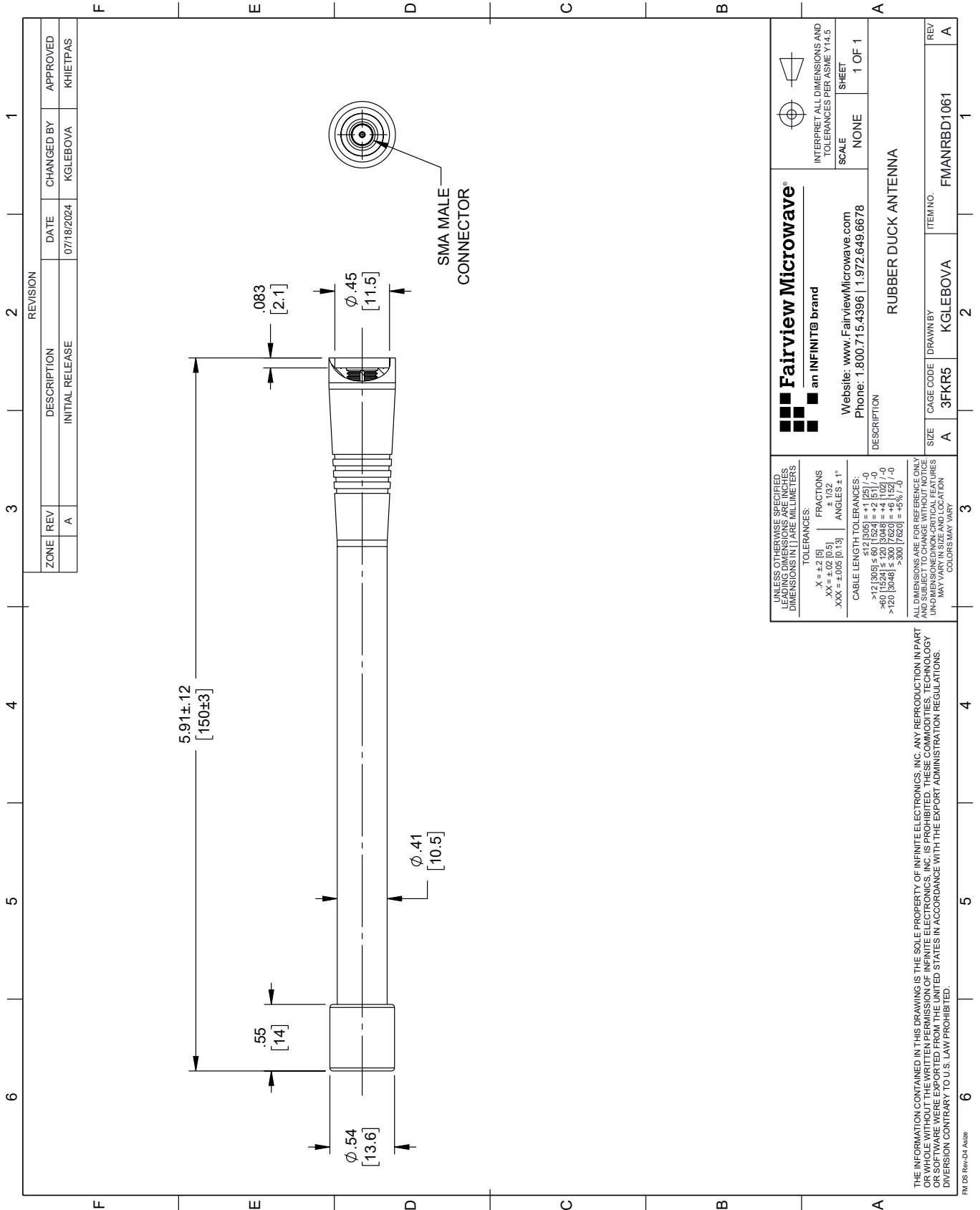
For additional information on this product, please click the following link: [425 to 440 MHz Rubber Duck Antenna SMA Male Mount FMANRBD1061](#)

URL: <https://www.fairviewmicrowave.com/425-440-mhz-rubber-duck-antenna-sma-male-mount-fmanrbd1061-p.aspx>

The information contained within this document is accurate to the best of our knowledge and representative of the part described herein. It may be necessary to make modifications to the part and/or the documentation of the part in order to implement improvements. Fairview Microwave reserves the right to make such changes as required. Unless otherwise stated, all specifications are nominal. Fairview Microwave does not make any representation or warranty regarding the suitability of the part described herein for any particular purpose, and Fairview Microwave does not assume liability arising out of the use of any part or document.

FMANRBD1061 CAD Drawing

425 to 440 MHz Rubber Duck Antenna SMA Male Mount



REVISION		DATE	CHANGED BY	APPROVED	
ZONE	REV	DESCRIPTION	DATE	CHANGED BY	APPROVED
	A	INITIAL RELEASE	07/18/2024	KGLEBOVA	KHIEPPAS

Fairview Microwave®
an INFINITI® brand

Website: www.FairviewMicrowave.com
Phone: 1.800.715.4396 | 1.972.649.6678

UNLESS OTHERWISE SPECIFIED, LEADING DIMENSIONS ARE IN INCHES. DIMENSIONS IN [] ARE MILLIMETERS.

TOLERANCES:
 .X = ±.2 [5] FRACTIONS ± 1/32
 .XX = ±.02 [0.5] ANGLES ± 1°
 .XXX = ±.005 [0.13]

CABLE LENGTH TOLERANCES:
 <12 [305] ≤ 60 [1524] = ±.1 [25] / -0
 >60 [1524] ≤ 120 [3048] = ±.4 [102] / -0
 >120 [3048] ≤ 300 [7620] = ±.8 [20] / -0

ALL DIMENSIONS ARE FOR REFERENCE ONLY. UNLESS OTHERWISE SPECIFIED, DIMENSIONS MAY VARY IN SIZE AND LOCATION. COLORS MAY VARY.

THE INFORMATION CONTAINED IN THIS DRAWING IS THE SOLE PROPERTY OF INFINITE ELECTRONICS, INC. ANY REPRODUCTION IN PART OR WHOLE WITHOUT THE WRITTEN PERMISSION OF INFINITE ELECTRONICS, INC. IS PROHIBITED. THESE COMMODITIES, TECHNOLOGY OR SOFTWARE WERE EXPORTED FROM THE UNITED STATES IN ACCORDANCE WITH THE EXPORT ADMINISTRATION REGULATIONS. DIVISION CONTRARY TO U.S. LAW PROHIBITED.

FAIRVIEW MICROWAVE
 INTERPRET ALL DIMENSIONS AND TOLERANCES PER ASME Y14.5
 SCALE NONE
 SHEET 1 OF 1

DESCRIPTION	RUBBER DUCK ANTENNA
SIZE	A
CAGE CODE	3FKR5
DRAWN BY	KGLEBOVA
ITEM NO.	FMANRBD1061
REV	A