

3 dB Fixed Attenuator SMA Male (Plug) to SMA Female (Jack)
DC to 12 GHz Rated to 2 Watts, Brass Body, 1.35:1 VSWR



FMAT7467-3

Features

- DC to 12 GHz Frequency Range
- SMA Connectorized Design
- Attenuation 3 dB \pm 1 dB
- Max Power 2 Watts (CW)
- Max VSWR of 1.35:1

Applications

- Instrumentation
- Precision Measurements
- Prototyping and Characterization
- Production Systems
- WIFI 6E
- 5G Cellular bands

Description

Fairview Microwave carries a wide range of fixed attenuators with a broad selection of attenuation levels, frequency ranges, and power dissipation ranges. RF microwave attenuators (also known as RF pads) lower the amplitude of a signal (attenuate) a known amount and can be used in a wide variety of applications. These attenuator pads are used when a signal needs to be reduced to protect measurement equipment or other circuitry, to extend the range of power meters and amplifiers, and to impedance match circuits by reducing the VSWR seen by adjacent components. RF attenuators can prevent signal overload in amplifiers, receivers and detectors, adjusting the signal level to a range that is optimal.

Few RF components are as commonly used as fixed coaxial attenuators, and Fairview Microwave carries one of the largest in-stock varieties and ships them same day. The 3 dB Fixed Attenuator FMAT7467-3 is rated to and operates from DC to 12 GHz. The versatile coaxial package uses SMA female to SMA male connectors.

Electrical Specifications

Description	Minimum	Typical	Maximum	Units
Frequency Range	DC		12	GHz
Impedance		50		Ohms
Nominal Attenuation		3		dB
VSWR			1.35:1	
Input Power, CW			2	Watts

Specifications by Frequency

Description	F1	F2	F3	F4	F5	Units
Frequency Range	DC to 2	2 to 5	5 to 10	10 to 12		GHz
VSWR, Max	1.15:1	1.25:1	1.35:1	1.35:1		
Attenuation Accuracy, Typ	0.2	0.3	0.5	1		dB

Mechanical Specifications

Size

Length	0.969 in [24.61 mm]
Width/Diameter	0.315 in [8 mm]
Height	0.315 in [8 mm]
Weight	0.02 lbs [9.07 g]
Body Material and Plating	Brass, Gold

3 dB Fixed Attenuator SMA Male (Plug) to SMA Female (Jack)
DC to 12 GHz Rated to 2 Watts, Brass Body, 1.35:1 VSWR



FMAT7467-3

Configuration

Design	Fixed, Bi-Directional
Package Style	Conectorized

Connectors

Description	Connector 1	Connector 2
Type	SMA Female	SMA Male
Contact Material and Plating	Beryllium Copper, Gold	Beryllium Copper, Gold
Dielectric Type	Teflon	Teflon
Body Material and Plating	Brass, Gold	Brass, Gold

Environmental Specifications

Temperature

Compliance Certifications (see [product page](#) for current document)

Plotted and Other Data

Notes:

Typical Performance Data

3 dB Fixed Attenuator SMA Male (Plug) to SMA Female (Jack) DC to 12 GHz Rated to 2 Watts, Brass Body, 1.35:1 VSWR from Fairview Microwave is in-stock and available to ship same-day. All of our RF/microwave products are available off-the-shelf from our ISO 9001:2008 certified facilities in Lewisville, Texas. Fairview Microwave is RF on-demand.

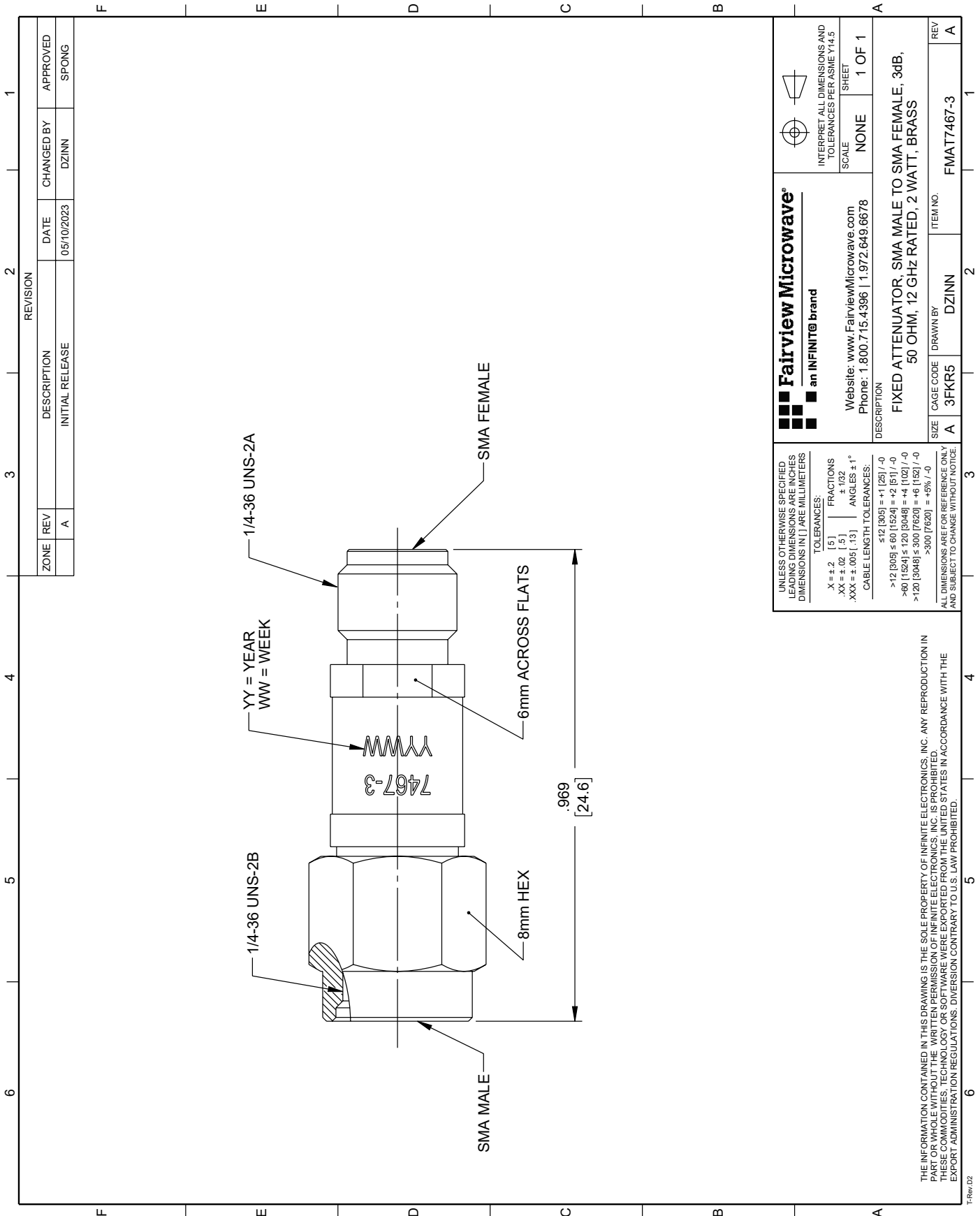
For additional information on this product, please click the following link: [3 dB Fixed Attenuator SMA Male \(Plug\) to SMA Female \(Jack\) DC to 12 GHz Rated to 2 Watts, Brass Body, 1.35:1 VSWR FMAT7467-3](#)

URL: <https://www.fairviewmicrowave.com/3db-fixed-attenuator-sma-female-sma-male-2-watts-fmat7467-3-p.aspx>

The information contained within this document is accurate to the best of our knowledge and representative of the part described herein. It may be necessary to make modifications to the part and/or the documentation of the part in order to impliment improvements. Fairview Microwave reserves the right to make such changes as required. Unless otherwise stated, all specifications are nominal. Fairview Microwave does not make any representation or warranty regarding the suitability of the part described herein for any particular purpose, and Fairview Microwave does not assume liability arising out of the use of any part or document.

FMAT7467-3 CAD Drawing

3 dB Fixed Attenuator SMA Male (Plug) to SMA Female (Jack) DC to 12 GHz Rated to 2 Watts, Brass Body, 1.35:1 VSWR



ZONE	REV	DESCRIPTION	DATE	CHANGED BY	APPROVED
	A	INITIAL RELEASE	05/10/2023	DZINN	SPONG

REVISION	DESCRIPTION	DATE	CHANGED BY	APPROVED
1	INITIAL RELEASE	05/10/2023	DZINN	SPONG

Fairview Microwave
an INFINIT® brand

Website: www.FairviewMicrowave.com
Phone: 1.800.715.4396 | 1.972.649.6678

INTERPRET ALL DIMENSIONS AND TOLERANCES PER ASME Y14.5
SCALE: NONE SHEET: 1 OF 1

UNLESS OTHERWISE SPECIFIED, ALL DIMENSIONS ARE IN INCHES. DIMENSIONS IN [] ARE MILLIMETERS.

TOLERANCES:
X ± .2 [5] FRACTIONS ± 1/32
.XX ± .02 [5] ± 1/32
.XXX ± .005 [13] ANGLES ± 1°
CABLE LENGTH TOLERANCES:
≤ 12 [305] = +1 [25] / -0
> 12 [305] ≤ 60 [1524] = +2 [51] / -0
> 60 [1524] ≤ 120 [3048] = +4 [102] / -0
> 120 [3048] ≤ 300 [7620] = +8 [152] / -0
> 300 [7620] = +8% / -0

ALL DIMENSIONS ARE FOR REFERENCE ONLY AND SUBJECT TO CHANGE WITHOUT NOTICE.

DESCRIPTION: FIXED ATTENUATOR, SMA MALE TO SMA FEMALE, 3dB, 50 OHM, 12 GHz RATED, 2 WATT, BRASS

ITEM NO. FMAT7467-3

SIZE A CAGE CODE 3FKR5 DRAWN BY DZINN