

4 dB Fixed Attenuator SMA Male (Plug) to SMA Female (Jack) DC to 12 GHz Rated to 2 Watts, Brass Body, 1.35:1 VSWR

Fairview Microwave carries a wide range of fixed attenuators with a broad selection of attenuation levels, frequency ranges, and power dissipation ranges. RF microwave attenuators (also known as RF pads) lower the amplitude of a signal (attenuate) a known amount and can be used in a wide variety of applications. These attenuator pads are used when a signal needs to be reduced to protect measurement equipment or other circuitry, to extend the range of power meters and amplifiers, and to impedance match circuits by reducing the VSWR seen by adjacent components. RF attenuators can prevent signal overload in amplifiers, receivers and detectors, adjusting the signal level to a range that is optimal.

Few RF components are as commonly used as fixed coaxial attenuators, and Fairview Microwave carries one of the largest in-stock varieties and ships them same day. The 4 dB Fixed Attenuator FMAT7467-4 is rated to and operates from DC to 12 GHz. The versatile coaxial package uses SMA female to SMA male connectors.

Electrical Specifications

| Description | Min | Typ | Max | Units |
|---------------------|-----|-----|--------|-------|
| Frequency Range | DC | | 12 | GHz |
| Impedance | | 50 | | Ohms |
| Nominal Attenuation | | 4 | | dB |
| VSWR | | | 1.35:1 | |
| Input Power, CW | | | 2 | Watts |

Specifications by Frequency

| Description | F1 | F2 | F3 | F4 | F5 | Units |
|---------------------------------|-----------|-----------|---------|----------|----|----------|
| Frequency Range | DC to 2 | 2 to 5 | 5 to 10 | 10 to 12 | | GHz |
| VSWR, Max | 1.15:1 | 1.25:1 | 1.35:1 | 1.35:1 | | |
| Attenuation Acc., Typ ± 0.2 | ± 0.3 | ± 0.5 | ± 1 | | | \pm dB |

Mechanical Specifications

Size

| | |
|---------------------------|---------------------|
| Length | 0.969 in [24.61 mm] |
| Width/Diameter | 0.315 in [8 mm] |
| Height | 0.315 in [8 mm] |
| Weight | 0.02 lbs [9.07 g] |
| Body Material and Plating | Brass, Gold |

Configuration

| | |
|---------------|-----------------------|
| Design | Fixed, Bi-Directional |
| Package Style | Conectorized |



Features:

- DC to 12 GHz Frequency Range
- SMA Connectorized Design
- Attenuation 4 dB ± 1 dB
- Max Power 2 Watts (CW)
- Max VSWR of 1.35:1

Applications:

- Instrumentation
- Precision Measurements
- Prototyping and Characterization
- Production Systems
- WIFI 6E
- 5G Cellular bands

Fairview Microwave
 301 Leora Ln., Suite 100
 Lewisville, TX 75056
 Tel: 1-800-715-4396 / (972) 649-6678
 Fax: (972) 649-6689
www.fairviewmicrowave.com
sales@fairviewmicrowave.com

Connectors

| Description | Connector 1 | Connector 2 |
|----------------------------|------------------------|------------------------|
| Type | SMA Female | SMA Male |
| Contact Material & Plating | Beryllium Copper, Gold | Beryllium Copper, Gold |
| Dielectric Type | Teflon | Teflon |
| Body Material & Plating | Brass, Gold | Brass, Gold |

Environmental Specifications

Compliance Certifications (see [product page](#) for current document)

Plotted and Other Data

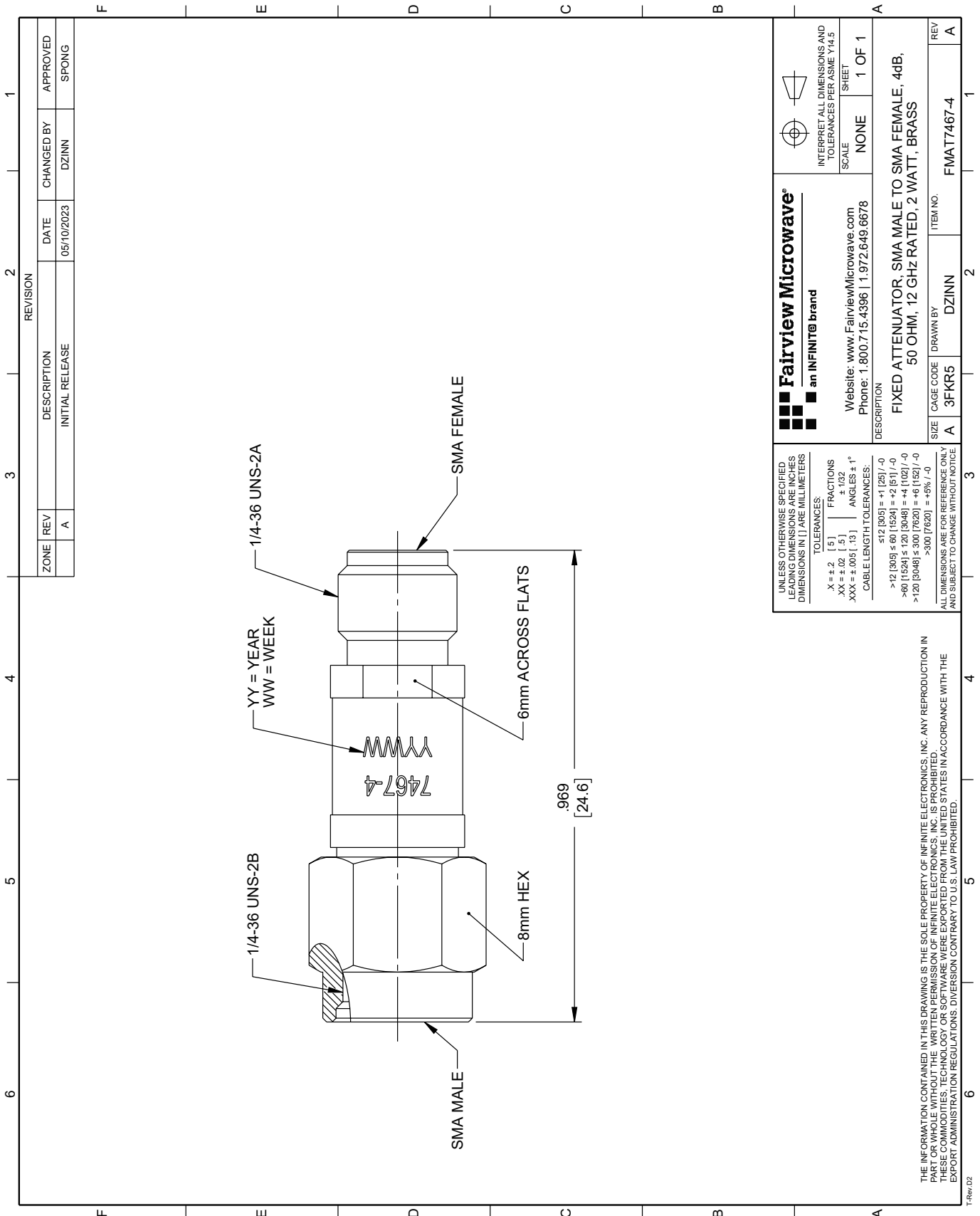
Notes:

4 dB Fixed Attenuator SMA Male (Plug) to SMA Female (Jack) DC to 12 GHz Rated to 2 Watts, Brass Body, 1.35:1 VSWR from Fairview Microwave is in-stock and available to ship same-day. All of our RF/microwave products are available off-the-shelf from our ISO 9001:2008 certified facilities in Lewisville, Texas. Fairview Microwave is RF on-demand.

For additional information on this product, please click the following link: [4 dB Fixed Attenuator SMA Male \(Plug\) to SMA Female \(Jack\) DC to 12 GHz Rated to 2 Watts, Brass Body, 1.35:1 VSWR FMAT7467-4](#)

URL: <https://www.fairviewmicrowave.com/4db-fixed-attenuator-sma-female-sma-male-2-watts-fmat7467-4-p.aspx>

The information contained in this document is accurate to the best of our knowledge and representative of the part described herein. It may be necessary to make modifications to the part and/or the documentation of the part, in order to implement improvements. Fairview Microwave reserves the right to make such changes as required. Unless otherwise stated, all specifications are nominal. Fairview Microwave does not make any representation or warranty regarding the suitability of the part described herein for any particular purpose, and Fairview Microwave does not assume any liability arising out of the use of any part or documentation.



| ZONE | | REVISION | | APPROVED | |
|------|-----------------|------------|------------|----------|-------|
| REV | DESCRIPTION | DATE | CHANGED BY | DATE | SPONG |
| A | INITIAL RELEASE | 05/10/2023 | DZINN | | |

| | | | |
|---|-----------|---|------------|
| <p>Fairview Microwave an INFINIT[®] brand</p> <p>Website: www.FairviewMicrowave.com Phone: 1.800.715.4396 1.972.649.6678</p> | | <p>INTERPRET ALL DIMENSIONS AND TOLERANCES PER ASME Y14.5</p> <p>SCALE: NONE</p> <p>SHEET: 1 OF 1</p> | |
| <p>DESCRIPTION: FIXED ATTENUATOR, SMA MALE TO SMA FEMALE, 4dB, 50 OHM, 12 GHz RATED, 2 WATT, BRASS</p> | | | |
| SIZE | CAGE CODE | DRAWN BY | ITEM NO. |
| A | 3FKR5 | DZINN | FMAT7467-4 |

UNLESS OTHERWISE SPECIFIED, LEADING DIMENSIONS ARE INCHES. DIMENSIONS IN [] ARE MILLIMETERS.

TOLERANCES:

| | | |
|--------------|-------|-------------|
| .X = ±.2 | [.5] | FRACTIONS |
| .XX = ±.02 | [.5] | ± 1/32 |
| .XXX = ±.005 | [.13] | ANGLES ± 1° |

CABLE LENGTH TOLERANCES:

| | |
|---------------------------|-------------|
| ≤ 12 [305] | ± .125 [-0] |
| > 12 [305] ≤ 60 [1524] | ± .25 [-0] |
| > 60 [1524] ≤ 120 [3048] | ± .5 [-0] |
| > 120 [3048] ≤ 300 [7620] | ± 1.0 [-0] |
| > 300 [7620] | ± 2.0 [-0] |

ALL DIMENSIONS ARE FOR REFERENCE ONLY AND SUBJECT TO CHANGE WITHOUT NOTICE.

THE INFORMATION CONTAINED IN THIS DRAWING IS THE SOLE PROPERTY OF INFINITE ELECTRONICS, INC. ANY REPRODUCTION IN PART OR WHOLE WITHOUT THE WRITTEN PERMISSION OF INFINITE ELECTRONICS, INC. IS PROHIBITED. THESE COMMODITIES, TECHNOLOGY OR SOFTWARE WERE EXPORTED FROM THE UNITED STATES IN ACCORDANCE WITH THE EXPORT ADMINISTRATION REGULATIONS. DIVERSION CONTRARY TO U.S. LAW PROHIBITED.