

3 dB Fixed Attenuator SMA Male (Plug) to SMA Female (Jack) up to 26.5 GHz Rated to 20 Watts, Black Anodized Aluminum Body, 1.35:1 VSWR



## FMAT7486-3

### Features

- DC to 26.5 GHz Range
- Attenuation 3 ±1.5 dB
- 20 Watts Average Input Power
- VSWR <1.35:1

### Applications

- Precision Measurements
- Production Systems
- Instrumentation
- Prototyping and Characterization

### Description

Fairview Microwave carries a broad selection of fixed attenuators with a wide range of attenuation levels, frequency ranges, and power dissipation ranges. Also known as RF pads, RF microwave attenuators lower the amplitude of a signal (attenuate) a known amount. These attenuators pads can be used in a wide variety of applications including reducing a signal level to protect measurement equipment or other circuitry, extending the range of power meters and amplifiers, and impedance matching circuits by reducing the VSWR seen by adjacent components. RF attenuators can prevent signal overload in amplifiers, receivers and detectors, adjusting the signal level to a range that is optimal.

Few RF components are as commonly used as fixed coaxial attenuators, and Fairview Microwave carries one of the largest in-stock varieties and ships them same day. The FMAT7486-3 is a 3 dB Fixed Attenuators that operates from DC to 26.5 GHz and is rated to 20 Watts. The versatile coaxial package uses SMA male to SMA female connectors.

### Electrical Specifications

Description	Minimum	Typical	Maximum	Units
Frequency Range	DC		26.5	GHz
Impedance		50		Ohms
Nominal Attenuation		3		dB
VSWR			1.35:1	
Input Power, CW			20	Watts
Derated linearly to 2W @ 125°C				
Input Power, Peak			500	Watts
5µs pulse, 4% duty cycle				

### Specifications by Frequency

Description	F1	F2	F3	F4	F5	Units
Frequency Range	DC to 26.5					GHz
Attenuation Accuracy, Typ	1.5					dB

### Mechanical Specifications

#### Size

Length	2.047 in [51.99 mm]
Width/Diameter	0.65 in [16.51 mm]
Weight	0.0331 lbs [15.01 g]
Body Material and Plating	Black Anodized Aluminum

3 dB Fixed Attenuator SMA Male (Plug) to SMA Female (Jack) up to 26.5 GHz Rated to 20 Watts, Black Anodized Aluminum Body, 1.35:1 VSWR



## FMAT7486-3

### Configuration

Design Fixed, Unidirectional  
Package Style Connectorized

### Connectors

Description	Connector 1	Connector 2
Type	SMA Male	SMA Female
Contact Material and Plating	Brass, Gold	Beryllium Copper, Gold
Body Material and Plating	Brass, Nickel	Brass, Nickel

### Environmental Specifications

Temperature  
Operating Range -55 to +125 deg C

**Compliance Certifications** (see [product page](#) for current document)

### Plotted and Other Data

Notes:

### Typical Performance Data

3 dB Fixed Attenuator SMA Male (Plug) to SMA Female (Jack) up to 26.5 GHz Rated to 20 Watts, Black Anodized Aluminum Body, 1.35:1 VSWR from Fairview Microwave is in-stock and available to ship same-day. All of our RF/microwave products are available off-the-shelf from our ISO 9001:2008 certified facilities in Lewisville, Texas. Fairview Microwave is RF on-demand.

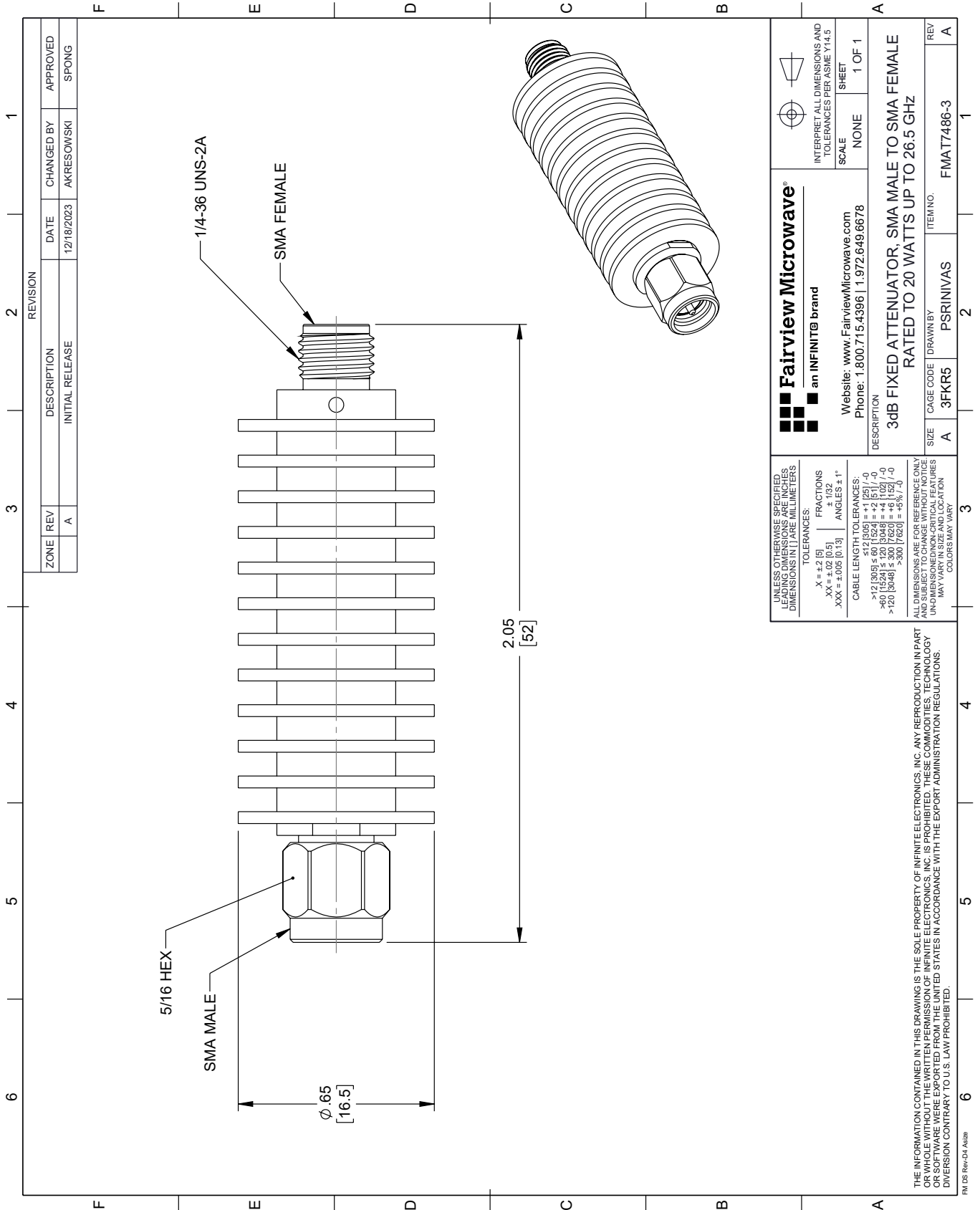
For additional information on this product, please click the following link: [3 dB Fixed Attenuator SMA Male \(Plug\) to SMA Female \(Jack\) up to 26.5 GHz Rated to 20 Watts, Black Anodized Aluminum Body, 1.35:1 VSWR FMAT7486-3](#)

URL: <https://www.fairviewmicrowave.com/3db-fixed-attenuator-sma-male-sma-female-20-watts-fmat7486-3-p.aspx>

The information contained within this document is accurate to the best of our knowledge and representative of the part described herein. It may be necessary to make modifications to the part and/or the documentation of the part in order to implement improvements. Fairview Microwave reserves the right to make such changes as required. Unless otherwise stated, all specifications are nominal. Fairview Microwave does not make any representation or warranty regarding the suitability of the part described herein for any particular purpose, and Fairview Microwave does not assume liability arising out of the use of any part or document.

# FMAT7486-3 CAD Drawing

3 dB Fixed Attenuator SMA Male (Plug) to SMA Female (Jack) up to 26.5 GHz  
 Rated to 20 Watts, Black Anodized Aluminum Body, 1.35:1 VSWR



REVISION		DATE	CHANGED BY	APPROVED
ZONE	REV	DESCRIPTION	INITIAL RELEASE	
	A			SPONG

**Fairview Microwave®**  
 an INFINIT® brand

Website: [www.FairviewMicrowave.com](http://www.FairviewMicrowave.com)  
 Phone: 1.800.715.4396 | 1.972.649.6678

INTERPRET ALL DIMENSIONS AND TOLERANCES PER ASME Y14.5  
 SCALE NONE SHEET 1 OF 1

DESCRIPTION  
**3dB FIXED ATTENUATOR, SMA MALE TO SMA FEMALE  
 RATED TO 20 WATTS UP TO 26.5 GHZ**

SIZE A CAGE CODE 3FKR5 DRAWN BY PSRINIVAS ITEM NO. FMAT7486-3 REV A

UNLESS OTHERWISE SPECIFIED, LEADING DIMENSIONS ARE IN INCHES, DIMENSIONS IN [ ] ARE MILLIMETERS

TOLERANCES:  
 .X = ±.2 [5] FRACTIONS ± 1/32  
 .XX = ±.02 [0.5] ANGLES ± 1°  
 .XXX = ±.005 [0.13]

CABLE LENGTH TOLERANCES:  
 >12 [305] ≤ 60 [1524] = ±.1 [25] / -0  
 >60 [1524] ≤ 120 [3048] = ±.4 [102] / -0  
 >120 [3048] ≤ 300 [7620] = ±.8 [20] / -0

ALL DIMENSIONS ARE FOR REFERENCE ONLY  
 UNLESS OTHERWISE SPECIFIED, DIMENSIONS ARE IN INCHES  
 DIMENSIONS IN [ ] ARE MILLIMETERS  
 UNLESS OTHERWISE SPECIFIED, LEADING DIMENSIONS ARE IN INCHES, DIMENSIONS IN [ ] ARE MILLIMETERS  
 MAY VARY IN SIZE AND LOCATION  
 COLORS MAY VARY

THE INFORMATION CONTAINED IN THIS DRAWING IS THE SOLE PROPERTY OF INFINITE ELECTRONICS, INC. ANY REPRODUCTION IN PART OR WHOLE WITHOUT THE WRITTEN PERMISSION OF INFINITE ELECTRONICS, INC. IS PROHIBITED. THESE COMMODITIES, TECHNOLOGY OR SOFTWARE ARE EXPORTED FROM THE UNITED STATES IN ACCORDANCE WITH THE EXPORT ADMINISTRATION REGULATIONS. DIVERSION CONTRARY TO U.S. LAW PROHIBITED.

FM 05 Rev-D4 Alt2