

30 dB Fixed Attenuator SMA Male (Plug) to SMA Female (Jack) up to 26.5 GHz Rated to 10 Watts, Black Anodized Aluminum Body, 1.35:1 VSWR



FMAT7489-30

Features

- DC to 26.5 GHz Range
- Attenuation 30 ±1.2 dB
- 10 Watts Average Input Power
- VSWR <1.35:1

Applications

- Precision Measurements
- Production Systems
- Instrumentation
- Prototyping and Characterization

Description

Fairview Microwave carries a broad selection of fixed attenuators with a wide range of attenuation levels, frequency ranges, and power dissipation ranges. Also known as RF pads, RF microwave attenuators lower the amplitude of a signal (attenuate) a known amount. These attenuators pads can be used in a wide variety of applications including reducing a signal level to protect measurement equipment or other circuitry, extending the range of power meters and amplifiers, and impedance matching circuits by reducing the VSWR seen by adjacent components. RF attenuators can prevent signal overload in amplifiers, receivers and detectors, adjusting the signal level to a range that is optimal.

Few RF components are as commonly used as fixed coaxial attenuators, and Fairview Microwave carries one of the largest in-stock varieties and ships them same day. The FMAT7489-30 is a 30 dB Fixed Attenuators that operates from DC to 26.5 GHz and is rated to 10 Watts. The versatile coaxial package uses SMA male to SMA female connectors.

Electrical Specifications

Description	Minimum	Typical	Maximum	Units
Frequency Range	DC		26.5	GHz
Impedance		50		Ohms
Nominal Attenuation		30		dB
VSWR			1.35:1	
Input Power, CW			10	Watts
Derated linearly to 1W @ 125°C				
Input Power, Peak			500	Watts
5µs pulse, 2% duty cycle				

Specifications by Frequency

Description	F1	F2	F3	F4	F5	Units
Frequency Range	DC to 26.5					GHz
Attenuation Accuracy, Typ	1.2					dB

Mechanical Specifications

Size

Length	1.89 in [48.01 mm]
Width/Diameter	0.65 in [16.51 mm]
Weight	0.0331 lbs [15.01 g]
Body Material and Plating	Black Anodized Aluminum

30 dB Fixed Attenuator SMA Male (Plug) to SMA Female (Jack) up to 26.5 GHz Rated to 10 Watts, Black Anodized Aluminum Body, 1.35:1 VSWR



FMAT7489-30

Configuration

Design	Fixed, Unidirectional
Package Style	Connectorized

Connectors

Description	Connector 1	Connector 2
Type	SMA Male	SMA Female
Contact Material and Plating	Brass, Gold	Beryllium Copper, Gold
Body Material and Plating	Brass, Nickel	Brass, Nickel

Environmental Specifications

Temperature	
Operating Range	-55 to +125 deg C

Compliance Certifications (see [product page](#) for current document)

Plotted and Other Data

Notes:

Typical Performance Data

30 dB Fixed Attenuator SMA Male (Plug) to SMA Female (Jack) up to 26.5 GHz Rated to 10 Watts, Black Anodized Aluminum Body, 1.35:1 VSWR from Fairview Microwave is in-stock and available to ship same-day. All of our RF/microwave products are available off-the-shelf from our ISO 9001:2008 certified facilities in Lewisville, Texas. Fairview Microwave is RF on-demand.

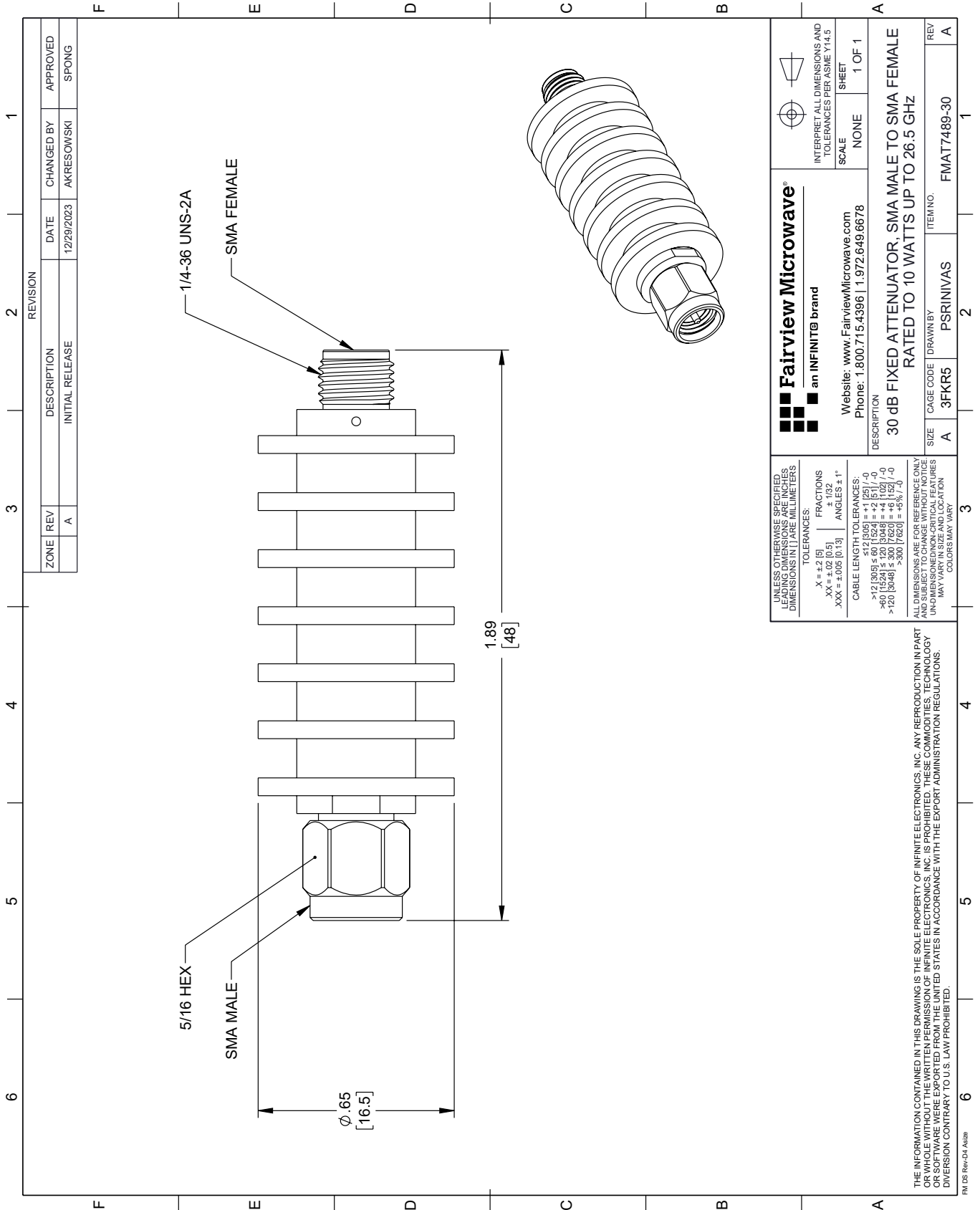
For additional information on this product, please click the following link: [30 dB Fixed Attenuator SMA Male \(Plug\) to SMA Female \(Jack\) up to 26.5 GHz Rated to 10 Watts, Black Anodized Aluminum Body, 1.35:1 VSWR FMAT7489-30](#)

URL: <https://www.fairviewmicrowave.com/30db-fixed-attenuator-sma-male-sma-female-10-watts-fmat7489-30-p.aspx>

The information contained within this document is accurate to the best of our knowledge and representative of the part described herein. It may be necessary to make modifications to the part and/or the documentation of the part in order to implement improvements. Fairview Microwave reserves the right to make such changes as required. Unless otherwise stated, all specifications are nominal. Fairview Microwave does not make any representation or warranty regarding the suitability of the part described herein for any particular purpose, and Fairview Microwave does not assume liability arising out of the use of any part or document.

FMAT7489-30 CAD Drawing

30 dB Fixed Attenuator SMA Male (Plug) to SMA Female (Jack) up to 26.5 GHz
 Rated to 10 Watts, Black Anodized Aluminum Body, 1.35:1 VSWR



REVISION		DATE	CHANGED BY	APPROVED
ZONE	REV	DESCRIPTION	INITIAL RELEASE	SPONG
A				

Fairview Microwave®
 an INFINIT® brand

Website: www.FairviewMicrowave.com
 Phone: 1.800.715.4396 | 1.972.649.6678

INTERPRET ALL DIMENSIONS AND TOLERANCES PER ASME Y14.5
 SCALE NONE SHEET 1 OF 1

UNLESS OTHERWISE SPECIFIED, LEADING DIMENSIONS ARE IN INCHES AND DIMENSIONS IN [] ARE MILLIMETERS

TOLERANCES:
 .X = ±.2 [5] FRACTIONS ±.132
 .XX = ±.02 [0.5] ANGLES ± 1°
 .XXX = ±.005 [0.13]

CABLE LENGTH TOLERANCES:
 >12 [305] ≤ 60 [1524] = ±.1 [25] / -0
 >60 [1524] ≤ 120 [3048] = ±.4 [102] / -0
 >120 [3048] ≤ 300 [7620] = ±.6 [15] / -0

ALL DIMENSIONS ARE FOR REFERENCE ONLY. UNLESS OTHERWISE SPECIFIED, DIMENSIONS ARE IN INCHES. DIMENSIONS IN [] ARE MILLIMETERS. DIMENSIONS MAY VARY IN SIZE AND LOCATION. COLORS MAY VARY.

DESCRIPTION: 30 dB FIXED ATTENUATOR, SMA MALE TO SMA FEMALE RATED TO 10 WATTS UP TO 26.5 GHZ

SIZE	CAGE CODE	DRAWN BY	ITEM NO.
A	3FKR5	PSRINIVAS	FMAT7489-30

THE INFORMATION CONTAINED IN THIS DRAWING IS THE SOLE PROPERTY OF INFINITE ELECTRONICS, INC. ANY REPRODUCTION IN PART OR WHOLE WITHOUT THE WRITTEN PERMISSION OF INFINITE ELECTRONICS, INC. IS PROHIBITED. THESE COMMODITIES, TECHNOLOGY OR SOFTWARE ARE EXPORTED FROM THE UNITED STATES IN ACCORDANCE WITH THE EXPORT ADMINISTRATION REGULATIONS. DIVISION CONTRARY TO U.S. LAW PROHIBITED.

FM DS Rev-D4 Alt26