

10 dB Fixed Attenuator 2.2-5 Male (Plug) to 2.2-5 Female (Jack) DC to 6 GHz Rated to 10 Watts, Brass Body, 1.25:1 VSWR

Fairview Microwave carries a wide range of fixed attenuators with a broad selection of attenuation levels, frequency ranges, and power dissipation ranges. RF microwave attenuators (also known as RF pads) lower the amplitude of a signal (attenuate) a known amount and can be used in a wide variety of applications. These attenuator pads are used when a signal needs to be reduced to protect measurement equipment or other circuitry, to extend the range of power meters and amplifiers, and to impedance match circuits by reducing the VSWR seen by adjacent components. RF attenuators can prevent signal overload in amplifiers, receivers and detectors, adjusting the signal level to a range that is optimal. Few RF components are as commonly used as fixed coaxial attenuators, and Fairview Microwave carries one of the largest in-stock varieties and ships them same day. The 10 dB Fixed Attenuator FMAT7493-10 is rated to 10 Watts and operates from DC to 6 GHz.



Features:

- DC to 6 GHz Frequency Range
- 2.2-5 Connectorized Design
- Attenuation 10 dB \pm 1 dB
- Max Power 10 Watts (CW)
- Max VSWR of 1.25:1

Applications:

- Instrumentation
- Precision Measurements
- Prototyping and Characterization
- Production Systems
- 5G Cellular bands

Electrical Specifications

Description	Min	Typ	Max	Units
Frequency Range	DC		6	GHz
Impedance		50		Ohms
Nominal Attenuation		10		dB
Attenuation Accuracy			\pm 1	dB
VSWR			1.25:1	
Input Power, CW			10	Watts
Input Power, Peak 8% Duty Cycle, 20us PW			100	Watts

Mechanical Specifications

Size

Length	2.36 in [59.94 mm]
Width/Diameter	0.79 in [20.07 mm]
Height	0.79 in [20.07 mm]
Weight	0.07 lbs [31.75 g]
Body Material and Plating	Brass, Copper-Tin-Zinc Alloy

Configuration

Design	Fixed, Bidirectional
Design Type	Standard
Package Style	Connectorized

Connectors

Description	Connector 1	Connector 2
Type	2.2-5 Male	2.2-5 Female
Contact Material & Plating	Beryllium Copper, Silver	Beryllium Copper, Silver
Dielectric Type	PTFE	PTFE
Body Material & Plating	Brass, Tri-Metal	Brass, Tri-Metal

Fairview Microwave
 301 Leora Ln., Suite 100
 Lewisville, TX 75056
 Tel: 1-800-715-4396 / (972) 649-6678
 Fax: (972) 649-6689
www.fairviewmicrowave.com
sales@fairviewmicrowave.com

Environmental Specifications

Temperature

Operating Range -40 to +75 deg C
Storage Range -50 to +85 deg C

Humidity <95%
Shock IEC 60068-2-27
Vibration IEC 60068-2-6-Fc
Altitude <5000m

Compliance Certifications (see [product page](#) for current document)

Plotted and Other Data

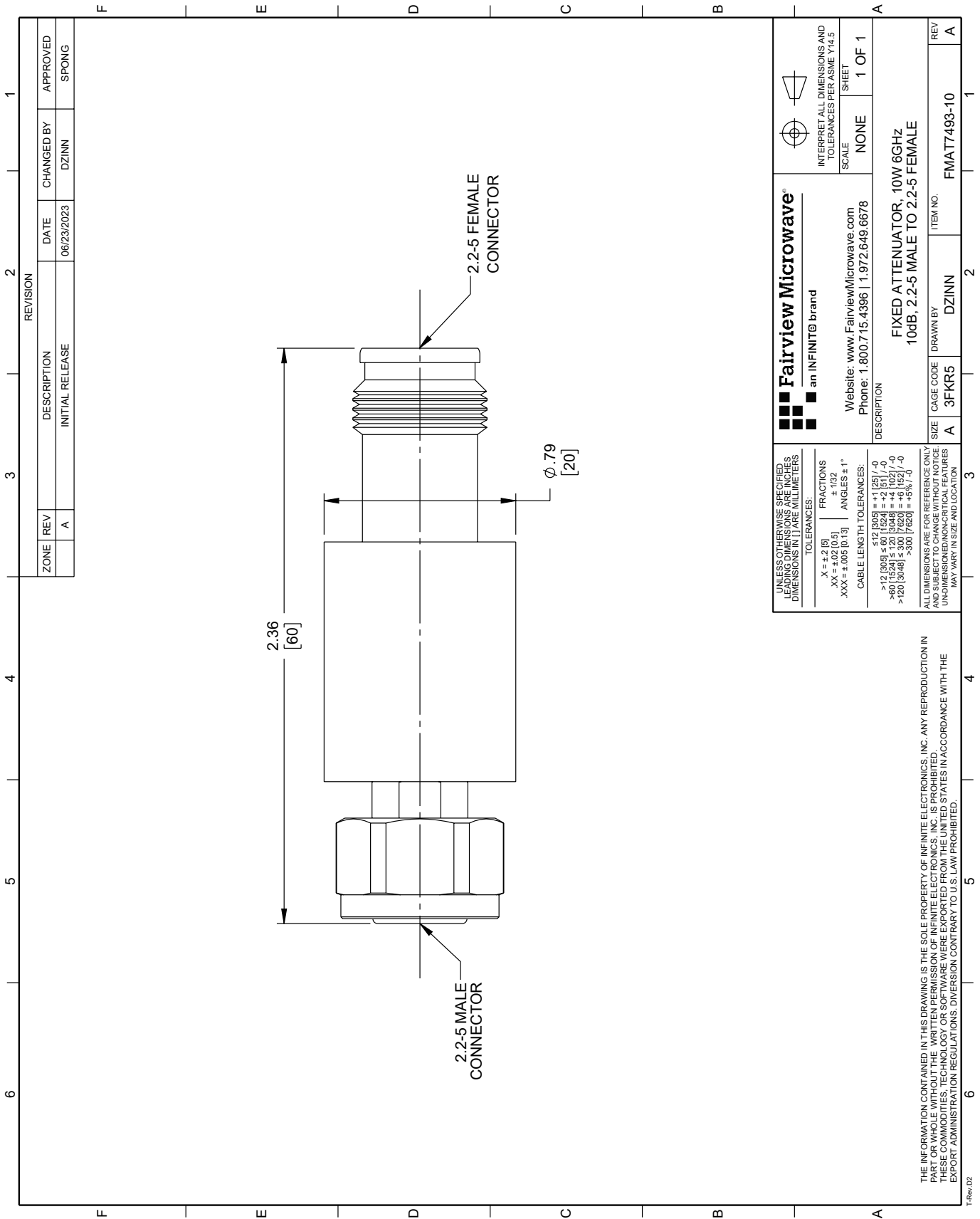
Notes:

10 dB Fixed Attenuator 2.2-5 Male (Plug) to 2.2-5 Female (Jack) DC to 6 GHz Rated to 10 Watts, Brass Body, 1.25:1 VSWR from Fairview Microwave is in-stock and available to ship same-day. All of our RF/microwave products are available off-the-shelf from our ISO 9001:2008 certified facilities in Lewisville, Texas. Fairview Microwave is RF on-demand.

For additional information on this product, please click the following link: [10 dB Fixed Attenuator 2.2-5 Male \(Plug\) to 2.2-5 Female \(Jack\) DC to 6 GHz Rated to 10 Watts, Brass Body, 1.25:1 VSWR FMAT7493-10](#)

URL: <https://www.fairviewmicrowave.com/10db-fixed-attenuator-10-watts-fmat7493-10-p.aspx>

The information contained in this document is accurate to the best of our knowledge and representative of the part described herein. It may be necessary to make modifications to the part and/or the documentation of the part, in order to implement improvements. Fairview Microwave reserves the right to make such changes as required. Unless otherwise stated, all specifications are nominal. Fairview Microwave does not make any representation or warranty regarding the suitability of the part described herein for any particular purpose, and Fairview Microwave does not assume any liability arising out of the use of any part or documentation.



ZONE		REVISION		APPROVED	
REV	DESCRIPTION	DATE	CHANGED BY		
A	INITIAL RELEASE	06/23/2023	DZINN		SPONG

<p>Fairview Microwave an INFINIT[®] brand</p> <p>Website: www.FairviewMicrowave.com Phone: 1.800.715.4396 1.972.649.6678</p>		<p>INTERPRET ALL DIMENSIONS AND TOLERANCES PER ASME Y14.5 SHEET</p> <p>SCALE: NONE</p> <p>SHEET: 1 OF 1</p>
<p>DESCRIPTION: FIXED ATTENUATOR, 10W 6GHZ 10dB, 2.2-5 MALE TO 2.2-5 FEMALE</p>		
SIZE: A	CAGE CODE: 3FKR5	ITEM NO.: FMAT7493-10
REV: A	DRAWN BY: DZINN	REV: A

UNLESS OTHERWISE SPECIFIED, LEADING DIMENSIONS ARE IN INCHES AND DIMENSIONS IN [] ARE MILLIMETERS.

TOLERANCES:

X = ±.2 [5]	FRACTIONS ± 1/32
.XX = ±.02 [0.5]	ANGLES ± 1°
.XXX = ±.005 [0.13]	

CABLE LENGTH TOLERANCES:

>12 [305] ≤ 617 [15678]	±.25 [6.35] / -0
>60 [1524] ≤ 1.20 [3048]	±.4 [10.2] / -0
>120 [3048] ≤ 3.00 [7620]	±.6 [15.2] / -0
>300 [7620]	±.85 [21.5] / -0

ALL DIMENSIONS ARE FOR REFERENCE ONLY AND SUBJECT TO CHANGE WITHOUT NOTICE. UNDIMENSIONED/NON-CRITICAL FEATURES MAY VARY IN SIZE AND LOCATION.

THE INFORMATION CONTAINED IN THIS DRAWING IS THE SOLE PROPERTY OF INFINITE ELECTRONICS, INC. ANY REPRODUCTION IN PART OR WHOLE WITHOUT THE WRITTEN PERMISSION OF INFINITE ELECTRONICS, INC. IS PROHIBITED. THESE COMMODITIES, TECHNOLOGY OR SOFTWARE WERE EXPORTED FROM THE UNITED STATES IN ACCORDANCE WITH THE EXPORT ADMINISTRATION REGULATIONS. DIVERSION CONTRARY TO U.S. LAW PROHIBITED.