

10 dB Fixed Attenuator QMA Male (Plug) to QMA Female (Jack) Up to 6 GHz Rated to 2 Watts, Brass Tri-Metal Body, 1.3:1 VSWR



FMAT7520-10

Features

- DC to 6 GHz Range
- QMA Connectorized Design
- Attenuation 10 ±0.5 dB
- Max Power 2 Watts (CW)
- VSWR 1.3:1

Applications

- Instrumentation
- Precision Measurements
- Prototyping and Characterization
- Production Systems
- 5G Cellular Bands
- DAS Systems

Description

Fairview Microwave carries a wide range of fixed attenuators with a broad selection of attenuation levels, frequency ranges, and power dissipation ranges. RF microwave attenuators (also known as RF pads) lower the amplitude of a signal (attenuate) a known amount and can be used in a wide variety of applications. These attenuators pads are used when a signal needs to be reduced to protect measurement equipment or other circuitry, to extend the range of power meters and amplifiers, and to impedance match circuits by reducing the VSWR seen by adjacent components. RF attenuators can prevent signal overload in amplifiers, receivers and detectors, adjusting the signal level to a range that is optimal.

Few RF components are as commonly used as fixed coaxial attenuators, and Fairview Microwave carries one of the largest in-stock varieties and ships them same day. The 10 dB Fixed Attenuator FMAT7520-10 is rated to 2 Watts and operates from DC to 6 GHz. The versatile coaxial package uses QMA male to QMA female connectors.

Electrical Specifications

Description	Minimum	Typical	Maximum	Units
Frequency Range	DC		6	GHz
Impedance		50		Ohms
Nominal Attenuation		10		dB
Attenuation Accuracy		0.5		dB
VSWR			1.3:1	
Input Power, CW			2	Watts

Mechanical Specifications

Size

- Length 1.248 in [31.7 mm]
- Width/Diameter 0.413 in [10.49 mm]
- Weight 0.02 lbs [9.07 g]
- Body Material and Plating Brass, Tri-Metal

Configuration

- Design Fixed, Bidirectional
- Design Type Standard
- Package Style Connectorized

10 dB Fixed Attenuator QMA Male (Plug) to QMA Female (Jack) Up to 6 GHz Rated to 2 Watts, Brass Tri-Metal Body, 1.3:1 VSWR



FMAT7520-10

Connectors

Description	Connector 1	Connector 2
Type	QMA Male	QMA Female
Contact Material and Plating	Beryllium Copper, Gold	Beryllium Copper, Gold
Dielectric Type	PTFE	PTFE
Body Material and Plating	Brass, Tri-Metal	Brass, Tri-Metal

Environmental Specifications

Temperature

Compliance Certifications (see [product page](#) for current document)

Plotted and Other Data

Notes:

Typical Performance Data

10 dB Fixed Attenuator QMA Male (Plug) to QMA Female (Jack) Up to 6 GHz Rated to 2 Watts, Brass Tri-Metal Body, 1.3:1 VSWR from Fairview Microwave is in-stock and available to ship same-day. All of our RF/microwave products are available off-the-shelf from our ISO 9001:2008 certified facilities in Lewisville, Texas. Fairview Microwave is RF on-demand.

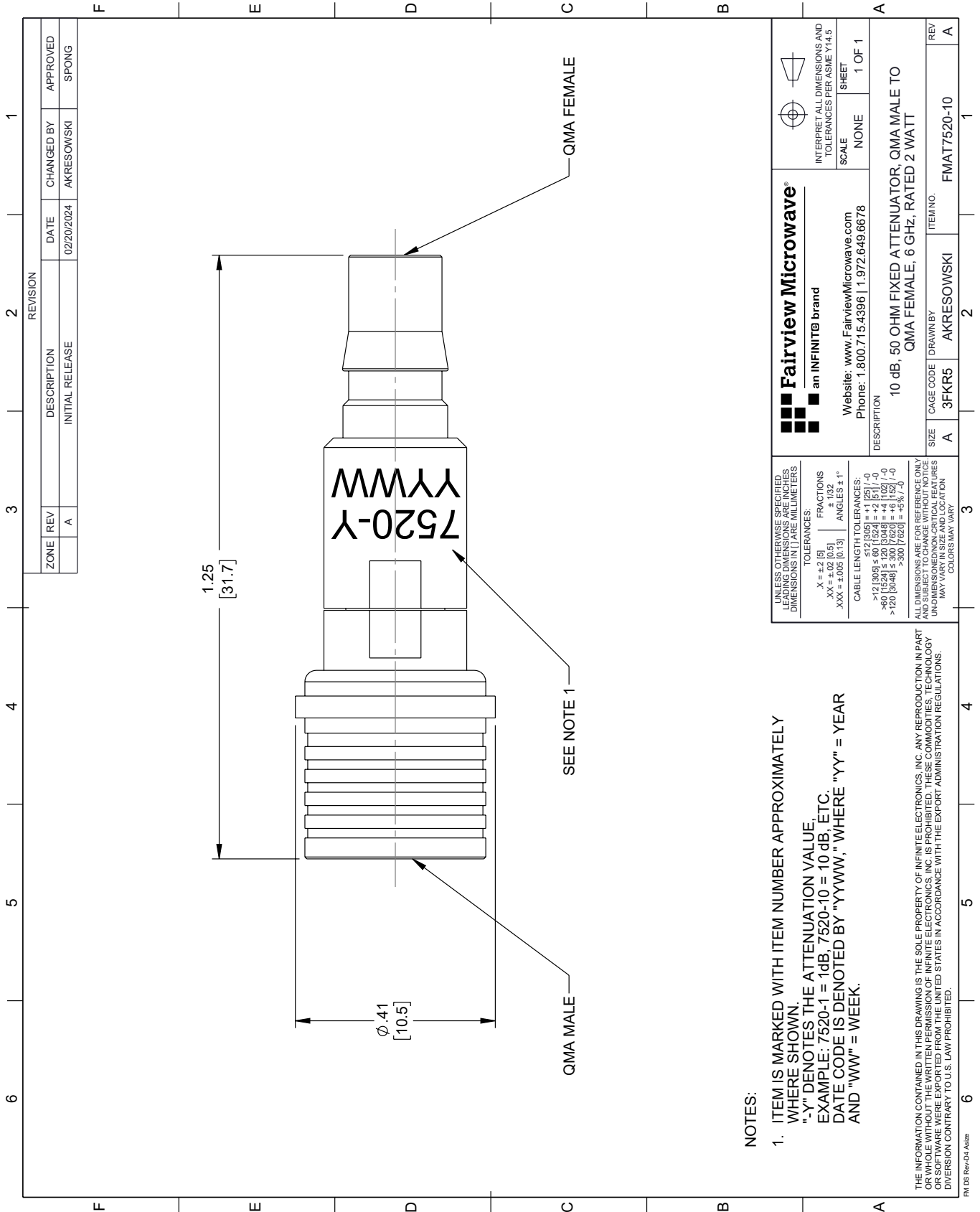
For additional information on this product, please click the following link: [10 dB Fixed Attenuator QMA Male \(Plug\) to QMA Female \(Jack\) Up to 6 GHz Rated to 2 Watts, Brass Tri-Metal Body, 1.3:1 VSWR FMAT7520-10](#)

URL: <https://www.fairviewmicrowave.com/10db-fixed-attenuator-qma-male-qma-female-2-watts-fmat7520-10-p.aspx>

The information contained within this document is accurate to the best of our knowledge and representative of the part described herein. It may be necessary to make modifications to the part and/or the documentation of the part in order to implement improvements. Fairview Microwave reserves the right to make such changes as required. Unless otherwise stated, all specifications are nominal. Fairview Microwave does not make any representation or warranty regarding the suitability of the part described herein for any particular purpose, and Fairview Microwave does not assume liability arising out of the use of any part or document.

FMAT7520-10 CAD Drawing

10 dB Fixed Attenuator QMA Male (Plug) to QMA Female (Jack) Up to 6 GHz Rated to 2 Watts, Brass Tri-Metal Body, 1.3:1 VSWR



NOTES:

- ITEM IS MARKED WITH ITEM NUMBER APPROXIMATELY WHERE SHOWN.
 "-Y" DENOTES THE ATTENUATION VALUE
 EXAMPLE: 7520-1 = 1dB, 7520-10 = 10 dB, ETC.
 DATE CODE IS DENOTED BY "YYWW", WHERE "YY" = YEAR
 AND "WW" = WEEK.

THE INFORMATION CONTAINED IN THIS DRAWING IS THE SOLE PROPERTY OF INFINITE ELECTRONICS, INC. ANY REPRODUCTION IN PART OR WHOLE WITHOUT THE WRITTEN PERMISSION OF INFINITE ELECTRONICS, INC. IS PROHIBITED. THESE COMMODITIES, TECHNOLOGY OR SOFTWARE WERE EXPORTED FROM THE UNITED STATES IN ACCORDANCE WITH THE EXPORT ADMINISTRATION REGULATIONS. DIVISION CONTRARY TO U.S. LAW PROHIBITED.

FM 05 Rev-D4 Alt2b

<p>Fairview Microwave® an INFINIT® brand</p> <p>Website: www.FairviewMicrowave.com Phone: 1.800.715.4396 1.972.649.6678</p>		<p>INTERPRET ALL DIMENSIONS AND TOLERANCES PER ASME Y14.5</p> <p>SCALE: NONE SHEET: 1 OF 1</p>		
<p>UNLESS OTHERWISE SPECIFIED, LEADING DIMENSIONS ARE IN INCHES. DIMENSIONS IN [] ARE MILLIMETERS.</p> <p>TOLERANCES: X = ±.2 [5] FRACTIONS ±.132 .XX = ±.02 [0.5] ANGLES ± 1° .XXX = ±.005 [0.13]</p> <p>CABLE LENGTH TOLERANCES: <12 [305] ≤ 60 [1524] = ±.1 [25] / -0 >60 [1524] ≤ 120 [3048] = ±.4 [102] / -0 >120 [3048] ≤ 300 [7620] = ±.6 [15] / -0</p> <p>ALL DIMENSIONS ARE FOR REFERENCE ONLY. UNDIMENSIONED NON-CRITICAL FEATURES MAY VARY IN SIZE AND LOCATION. COLORS MAY VARY.</p>		<p>DESCRIPTION: 10 dB, 50 OHM FIXED ATTENUATOR, QMA MALE TO QMA FEMALE, 6 GHz, RATED 2 WATT</p> <p>ITEM NO. FMAT7520-10</p>		
<p>ZONE REV A</p>	<p>DESCRIPTION INITIAL RELEASE</p>	<p>DATE 02/20/2024</p>	<p>CHANGED BY AKRESOWSKI</p>	<p>APPROVED SPONG</p>
<p>REVISION</p>	<p>1</p>	<p>2</p>	<p>3</p>	<p>4</p>
<p>5</p>	<p>6</p>	<p>1</p>	<p>2</p>	<p>3</p>
<p>4</p>	<p>3</p>	<p>2</p>	<p>1</p>	<p>A</p>
<p>3</p>	<p>2</p>	<p>1</p>	<p>A</p>	<p>REV</p>
<p>2</p>	<p>1</p>	<p>A</p>	<p>FMAT7520-10</p>	<p>ITEM NO.</p>
<p>1</p>	<p>A</p>	<p>3FKR5</p>	<p>AKRESOWSKI</p>	<p>DRAWN BY</p>
<p>A</p>	<p>3</p>	<p>2</p>	<p>1</p>	<p>REV</p>