

RA SMC Plug to RA SMC Plug Cable RG-188 Coax

FMCA100068

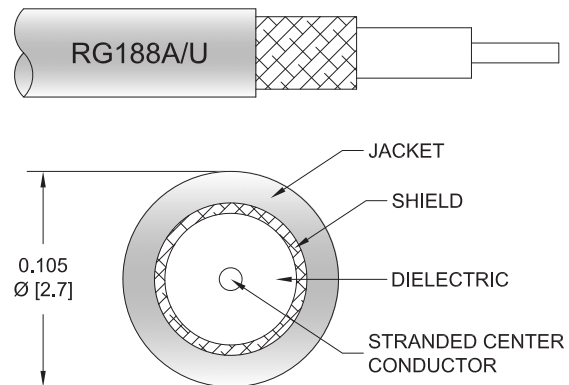


Configuration

- Connector 1: SMC Plug Right Angle
- Connector 2: SMC Plug Right Angle
- Cable Type: RG-188
- Coax Flex Type: Flexible

Features

- Max Frequency 3 GHz
- PTFE Jacket



Applications

- General Purpose
- Laboratory Use

Description

The RA SMC plug to RA SMC plug cable using RG188 coax, part number FMCA100068, from Fairview Microwave is in-stock and ships same day. This Fairview SMC to SMC cable assembly has a plug to plug gender configuration with 50 ohm flexible RG-188 coax. Fairview Microwave's flexible RF cable assemblies are ideal for applications where tight bends and continual flexure are required. The FMCA100068 SMC plug to SMC plug cable assembly operates to 3 GHz. The right angle SMC interfaces on the RG-188 cable allow for easier connections in tight spaces.

Custom versions of most RF cable assemblies can be built and shipped same day. Custom cable assembly lengths can be obtained by specifying the desired length on the web site at time of order or by contacting a sales representative. Other RF cable assembly value added services including connector orientation or clocking, heat shrink booting and labeling are also available. RF testing can also be performed to document the electrical performance of your cable assembly.

Electrical Specifications

Description	Minimum	Typical	Maximum	Units
Frequency Range	DC		3	GHz
VSWR			1.4:1	

Mechanical Specifications

Cable Assembly

Width/Diameter	0.5 in [12.7 mm]
Weight	0.036 lbs [16.33 g]

Cable

Cable Type	RG-188
Impedance	50 Ohms
Inner Conductor Type	Stranded
Inner Conductor Material and Plating	Copper Clad Steel, Silver

RA SMC Plug to RA SMC Plug Cable RG-188 Coax



FMCA100068

Dielectric Type	PTFE
Number of Shields	1
Shield Layer 1	Silver Plated Copper Braid
Jacket Material	PTFE, White
Jacket Diameter	0.11 in [2.79 mm]

Connectors

Description	Connector 1	Connector 2
Type	SMC Plug Right Angle	SMC Plug Right Angle
Specification	MIL-STD-348A	MIL-STD-348A
Impedance	50 Ohms	50 Ohms
Configuration	Right Angle	Right Angle
Contact Material and Plating	Beryllium Copper, Gold	Beryllium Copper, Gold
Contact Plating Specification	30 µin minimum	30 µin minimum
Dielectric Type	PTFE	PTFE
Body Material and Plating	Brass, Nickel	Brass, Nickel
Body Plating Specification	100 µin minimum	100 µin minimum
Coupling Nut Material and Plating	Brass, Nickel	Brass, Nickel
Coupling Nut Plating Specification	100 µin minimum	100 µin minimum

Environmental Specifications

Operating Range Temperature	-55 to +165 deg C
-----------------------------	-------------------

Compliance Certifications (see [product page](#) for current document)

Plotted and Other Data

Notes:

RA SMC Plug to RA SMC Plug Cable RG-188 Coax



FMCA100068

Typical Performance Data

How to Order

Part Number Configuration:

FMCA100068

- **xx**

uu

Unit of Measure:

cm = Centimeters

<blank> = Inches

Length

Base Number

Example: FMCA100068-12 = 12 inches long cable
FMCA100068-100cm = 100 cm long cable

RA SMC Plug to RA SMC Plug Cable RG-188 Coax from Fairview Microwave is in-stock and available to ship same-day. All of our RF/microwave products are available off-the-shelf from our ISO 9001:2008 certified facilities in Lewisville, Texas. Fairview Microwave is RF on-demand.

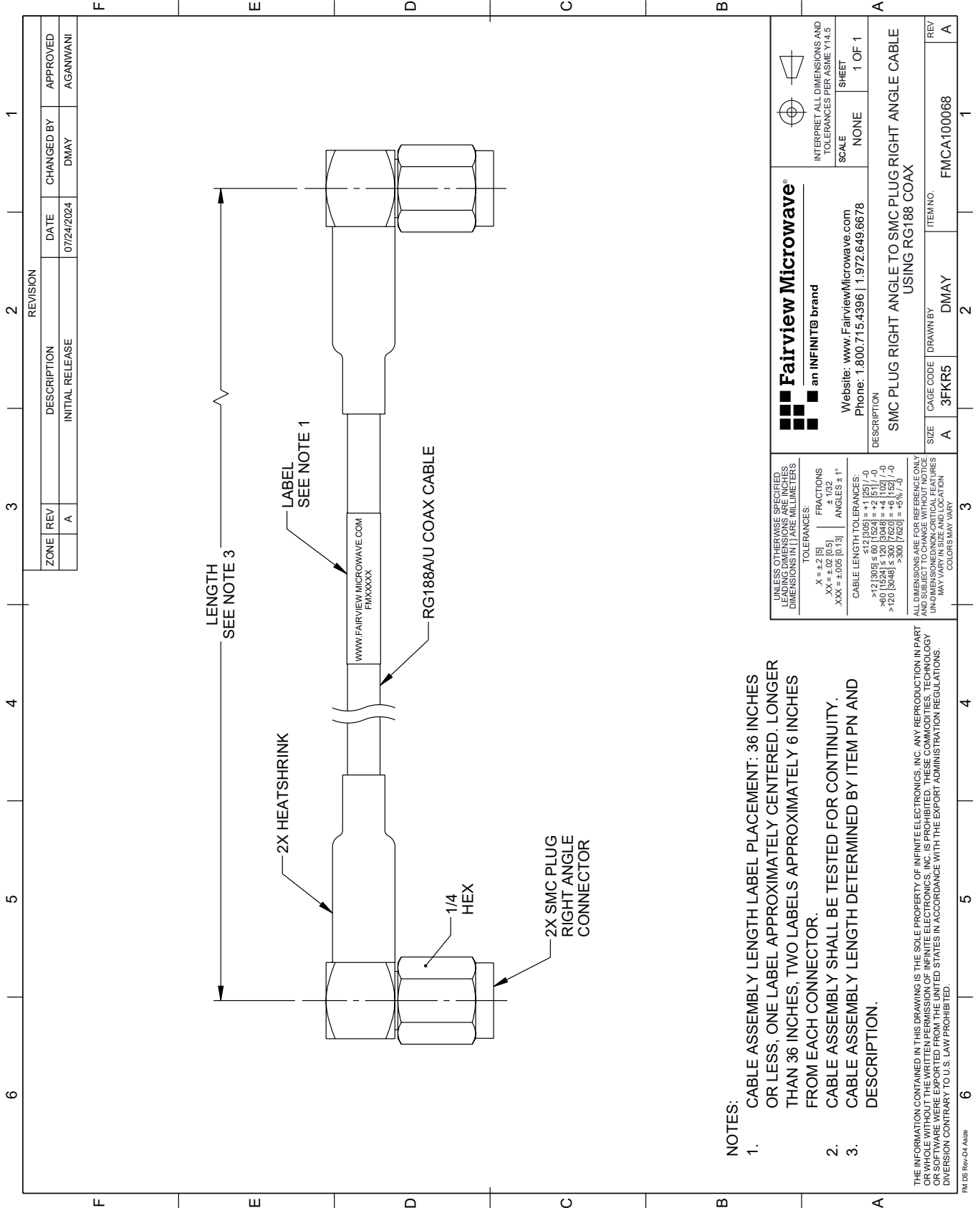
For additional information on this product, please click the following link: [RA SMC Plug to RA SMC Plug Cable RG-188 Coax FMCA100068](#)

URL: <https://www.fairviewmicrowave.com/ra-smc-plug-to-ra-smc-plug-cable-rg188-coax-fmca100068-p.aspx>

The information contained within this document is accurate to the best of our knowledge and representative of the part described herein. It may be necessary to make modifications to the part and/or the documentation of the part in order to implement improvements. Fairview Microwave reserves the right to make such changes as required. Unless otherwise stated, all specifications are nominal. Fairview Microwave does not make any representation or warranty regarding the suitability of the part described herein for any particular purpose, and Fairview Microwave does not assume liability arising out of the use of any part or document.

FMCA100068 CAD Drawing

RA SMC Plug to RA SMC Plug Cable RG-188 Coax



- NOTES:**
- CABLE ASSEMBLY LENGTH LABEL PLACEMENT: 36 INCHES OR LESS, ONE LABEL APPROXIMATELY CENTERED. LONGER THAN 36 INCHES, TWO LABELS APPROXIMATELY 6 INCHES FROM EACH CONNECTOR.
 - CABLE ASSEMBLY SHALL BE TESTED FOR CONTINUITY.
 - CABLE ASSEMBLY LENGTH DETERMINED BY ITEM PN AND DESCRIPTION.