

Test Probe Pigtail SMA Female to Stripped Lead Cable .047 Copper Tin Plated



FMCA1186

Configuration

- Connector 1: SMA Female
- Connector 2: Stripped Lead
- Cable Type: FM-SR047CUTN
- Coax Flex Type: Semi-Rigid

Features

- Max Frequency 6 GHz
- 100% RF Tested Prior to Final Trim
- 1.35:1 Max VSWR to 6 GHz
- 100% High Pot Tested to 500V
- .047 Diameter Semi-Rigid Coax
- Individually Packed in Protective Tube

Applications

- General Purpose
- Test & Measurement
- Laboratory Use
- RF test lead for measurements up to 6GHz
- Testing of individual function or subsection of an RF circuit board
- Inject signals for test and verification

Description

The 50 ohm pigtail SMA female to stripped lead cable using .047 coax, part number FMCA1186, from Fairview Microwave is in-stock and ships same day. Fairview Microwave's semi-rigid RF cable assemblies are ideal for high performance applications and can be formed, using proper tooling, to the routing pattern required. The FMCA1186 SMA female to stripped lead cable assembly operates to 6 GHz. Fairview's semi-rigid test probes are convenient ready-to-use probes designed for use in testing microwave circuits. These probes are constructed of high quality semi-rigid coax and SMA Female connectors. The assemblies come in multiple cable diameters to help when attaching two very fine traces or into tight spaces. There are two versions including straight-cut probe ends for those that would like to customize the dimensions of the center conductor and dielectric dimensions as well as pre-stripped probe ends that are ready for immediate use. Each assembly has been RF tested to ensure VSWR specifications of the assembly are met prior to trimming. Each assembly comes in special packaging to protect the small diameter coax and pre-trimmed probe ends.

Custom versions of most RF cable assemblies can be built and shipped same day. Custom cable assembly lengths can be obtained by specifying the desired length on the web site at time of order or by contacting a sales representative. Other RF cable assembly value added services including connector orientation or clocking, heat shrink booting and labeling are also available. RF testing can also be performed to document the electrical performance of your cable assembly.

Electrical Specifications

Description	Minimum	Typical	Maximum	Units
Frequency Range	DC		6	GHz
VSWR			1.35:1	

Test Probe Pigtail SMA Female to Stripped Lead Cable .047 Copper Tin Plated



FMCA1186

Electrical Specifications

Description	Minimum	Typical	Maximum	Units
Operating Voltage (AC)			500	Vrms

Specifications by Frequency

Description	F1	F2	F3	F4	F5	Units
Frequency	1	6				GHz
Insertion Loss (Typ.)	0.34	0.8				dB/ft dB/m
	1.12	2.62				
VSWR (Max.)	1.35:1	1.35:1				

Mechanical Specifications

Cable Assembly

Cable

Cable Type	FM-SR047CUTN
Impedance	50 Ohms
Inner Conductor Type	Solid
Inner Conductor Material and Plating	Copper Clad Steel, Silver
Dielectric Type	PTFE
Number of Shields	1
Outer Conductor 1 Material and Plating	Copper, Tin
Outer Conductor Diameter	0.047 in [1.19 mm]
Jacket Material	Tan

Connectors

Description	Connector 1	Connector 2
Type	SMA Female	Stripped Lead
Impedance	50 Ohms	0 Ohms
Configuration	Straight	Straight
Outer Conductor Material and Plating	Brass, Gold	
Body Material and Plating	Brass, Gold	

Environmental Specifications

Operating Range Temperature	+125 deg C
-----------------------------	------------

Compliance Certifications (see [product page](#) for current document)

Plotted and Other Data

Notes:

Test Probe Pigtail SMA Female to Stripped Lead Cable .047 Copper Tin Plated

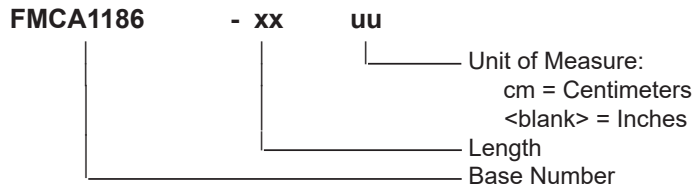


FMCA1186

Typical Performance Data

How to Order

Part Number Configuration:



Example: FMCA1186-12 = 12 inches long cable
 FMCA1186-100cm = 100 cm long cable

Test Probe Pigtail SMA Female to Stripped Lead Cable .047 Copper Tin Plated from Fairview Microwave is in-stock and available to ship same-day. All of our RF/microwave products are available off-the-shelf from our ISO 9001:2008 certified facilities in Lewisville, Texas. Fairview Microwave is RF on-demand.

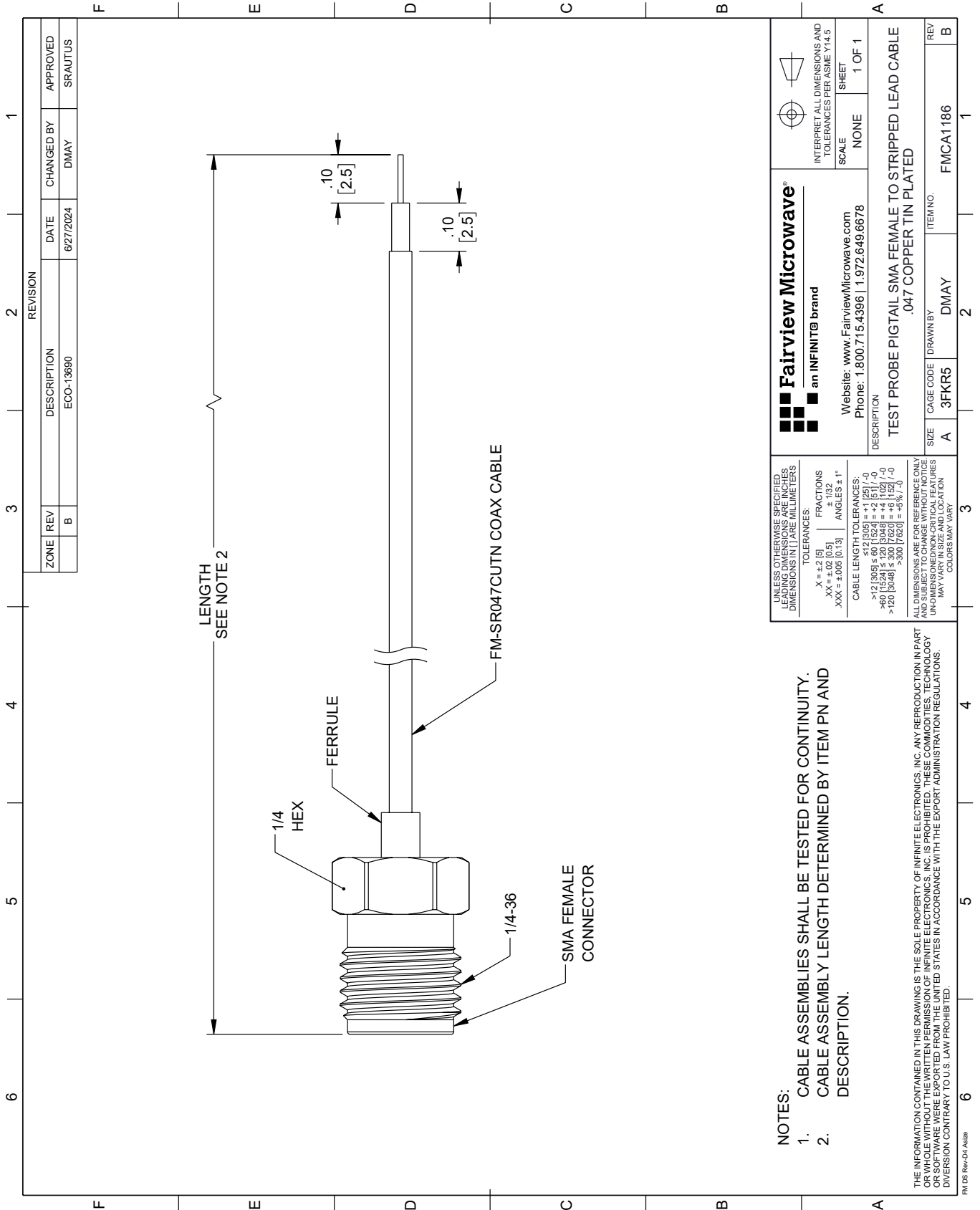
For additional information on this product, please click the following link: [Test Probe Pigtail SMA Female to Stripped Lead Cable .047 Copper Tin Plated FMCA1186](#)

URL: <https://www.fairviewmicrowave.com/test-probe-pigtail-sma-female-stripped-lead-lead-cable-.047-coax-fmca1186-p.aspx>

The information contained within this document is accurate to the best of our knowledge and representative of the part described herein. It may be necessary to make modifications to the part and/or the documentation of the part in order to implement improvements. Fairview Microwave reserves the right to make such changes as required. Unless otherwise stated, all specifications are nominal. Fairview Microwave does not make any representation or warranty regarding the suitability of the part described herein for any particular purpose, and Fairview Microwave does not assume liability arising out of the use of any part or document.

FMCA1186 CAD Drawing

Test Probe Pigtail SMA Female to Stripped Lead Cable .047 Copper Tin Plated



REVISION		DATE	CHANGED BY	APPROVED	
ZONE	REV	DESCRIPTION	ECO-13690	DMAY	SRAUTUS
	B				

Fairview Microwave®
an INFINIT® brand

Website: www.FairviewMicrowave.com
Phone: 1.800.715.4396 | 1.972.649.6678

UNLESS OTHERWISE SPECIFIED, LEADING DIMENSIONS ARE IN INCHES, DIMENSIONS IN [] ARE MILLIMETERS.

TOLERANCES:
 .X = ±.2 [5]
 .XX = ±.02 [0.5]
 .XXX = ±.005 [0.13]
 FRACTIONS ± 1/32
 ANGLES ± 1°

CABLE LENGTH TOLERANCES:
 <12 [305] ≤ 60 [1524] = ±.1 [25] / -0
 >60 [1524] ≤ 120 [3048] = ±.4 [102] / -0
 >120 [3048] ≤ 300 [7620] = ±.8 [20] / -0

ALL DIMENSIONS ARE FOR REFERENCE ONLY. UNDIMENSIONED/NON-CRITICAL FEATURES MAY VARY IN SIZE AND LOCATION. COLORS MAY VARY.

INTERPRET ALL DIMENSIONS AND TOLERANCES PER ASME Y14.5

SCALE: NONE
SHEET: 1 OF 1

DESCRIPTION: TEST PROBE PIGTAIL SMA FEMALE TO STRIPPED LEAD CABLE .047 COPPER TIN PLATED

SIZE	CAGE CODE	DRAWN BY	ITEM NO.
A	3FKR5	DMAY	FMCA1186

NOTES:

- CABLE ASSEMBLIES SHALL BE TESTED FOR CONTINUITY.
- CABLE ASSEMBLY LENGTH DETERMINED BY ITEM PN AND DESCRIPTION.

THE INFORMATION CONTAINED IN THIS DRAWING IS THE SOLE PROPERTY OF INFINITE ELECTRONICS, INC. ANY REPRODUCTION IN PART OR WHOLE WITHOUT THE WRITTEN PERMISSION OF INFINITE ELECTRONICS, INC. IS PROHIBITED. THESE COMMODITIES, TECHNOLOGY OR SOFTWARE WERE EXPORTED FROM THE UNITED STATES IN ACCORDANCE WITH THE EXPORT ADMINISTRATION REGULATIONS. DIVERSION CONTRARY TO U.S. LAW PROHIBITED.

FM DS Rev-D4 Alt2