

## Mini SMP Female to RA Mini SMP Female Cable FM-F086 Coax

The Mini SMP female to RA Mini SMP female cable using FM-F086 coax, part number FMCA2222, from Fairview Microwave is in-stock and ships same day. This Fairview Mini SMP to Mini SMP cable assembly has a female to female gender configuration with 50 ohm flexible FM-F086 coax. Fairview Microwave's flexible RF cable assemblies are ideal for applications where tight bends and continual flexure are required. The FMCA2222 Mini SMP female to Mini SMP female cable assembly operates to 26.5 GHz. The right angle Mini SMP interface on the FM-F086 cable allows for easier connections in tight spaces. The double shielding of this Fairview cable assembly provides excellent shielding effectiveness of better than 110 dB.

Custom versions of most RF cable assemblies can be built and shipped same day. Custom cable assembly lengths can be obtained by specifying the desired length on the web site at time of order or by contacting a sales representative. Other RF cable assembly value added services including connector orientation or clocking, heat shrink booting and labeling are also available. RF testing can also be performed to document the electrical performance of your cable assembly.

### Electrical Specifications

Description	Min	Typ	Max	Units
Frequency Range	DC		26.5	GHz
VSWR			1.5:1	
Velocity of Propagation		70		%
RF Shielding	110			dB
Capacitance		29.4 [96.46]		pF/ft [pF/m]

### Performance by Frequency

Description	F1	F2	F3	F4	F5	Units
Frequency	1	2	4.5	9	26.5	GHz
Insertion Loss (Typ.)	0.21	0.3	0.47	0.69	1.2	dB/ft
	0.69	0.98	1.54	2.26	3.94	dB/m

#### Electrical Specification Notes:

Insertion Loss does not include the loss of the connectors. Insertion Loss is estimated as 0.1 dB for the straight connector and 0.2 dB for the right angle connector.

### Mechanical Specifications

#### Cable Assembly

Weight 0.017 lbs [7.71 g]

#### Cable

Cable Type FM-F086  
 Impedance 50 Ohms  
 Inner Conductor Type Solid  
 Inner Conductor Material and Plating Copper Clad Steel, Silver  
 Dielectric Type PTFE  
 Number of Shields 2  
 Shield Layer 1 Silver Plated Copper Tape



### Configuration:

- Mini SMP Female
- Mini SMP Female Right Angle
- FM-F086

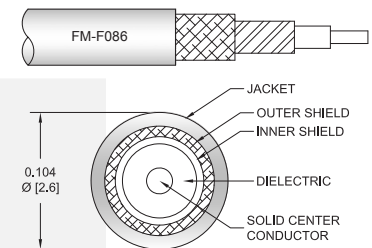
### Features:

- Max Frequency 26.5 GHz
- Shielding Effectivity > 110 dB
- 70% Phase Velocity
- Double Shielded
- FEP Jacket

### Applications:

- General Purpose
- Laboratory Use

### Cable Diagram:



Fairview Microwave  
 301 Leora Ln., Suite 100  
 Lewisville, TX 75056  
 Tel: 1-800-715-4396 / (972) 649-6678  
 Fax: (972) 649-6689  
[www.fairviewmicrowave.com](http://www.fairviewmicrowave.com)  
[sales@fairviewmicrowave.com](mailto:sales@fairviewmicrowave.com)

Shield Layer 2	Silver Plated Copper Braid
Jacket Material	FEP, Blue
Jacket Diameter	0.104 in [2.64 mm]
Repeated Minimum Bend Radius	0.5 in [12.7 mm]

**Connectors**

Description	Connector 1	Connector 2
Type	Mini SMP Female	Mini SMP Female
Specification		MIL-STD-348A
Impedance	50 Ohms	50 Ohms
Contact Material & Plating	Beryllium Copper, Gold	Beryllium Copper, Gold
Contact Plating Spec.	MIL-G-45204	
Dielectric Type	PTFE	PTFE
Outer Cond Material & Plating		Beryllium Copper, Gold
Body Material & Plating	Beryllium Copper, Gold	Beryllium Copper, Gold
Body Plating Spec.	MIL-G-45204	

**Environmental Specifications**
**Temperature**

Operating Range -55 to +155 deg C

**Compliance Certifications** (see [product page](#) for current document)

**Plotted and Other Data**

Notes:

**How to Order**

Part Number Configuration:

**FMCA2222 - xx uu**

cm = Centimeters  
 <blank> = Inches

Length

Example: FMCA2222-12 = 12 inches long cable  
 FMCA2222-100cm = 100 cm long cable

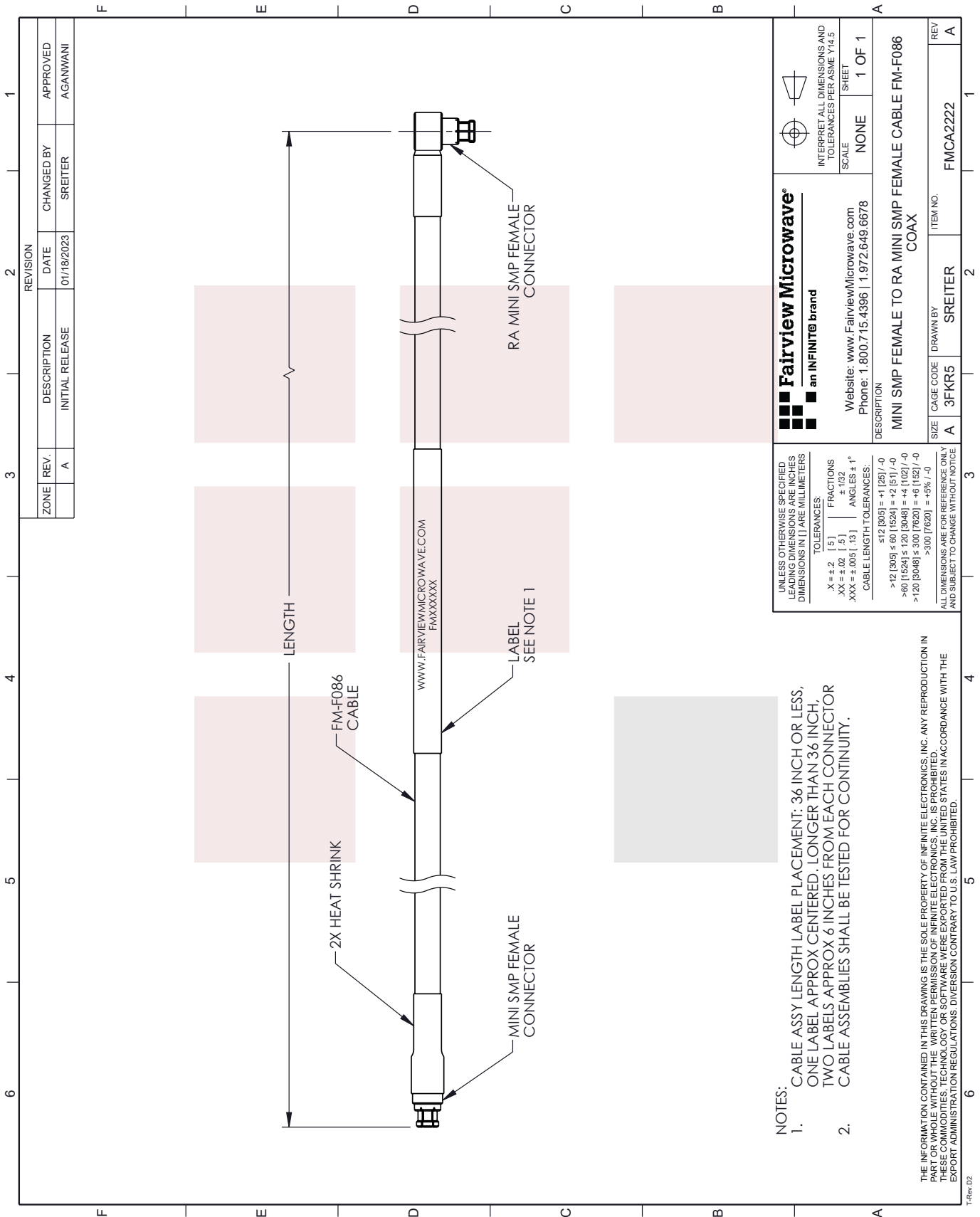
Mini SMP Female to RA Mini SMP Female Cable FM-F086 Coax from Fairview Microwave has same day shipment for domestic and International orders. Our RF, microwave and millimeter wave products maintain a 99% availability and are part of the broadest selection in the industry.

Click the following link to obtain additional part information: [Mini SMP Female to RA Mini SMP Female Cable FM-F086 Coax FMCA2222](#)

URL: <https://www.fairviewmicrowave.com/mini-smp-female-to-ra-mini-smp-female-cable-fm-f086-coax-fmca2222-p.aspx>

The information contained in this document is accurate to the best of our knowledge and representative of the part described herein. It may be necessary to make modifications to the part and/or the documentation of the part, in order to implement improvements. Fairview Microwave reserves the right to make such changes as required. Unless otherwise stated, all specifications are nominal. Fairview Microwave does not make any representation or warranty regarding the suitability of the part described herein for any particular purpose, and Fairview Microwave does not assume any liability arising out of the use of any part or documentation.





- NOTES:
- CABLE ASSY LENGTH LABEL PLACEMENT: 36 INCH OR LESS, ONE LABEL APPROX CENTERED, LONGER THAN 3/6 INCH, TWO LABELS APPROX 6 INCHES FROM EACH CONNECTOR. CABLE ASSEMBLIES SHALL BE TESTED FOR CONTINUITY.

UNLESS OTHERWISE SPECIFIED, LEADING DIMENSIONS ARE INCHES DIMENSIONS IN [ ] ARE MILLIMETERS

TOLERANCES:  
 .X = ± .2 [ .5 ] FRACTIONS  
 .XX = ± .02 [ .5 ] ± .132  
 .XXX = ± .005 [ .13 ] ANGLES ± 1°

CABLE LENGTH TOLERANCES:  
 ≤ 12 [ 305 ] = +1 [ 25 ] / -0  
 > 12 [ 305 ] ≤ 60 [ 1524 ] = +2 [ 51 ] / -0  
 > 60 [ 1524 ] ≤ 120 [ 3048 ] = +4 [ 102 ] / -0  
 > 120 [ 3048 ] ≤ 300 [ 7620 ] = +6 [ 152 ] / -0  
 > 300 [ 7620 ] = +5% / -0

ALL DIMENSIONS ARE FOR REFERENCE ONLY AND SUBJECT TO CHANGE WITHOUT NOTICE.

THE INFORMATION CONTAINED IN THIS DRAWING IS THE SOLE PROPERTY OF INFINITE ELECTRONICS, INC. ANY REPRODUCTION IN PART OR WHOLE WITHOUT THE WRITTEN PERMISSION OF INFINITE ELECTRONICS, INC. IS PROHIBITED. THESE COMMODITIES, TECHNOLOGY OR SOFTWARE WERE EXPORTED FROM THE UNITED STATES IN ACCORDANCE WITH THE EXPORT ADMINISTRATION REGULATIONS. DIVERSION CONTRARY TO U.S. LAW PROHIBITED.

<p><b>Fairview Microwave<sup>®</sup></b> an INFINIT<sup>®</sup> brand</p> <p>Website: <a href="http://www.FairviewMicrowave.com">www.FairviewMicrowave.com</a> Phone: 1.800.715.4396   1.972.649.6678</p>		<p>INTERPRET ALL DIMENSIONS AND TOLERANCES PER ASME Y14.5 SHEET</p> <p>SCALE: NONE</p> <p>SHEET: 1 OF 1</p>
<p>DESCRIPTION: MINI SMP FEMALE TO RA MINI SMP FEMALE CABLE FM-F086 COAX</p>		
<p>SIZE: A</p>	<p>CAGE CODE: 3FKR5</p>	<p>ITEM NO.: FMCA2222</p>
<p>REV: A</p>	<p>DRAWN BY: SREITER</p>	<p>REV: A</p>