

SHV Jack to SHV Jack Bulkhead Cable RG223 Coax in 24 Inch

The SHV jack to SHV jack bulkhead 24 inch cable using RG223 coax, part number FMCA3162-24, from Fairview Microwave is in-stock and ships same day. This Fairview SHV to SHV cable assembly has a jack to jack gender configuration with 50 ohm flexible RG223 coax. Fairview Microwave's flexible RF cable assemblies are ideal for applications where tight bends and continual flexure are required. The FMCA3162-24 SHV jack to SHV jack cable assembly operates to 300 MHz. Our RF cable assembly with SHV bulkhead interface allows designers to create external connections on their product enclosures, and can be used in a variety of other rack mount and panel mount applications. The double shielding of this Fairview cable assembly provides excellent shielding effectiveness. Safety high voltage connectors are designed to allow signal transmission with high voltage ratings without safety risk for the operators. Both the pin and socket contacts are securely recessed inside the insulation to guard against potential electrical shock when live unmated connectors are handled.

Custom versions of most RF cable assemblies can be built and shipped same day. Custom cable assembly lengths can be obtained by specifying the desired length on the web site at time of order or by contacting a sales representative. Other RF cable assembly value added services including connector orientation or clocking, heat shrink booting and labeling are also available. RF testing can also be performed to document the electrical performance of your cable assembly.

Electrical Specifications

| Description | Min | Typ | Max | Units |
|-------------------------|-----|---------------|-------|--------------|
| Frequency Range | DC | | 300 | MHz |
| Velocity of Propagation | | 66 | | % |
| Capacitance | | 30.8 [101.05] | | pF/ft [pF/m] |
| Operating Voltage (AC) | | | 1,900 | Vrms |

Performance by Frequency

| Description | F1 | F2 | F3 | F4 | F5 | Units |
|-----------------------|------|------|------|----|----|-------|
| Frequency | 100 | 250 | 300 | | | MHz |
| Insertion Loss (Typ.) | 0.28 | 0.33 | 0.34 | | | dB |

Electrical Specification Notes:

The Insertion Loss data above is based on the performance specifications of the coax and connectors used in this assembly. The Insertion Loss includes an estimated insertion loss of 0.1 dB per connector.

Mechanical Specifications

Cable Assembly

| | |
|---------|----------------------|
| Length* | 24 in [609.6 mm] |
| Weight | 0.667 lbs [302.55 g] |

Cable

| | |
|--------------------------------------|----------------|
| Cable Type | RG223 |
| Impedance | 50 Ohms |
| Inner Conductor Type | Solid |
| Inner Conductor Material and Plating | Copper, Silver |
| Dielectric Type | PE |



Configuration:

- SHV Jack
- SHV Jack Bulkhead
- RG223

Features:

- Max Frequency 300 MHz
- 66% Phase Velocity
- Double Shielded
- PVC Jacket
- Dielectric withstanding of 5kV
- Shock, Moisture & Corrosion resistant
- Recessed contacts prevent shock hazards

Applications:

- General Purpose
- Laboratory Use
- Nuclear Instrumentation
- High Voltage Electrical Transmission
- Semiconductor Test

Fairview Microwave
 301 Leora Ln., Suite 100
 Lewisville, TX 75056
 Tel: 1-800-715-4396 / (972) 649-6678
 Fax: (972) 649-6689
www.fairviewmicrowave.com
sales@fairviewmicrowave.com

| | |
|------------------------------|----------------------------|
| Number of Shields | 2 |
| Shield Layer 1 | Silver Plated Copper Braid |
| Shield Layer 2 | Silver Plated Copper Braid |
| Jacket Material | PVC, Black |
| Jacket Diameter | 0.209 in [5.31 mm] |
| Repeated Minimum Bend Radius | 1 in [25.4 mm] |

Connectors

| Description | Connector 1 | Connector 2 |
|---------------------------------|-------------------------------------|-------------------------------------|
| Type | SHV Jack | SHV Jack |
| Mount Method | | Bulkhead |
| Specification | MIL-STD-348B | MIL-STD-348B |
| Impedance | 50 Ohms | 50 Ohms |
| Contact Material & Plating | Brass, Gold over Nickel over copper | Brass, Gold over Nickel over copper |
| Dielectric Type | Teflon | Teflon |
| Body Material & Plating | Brass, Tinned Copper | Brass, Tinned Copper |
| Coupling Nut Material & Plating | | Brass, Tinned Copper |
| Hex Size | | 7/16 Inch |

Environmental Specifications

| | |
|--------------------------------|------------------|
| Temperature | |
| Operating Range | -40 to +80 deg C |
| Ingress Protection (IP) Rating | IP67 Rated |

Compliance Certifications (see [product page](#) for current document)

Plotted and Other Data

Notes:

How to Order

Part Number Configuration:

FMCA3162 - xx uu

cm = Centimeters
<blank> = Inches
Length

Example: FMCA3162-12 = 12 inches long cable
FMCA3162-100cm = 100 cm long cable

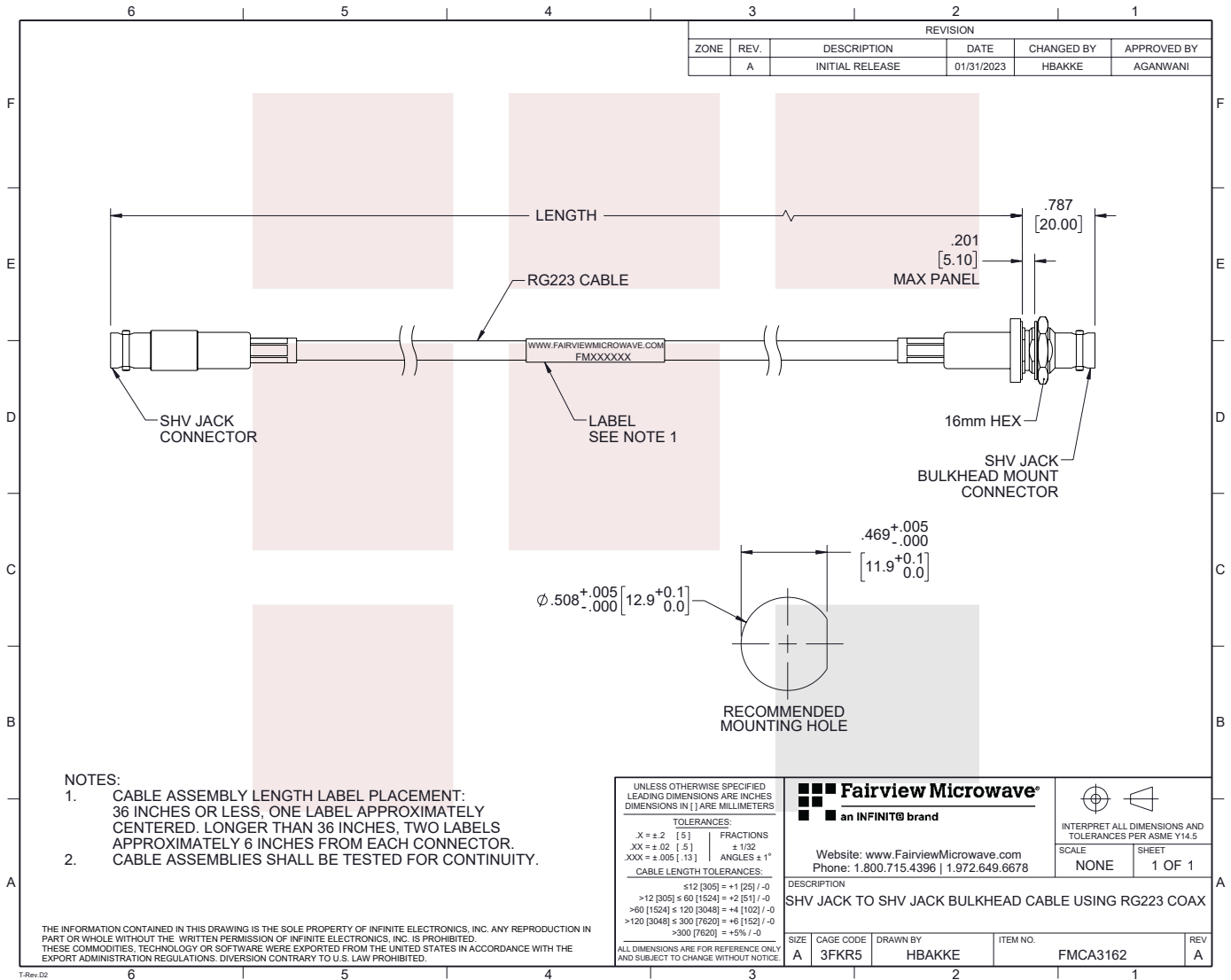
SHV Jack to SHV Jack Bulkhead Cable RG223 Coax in 24 Inch from Fairview Microwave has same day shipment for domestic and International orders. Our RF, microwave and millimeter wave products maintain a 99% availability and are part of the broadest selection in the industry.

Click the following link to obtain additional part information: [SHV Jack to SHV Jack Bulkhead Cable RG223 Coax in 24 Inch FMCA3162-24](https://www.fairviewmicrowave.com/shv-jack-to-shv-jack-bulkhead-cable-rg223-coax-in-24-inch-fmca3162-24)

URL: <https://www.fairviewmicrowave.com/shv-jack-to-shv-jack-bulkhead-cable-rg223-coax-in-24-inch-fmca3162-24-p.aspx>

The information contained in this document is accurate to the best of our knowledge and representative of the part described herein. It may be necessary to make modifications to the part and/or the documentation of the part, in order to implement improvements. Fairview Microwave reserves the right to make such changes as required. Unless otherwise stated, all specifications are nominal. Fairview Microwave does not make any representation or warranty regarding the suitability of the part described herein for any particular purpose, and Fairview Microwave does not assume any liability arising out of the use of any part or documentation.





SHV Jack to SHV Jack Bulkhead Cable RG223 Coax in 24 Inch