

## 20KV Male to 20KV Female Bulkhead Cable RG213HV Coax

The 20KV male to 20KV female bulkhead cable using RG213HV coax, part number FMCA9767, from Fairview Microwave is in-stock and ships same day. This Fairview 20KV to 20KV cable assembly has a male to female gender configuration with 50 ohm RG213HV coax. Our RF cable assembly with 20KV bulkhead interface allows designers to create external connections on their product enclosures, and can be used in a variety of other rack mount and panel mount applications. Our 20kv high voltage RF cable assemblies are designed to handle higher voltages and minimize the risk of electric shock. Both the connectors used in this cable assemblies have recessed contact design to withstand unmated higher voltage. These cable assemblies are commonly used in applications where high voltage transmission and RF signal integrity are critical. These cable assemblies are constructed with high-quality insulation materials capable of withstanding higher voltages, ensuring safety and preventing electrical breakdown. Our cable assemblies are built with durable and flexible materials to withstand harsh environmental conditions and repetitive movements, ensuring reliable performance over extended periods.

Custom versions of most RF cable assemblies can be built and shipped same day. Custom cable assembly lengths can be obtained by specifying the desired length on the web site at time of order or by contacting a sales representative. Other RF cable assembly value added services including connector orientation or clocking, heat shrink booting and labeling are also available. RF testing can also be performed to document the electrical performance of your cable assembly.

### Electrical Specifications

Description	Min	Typ	Max	Units
Velocity of Propagation		69		%
Operating Voltage (DC)			20,000	Vdc
Test Voltage (DC)			30,000	V

Electrical Specification Notes:  
 Values at 25°C, sea level.

### Mechanical Specifications

#### Cable Assembly

Weight 0.072 lbs [32.66 g]

#### Cable

Cable Type RG213HV  
 Impedance 50 Ohms  
 Inner Conductor Material and Plating Copper, Bare  
 Dielectric Type PE  
 Number of Shields 1  
 Jacket Material Polyurethane  
 Jacket Diameter 0.394 in [10.01 mm]  
 Repeated Minimum Bend Radius 1.969 in [50.01 mm]



### Configuration:

- 20KV Male
- 20KV Female Bulkhead
- RG213HV

### Features:

- 69% Phase Velocity
- Polyurethane Jacket
- Voltage rating of 10kV
- Recessed Contacts

### Applications:

- General Purpose
- Laboratory Use
- High voltage power supplies/Amplifiers
- Nuclear instrumentation
- Test and measurement equipment

Fairview Microwave  
 301 Leora Ln., Suite 100  
 Lewisville, TX 75056  
 Tel: 1-800-715-4396 / (972) 649-6678  
 Fax: (972) 649-6689  
[www.fairviewmicrowave.com](http://www.fairviewmicrowave.com)  
[sales@fairviewmicrowave.com](mailto:sales@fairviewmicrowave.com)

**Connectors**

Description	Connector 1	Connector 2
Type	20KV Male Bayonet	20KV Female Bayonet
Mount Method		Bulkhead
Specification	MIL-STD-202	MIL-STD-202
Impedance	50 Ohms	50 Ohms
Contact Material & Plating	Brass, Gold/Tri-Metal	Beryllium Copper, Gold/Tri-Metal
Dielectric Type	PE (HD)	PE (HD)
Body Material & Plating	Brass, Tinned Copper	Brass, Nickel Over Copper
Coupling Nut Material & Plating	Brass, Tinned Copper	Brass, Nickel Over Copper

**Compliance Certifications** (see [product page](#) for current document)

**Plotted and Other Data**

Notes:

- Values at 25°C, sea level.

**How to Order**

Part Number Configuration:

**FMCA9767 - xx uu**

cm = Centimeters  
<blank> = Inches  
Length

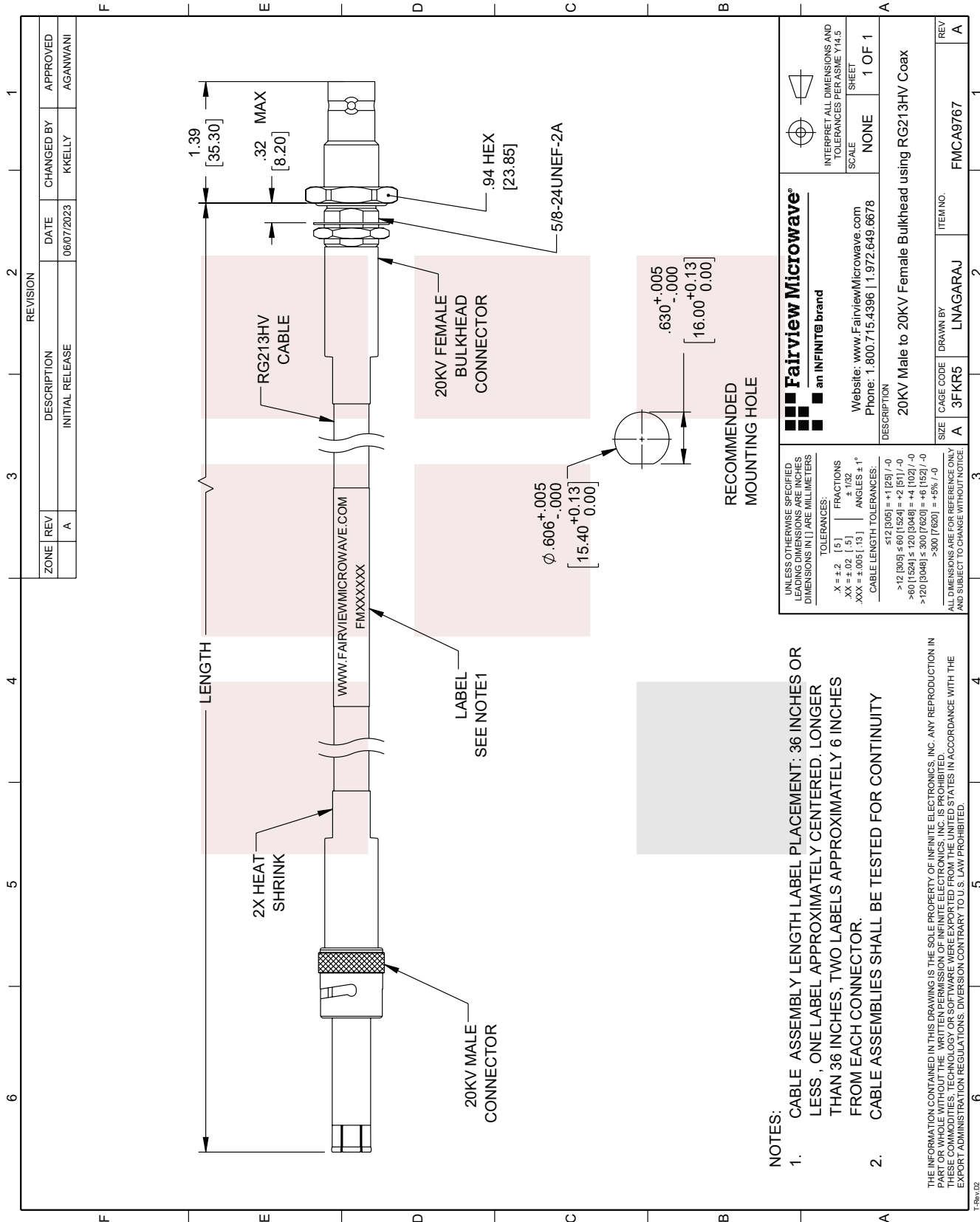
Example: FMCA9767-12 = 12 inches long cable  
FMCA9767-100cm = 100 cm long cable

20KV Male to 20KV Female Bulkhead Cable RG213HV Coax from Fairview Microwave has same day shipment for domestic and International orders. Our RF, microwave and millimeter wave products maintain a 99% availability and are part of the broadest selection in the industry.

Click the following link to obtain additional part information: [20KV Male to 20KV Female Bulkhead Cable RG213HV Coax FMCA9767](#)

URL: <https://www.fairviewmicrowave.com/20kv-male-to-20kv-female-bulkhead-cable-rg213hv-coax-fmca9767-p.aspx>

The information contained in this document is accurate to the best of our knowledge and representative of the part described herein. It may be necessary to make modifications to the part and/or the documentation of the part, in order to implement improvements. Fairview Microwave reserves the right to make such changes as required. Unless otherwise stated, all specifications are nominal. Fairview Microwave does not make any representation or warranty regarding the suitability of the part described herein for any particular purpose, and Fairview Microwave does not assume any liability arising out of the use of any part or documentation.



REVISION		DATE	CHANGED BY	APPROVED
ZONE	REV			
	A	06/07/2023	KKELLY	AGANWANI
DESCRIPTION				
INITIAL RELEASE				

<p><b>Fairview Microwave</b> an INFINITE brand</p>		<p>INTERPRET ALL DIMENSIONS AND TOLERANCES PER ASME Y14.5</p>
<p>Website: <a href="http://www.FairviewMicrowave.com">www.FairviewMicrowave.com</a> Phone: 1.800.715.4396   1.972.649.6678</p>		<p>SCALE: NONE SHEET: 1 OF 1</p>
<p>DESCRIPTION: 20KV Male to 20KV Female Bulkhead using RG213HV Coax</p>		
SIZE	CAGE CODE	ITEM NO.
A	3FKR5	LNAGARAJ
DRAWN BY		REV
LNAGARAJ		A

UNLESS OTHERWISE SPECIFIED, LEADING DIMENSIONS ARE IN INCHES, DIMENSIONS IN [ ] ARE MILLIMETERS.

TOLERANCES:  
 .X ± .2 [ .5 ] FRACTIONS ± 1/32 ANGLES ± 1°  
 .XX ± .02 [ .5 ]  
 .XXX ± .005 [ .13 ]

CABLE LENGTH TOLERANCES:  
 ≤ 12 [305] = +1 [25] / -0  
 > 12 [305] ≤ 60 [1524] = +2 [51] / -0  
 > 60 [1524] ≤ 120 [3048] = +4 [102] / -0  
 > 120 [3048] ≤ 300 [7620] = +6 [152] / -0  
 > 300 [7620] = +5% / -0

ALL DIMENSIONS ARE FOR REFERENCE ONLY AND SUBJECT TO CHANGE WITHOUT NOTICE.

- NOTES:
- CABLE ASSEMBLY LENGTH LABEL PLACEMENT: 36 INCHES OR LESS, ONE LABEL APPROXIMATELY CENTERED. LONGER THAN 36 INCHES, TWO LABELS APPROXIMATELY 6 INCHES FROM EACH CONNECTOR.
  - CABLE ASSEMBLIES SHALL BE TESTED FOR CONTINUITY
- THE INFORMATION CONTAINED IN THIS DRAWING IS THE SOLE PROPERTY OF INFINITE ELECTRONICS, INC. ANY REPRODUCTION IN WHOLE OR IN PART WITHOUT THE WRITTEN PERMISSION OF INFINITE ELECTRONICS, INC. IS PROHIBITED. THESE COMMODITIES, TECHNOLOGY OR SOFTWARE WERE EXPORTED FROM THE UNITED STATES IN ACCORDANCE WITH THE EXPORT ADMINISTRATION REGULATIONS. DIVERSION CONTRARY TO U.S. LAW PROHIBITED.