

SMP Plug Right Angle to SMP Plug Right Angle using RG316 Coax Cable in 24 Inches

The RA SMP plug to RA SMP plug 24 inch cable using RG316, part number FMCA9846-24, from Fairview Microwave is in-stock and ships same day. This Fairview SMP to SMP cable assembly has a plug to plug gender configuration with 50 ohm RG316. The FMCA9846-24 SMP plug to SMP plug cable assembly operates to 3 GHz. The right angle SMP interfaces on the RG316 cable allow for easier connections in tight spaces.

Custom versions of most RF cable assemblies can be built and shipped same day. Custom cable assembly lengths can be obtained by specifying the desired length on the web site at time of order or by contacting a sales representative. Other RF cable assembly value added services including connector orientation or clocking, heat shrink booting and labeling are also available. RF testing can also be performed to document the electrical performance of your cable assembly.

Electrical Specifications

Description	Min	Typ	Max	Units
Frequency Range	DC		3	GHz
VSWR			1.4:1	
Velocity of Propagation		69		%
Capacitance		29.4 [96.46]		pF/ft [pF/m]

Performance by Frequency

Description	F1	F2	F3	F4	F5	Units
Frequency	0.1	0.25	0.5	1	3	GHz
Insertion Loss (Typ.)	0.62	0.72	0.88	1.16	1.56	dB

Electrical Specification Notes:

Insertion Loss does not include the loss of the connectors. Insertion Loss is estimated as 0.2 dB per connector

Mechanical Specifications

Cable Assembly

Length* 24 in [609.6 mm]
 Weight 0.081 lbs [36.74 g]

Cable

Cable Type RG316
 Impedance 50 Ohms
 Inner Conductor Type Stranded
 Inner Conductor Material and Plating Copper Clad Steel, Silver
 Dielectric Type PTFE



Configuration:

- SMP Plug Right Angle
- SMP Plug Right Angle
- RG316

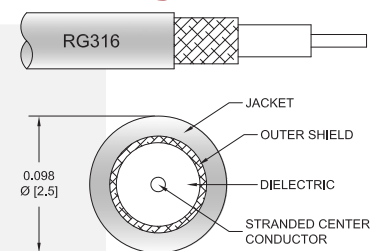
Features:

- Max Frequency 3 GHz
- 69% Phase Velocity
- VSWR of 1.4:1

Applications:

- General Purpose
- Laboratory Use
- Military
- Aerospace
- Wireless Communications
- General Purpose Test

Cable Diagram:



Fairview Microwave
 301 Leora Ln., Suite 100
 Lewisville, TX 75056
 Tel: 1-800-715-4396 / (972) 649-6678
 Fax: (972) 649-6689
www.fairviewmicrowave.com
sales@fairviewmicrowave.com

Connectors

Description	Connector 1	Connector 2
Type	SMP Plug Threaded	SMP Plug Threaded
Impedance	50 Ohms	50 Ohms
Contact Material & Plating	Beryllium Copper, Gold over Copper	Beryllium Copper, Gold over Copper
Body Material & Plating	Bronze, Copper-Tin-Zinc Alloy	Bronze, Copper-Tin-Zinc Alloy

Compliance Certifications (see [product page](#) for current document)

Plotted and Other Data

- Notes:
- Values at 25°C, sea level.

How to Order

Part Number Configuration: **FMCA9846 - xx uu**

cm = Centimeters
 <blank> = Inches
 Length

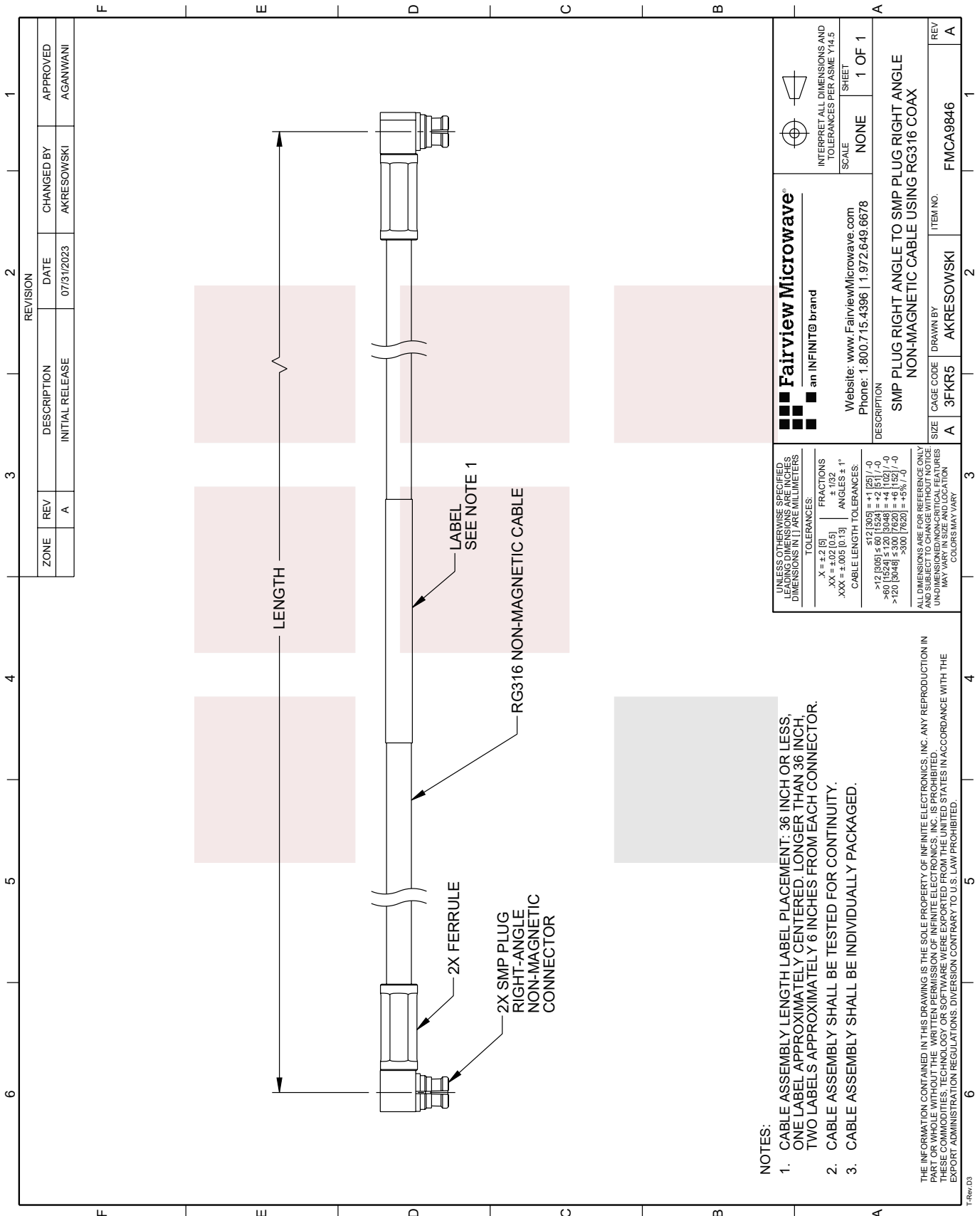
Example: FMCA9846-12 = 12 inches long cable
 FMCA9846-100cm = 100 cm long cable

SMP Plug Right Angle to SMP Plug Right Angle using RG316 Coax Cable in 24 Inches from Fairview Microwave has same day shipment for domestic and International orders. Our RF, microwave and millimeter wave products maintain a 99% availability and are part of the broadest selection in the industry.

Click the following link to obtain additional part information: [SMP Plug Right Angle to SMP Plug Right Angle using RG316 Coax Cable in 24 Inches FMCA9846-24](#)

URL: <https://www.fairviewmicrowave.com/non-magnetic-ra-smp-plug-to-ra-smp-plug-cable-rg316-coax-in-24-inch-fm-ca9846-24-p.aspx>

The information contained in this document is accurate to the best of our knowledge and representative of the part described herein. It may be necessary to make modifications to the part and/or the documentation of the part, in order to implement improvements. Fairview Microwave reserves the right to make such changes as required. Unless otherwise stated, all specifications are nominal. Fairview Microwave does not make any representation or warranty regarding the suitability of the part described herein for any particular purpose, and Fairview Microwave does not assume any liability arising out of the use of any part or documentation.



NOTES:

1. CABLE ASSEMBLY LENGTH LABEL PLACEMENT: 36 INCH OR LESS, ONE LABEL APPROXIMATELY CENTERED, LONGER THAN 36 INCH, TWO LABELS APPROXIMATELY 6 INCHES FROM EACH CONNECTOR.
2. CABLE ASSEMBLY SHALL BE TESTED FOR CONTINUITY.
3. CABLE ASSEMBLY SHALL BE INDIVIDUALLY PACKAGED.

THE INFORMATION CONTAINED IN THIS DRAWING IS THE SOLE PROPERTY OF INFINITE ELECTRONICS, INC. ANY REPRODUCTION IN PART OR WHOLE WITHOUT THE WRITTEN PERMISSION OF INFINITE ELECTRONICS, INC. IS PROHIBITED. THESE COMMODITIES, TECHNOLOGY OR SOFTWARE WERE EXPORTED FROM THE UNITED STATES IN ACCORDANCE WITH THE EXPORT ADMINISTRATION REGULATIONS. DIVERSION CONTRARY TO U.S. LAW PROHIBITED.

UNLESS OTHERWISE SPECIFIED, LEADING DIMENSIONS ARE INCHES, DIMENSIONS IN [] ARE MILLIMETERS	
TOLERANCES:	FRACTIONS
.X = ±.2 [5]	±.132
.XX = ±.02 [0.5]	ANGLES ± 1°
.XXX = ±.005 [0.13]	CABLE LENGTH TOLERANCES:
	\$12 [305] = ±.1 [25] / -0
	>.12 [3.05] ≤.60 [15.24] = ±.01 [0.25] / -0
	>.60 [15.24] ≤.300 [76.20] = ±.02 [0.51] / -0
	>.300 [76.20] ≤.600 [152.4] = ±.03 [0.76] / -0
	>.600 [152.4] ≤.3000 [76200] = ±.05% / -0
ALL DIMENSIONS ARE FOR REFERENCE ONLY AND SUBJECT TO CHANGE WITHOUT NOTICE UNLESS DIMENSIONED/CRITICAL FEATURES MAY VARY IN SIZE AND LOCATION COLORS MAY VARY	

<p>Fairview Microwave an INFINIT[®] brand</p> <p>Website: www.FairviewMicrowave.com Phone: 1.800.715.4396 1.972.649.6678</p>		<p>INTERPRET ALL DIMENSIONS AND TOLERANCES PER ASME Y14.5</p> <p>SCALE: NONE</p> <p>SHEET: 1 OF 1</p>
DESCRIPTION		
SMP PLUG RIGHT ANGLE TO SMP PLUG RIGHT ANGLE NON-MAGNETIC CABLE USING RG316 COAX		
SIZE	CAGE CODE	ITEM NO.
A	3FKR5	AKRESOWSKI
REV	FMC9846	
A	1	

REVISION			
ZONE	REV	DESCRIPTION	DATE
	A	INITIAL RELEASE	07/31/2023
		CHANGED BY	AKRESOWSKI
		APPROVED	AGANWANI