

SMB Plug to SMB Plug using RG316 Coax Cable 48 Inches



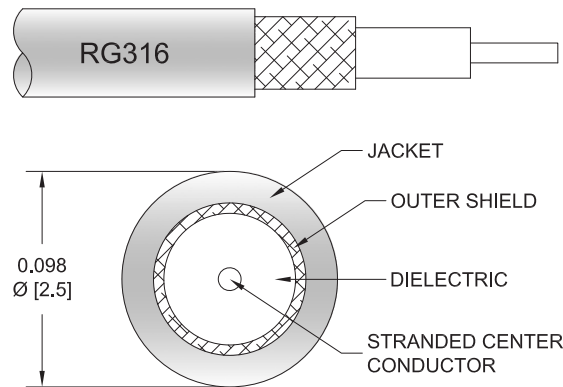
FMCA9849-48

Configuration

- Connector 1: SMB Plug
- Connector 2: SMB Plug
- Cable Type: RG316

Features

- Max Frequency 3 GHz
- 69% Phase Velocity
- VSWR of 1.4:1



Applications

- General Purpose
- Laboratory Use
- Military
- Aerospace
- Wireless Communications
- General Purpose Test

Description

The SMB plug to SMB plug 48 inch cable using RG316, part number FMCA9849-48, from Fairview Microwave is in-stock and ships same day. This Fairview SMB to SMB cable assembly has a plug to plug gender configuration with 50 ohm RG316. The FMCA9849-48 SMB plug to SMB plug cable assembly operates to 3 GHz.

Custom versions of most RF cable assemblies can be built and shipped same day. Custom cable assembly lengths can be obtained by specifying the desired length on the web site at time of order or by contacting a sales representative. Other RF cable assembly value added services including connector orientation or clocking, heat shrink booting and labeling are also available. RF testing can also be performed to document the electrical performance of your cable assembly.

Electrical Specifications

Description	Minimum	Typical	Maximum	Units
Frequency Range	DC		3	GHz
VSWR			1.4:1	
Velocity of Propagation		69		%
Capacitance		29.4 [96.46]		pF/ft [pF/m]

Specifications by Frequency

Description	F1	F2	F3	F4	F5	Units
Frequency	0.1	0.25	0.5	1	3	GHz
Insertion Loss (Typ.)	0.64	0.84	1.16	1.72	2.52	dB

Electrical Specification Notes:

Insertion Loss does not include the loss of the connectors. Insertion Loss is estimated as 0.2 dB per connector

SMB Plug to SMB Plug using RG316 Coax Cable 48 Inches



FMCA9849-48

Mechanical Specifications

Cable Assembly

Length	48 in [121.92 cm]
Width/Diameter	0.5 in [12.7 mm]
Weight	0.028 lbs [12.7 g]

Cable

Cable Type	RG316
Impedance	50 Ohms
Inner Conductor Type	Stranded
Inner Conductor Material and Plating	Copper Clad Steel, Silver
Dielectric Type	PTFE

Connectors

Description	Connector 1	Connector 2
Type	SMB Plug	SMB Plug
Impedance	50 Ohms	50 Ohms
Configuration	Straight	Straight
Contact Material and Plating	Beryllium Copper, Gold over Copper	Beryllium Copper, Gold over Copper
Body Material and Plating	Bronze, Copper-Tin-Zinc Alloy	Bronze, Copper-Tin-Zinc Alloy

Environmental Specifications

Compliance Certifications (see [product page](#) for current document)

Plotted and Other Data

Notes:
Values at 25°C, sea level.

SMB Plug to SMB Plug using RG316 Coax Cable 48 Inches



FMCA9849-48

Typical Performance Data

How to Order

Part Number Configuration:

FMCA9849

- **xx**

uu

Unit of Measure:
cm = Centimeters
<blank> = Inches
Length
Base Number

Example: FMCA9849-12 = 12 inches long cable
FMCA9849-100cm = 100 cm long cable

SMB Plug to SMB Plug using RG316 Coax Cable 48 Inches from Fairview Microwave is in-stock and available to ship same-day. All of our RF/microwave products are available off-the-shelf from our ISO 9001:2008 certified facilities in Lewisville, Texas. Fairview Microwave is RF on-demand.

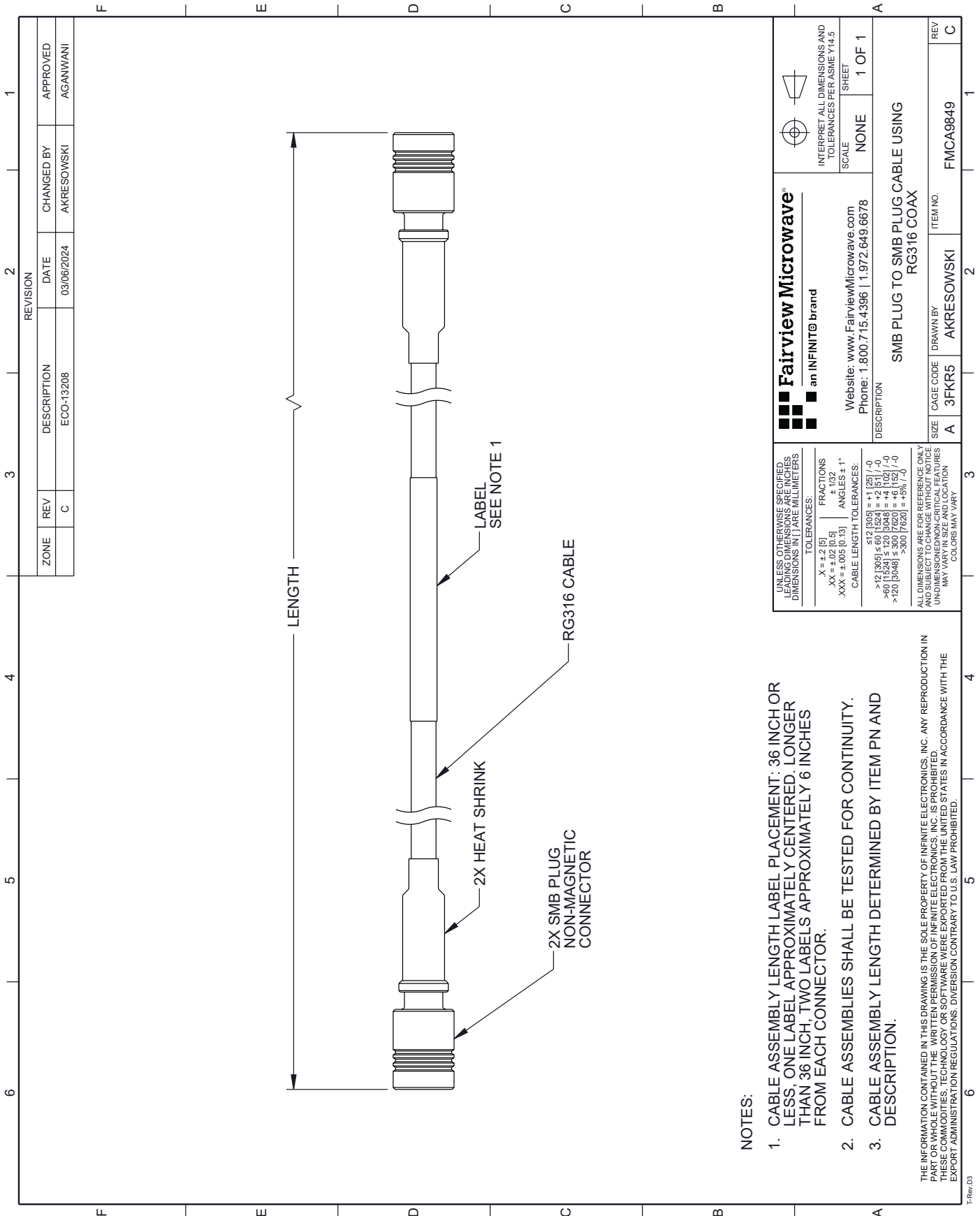
For additional information on this product, please click the following link: [SMB Plug to SMB Plug using RG316 Coax Cable 48 Inches FMCA9849-48](#)

URL: <https://www.fairviewmicrowave.com/non-magnetic-smb-plug-to-smb-plug-cable-rg316-coax-in-48-inch-fmca9849-48-p.aspx>

The information contained within this document is accurate to the best of our knowledge and representative of the part described herein. It may be necessary to make modifications to the part and/or the documentation of the part in order to implement improvements. Fairview Microwave reserves the right to make such changes as required. Unless otherwise stated, all specifications are nominal. Fairview Microwave does not make any representation or warranty regarding the suitability of the part described herein for any particular purpose, and Fairview Microwave does not assume liability arising out of the use of any part or document.

FMCA9849-48 CAD Drawing

SMB Plug to SMB Plug using RG316 Coax Cable 48 Inches



NOTES:

1. CABLE ASSEMBLY LENGTH LABEL PLACEMENT: 36 INCH OR LESS, ONE LABEL APPROXIMATELY CENTERED. LONGER THAN 36 INCH, TWO LABELS APPROXIMATELY 6 INCHES FROM EACH CONNECTOR.
2. CABLE ASSEMBLIES SHALL BE TESTED FOR CONTINUITY.
3. CABLE ASSEMBLY LENGTH DETERMINED BY ITEM PN AND DESCRIPTION.

THE INFORMATION CONTAINED IN THIS DRAWING IS THE SOLE PROPERTY OF INFINITE ELECTRONICS, INC.. ANY REPRODUCTION IN PART OR WHOLE WITHOUT THE WRITTEN PERMISSION OF INFINITE ELECTRONICS, INC. IS PROHIBITED. THESE COMMODITIES, TECHNOLOGY OR SOFTWARE WERE EXPORTED FROM THE UNITED STATES IN ACCORDANCE WITH THE EXPORT ADMINISTRATION REGULATIONS. DIVERSION CONTRARY TO U.S. LAW PROHIBITED.

TRRev.03

REVISION		ZONE	REV	DESCRIPTION	DATE	CHANGED BY	APPROVED
			C	ECO-13208	03/06/2024	AKRESOWSKI	AGANWANI

Fairview Microwave an INFINIT@ brand		Website: www.FairviewMicrowave.com Phone: 1.800.715.4396 1.972.649.6678		INTERPRET ALL DIMENSIONS AND TOLERANCES PER ASME Y14.5 SCALE: NONE SHEET: 1 OF 1
DESCRIPTION: SMB PLUG TO SMB PLUG CABLE USING RG316 COAX				
SIZE: A	CAGE CODE: 3FKR5	DRAWN BY: AKRESOWSKI	ITEM NO: FMCA9849	REV: C

UNLESS OTHERWISE SPECIFIED, LEADING DIMENSIONS ARE IN INCHES. DIMENSIONS IN [] ARE MILLIMETERS.	TOLERANCES:
.X = ±.2 (5)	FRACTIONS ± 1/32
.XX = ±.02 (0.5)	ANGLES ± 1°
.XXX = ±.005 (0.13)	CABLE LENGTH TOLERANCES:
	<12 (305) ±.1 (25) / -0
	>12 (305) ≤ 60 (1524) = ±.2 (5) / -0
	>60 (1524) ≤ 120 (3048) = ±.4 (102) / -0
	>120 (3048) ≤ 300 (7620) = ±.6 (152) / -0
	>300 (7620) = ±.9% (L)
ALL DIMENSIONS ARE FOR REFERENCE ONLY AND SUBJECT TO CHANGE WITHOUT NOTICE. DIMENSIONS ARE IN INCHES UNLESS OTHERWISE SPECIFIED. DIMENSIONS MAY VARY IN SIZE AND LOCATION. COLORS MAY VARY.	