

## SMPS Female to 1.85mm Male Cable FM-P047HF Coax

The SMPS female to 1.85mm male cable using FM-P047HF coax, part number FMCA9956, from Fairview Microwave is in-stock and ships same day. This Fairview SMPS to 1.85mm cable assembly has a female to male gender configuration with 50 ohm flexible FM-P047HF coax. Fairview Microwave's flexible RF cable assemblies are ideal for applications where tight bends and continual flexure are required. The FMCA9956 SMPS female to 1.85mm male cable assembly operates to 40 GHz. The double shielding of this Fairview cable assembly provides excellent shielding effectiveness of better than 90 dB.

Custom versions of most RF cable assemblies can be built and shipped same day. Custom cable assembly lengths can be obtained by specifying the desired length on the web site at time of order or by contacting a sales representative. Other RF cable assembly value added services including connector orientation or clocking, heat shrink booting and labeling are also available. RF testing can also be performed to document the electrical performance of your cable assembly.

### Electrical Specifications

Description	Min	Typ	Max	Units
Frequency Range	DC		40	GHz
VSWR			1.41:1	
Velocity of Propagation		70		%
RF Shielding	90			dB
Capacitance		29 [95.14]		pF/ft [pF/m]

### Specifications by Frequency

Part Number	Length	Description	F1	F2	F3	F4	F5	Units	Weight (lbs)
			Frequency					MHz	
FMCA9956	Custom Lengths Available	Insertion Loss (Typ.)	0.55	0.8	1.17	1.78	2.77	dB/ft	
			1.81	2.63	3.84	5.84	9.09	dB/m	
FMCA9956-6	6 inch	Insertion Loss (Typ.)	0.5	0.72	1.03	1.52	2.28	dB	0.011
FMCA9956-12	12 inch	Insertion Loss (Typ.)	0.78	1.12	1.62	2.41	3.66	dB	0.013
FMCA9956-18	18 inch	Insertion Loss (Typ.)	1.05	1.52	2.2	3.3	5.05	dB	0.015

The insertion loss data for the base model does not include loss due to the connectors. Each length includes insertion loss due to the connectors.

Loss due to Connector 1: 0.1\*SQRT(FGHz) dB

Loss due to Connector 2: 0.04\*SQRT(FGHz) dB

Base Weight: 0.013 pounds

Additional Weight per Inch: 0.00033 pounds

### Mechanical Specifications

#### Cable Assembly

Weight 0.01411 lbs [6.4 g]

#### Cable

Cable Type FM-P047HF  
 Impedance 50 Ohms  
 Inner Conductor Type Solid  
 Inner Conductor Material and Plating Copper, Silver  
 Dielectric Type PTFE  
 Number of Shields 2  
 Shield Layer 1 Silver Plated Copper Tape  
 Shield Layer 2 Silver Plated Copper Braid  
 Jacket Material FEP, Blue



### Configuration:

- SMPS Female
- 1.85mm Male
- FM-P047HF

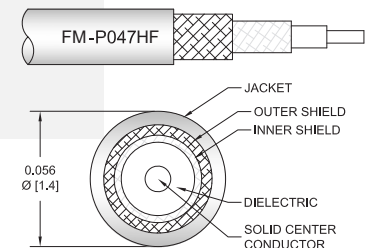
### Features:

- Max Frequency 40 GHz
- Shielding Effectivity > 90 dB
- 70% Phase Velocity
- Double Shielded
- FEP Jacket

### Applications:

- General Purpose
- Laboratory Use
- Scientific research
- High-reliability, high-density for aerospace & defense application
- Ground base station & communication systems, avionics, radar systems

### Cable Diagram:



Fairview Microwave  
 301 Leora Ln., Suite 100  
 Lewisville, TX 75056  
 Tel: 1-800-715-4396 / (972) 649-6678  
 Fax: (972) 649-6689  
[www.fairviewmicrowave.com](http://www.fairviewmicrowave.com)  
[sales@fairviewmicrowave.com](mailto:sales@fairviewmicrowave.com)

Jacket Diameter 0.06 in [1.52 mm]  
Repeated Minimum Bend Radius 0.1 in [2.54 mm]

**Connectors**

Description	Connector 1	Connector 2
Type	SMPS Female Push-on	1.85mm Male Threaded
Impedance	50 Ohms	50 Ohms
Contact Material & Plating	Beryllium Copper, Gold	Beryllium Copper, Gold over Nickel
Contact Plating Spec.	50 µin minimum	50 µin minimum
Dielectric Type	PTFE	PEI
Outer Cond Material & Plating	Beryllium Copper, Gold	
Outer Cond Plating Spec.	50 µin minimum	
Body Material & Plating	Beryllium Copper, Gold	Beryllium Copper, Gold over Nickel
Body Plating Spec.	30 µin minimum	50 µin minimum
Coupling Nut Material & Plating		Passivated Stainless Steel
Coupling Nut Plating Spec.		ASTM-A582

**Environmental Specifications**

**Temperature**  
Operating Range -55 to +165 deg C

**Compliance Certifications** (see [product page](#) for current document)

**Plotted and Other Data**

Notes:

**How to Order**

Part Number Configuration:

**FMCA9956 - xx uu**

cm = Centimeters  
<blank> = Inches  
Length

Example: FMCA9956-12 = 12 inches long cable  
FMCA9956-100cm = 100 cm long cable

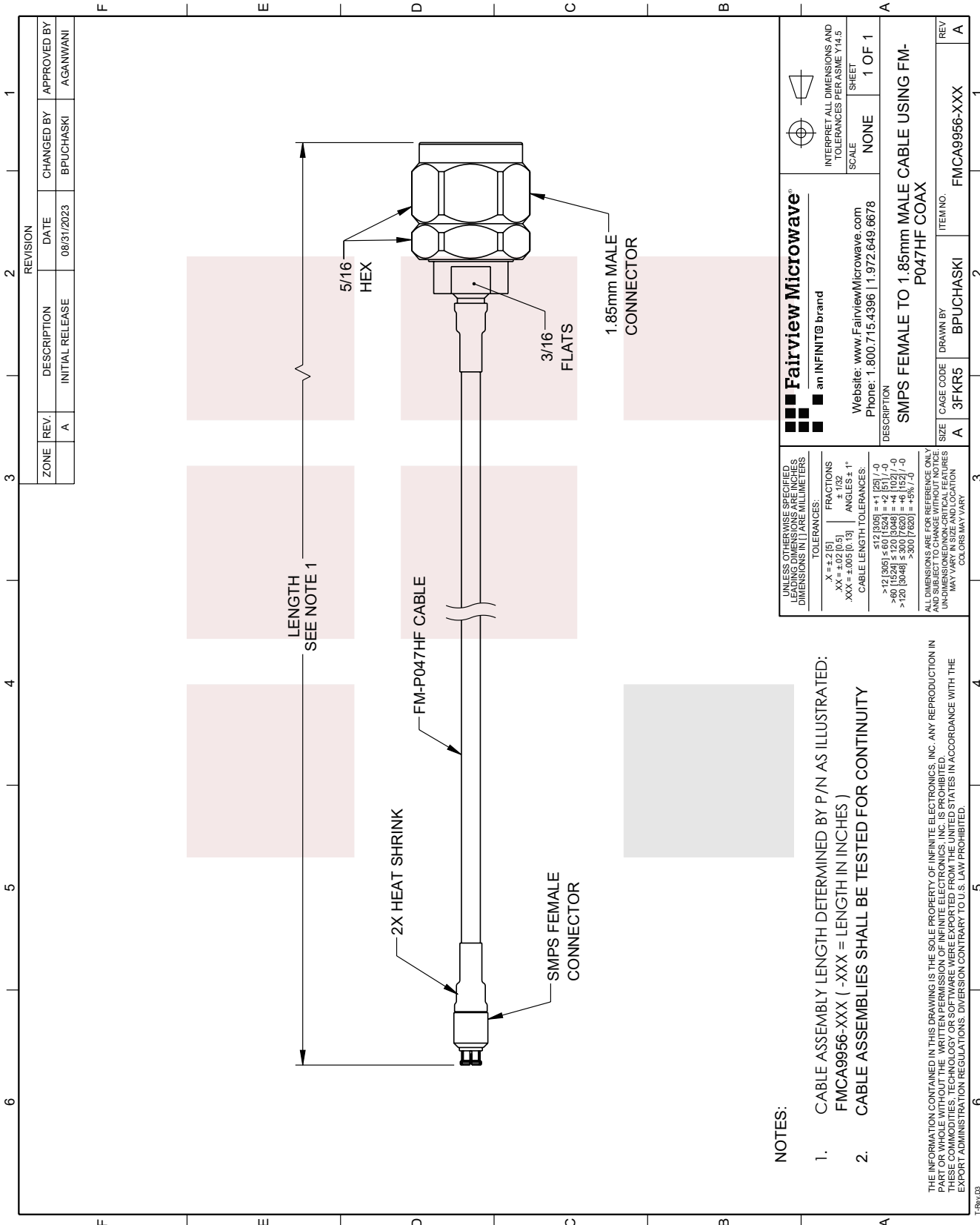
SMPS Female to 1.85mm Male Cable FM-P047HF Coax from Fairview Microwave has same day shipment for domestic and International orders. Our RF, microwave and millimeter wave products maintain a 99% availability and are part of the broadest selection in the industry.

Click the following link to obtain additional part information: [SMPS Female to 1.85mm Male Cable FM-P047HF Coax FMCA9956](#)

URL: <https://www.fairviewmicrowave.com/smps-female-to-1.85mm-male-cable-fm-p047hf-coax-fmca9956-p.aspx>

The information contained in this document is accurate to the best of our knowledge and representative of the part described herein. It may be necessary to make modifications to the part and/or the documentation of the part, in order to implement improvements. Fairview Microwave reserves the right to make such changes as required. Unless otherwise stated, all specifications are nominal. Fairview Microwave does not make any representation or warranty regarding the suitability of the part described herein for any particular purpose, and Fairview Microwave does not assume any liability arising out of the use of any part or documentation.





<b>Fairview Microwave</b> an INFINIT <sup>®</sup> brand Website: <a href="http://www.FairviewMicrowave.com">www.FairviewMicrowave.com</a> Phone: 1.800.715.4396   1.972.649.6678		INTERPRET ALL DIMENSIONS AND TOLERANCES PER ASME Y14.5 SCALE: NONE SHEET: 1 OF 1	
UNLESS OTHERWISE SPECIFIED, LEADING DIMENSIONS ARE IN INCHES DIMENSIONS IN [ ] ARE MILLIMETERS TOLERANCES: .X = ±.2 [5] .XX = ±.02 [0.5] .XXX = ±.005 [0.13] ANGLES ± 1° CABLE LENGTH TOLERANCES: >12 [305] ≤ 60 [1524] = ±.01 [0.25] / -0 >60 [1524] ≤ 120 [3048] = ±.02 [0.51] / -0 >120 [3048] ≤ 300 [7620] = ±.04 [1.02] / -0 >300 [7620] = ±.08 [2.03] / -0		DESCRIPTION <b>SMPS FEMALE TO 1.85mm MALE CABLE USING FM-P047HF COAX</b>	
SIZE: A CAGE CODE: 3FKR5	DRAWN BY: BPUCHASKI	ITEM NO.: FMCA9956-XXX	REV: A

**NOTES:**

- CABLE ASSEMBLY LENGTH DETERMINED BY P/N AS ILLUSTRATED:  
FMCA9956-XXX ( -XXX = LENGTH IN INCHES )
- CABLE ASSEMBLIES SHALL BE TESTED FOR CONTINUITY

THE INFORMATION CONTAINED IN THIS DRAWING IS THE SOLE PROPERTY OF INFINITE ELECTRONICS, INC. ANY REPRODUCTION IN WHOLE OR IN PART FOR ANY PURPOSES WITHOUT THE WRITTEN PERMISSION OF INFINITE ELECTRONICS, INC. IS PROHIBITED. THESE COMMODITY TECHNOLOGY OR SOFTWARE WHEN EXPORTED FROM THE UNITED STATES IN ACCORDANCE WITH THE EXPORT ADMINISTRATION REGULATIONS. DIVERSION CONTRARY TO U.S. LAW PROHIBITED.