

SMA Male to SMA Female Cable RG-188 Coax



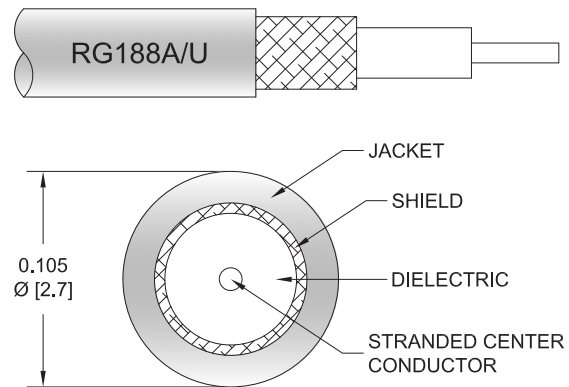
FMCA9993

Configuration

- Connector 1: SMA Male
- Connector 2: SMA Female
- Cable Type: RG-188
- Coax Flex Type: Flexible

Features

- Max Frequency 3 GHz
- PTFE Jacket



Applications

- General Purpose
- Laboratory Use

Description

The SMA male to SMA female cable using RG188 coax, part number FMCA9993, from Fairview Microwave is in-stock and ships same day. This Fairview SMA to SMA cable assembly has a male to female gender configuration with 50 ohm flexible RG-188 coax. Fairview Microwave's flexible RF cable assemblies are ideal for applications where tight bends and continual flexure are required. The FMCA9993 SMA male to SMA female cable assembly operates to 3 GHz.

Custom versions of most RF cable assemblies can be built and shipped same day. Custom cable assembly lengths can be obtained by specifying the desired length on the web site at time of order or by contacting a sales representative. Other RF cable assembly value added services including connector orientation or clocking, heat shrink booting and labeling are also available. RF testing can also be performed to document the electrical performance of your cable assembly.

Electrical Specifications

Description	Minimum	Typical	Maximum	Units
Frequency Range	DC		3	GHz
VSWR			1.4:1	
Operating Voltage (AC)			335	Vrms

Mechanical Specifications

Cable Assembly

Weight 0.032 lbs [14.51 g]

Cable

Cable Type RG-188
Impedance 50 Ohms
Inner Conductor Type Stranded
Inner Conductor Material and Plating Copper Clad Steel, Silver

SMA Male to SMA Female Cable RG-188 Coax



FMCA9993

Dielectric Type	PTFE
Number of Shields	1
Shield Layer 1	Silver Plated Copper Braid
Jacket Material	PTFE, White
Jacket Diameter	0.11 in [2.79 mm]

Connectors

Description	Connector 1	Connector 2
Type	SMA Male	SMA Female
Specification	MIL-STD-348A	MIL-STD-348
Impedance	50 Ohms	50 Ohms
Configuration	Straight	Straight
Contact Material and Plating	Brass, Gold	Beryllium Copper, Gold
Contact Plating Specification	50 µin minimum	
Dielectric Type	PTFE	PTFE
Outer Conductor Material and Plating		Brass, Nickel
Body Material and Plating	Brass, Gold	Brass, Nickel
Body Plating Specification	3 µin minimum	
Coupling Nut Material and Plating	Brass, Gold	
Coupling Nut Plating Specification	3 µin minimum	
Hex Size	5/16 inch	

Environmental Specifications

Operating Range Temperature	-55 to +165 deg C
-----------------------------	-------------------

Compliance Certifications (see [product page](#) for current document)

Plotted and Other Data

Notes:

SMA Male to SMA Female Cable RG-188 Coax



FMCA9993

Typical Performance Data

How to Order

Part Number Configuration:

FMCA9993

- xx

uu

Unit of Measure:
cm = Centimeters
<blank> = Inches
Length
Base Number

Example: FMCA9993-12 = 12 inches long cable
FMCA9993-100cm = 100 cm long cable

SMA Male to SMA Female Cable RG-188 Coax from Fairview Microwave is in-stock and available to ship same-day. All of our RF/microwave products are available off-the-shelf from our ISO 9001:2008 certified facilities in Lewisville, Texas. Fairview Microwave is RF on-demand.

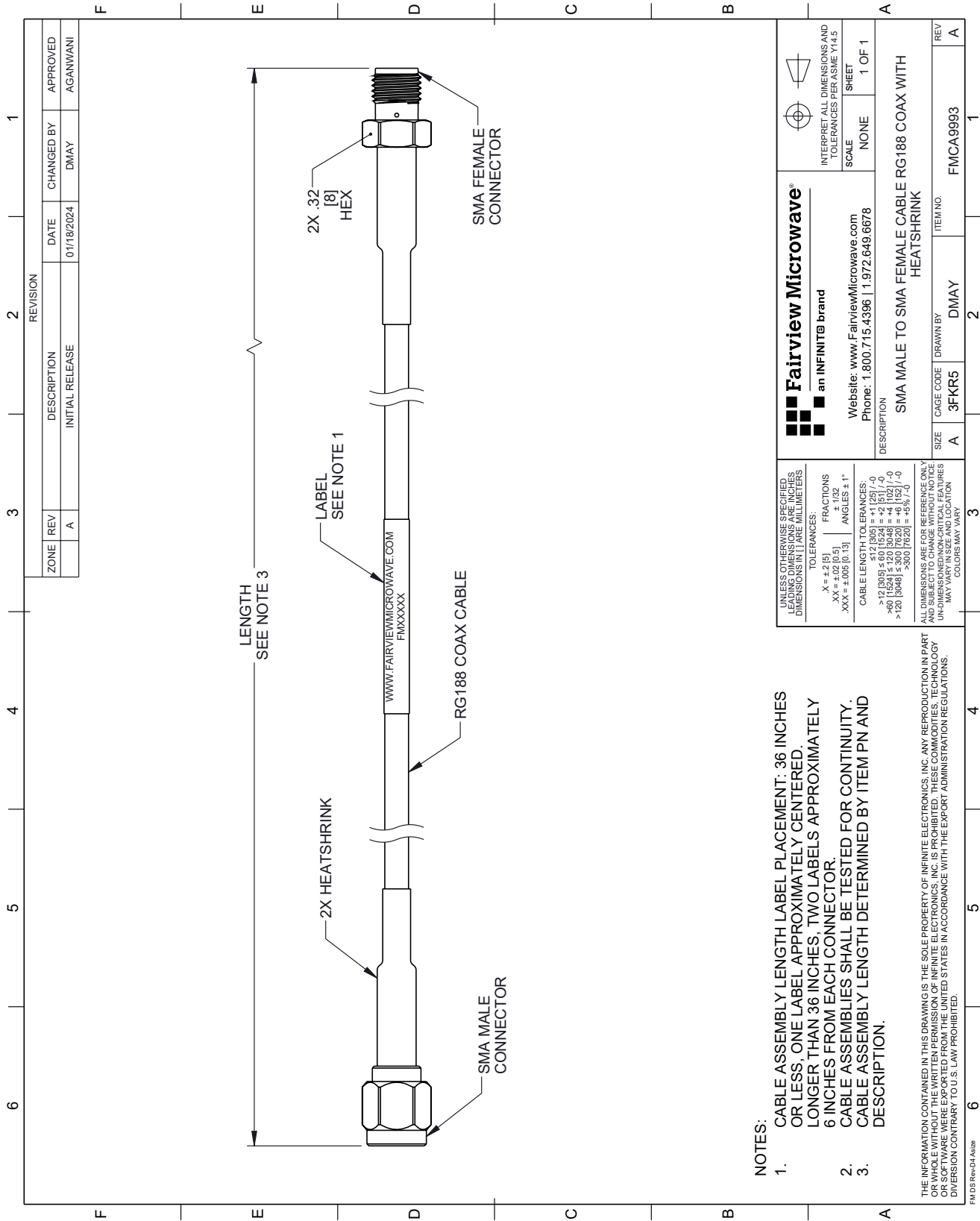
For additional information on this product, please click the following link: [SMA Male to SMA Female Cable RG-188 Coax FMCA9993](#)

URL: <https://www.fairviewmicrowave.com/sma-male-to-sma-female-cable-rg-188-coax-fmca9993-p.aspx>

The information contained within this document is accurate to the best of our knowledge and representative of the part described herein. It may be necessary to make modifications to the part and/or the documentation of the part in order to impliment improvements. Fairview Microwave reserves the right to make such changes as required. Unless otherwise stated, all specifications are nominal. Fairview Microwave does not make any representation or warranty regarding the suitability of the part described herein for any particular purpose, and Fairview Microwave does not assume liability arising out of the use of any part or document.

FMCA9993 CAD Drawing

SMA Male to SMA Female Cable RG-188 Coax



ZONE		REVISION		DATE		CHANGED BY		APPROVED	
A	1	INITIAL RELEASE		01/18/2024	DMAY		AGANWANI		

- NOTES:**
- CABLE ASSEMBLY LENGTH LABEL PLACEMENT: 36 INCHES OR LESS, ONE LABEL APPROXIMATELY CENTERED. LONGER THAN 36 INCHES, TWO LABELS APPROXIMATELY 6 INCHES FROM EACH CONNECTOR.
 - CABLE ASSEMBLIES SHALL BE TESTED FOR CONTINUITY.
 - CABLE ASSEMBLY LENGTH DETERMINED BY ITEM PN AND DESCRIPTION.

THE INFORMATION CONTAINED IN THIS DRAWING IS THE SOLE PROPERTY OF INFINITE ELECTRONICS, INC. ANY REPRODUCTION IN PART OR WHOLE OF THIS DRAWING WITHOUT THE WRITTEN PERMISSION OF INFINITE ELECTRONICS, INC. IS PROHIBITED. ALL DIMENSIONS UNLESS OTHERWISE SPECIFIED ARE IN INCHES. DIMENSIONS IN PARENTHESES ARE IN MILLIMETERS. UNLESS OTHERWISE SPECIFIED, DIMENSIONS IN PARENTHESES ARE IN MILLIMETERS.

TOLERANCES:	
.X = ±.2 (51)	FRACTIONS ± 1/32
.XX = ±.02 (0.51)	ANGLES ± 1°
.XXX = ±.005 (0.13)	

UNLESS OTHERWISE SPECIFIED, DIMENSIONS IN PARENTHESES ARE IN MILLIMETERS.

Fairview Microwave®
an INFINIT® brand

Website: www.FairviewMicrowave.com
Phone: 1.800.715.4396 | 1.972.649.6678

INTERPRET ALL DIMENSIONS AND TOLERANCES PER ASME Y14.5	
SCALE	NONE
SHEET	1 OF 1

SIZE	CAGE CODE	DRAWN BY	ITEM NO.	REV
A	3FKR5	DMAY	FMCA9993	A

FM DS Rev-D-As28