

4.3-10 Female (Jack) Bulkhead Low PIM Connector for FM-1/4SFHC, SPP-250-LLPL, SPO-250, SPF-250 Cable, Solder



FMCN1697

Configuration

- 4.3-10 Female Connector
- 50 Ohms
- Straight Body Geometry
- Connector Interface Types: FM-1/4SFHC, SPP-250-LLPL, SPO-250, SPF-250
- Bulkhead
- Low PIM Design

Features

- Operating Frequency of 6 GHz Max.
- PIM levels better than -160 dBc
- Silver Plated Bronze Contact

Applications

- General Purpose Test
- Rack and Panel Mount Applications
- Wireless Communications
- Custom Cable Assemblies
- Low PIM Applications

Description

4.3-10 Female Bulkhead Low PIM Bulkhead Connector Solder/Solder Attachment for FM-1/4SFHC, SPP-250-LLPL, SPO-250 and SPF-250 Cable, part number FMCN1697, from Fairview Microwave is in-stock and ships same day. This 4.3-10 female connector operates up to a maximum frequency of 6 GHz. The 4.3-10 female connector also has low passive intermodulation (PIM) of -160 dBc. Fairview's FMCN1697 bulkhead 4.3-10 connector enables designers to make external connections on product enclosures, and can be used in a variety of other rack mount and panel mount applications.

Fairview's 4.3-10 female bulkhead connector FMCN1697 datasheet specifications and outline drawing are shown in this PDF below. Our extensive offering of RF, microwave and millimeter wave connectors allows designers to configure and customize their signal connections however they like. From providing an I/O for a board design to creating a custom cable assembly configuration, Fairview Microwave has a connector solution to meet your needs. Fairview Microwave also has the expertise to build your custom cable assemblies for you and ship them same-day.

Electrical Specifications

Description	Minimum	Typical	Maximum	Units
Frequency Range	DC		6	GHz
Passive Intermodulation			-160	dBc
Dielectric Withstanding Voltage (AC)			1,000	Vrms
Impedance		50		Ohms

Performance by Frequency

Description	F1	F2	F3	F4	F5	Units
Frequency Range	DC to 3	3 to 6				GHz
VSWR, Max	1.2:1	1.35:1				

Mechanical Specifications

Size

Length	1.3 in [33.02 mm]
Width	1.02 in [25.91 mm]

4.3-10 Female (Jack) Bulkhead Low PIM Connector for FM-1/4SFHC, SPP-250-LLPL, SPO-250, SPF-250 Cable, Solder



FMCN1697

Height	1.02 in [25.91 mm]
Weight	0.07 lbs [31.75 g]

Material Specifications

Description	Material	Plating
Contact	Bronze	Silver
Insulation	PTFE	
Outer Conductor	Bronze	Tri-Metal
Body	Brass	Tri-Metal

Mechanical Specification Notes:
Interface Conforms to IEC 61169-54

Environmental Specifications

Temperature	
Operating Range	-40 to +155 deg C

Compliance Certifications (see [product page](#) for current document)

Plotted and Other Data

Notes:

4.3-10 Female (Jack) Bulkhead Low PIM Connector for FM-1/4SFHC, SPP-250-LLPL, SPO-250, SPF-250 Cable, Solder from Fairview Microwave is in-stock and available to ship same-day. All of our RF/microwave products are available off-the-shelf from our ISO 9001:2008 certified facilities in Lewisville, Texas. Fairview Microwave is RF on-demand.

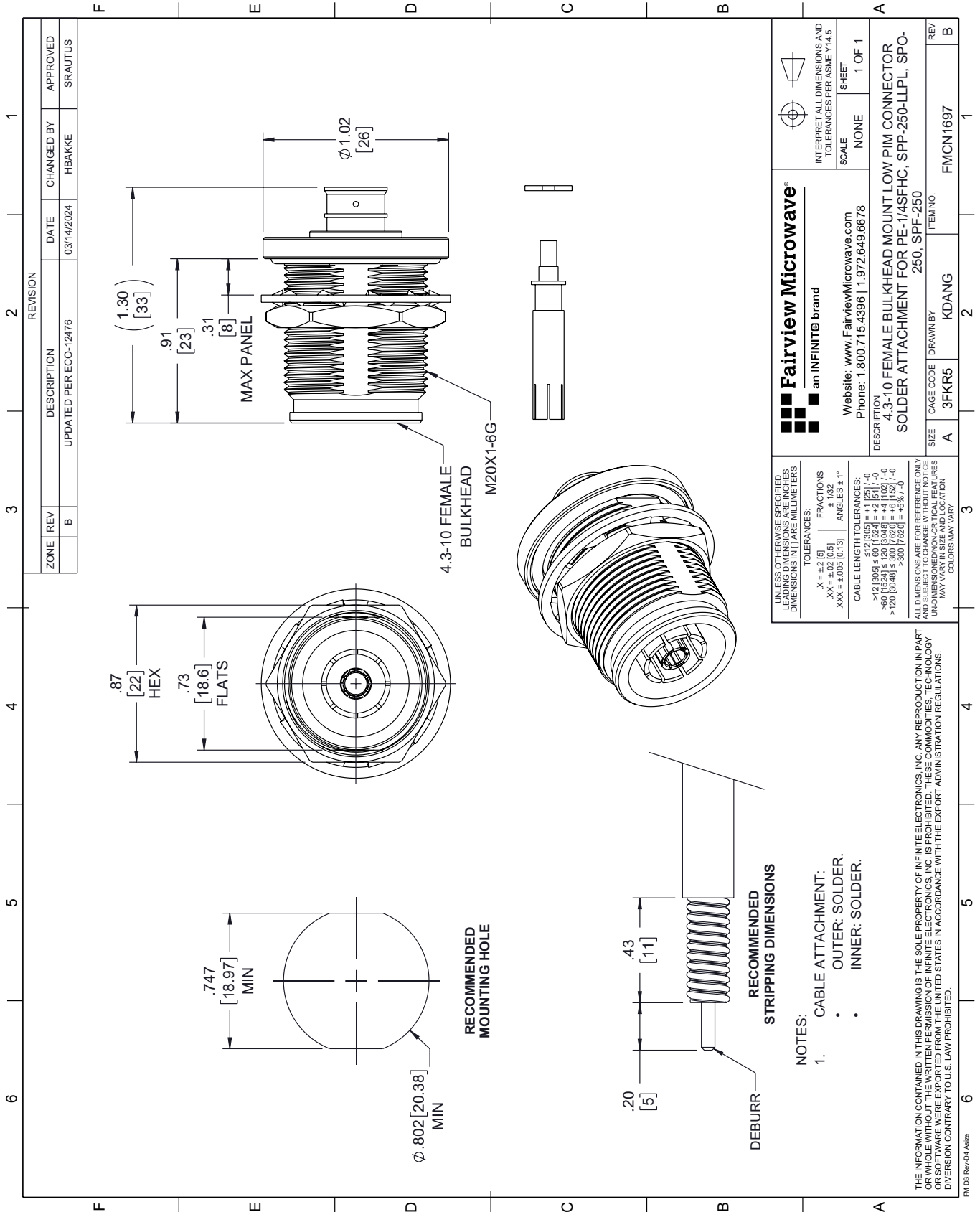
For additional information on this product, please click the following link: [4.3-10 Female \(Jack\) Bulkhead Low PIM Connector for FM-1/4SFHC, SPP-250-LLPL, SPO-250, SPF-250 Cable, Solder FMCN1697](#)

URL: <https://www.fairviewmicrowave.com/4.3-10-female-spp-250-llpl-spo-250-spf-250-connector-fmcn1697-p.aspx>

The information contained within this document is accurate to the best of our knowledge and representative of the part described herein. It may be necessary to make modifications to the part and/or the documentation of the part in order to implement improvements. Fairview Microwave reserves the right to make such changes as required. Unless otherwise stated, all specifications are nominal. Fairview Microwave does not make any representation or warranty regarding the suitability of the part described herein for any particular purpose, and Fairview Microwave does not assume liability arising out of the use of any part or document.

FMCN1697 CAD Drawing

4.3-10 Female (Jack) Bulkhead Low PIM Connector for FM-1/4SFHC, SPP-250-LLPL, SPO-250, SPF-250 Cable, Solder



ZONE	REV	DESCRIPTION	DATE	CHANGED BY	APPROVED
	B	UPDATED PER ECO-12476	03/14/2024	HBAKKE	SRAUTUS

Fairview Microwave®
an INFINITI® brand

Website: www.FairviewMicrowave.com
Phone: 1.800.715.4396 | 1.972.649.6678

UNLESS OTHERWISE SPECIFIED, LEADING DIMENSIONS ARE IN INCHES. DIMENSIONS IN [] ARE MILLIMETERS.

TOLERANCES:
 .X = ±.2 [5]
 .XX = ±.02 [0.5]
 .XXX = ±.005 [0.13]

FRACTIONS
 ± 1/32
 ANGLES ± 1°

CABLE LENGTH TOLERANCES:
 >12 [305] ≤ 60 [1524] = ±.1 [2.5] / -0
 >60 [1524] ≤ 120 [3048] = ±.4 [10.2] / -0
 >120 [3048] ≤ 300 [7620] = ±.6 [15.2] / -0

ALL DIMENSIONS ARE FOR REFERENCE ONLY. UNLESS OTHERWISE SPECIFIED, DIMENSIONS MAY VARY IN SIZE AND LOCATION. COLORS MAY VARY.

INTERPRET ALL DIMENSIONS AND TOLERANCES PER ASME Y14.5

SCALE: NONE
SHEET: 1 OF 1

DESCRIPTION: 4.3-10 FEMALE BULKHEAD MOUNT LOW PIM CONNECTOR SOLDER ATTACHMENT FOR PE-1/4SFHC, SPP-250-LLPL, SPO-250, SPF-250

REV	B
ITEM NO.	FMCN1697
CAGE CODE	3FKR5
DRAWN BY	KDANG
SIZE	250, SPF-250

THE INFORMATION CONTAINED IN THIS DRAWING IS THE SOLE PROPERTY OF INFINITE ELECTRONICS, INC. ANY REPRODUCTION IN PART OR WHOLE WITHOUT THE WRITTEN PERMISSION OF INFINITE ELECTRONICS, INC. IS PROHIBITED. THESE COMMODITIES, TECHNOLOGY OR SOFTWARE WERE EXPORTED FROM THE UNITED STATES IN ACCORDANCE WITH THE EXPORT ADMINISTRATION REGULATIONS. DIVISION CONTRARY TO U.S. LAW PROHIBITED.

FM DS Rev-D4 Alt2