

**RF PCB Connector, 75 Ohm F Female Connector
Solder Attachment Thru Hole PCB, .320 inch x
.091 inch Hole Spacing**

75 Ohm type F female connector with solder attachment for thru hole PCB (.320 inch x .091 inch hole spacing), part number FMCN44211, from Fairview Microwave is in-stock and ships same day.

Fairview's 75 ohm type F female connector FMCN44211 datasheet specifications and outline drawing are shown in this PDF below. Our extensive offering of RF, microwave and millimeter wave connectors allows designers to configure and customize their signal connections however they like. From providing an I/O for a board design to creating a custom cable assembly configuration, Fairview Microwave has a connector solution to meet your needs. Fairview Microwave also has the expertise to build your custom cable assemblies for you and ship them same-day.

Mechanical Specifications

Size	
Length	1.04 in [26.42 mm]
Width/Dia.	0.374 in [9.50 mm]
Height	0.374 in [9.5 mm]
Weight	0.014 lbs [6.35 g]

Material Specifications

Description	Material	Plating
Contact	Brass	Tin
Body	Brass	Nickel

Compliance Certifications (see [product page](#) for current document)

Plotted and Other Data

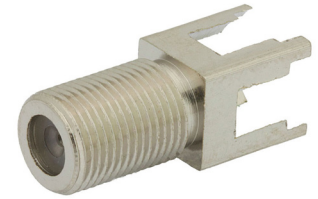
Notes:

RF PCB Connector, 75 Ohm F Female Connector Solder Attachment Thru Hole PCB, .320 inch x .091 inch Hole Spacing from Fairview Microwave is in-stock and available to ship same-day. All of our RF/microwave products are available off-the-shelf from our ISO 9001:2008 certified facilities in Lewisville, Texas. Fairview Microwave is RF on-demand.

For additional information on this product, please click the following link: [RF PCB Connector, 75 Ohm F Female Connector Solder Attachment Thru Hole PCB, .320 inch x .091 inch Hole Spacing FMCN44211](#)

URL: <https://www.fairviewmicrowave.com/f-female-standard-thru-hole-pcb-connector-fmcn44211-p.aspx>

The information contained in this document is accurate to the best of our knowledge and representative of the part described herein. It may be necessary to make modifications to the part and/or the documentation of the part, in order to implement improvements. Fairview Microwave reserves the right to make such changes as required. Unless otherwise stated, all specifications are nominal. Fairview Microwave does not make any representation or warranty regarding the suitability of the part described herein for any particular purpose, and Fairview Microwave does not assume any liability arising out of the use of any part or documentation.


Configuration:

- F Female Connector
- 75 Ohms
- Straight Body Geometry
- Thru Hole Interface Type
- Solder Attachment

Features:

- Tin Plated Brass Contact

Applications:

- General Purpose Test
- PCB Applications
- CATV

Fairview Microwave
301 Leora Ln., Suite 100
Lewisville, TX 75056
Tel: 1-800-715-4396 / (972) 649-6678
Fax: (972) 649-6689
www.fairviewmicrowave.com
sales@fairviewmicrowave.com

