

RF PCB Connector, BNC Female Connector Solder Attachment End Launch PCB

BNC female connector with solder attachment for end launch PCB, part number FMCN44232, from Fairview Microwave is in-stock and ships same day. This BNC female connector operates up to a maximum frequency of 4 GHz and offers excellent VSWR of 1.15:1.

Fairview's BNC female connector FMCN44232 datasheet specifications and outline drawing are shown in this PDF below. Our extensive offering of RF, microwave and millimeter wave connectors allows designers to configure and customize their signal connections however they like. From providing an I/O for a board design to creating a custom cable assembly configuration, Fairview Microwave has a connector solution to meet your needs. Fairview Microwave also has the expertise to build your custom cable assemblies for you and ship them same-day.

Electrical Specifications

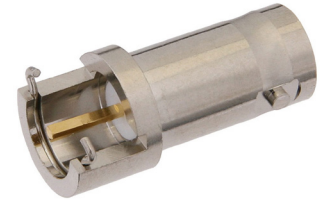
Description	Min	Typ	Max	Units
Frequency Range	DC		4	GHz
VSWR			1.15:1	
Insertion Loss			0.2	dB
Operating Voltage (AC)			500	Vrms
DWV (AC)			1,500	Vrms
Inner Cond. DC Resistance			1.5	mOhms
Outer Cond. DC Resistance			0.2	mOhms
Insulation Resistance	5,000			MOhms

Mechanical Specifications

Size	
Length	1.022 in [25.96 mm]
Width/Dia.	0.472 in [11.99 mm]
Height	0.472 in [11.99 mm]
Weight	0.2 lbs [90.72 g]
Mating Cycles	500 Cycles

Material Specifications

Description	Material	Plating
Contact	Brass	Gold
Insulation	PTFE	
Body	Brass	Nickel



Configuration:

- BNC Female Connector
- 50 Ohms
- Straight Body Geometry
- End Launch Interface Type
- Solder Attachment

Features:

- Operating Frequency of 4 GHz Max.
- Excellent VSWR of 1.15:1
- Gold Plated Brass Contact

Applications:

- General Purpose Test
- PCB Applications

Fairview Microwave
301 Leora Ln., Suite 100
Lewisville, TX 75056
Tel: 1-800-715-4396 / (972) 649-6678
Fax: (972) 649-6689
www.fairviewmicrowave.com
sales@fairviewmicrowave.com

Environmental Specifications

Temperature

Operating Range -65 to +165 deg C

Compliance Certifications (see [product page](#) for current document)

Plotted and Other Data

Notes:

RF PCB Connector, BNC Female Connector Solder Attachment End Launch PCB from Fairview Microwave is in-stock and available to ship same-day. All of our RF/microwave products are available off-the-shelf from our ISO 9001:2008 certified facilities in Lewisville, Texas. Fairview Microwave is RF on-demand.

For additional information on this product, please click the following link: [RF PCB Connector, BNC Female Connector Solder Attachment End Launch PCB FMCN44232](#)

URL: <https://www.fairviewmicrowave.com/bnc-female-end-launch-pcb-connector-fmcn44232-p.aspx>

The information contained in this document is accurate to the best of our knowledge and representative of the part described herein. It may be necessary to make modifications to the part and/or the documentation of the part, in order to implement improvements. Fairview Microwave reserves the right to make such changes as required. Unless otherwise stated, all specifications are nominal. Fairview Microwave does not make any representation or warranty regarding the suitability of the part described herein for any particular purpose, and Fairview Microwave does not assume any liability arising out of the use of any part or documentation.

