

RF PCB Connector, SMPS Male (Plug) PCB Solder-In Connector, Smooth Bore

SMPS Male Standard Smooth Bore Connector Solder Attachment, part number FMCN45896, from Fairview Microwave is in-stock and ships same day. This SMPS male connector operates up to a maximum frequency of 65 GHz.

Fairview's SMPS male connector FMCN45896 datasheet specifications and outline drawing are shown in this PDF below. Our extensive offering of RF, microwave and millimeter wave connectors allows designers to configure and customize their signal connections however they like. From providing an I/O for a board design to creating a custom cable assembly configuration, Fairview Microwave has a connector solution to meet your needs. Fairview Microwave also has the expertise to build your custom cable assemblies for you and ship them same-day.

Electrical Specifications

Description	Min	Typ	Max	Units
Frequency Range	DC		65	GHz

Mechanical Specifications

Size	
Length	0.143 in [3.63 mm]
Width/Dia.	0.09 in [2.29 mm]
Height	0.09 in [2.29 mm]
Weight	0.00022 lbs [0.1 g]

Material Specifications

Description	Material	Plating
Contact	Beryllium Copper	Gold 50 µin minimum
Body	Beryllium Copper	Gold 50 µin minimum

Environmental Specifications

Temperature	
Operating Range	-55 to +165 deg C
Humidity	MIL-STD-202, Method 106, Less Step 7B
Shock	MIL-STD-202, Method 213, Condition I
Vibration	MIL-STD-202, Method 204, Condition D
Thermal Shock	MIL-STD-202, Method 107, Condition B

Compliance Certifications (see [product page](#) for current document)

Plotted and Other Data

Notes:



Configuration:

- Smooth Bore SMPS Male Connector
- 50 Ohms
- straight Body Geometry
- Solder Attachment

Features:

- Operating Frequency of 65 GHz Max.
- Gold Plated Beryllium Copper Contact
- 50 µin minimum contact plating

Applications:

- General Purpose Test
- PCB Applications

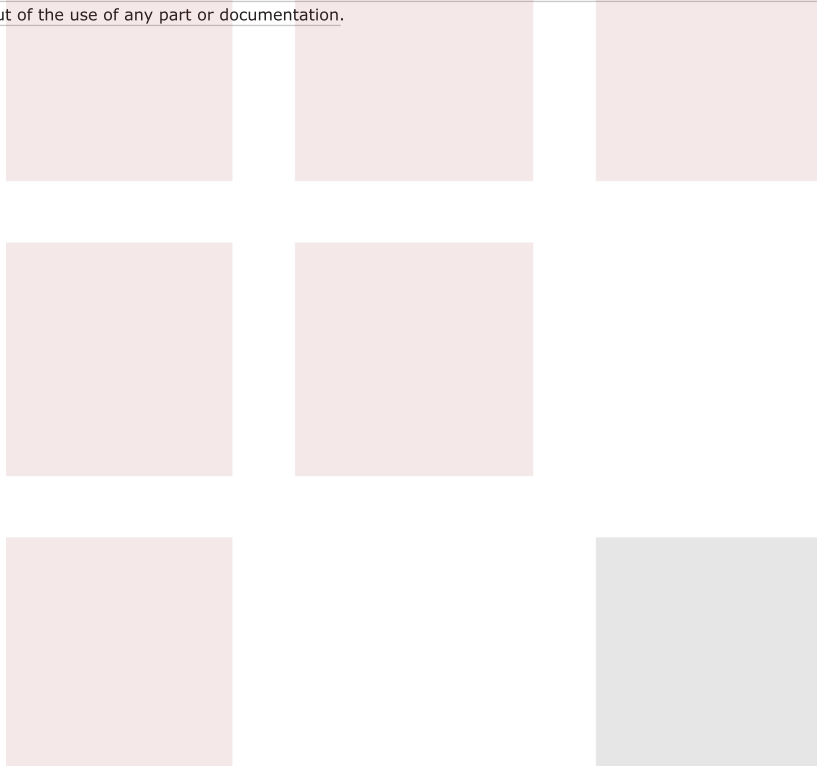
Fairview Microwave
 301 Leora Ln., Suite 100
 Lewisville, TX 75056
 Tel: 1-800-715-4396 / (972) 649-6678
 Fax: (972) 649-6689
www.fairviewmicrowave.com
sales@fairviewmicrowave.com

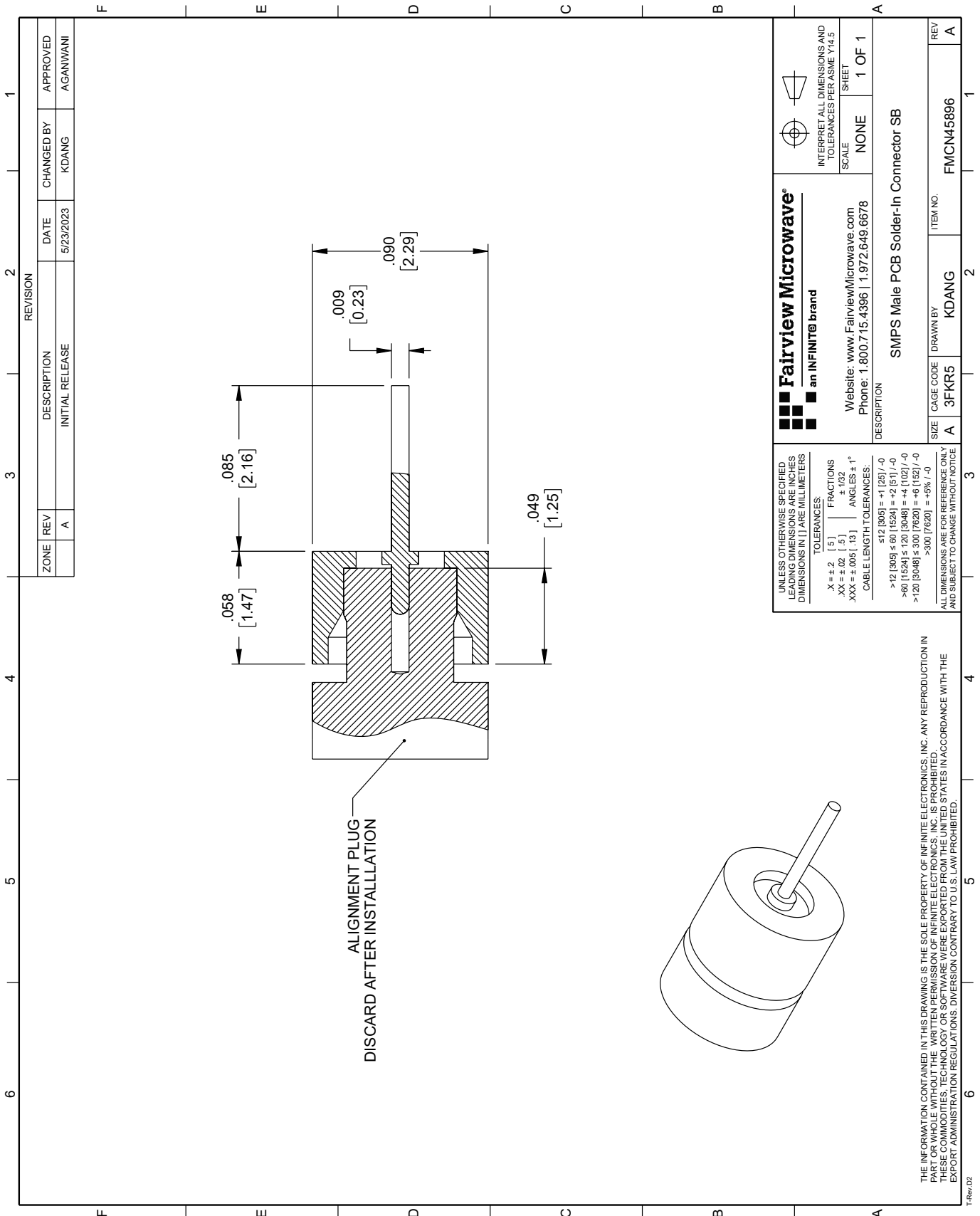
RF PCB Connector, SMPS Male (Plug) PCB Solder-In Connector, Smooth Bore from Fairview Microwave is in-stock and available to ship same-day. All of our RF/microwave products are available off-the-shelf from our ISO 9001:2008 certified facilities in Lewisville, Texas. Fairview Microwave is RF on-demand.

For additional information on this product, please click the following link: [RF PCB Connector, SMPS Male \(Plug\) PCB Solder-In Connector, Smooth Bore FMCN45896](#)

URL: <https://www.fairviewmicrowave.com/smps-male-smooth-bore-pcb-connector-fmcn45896-p.aspx>

The information contained in this document is accurate to the best of our knowledge and representative of the part described herein. It may be necessary to make modifications to the part and/or the documentation of the part, in order to implement improvements. Fairview Microwave reserves the right to make such changes as required. Unless otherwise stated, all specifications are nominal. Fairview Microwave does not make any representation or warranty regarding the suitability of the part described herein for any particular purpose, and Fairview Microwave does not assume any liability arising out of the use of any part or documentation.





ZONE		REVISION		DATE		CHANGED BY		APPROVED	
A		INITIAL RELEASE		5/23/2023	KDANG		AGANWANI		

<p>Fairview Microwave[®] an INFINIT[®] brand</p> <p>Website: www.FairviewMicrowave.com Phone: 1.800.715.4396 1.972.649.6678</p>		<p>INTERPRET ALL DIMENSIONS AND TOLERANCES PER ASME Y14.5</p> <p>SCALE: NONE</p> <p>SHEET: 1 OF 1</p>	
DESCRIPTION: SMPS Male PCB Solder-In Connector SB			
SIZE: A	CAGE CODE: 3FKR5	DRAWN BY: KDANG	ITEM NO.: FMCN45896
REV: A			

UNLESS OTHERWISE SPECIFIED, LEADING DIMENSIONS ARE INCHES DIMENSIONS IN [] ARE MILLIMETERS

TOLERANCES:

.X = ± .2	[5]	FRACTIONS	± 1/32
.XX = ± .02	[.5]	ANGLES ± 1°	
.XXX = ± .005	[.13]	CABLE LENGTH TOLERANCES:	

512 (305) = +1 (25) / -0
 >12 (305) ≤ 60 (1524) = +2 (51) / -0
 >60 (1524) ≤ 120 (3048) = +4 (102) / -0
 >120 (3048) ≤ 300 (7620) = +6 (152) / -0
 >300 (7620) = +5% / -0

ALL DIMENSIONS ARE FOR REFERENCE ONLY AND SUBJECT TO CHANGE WITHOUT NOTICE

THE INFORMATION CONTAINED IN THIS DRAWING IS THE SOLE PROPERTY OF INFINITE ELECTRONICS, INC. ANY REPRODUCTION IN PART OR WHOLE WITHOUT THE WRITTEN PERMISSION OF INFINITE ELECTRONICS, INC. IS PROHIBITED. THESE COMMODITIES, TECHNOLOGY OR SOFTWARE WERE EXPORTED FROM THE UNITED STATES IN ACCORDANCE WITH THE EXPORT ADMINISTRATION REGULATIONS. DIVERSION CONTRARY TO U.S. LAW PROHIBITED.