

C Male Connector Clamp/Solder Attachment for RG213, RG214, RG8, RG9, RG11, RG225, RG393, RG144, RG216, RG215 Cable High Voltage

FMCN45903 C male coax connector has an interface type of C male which is compatible with RG213, RG214, RG8, RG9, RG11, RG225, RG393, RG144, RG216 and RG215 cables and has a 50 Ohms impedance. Fairview Microwave's C male connector uses clamp/solder as an attachment method.

The Fairview Microwave C male coax connector has a PTFE dielectric type. Fairview Microwave's C coax connector has a brass body with nickel plating. Additional RF connector specs and dimensions for this component can be found on its PDF specification datasheet and CAD drawings above.

This C male RF connector with coax termination is designed to be used with RG213, RG214, RG8, RG9, RG11, RG225, RG393, RG144, RG216 and RG215 cables. Our high-quality FMCN45902 connector features a QQ-N-290 body plating specification. This C connector has a silver inner contact plating.

This Fairview Microwave male C connector will ship the same business day as purchased. Our C male connector is part of over 40,000 RF, microwave, and millimeter wave components in stock for worldwide shipment. For further information on similar products, our expert technical support and trained sales team can get you the ideal RF connector as per your requirements.

Mechanical Specifications

Size

Length	1.8 in [45.72 mm]
Width/Dia.	0.75 in [19.05 mm]
Height	0.75 in [19.05 mm]
Weight	0.136 lbs [61.69 g]

Material Specifications

Description	Material	Plating
Contact		Silver QQ-S-365
Insulation	PTFE	
Body	Brass	Nickel QQ-N-290
Coupling Nut	Brass	Nickel QQ-N-290

Compliance Certifications (see [product page](#) for current document)

Plotted and Other Data

Notes:



Configuration:

- C Male Connector
- MIL-STD-348
- 50 Ohms
- Straight Body Geometry
- RG213, RG214, RG8, RG9, RG11, RG225, RG393, RG144, RG216, RG215 Interface Type
- Clamp/Solder Attachment

Features:

- Silver Plated Contact
- Contact plating according to QQ-S-365

Applications:

- General Purpose Test
- Custom Cable Assemblies

Fairview Microwave
301 Leora Ln., Suite 100
Lewisville, TX 75056
Tel: 1-800-715-4396 / (972) 649-6678
Fax: (972) 649-6689
www.fairviewmicrowave.com
sales@fairviewmicrowave.com

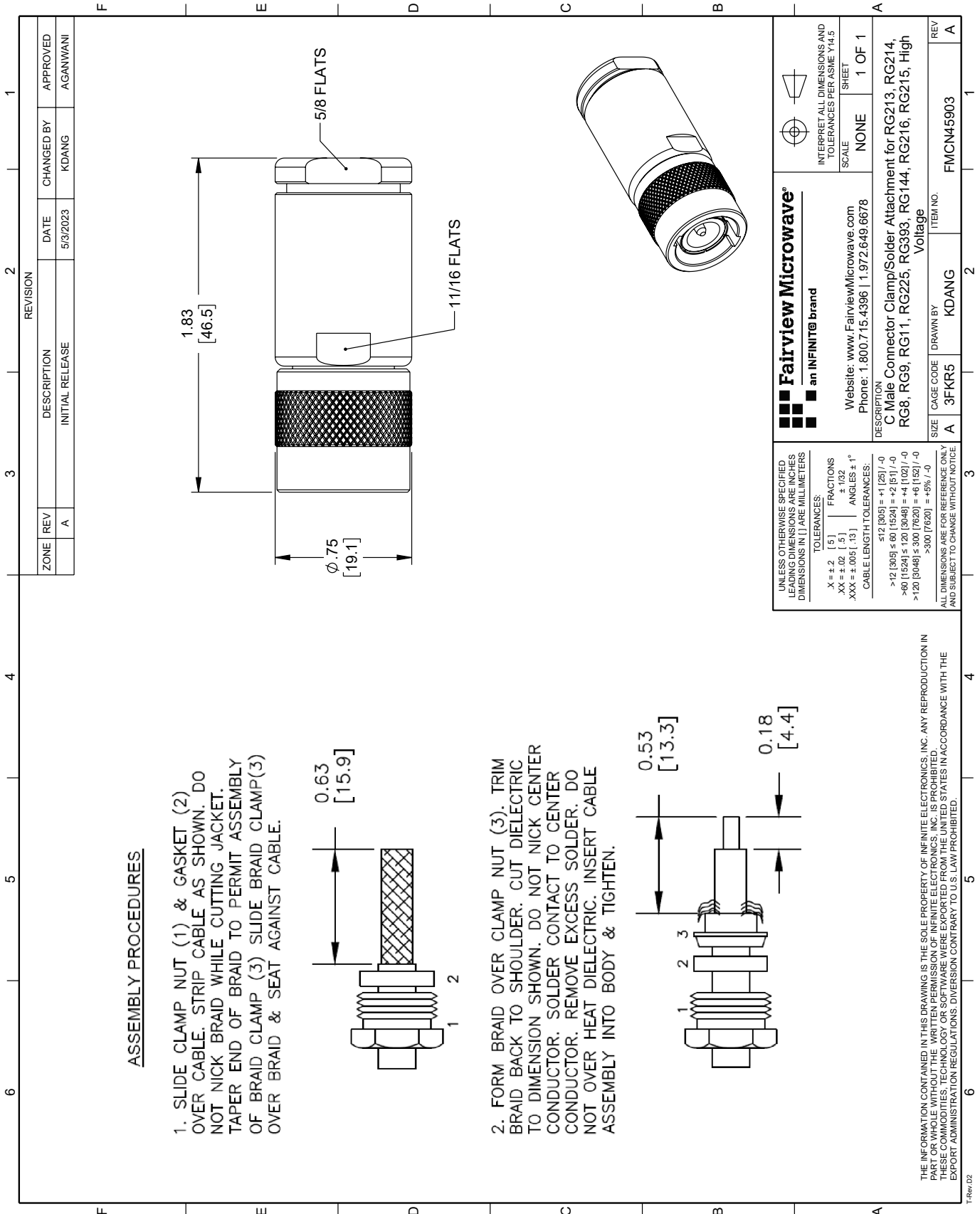
C Male Connector Clamp/Solder Attachment for RG213, RG214, RG8, RG9, RG11, RG225, RG393, RG144, RG216, RG215 Cable High Voltage from Fairview Microwave is in-stock and available to ship same-day. All of our RF/microwave products are available off-the-shelf from our ISO 9001:2008 certified facilities in Lewisville, Texas. Fairview Microwave is RF on-demand.

For additional information on this product, please click the following link: [C Male Connector Clamp/Solder Attachment for RG213, RG214, RG8, RG9, RG11, RG225, RG393, RG144, RG216, RG215 Cable High Voltage FMCN45903](#)

URL: <https://www.fairviewmicrowave.com/c-male-rg213-rg214-rg8-rg9-rg11-rg225-rg393-rg144-rg216-rg215-connector-fmcn45903-p.aspx>

The information contained in this document is accurate to the best of our knowledge and representative of the part described herein. It may be necessary to make modifications to the part and/or the documentation of the part, in order to implement improvements. Fairview Microwave reserves the right to make such changes as required. Unless otherwise stated, all specifications are nominal. Fairview Microwave does not make any representation or warranty regarding the suitability of the part described herein for any particular purpose, and Fairview Microwave does not assume any liability arising out of the use of any part or documentation.





ZONE		REVISION		DATE		CHANGED BY		APPROVED	
A		INITIAL RELEASE		5/3/2023	KDANG		AGANWANI		

<p>Fairview Microwave an INFINIT[®] brand</p> <p>Website: www.FairviewMicrowave.com Phone: 1.800.715.4396 1.972.649.6678</p>		<p>INTERPRET ALL DIMENSIONS AND TOLERANCES PER ASME Y14.5</p> <p>SCALE: NONE</p> <p>SHEET: 1 OF 1</p>	
<p>DESCRIPTION: C Male Connector Clamp/Solder Attachment for RG213, RG214, RG8, RG9, RG11, RG225, RG393, RG144, RG216, RG215, High Voltage</p>			
SIZE	CAGE CODE	DRAWN BY	ITEM NO.
A	3FKR5	KDANG	FMCN45903

UNLESS OTHERWISE SPECIFIED LEADING DIMENSIONS ARE INCHES DIMENSIONS IN [] ARE MILLIMETERS

TOLERANCES:

.X ± .2 [.5] FRACTIONS
 .XX ± .02 [.5] ± .132 ANGLES ± 1°
 .XXX ± .005 [.13]

CABLE LENGTH TOLERANCES:

≤ 12 [305] ≤ +1 [25] / -0
 > 12 [305] ≤ 60 [1524] = +2 [51] / -0
 > 60 [1524] ≤ 120 [3048] = +4 [102] / -0
 > 120 [3048] ≤ 300 [7620] = +6 [152] / -0
 > 300 [7620] = +5% / -0

ALL DIMENSIONS ARE FOR REFERENCE ONLY AND SUBJECT TO CHANGE WITHOUT NOTICE

THE INFORMATION CONTAINED IN THIS DRAWING IS THE SOLE PROPERTY OF INFINITE ELECTRONICS, INC. ANY REPRODUCTION IN PART OR WHOLE WITHOUT THE WRITTEN PERMISSION OF INFINITE ELECTRONICS, INC. IS PROHIBITED. THESE COMMODITIES, TECHNOLOGY OR SOFTWARE WERE EXPORTED FROM THE UNITED STATES IN ACCORDANCE WITH THE EXPORT ADMINISTRATION REGULATIONS. DIVERSION CONTRARY TO U.S. LAW PROHIBITED.