

Mini SMP (SMPM) VITA 67.3 10 Port Plug-In Module C

Fairview Microwave's FMCN49823 10-position block housing is part of our full line of VITA 67.3 Plug-In solutions and is available for same-day shipping. These blocks are machined for a rugged solution. The blocks are designed to accept both FMCN49819 (.047" cable contact) and FMCN49820 (.086" cable contact) in flexible or semi-rigid cables. These blocks are ideal for blind mating daughtercards to motherboards as the RF contacts provide +/- .010" radial misalignment tolerance and have excellent return loss up to 40 GHz.

The SMPM (Mini-SMP) blind mate connector is ideal for applications where direct visual or tactile access to the connection point is not possible, for example, when two circuit boards need to be mated.

Our SMPM (Mini-SMP) block FMCN49823 specifications and drawing with dimensions are shown below in this PDF. Fairview Microwave's broad catalog of RF, microwave and millimeter wave connectors allows designers to configure and customize their signal connections however they like. Whether the need is to provide an I/O for a board design, or simply create a custom cable assembly configuration, Fairview Microwave has the right connector for the job. Fairview Microwave can also expertly build your custom cable assemblies for you and ship same-day.

Mechanical Specifications

Size

Length	1.02 in [25.91 mm]
Width/Dia.	0.78 in [19.81 mm]
Height	0.5 in [12.7 mm]
Weight	0.0229 lbs [10.39 g]
Mating Cycles	500 Cycles

Material Specifications

Description	Material	Plating
Body	Aluminum	Chem Film

Environmental Specifications

Temperature

Operating Range	-65 to +165 deg C
-----------------	-------------------

Compliance Certifications (see [product page](#) for current document)

Plotted and Other Data

Notes:



Configuration:

- Mini SMP Connector
- 50 Ohms
- Straight Body Geometry
- VITA 67.3 Design

Features:

- Blind Mate Connector
- Rugged Aluminum construction
- Accepts 0.047" and 0.086" cable contacts for end-to-end solution

Applications:

- General Purpose Test
- VITA 67.3 Backplane
- High Density Applications
- Robust and rugged high speed cabled solution

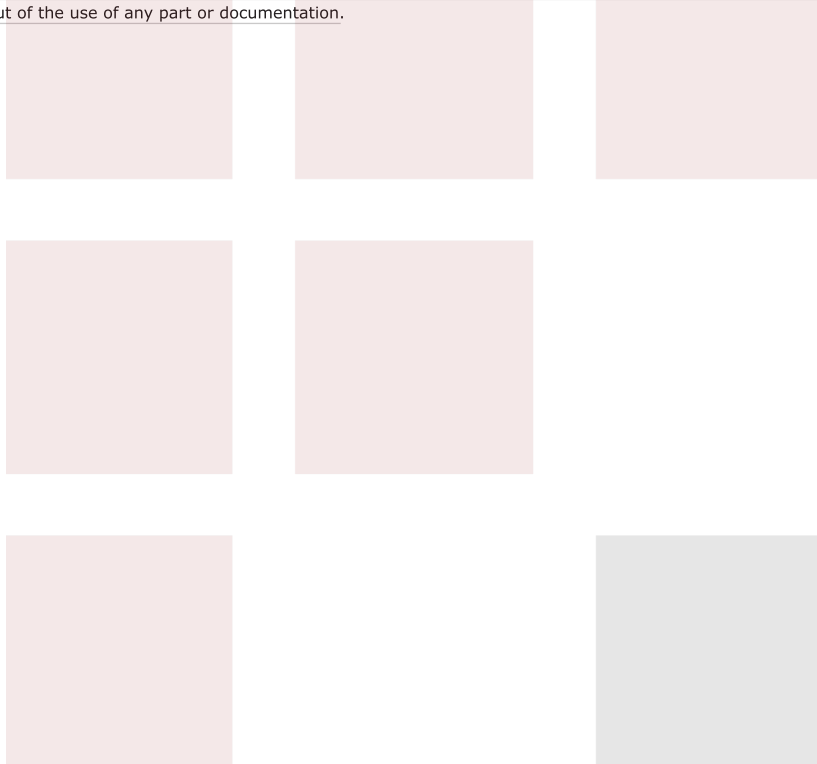
Fairview Microwave
 301 Leora Ln., Suite 100
 Lewisville, TX 75056
 Tel: 1-800-715-4396 / (972) 649-6678
 Fax: (972) 649-6689
www.fairviewmicrowave.com
sales@fairviewmicrowave.com

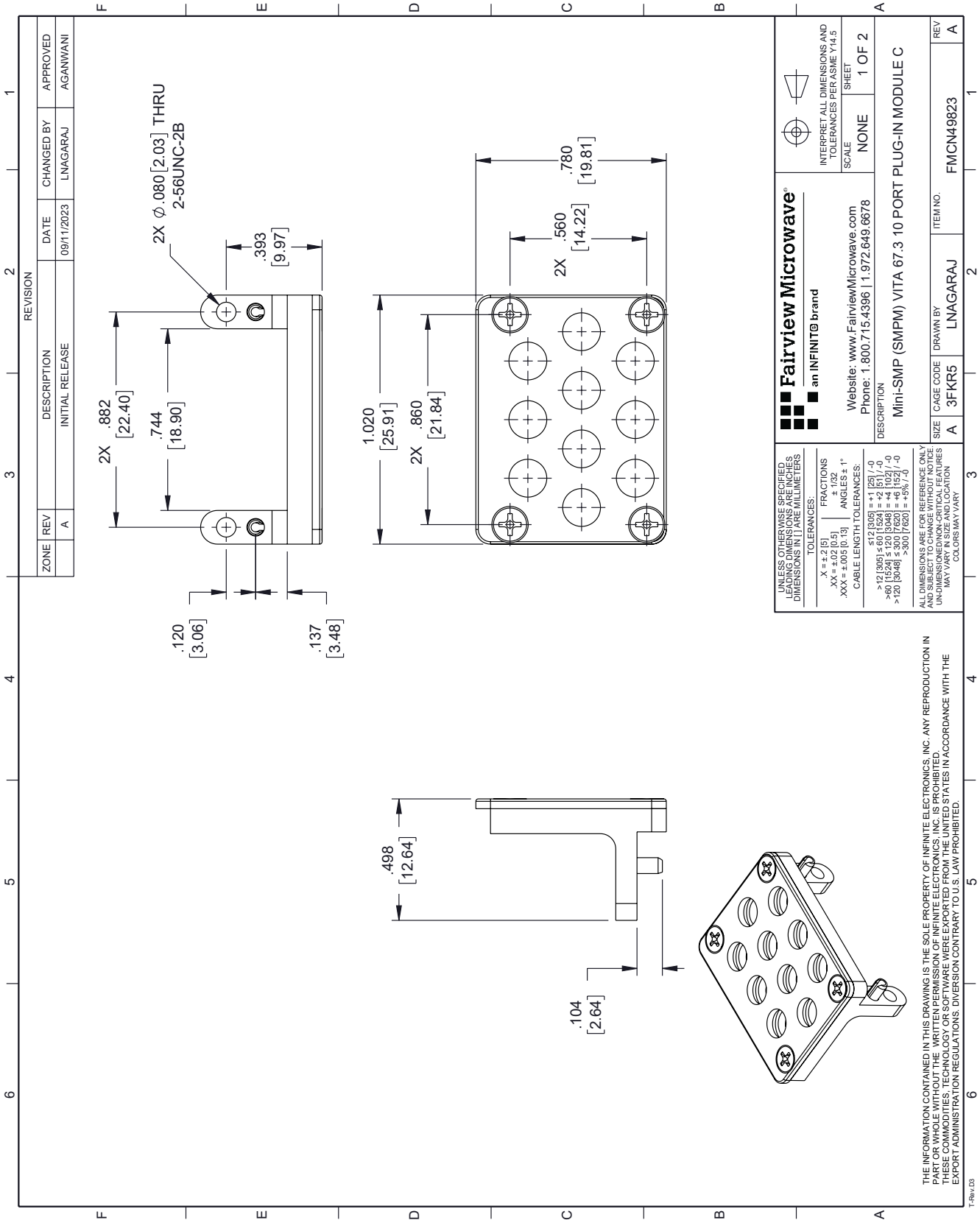
Mini SMP (SMPM) VITA 67.3 10 Port Plug-In Module C from Fairview Microwave is in-stock and available to ship same-day. All of our RF/microwave products are available off-the-shelf from our ISO 9001:2008 certified facilities in Lewisville, Texas. Fairview Microwave is RF on-demand.

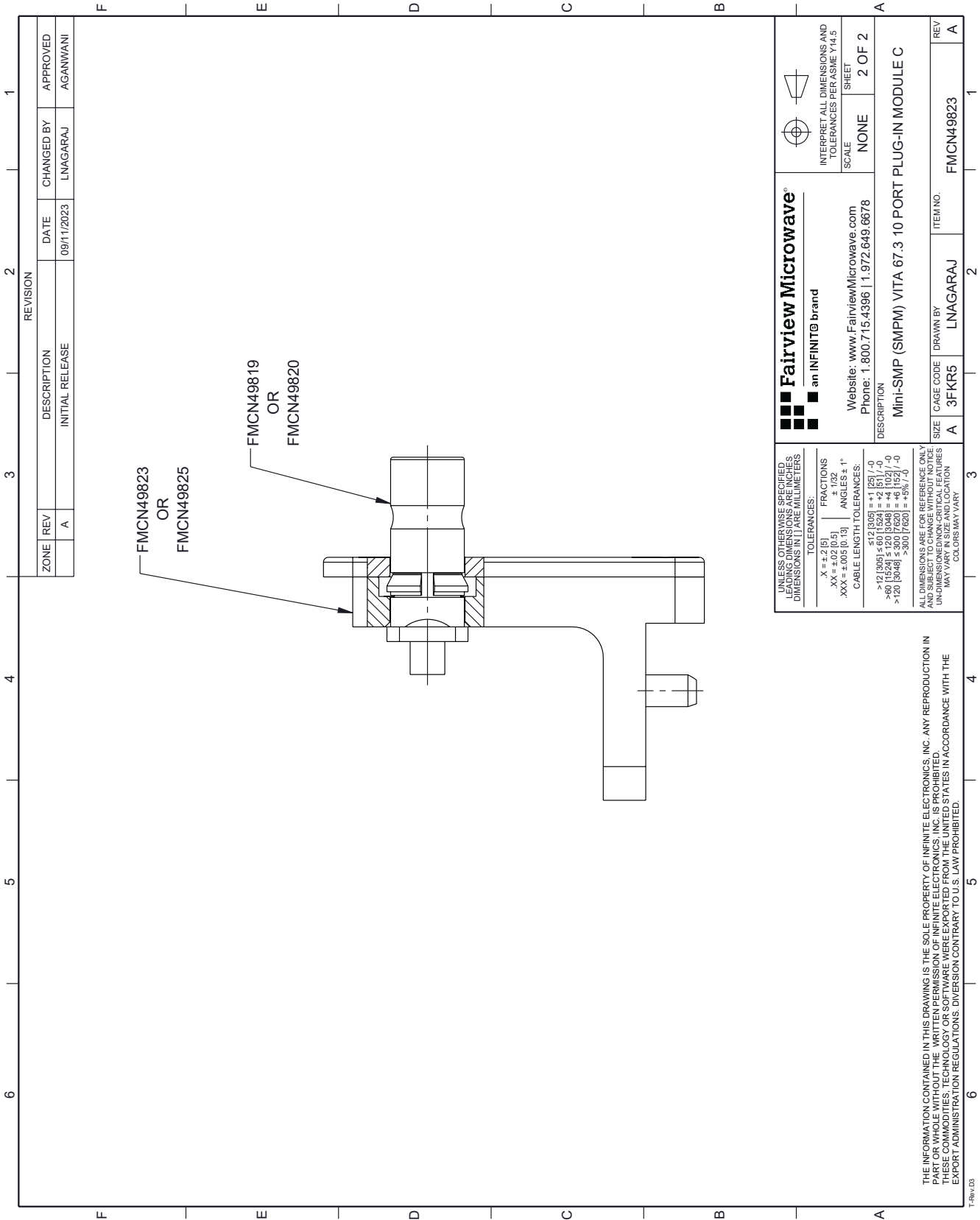
For additional information on this product, please click the following link: [Mini SMP \(SMPM\) VITA 67.3 10 Port Plug-In Module C FMCN49823](#)

URL: <https://www.fairviewmicrowave.com/mini-smp-connector-fmcn49823-p.aspx>

The information contained in this document is accurate to the best of our knowledge and representative of the part described herein. It may be necessary to make modifications to the part and/or the documentation of the part, in order to implement improvements. Fairview Microwave reserves the right to make such changes as required. Unless otherwise stated, all specifications are nominal. Fairview Microwave does not make any representation or warranty regarding the suitability of the part described herein for any particular purpose, and Fairview Microwave does not assume any liability arising out of the use of any part or documentation.







ZONE		REV	DESCRIPTION	DATE	CHANGED BY	APPROVED
		A	INITIAL RELEASE	09/11/2023	LNAGARAJ	AGANWANI

REVISION	
1	

<p>Fairview Microwave[®] an INFINIT[®] brand</p> <p>Website: www.FairviewMicrowave.com Phone: 1.800.715.4396 1.972.649.6678</p>	<p>INTERPRET ALL DIMENSIONS AND TOLERANCES PER ASME Y14.5</p>
	<p>SCALE: NONE</p> <p>SHEET: 2 OF 2</p>
<p>DESCRIPTION: Mini-SMP (SMPM) VITA 67.3 10 PORT PLUG-IN MODULE C</p>	
<p>SIZE: A</p> <p>CAGE CODE: 3FKR5</p> <p>DRAWN BY: LNAGARAJ</p>	<p>ITEM NO.: FMCN49823</p> <p>REV: A</p>

UNLESS OTHERWISE SPECIFIED, LEADING DIMENSIONS ARE IN INCHES DIMENSIONS IN [] ARE MILLIMETERS

TOLERANCES:

.X = ±.2 [5]	FRACTIONS ± 1/32
.XX = ±.02 [0.5]	ANGLES ± 1°
.XXX = ±.005 [0.13]	

CABLE LENGTH TOLERANCES:

>12 [305]	±.12 [3.05] = +1 [25] / -0
>6 [152]	±.06 [1.52] = +2 [51] / -0
>30 [762]	±.03 [762] = +6 [152] / -0
>300 [7620]	±.30 [7620] = +5% / -0

ALL DIMENSIONS ARE FOR REFERENCE ONLY AND SUBJECT TO CHANGE WITHOUT NOTICE. UN-DIMENSIONED CRITICAL FEATURES MAY VARY. COLORS MAY VARY.

THE INFORMATION CONTAINED IN THIS DRAWING IS THE SOLE PROPERTY OF INFINITE ELECTRONICS, INC. ANY REPRODUCTION IN WHOLE OR IN PART WITHOUT THE WRITTEN PERMISSION OF INFINITE ELECTRONICS, INC. IS PROHIBITED. THESE COMMODITY TECHNOLOGY OR SOFTWARE WERE EXPORTED FROM THE UNITED STATES IN ACCORDANCE WITH THE EXPORT ADMINISTRATION REGULATIONS. DIVERSION CONTRARY TO U.S. LAW PROHIBITED.