

## SMPS VITA 67.3 19 Port Backplane Module C

Fairview Microwave's FMCN49833 19-position block housing is part of our full line of VITA 67.3 Backplane solutions and is available for same-day shipping. These blocks are machined for a rugged solution. The blocks are designed to accept FMCN49829 (.047" cable contact) in flexible or semi-rigid cables. These blocks are ideal for blind mating daughtercards to motherboards as the RF contacts provide +/- .010" radial misalignment tolerance and have excellent return loss up to 40 GHz.

The SMPS blind mate connector is ideal for applications where direct visual or tactile access to the connection point is not possible, for example, when two circuit boards need to be mated.

Our SMPS block FMCN49833 specifications and drawing with dimensions are shown below in this PDF. Fairview Microwave's broad catalog of RF, microwave and millimeter wave connectors allows designers to configure and customize their signal connections however they like. Whether the need is to provide an I/O for a board design, or simply create a custom cable assembly configuration, Fairview Microwave has the right connector for the job. Fairview Microwave can also expertly build your custom cable assemblies for you and ship same-day.

### Mechanical Specifications

Size	
Length	0.96 in [24.38 mm]
Width/Dia.	1.12 in [28.45 mm]
Height	0.5 in [12.7 mm]
Weight	0.0849 lbs [38.51 g]
Mating Cycles	500 Cycles

### Material Specifications

Description	Material	Plating
Body	Aluminum	Chem Film

### Environmental Specifications

Temperature	
Operating Range	-65 to +165 deg C

**Compliance Certifications** (see [product page](#) for current document)

### Plotted and Other Data

Notes:



### Configuration:

- SMPS Connector
- 50 Ohms
- Straight Body Geometry
- VITA 67.3 Design

### Features:

- Rugged Aluminum construction
- Accepts 0.047" cable contact for end-to-end solution

### Applications:

- General Purpose Test
- VITA 67.3 Backplane
- High Density Applications
- Robust and rugged high speed cabled solution

Fairview Microwave  
 301 Leora Ln., Suite 100  
 Lewisville, TX 75056  
 Tel: 1-800-715-4396 / (972) 649-6678  
 Fax: (972) 649-6689  
[www.fairviewmicrowave.com](http://www.fairviewmicrowave.com)  
[sales@fairviewmicrowave.com](mailto:sales@fairviewmicrowave.com)

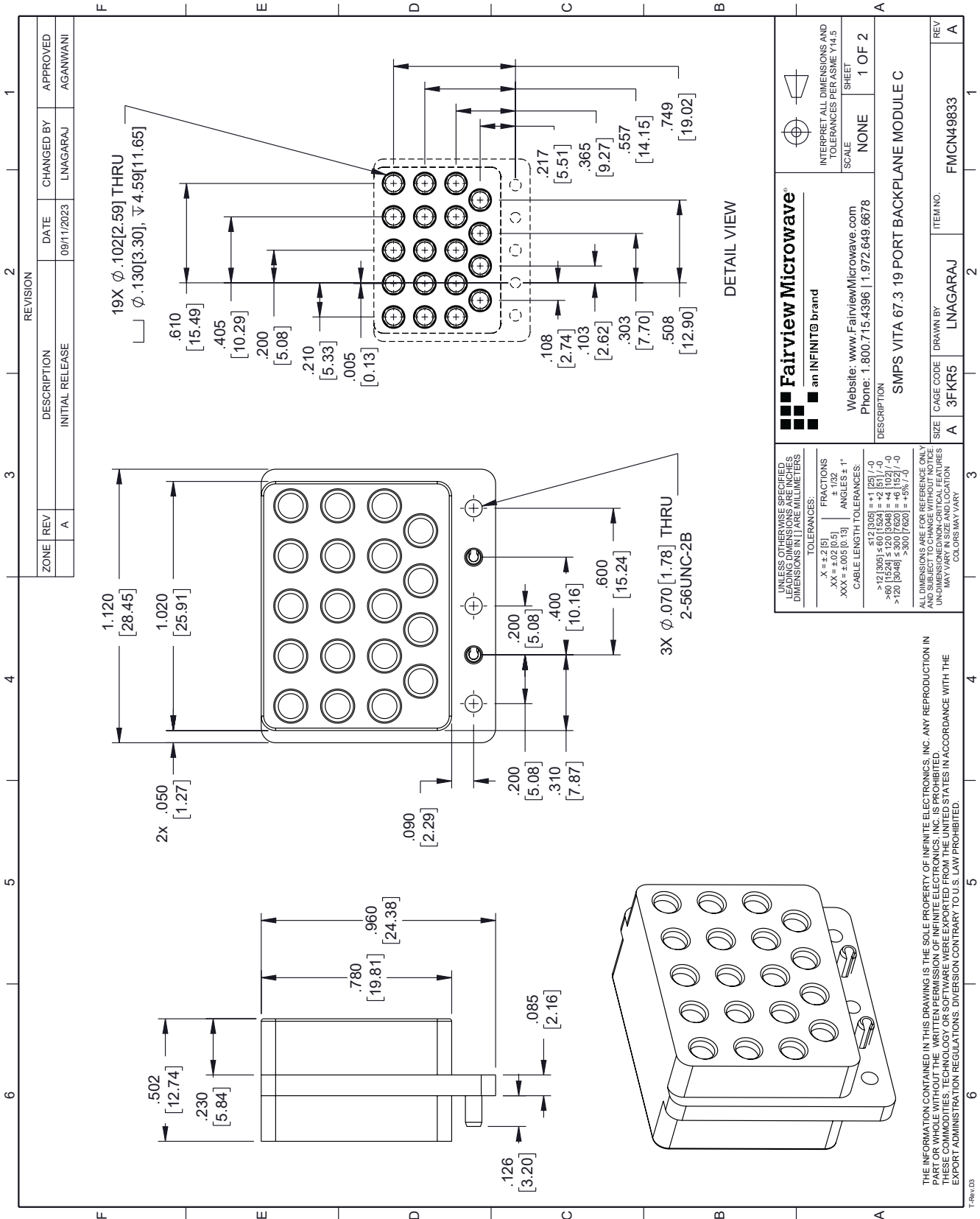
SMPS VITA 67.3 19 Port Backplane Module C from Fairview Microwave is in-stock and available to ship same-day. All of our RF/microwave products are available off-the-shelf from our ISO 9001:2008 certified facilities in Lewisville, Texas. Fairview Microwave is RF on-demand.

For additional information on this product, please click the following link: [SMPS VITA 67.3 19 Port Backplane Module C FMCN49833](#)

URL: <https://www.fairviewmicrowave.com/smps-connector-fmcn49833-p.aspx>

The information contained in this document is accurate to the best of our knowledge and representative of the part described herein. It may be necessary to make modifications to the part and/or the documentation of the part, in order to implement improvements. Fairview Microwave reserves the right to make such changes as required. Unless otherwise stated, all specifications are nominal. Fairview Microwave does not make any representation or warranty regarding the suitability of the part described herein for any particular purpose, and Fairview Microwave does not assume any liability arising out of the use of any part or documentation.





ZONE	REV	DESCRIPTION	DATE	CHANGED BY	APPROVED
A		INITIAL RELEASE	09/11/2023	LNAGARAJ	AGANWANI

<p><b>Fairview Microwave</b> an INFINIT<sup>®</sup> brand</p> <p>Website: <a href="http://www.FairviewMicrowave.com">www.FairviewMicrowave.com</a> Phone: 1.800.715.4396   1.972.649.6678</p>		<p>INTERPRET ALL DIMENSIONS AND TOLERANCES PER ASME Y14.5</p> <p>SCALE: NONE</p> <p>SHEET: 1 OF 2</p>
<p>UNLESS OTHERWISE SPECIFIED, LEADING DIMENSIONS ARE IN INCHES AND DIMENSIONS IN [ ] ARE MILLIMETERS</p> <p>TOLERANCES:</p> <p>X = ± 2 [6]</p> <p>XX = ± 0.02 [0.5]</p> <p>XXX = ± 0.005 [0.13]</p> <p>FRACTIONS: ± 1/32</p> <p>ANGLES ± 1°</p> <p>CABLE LENGTH TOLERANCES:</p> <p>512 [305] = ± 1 [25] / -0</p> <p>&gt;12 [305] ≤ 60 [1524] = ± 2 [51] / -0</p> <p>&gt;6 [152] ≤ 30 [762] = ± 1 [25] / -0</p> <p>&gt;120 [3048] ≤ 300 [7620] = ± 6 [152] / -0</p> <p>&gt;300 [7620] = ± 5% / -0</p>		<p>DESCRIPTION: SMPS VITA 67.3 19 PORT BACKPLANE MODULE C</p> <p>ITEM NO.: FMCN49833</p> <p>SIZE: A</p> <p>CAGE CODE: 3FKR5</p> <p>DRAWN BY: LNAGARAJ</p>

ALL DIMENSIONS ARE FOR REFERENCE ONLY AND SUBJECT TO CHANGE WITHOUT NOTICE. UNDIMENSIONED CRITICAL FEATURES MAY VARY. COLORS MAY VARY.

THE INFORMATION CONTAINED IN THIS DRAWING IS THE SOLE PROPERTY OF INFINITE ELECTRONICS, INC. ANY REPRODUCTION IN ANY FORM OR BY ANY MEANS WITHOUT THE WRITTEN PERMISSION OF INFINITE ELECTRONICS, INC. IS PROHIBITED. THESE COMMODITY TECHNOLOGY OR SOFTWARE WERE EXPORTED FROM THE UNITED STATES IN ACCORDANCE WITH THE EXPORT ADMINISTRATION REGULATIONS. DIVERSION CONTRARY TO U.S. LAW PROHIBITED.

