

## BMMA Male (Plug) PCB Connector Thru Hole Solder Attachment 0.200 inch X 0.067 inch Hole Spacing



### FMCN5139

#### Configuration

- BMMA Male Connector
- 50 Ohms
- Straight Body Geometry
- Connector Interface Types: Thru Hole

#### Features

- Operating Frequency of 18 GHz Max.
- Good VSWR of 1.55:1
- Gold Plated Beryllium Copper Contact

#### Applications

- General Purpose Test
- PCB Applications

#### Description

BMMA Male Standard Connector Solder Attachment for Thru hole Cable, part number FMCN5139, from Fairview Microwave is in-stock and ships same day. This BMMA male connector operates up to a maximum frequency of 18 GHz and offers good VSWR of 1.55:1.

Fairview's BMMA male connector FMCN5139 datasheet specifications and outline drawing are shown in this PDF below. Our extensive offering of RF, microwave and millimeter wave connectors allows designers to configure and customize their signal connections however they like. From providing an I/O for a board design to creating a custom cable assembly configuration, Fairview Microwave has a connector solution to meet your needs. Fairview Microwave also has the expertise to build your custom cable assemblies for you and ship them same-day.

#### Electrical Specifications

Description	Minimum	Typical	Maximum	Units
Frequency Range	DC		18	GHz
VSWR			1.55:1	
Insertion Loss			0.509	dB
Impedance		50		Ohms

#### Mechanical Specifications

##### Size

Length	0.498 in [12.65 mm]
Width	0.24 in [6.1 mm]
Height	0.24 in [6.1 mm]
Weight	0.003 lbs [1.36 g]
Mating Cycles	500 Cycles

#### Material Specifications

Description	Material	Plating
Contact	Beryllium Copper	Gold
Insulation	PTFE	
Outer Conductor	Beryllium Copper	Gold
Body	Brass	Gold

## BMMA Male (Plug) PCB Connector Thru Hole Solder Attachment 0.200 inch X 0.067 inch Hole Spacing



### FMCN5139

---

#### Environmental Specifications

**Temperature**

Operating Range

-65 to +165 deg C

**Compliance Certifications** (see [product page](#) for current document)

#### Plotted and Other Data

Notes:

BMMA Male (Plug) PCB Connector Thru Hole Solder Attachment 0.200 inch X 0.067 inch Hole Spacing from Fairview Microwave is in-stock and available to ship same-day. All of our RF/microwave products are available off-the-shelf from our ISO 9001:2008 certified facilities in Lewisville, Texas. Fairview Microwave is RF on-demand.

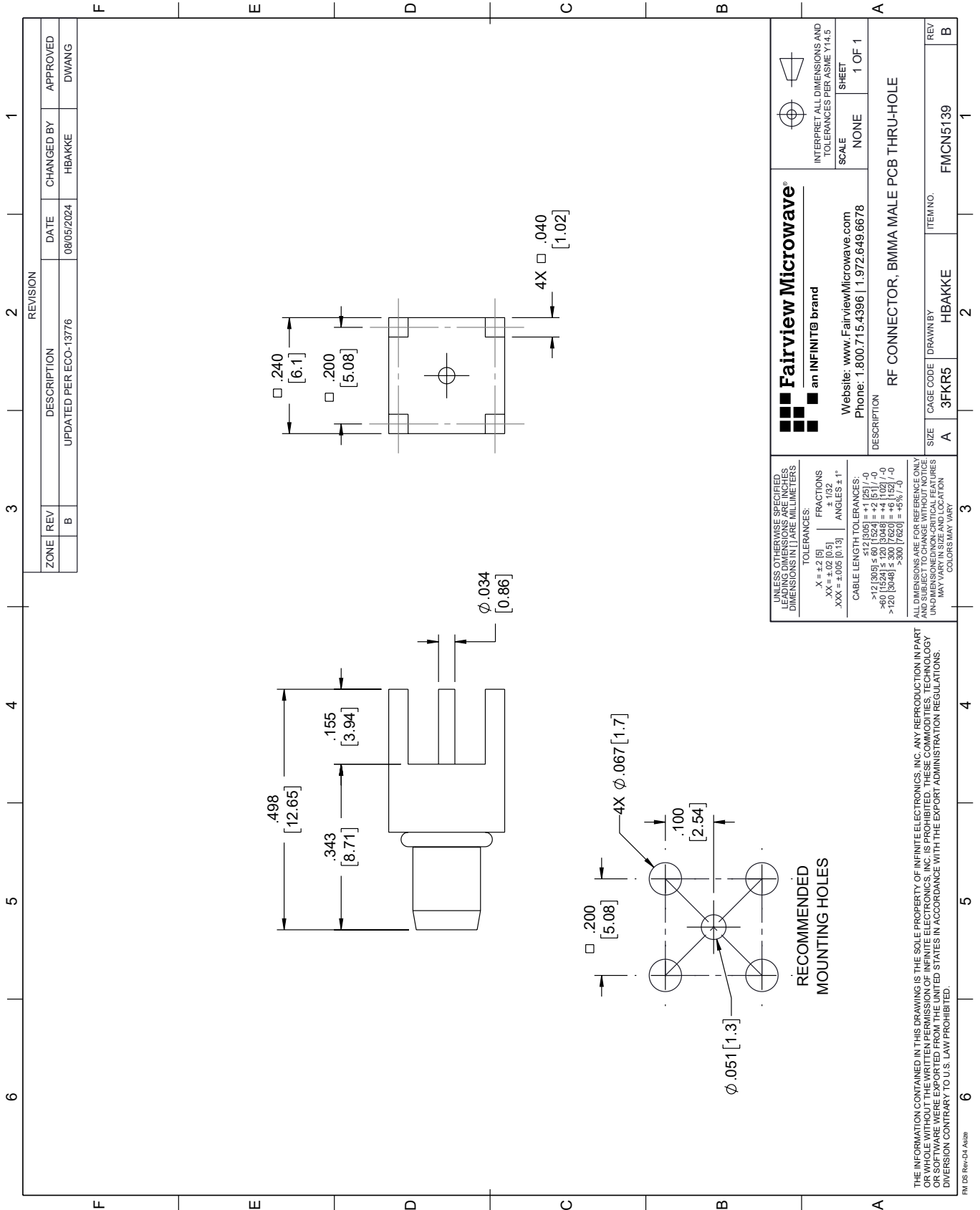
For additional information on this product, please click the following link: [BMMA Male \(Plug\) PCB Connector Thru Hole Solder Attachment 0.200 inch X 0.067 inch Hole Spacing FMCN5139](#)

URL: <https://www.fairviewmicrowave.com/bmma-male-pcb-connector-fmcn5139-p.aspx>

The information contained within this document is accurate to the best of our knowledge and representative of the part described herein. It may be necessary to make modifications to the part and/or the documentation of the part in order to implement improvements. Fairview Microwave reserves the right to make such changes as required. Unless otherwise stated, all specifications are nominal. Fairview Microwave does not make any representation or warranty regarding the suitability of the part described herein for any particular purpose, and Fairview Microwave does not assume liability arising out of the use of any part or document.

# FMCN5139 CAD Drawing

BMMA Male (Plug) PCB Connector Thru Hole Solder Attachment 0.200 inch X 0.067 inch Hole Spacing



REVISION		DATE	CHANGED BY	APPROVED
ZONE	REV	DESCRIPTION		
	B	UPDATED PER ECO-13776	HBAKKE	DWANG

 an INFINITB brand		Website: <a href="http://www.FairviewMicrowave.com">www.FairviewMicrowave.com</a> Phone: 1.800.715.4396   1.972.649.6678	INTERPRET ALL DIMENSIONS AND TOLERANCES PER ASME Y14.5 SCALE: NONE SHEET: 1 OF 1
DESCRIPTION: RF CONNECTOR, BMMA MALE PCB THRU-HOLE			
SIZE	CAGE CODE	DRAWN BY	ITEM NO.
A	3FKR5	HBAKKE	FMCN5139
REV			
B			

UNLESS OTHERWISE SPECIFIED, LEADING DIMENSIONS ARE IN INCHES. DIMENSIONS IN [ ] ARE MILLIMETERS.

TOLERANCES:

X = ±.2 [5]      FRACTIONS ± 1/32  
 .XX = ±.02 [0.5]      ANGLES ± 1°  
 .XXX = ±.005 [0.13]

CABLE LENGTH TOLERANCES:

<12 [305] ≤ 60 [1524] = +1 [25] / -0  
 >60 [1524] ≤ 120 [3048] = +4 [102] / -0  
 >120 [3048] ≤ 300 [7620] = +5% / -0

ALL DIMENSIONS ARE FOR REFERENCE ONLY. UNDIMENSIONED/NON-CRITICAL FEATURES MAY VARY IN SIZE AND LOCATION. COLORS MAY VARY.

THE INFORMATION CONTAINED IN THIS DRAWING IS THE SOLE PROPERTY OF INFINITE ELECTRONICS, INC. ANY REPRODUCTION IN PART OR WHOLE WITHOUT THE WRITTEN PERMISSION OF INFINITE ELECTRONICS, INC. IS PROHIBITED. THESE COMMODITIES, TECHNOLOGY OR SOFTWARE WERE EXPORTED FROM THE UNITED STATES IN ACCORDANCE WITH THE EXPORT ADMINISTRATION REGULATIONS. DIVISION CONTRARY TO U.S. LAW PROHIBITED.

FM DS Rev-D4 Alt2b